

# Thermia® CF31

## Enjoy the outdoors without sacrificing silence

### SERIES FEATURES

|                                       |                       |
|---------------------------------------|-----------------------|
| Thermal break                         | No                    |
| Main frame                            | 75 mm                 |
| Main leaf                             | 31 mm                 |
| General thickness of the profiles     | 1.5 mm                |
| Maximum glazing                       | 10 mm - 21 mm         |
| Maximum leaf weight                   | 160 Kg                |
| Track option                          | 2,3,4 or more tracks  |
| 90° frameless "KISS" closure solution | Yes                   |
| Available profiles                    | Window / Balcony Door |



#### ACOUSTICS

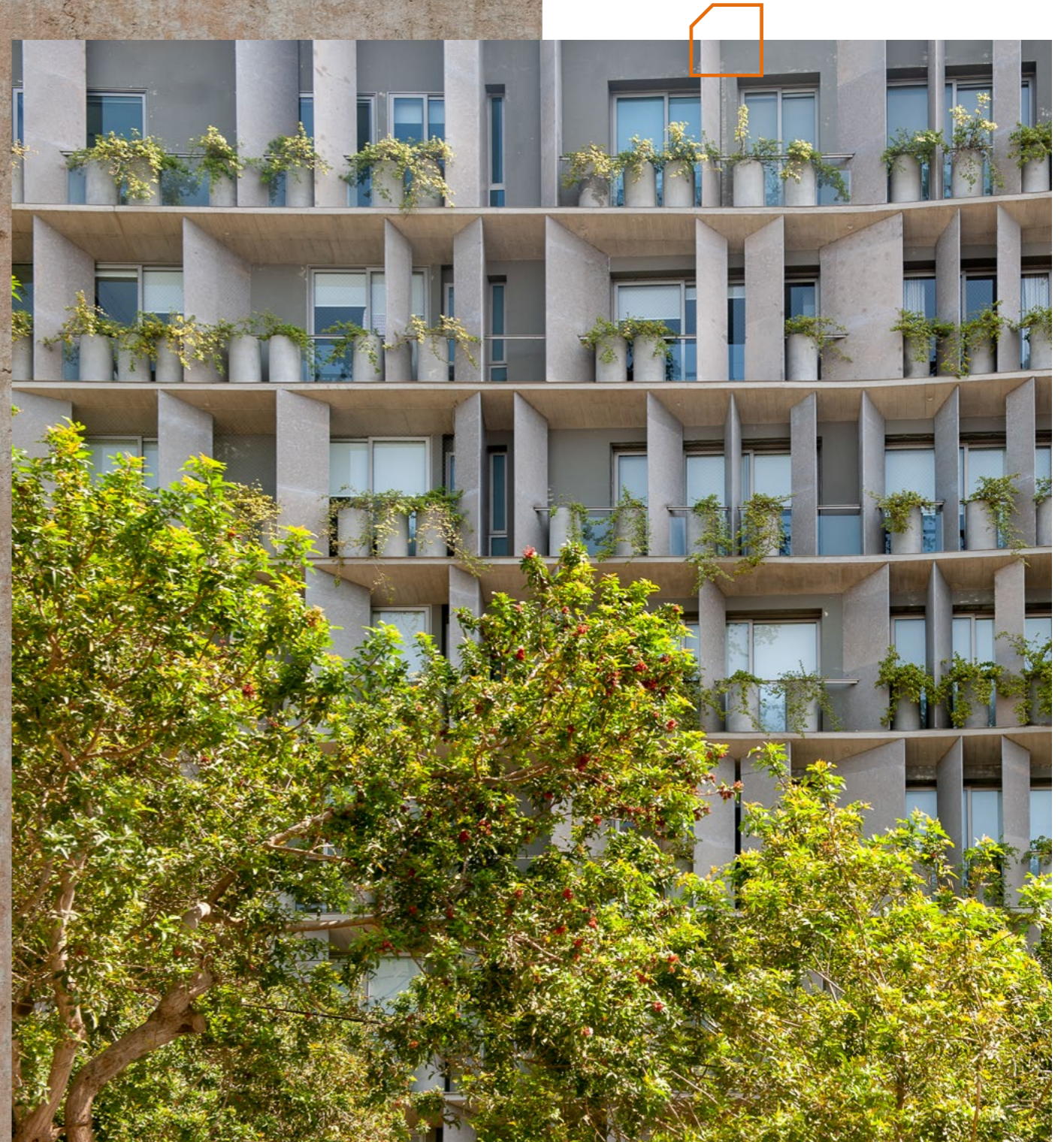
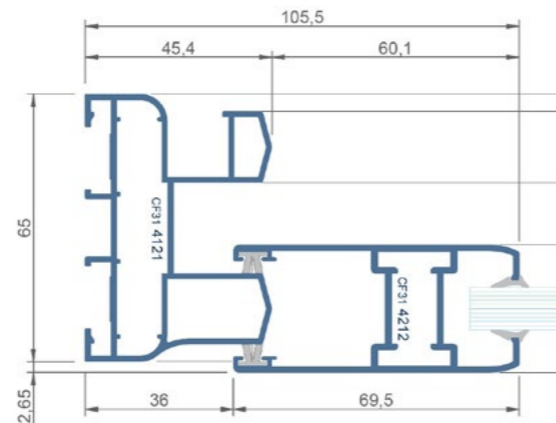
Estimated sound attenuation up to **Rw 36 dB**.  
Window size: 1.23 m x 1.45 m with acoustic laminated glass of 4.4/cam/4.4A

### TEST RESULTS

- Air permeability **3**
- Watertightness  
Window: **6A** Balcony door: **4A**
- Wind resistance  
Window: **C5** Balcony door: **B1**

Results of tests performed on ENSATEC® on the basis of Annex E of standard EN-14351-1:2006

### CROSS-SECTION



Quality seals



Qualanod seal for anodization  
License number: 1014



Qualicoat seal for lacquer  
License number: 405



Qualideco seal for the imitation wood  
License number: ES-0009F

Certification



THERMIA BARCELONA  
EN14351-1:2006+A2:2016