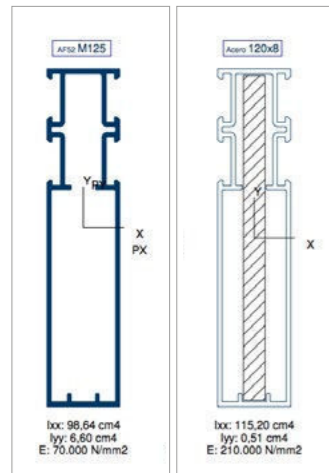


# Thermia® AF52 MULLION

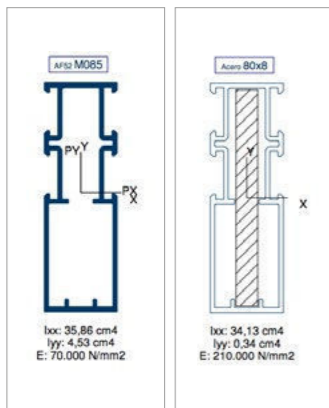
## Light structural series

The Thermia® Series AF52M is a light structural system made up of 85 mm and 125 mm mullion, conceived for projects with different reinforcement requirements.

### Inertias

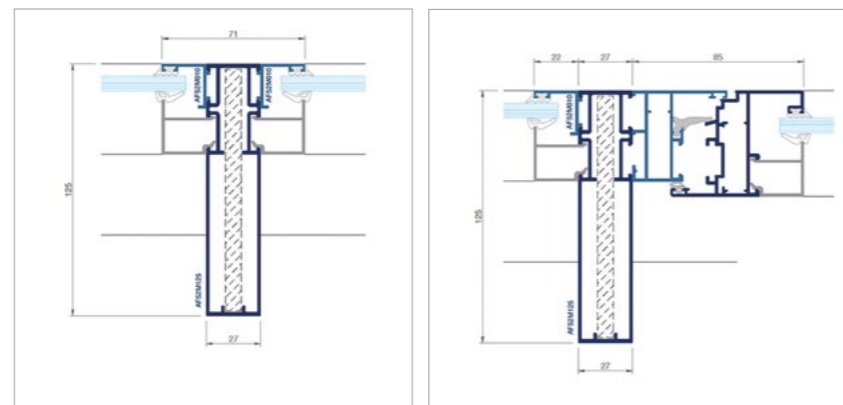


Non-reinforced Reinforced

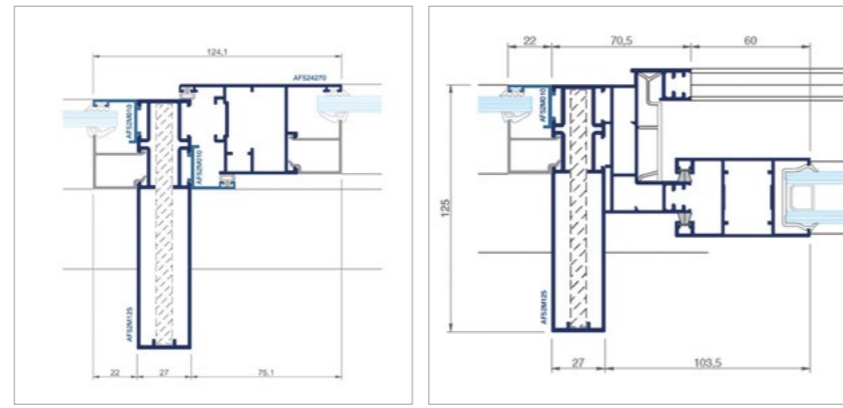


Non-reinforced Reinforced

### Cross-section



Cross-section fixed structure - fixed structure Cross-section fixed structure - inward opening



Cross-section fixed structure - outward opening Cross-section fixed structure - sliding opening



### Technical features Thermia® AF52M Mullion

- + Compatible with the Thermia® AF52 series, an upright and crossbeam system measuring 85 mm and 125 mm.
- + Glass panels supported mechanically by the glazing beads of the Thermia system.
- + Wide range of glazing.
- + Ability to mount outward-opening leaf from the AF52 series.
- + Ability to attach any sliding or casement window from the Thermia system to the uprights.
- + Option of internal steel reinforcement to increase strength (ExY module).
- + Many combinations can be achieved by attaching a screw-on blade or glazing bead in multiple positions.

Quality seals



Qualanod seal for anodization  
License number: 1014



Qualicoat seal for lacquer  
License number: 405



Qualideco seal for the imitation wood  
License number: ES-0009F

Certification



THERMIA BARCELONA  
EN14351-1:2006+A2:2016