

# Thermia® AF52 CE

## Safe ventilation and energy saving

SERIES FEATURES	
Thermal break	No
Main frame	45 mm
Main leaf	52 mm
General thickness of the profiles	1.5 mm
Maximum casement glazing	27 mm
Maximum casement leaf weight	90 Kg
Tilt and turn leaf maximum weight	130 Kg
Available profiles	Window / Door



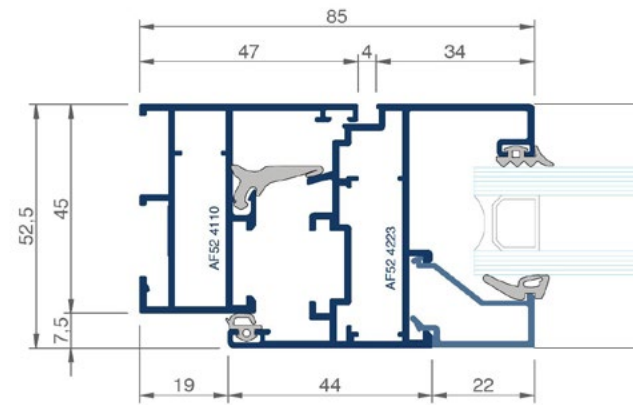
**ACOUSTICS**

Estimated sound attenuation up to **Rw 39 dB**.  
Window size: 1.23 m x 1.45 m with acoustic laminated glass of 4.4/cam/4.4A

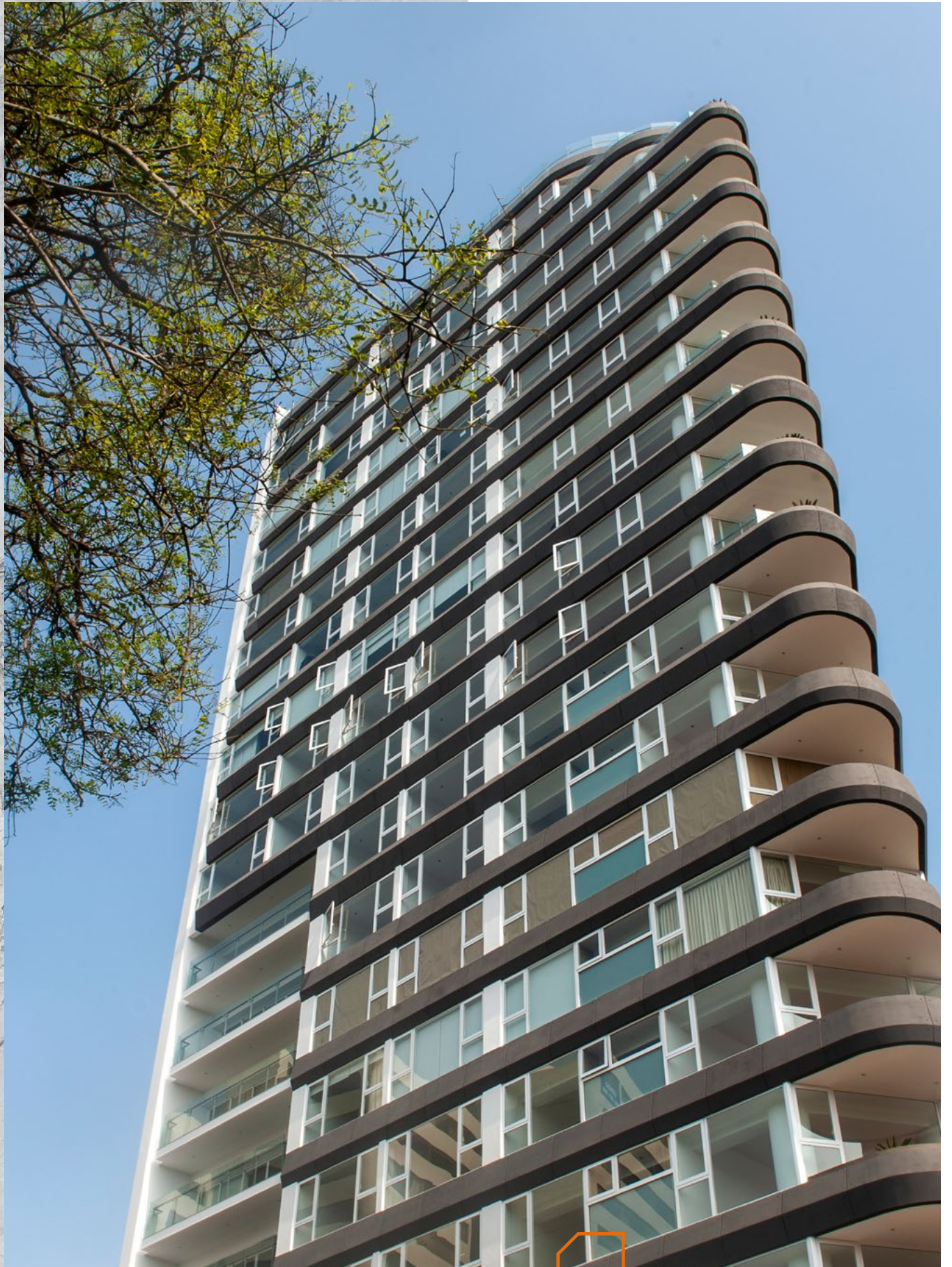
**TEST RESULTS**

-  Air permeability **4**
-  Watertightness **9A**
-  Wind resistance **C5**

**CROSS-SECTION**



Results of official tests performed on ENSATEC® 146488 and on the basis of Annex E of standard EN-14351-1:2006



CASEMENT / Thermia® AF52 CE

Quality seals



Qualanod seal for anodization  
License number: 1014



Qualicoat seal for lacquer  
License number: 405



Qualideco seal for the imitation wood  
License number: ES-0009F

Certification



THERMIA BARCELONA  
EN14351-1:2006+A2:2016

