

Thermia® PM40 SHUTTER

Mediterranean style

Fixed slat shutter

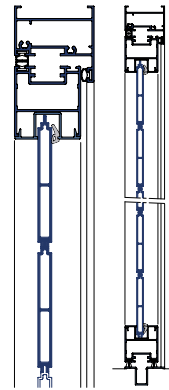
The solution for sun protection and ventilation, protecting the privacy of guests.



Closure with casement shutter and fixed slats.

Blind slat shutter

The solution for achieving a totally opaque and reinforced surface. Allows no light to enter.



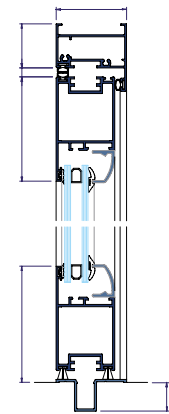
Closure with blind slats, ideal for shutting out light and visibility.

Movable slats shutter

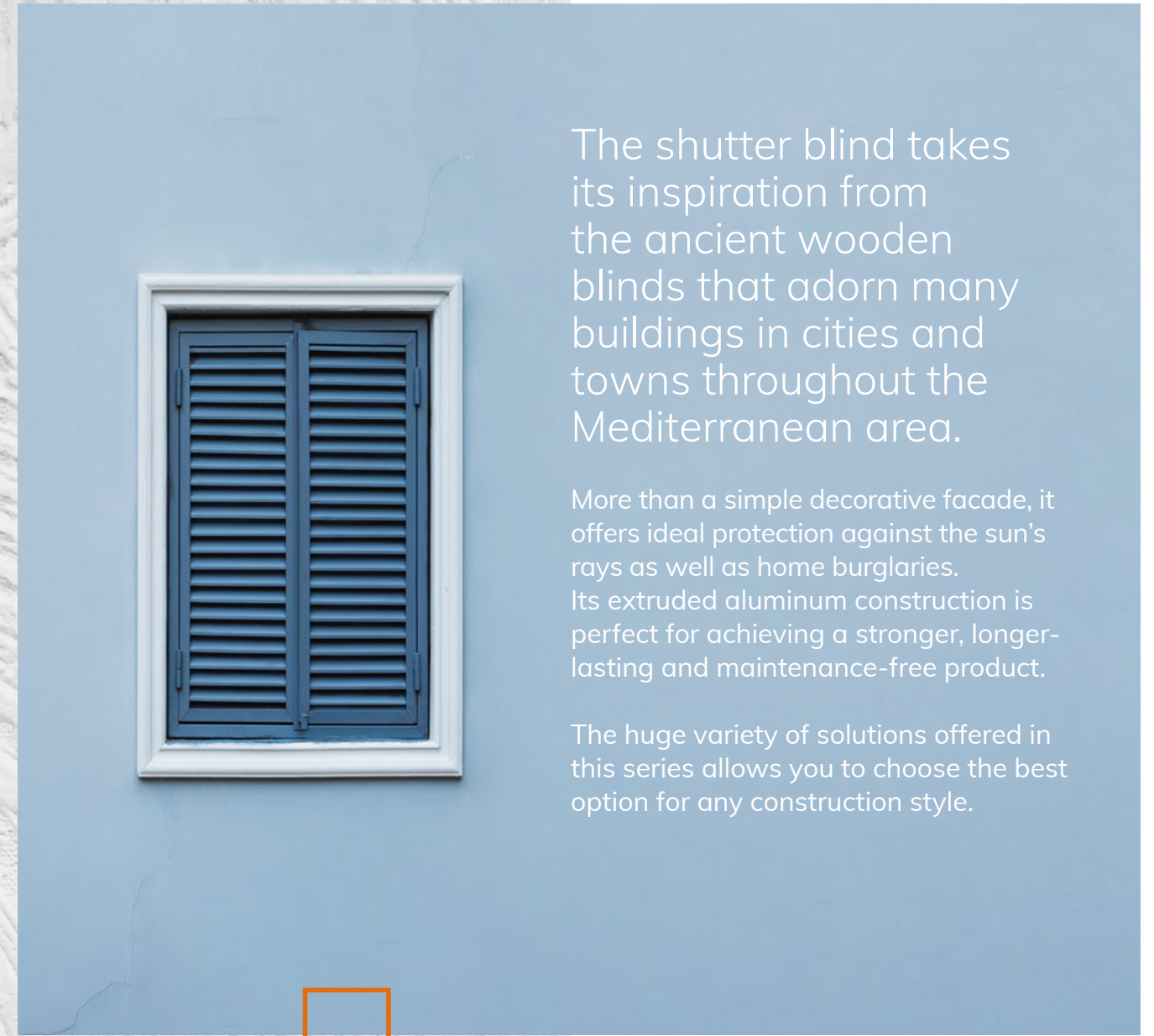
Slat position can be adjusted, allowing the user to position them as desired at any time.



Shutter folding closure with movable slats.



Shutter folding closure with 5 glass panels.



The shutter blind takes its inspiration from the ancient wooden blinds that adorn many buildings in cities and towns throughout the Mediterranean area.

More than a simple decorative facade, it offers ideal protection against the sun's rays as well as home burglaries. Its extruded aluminum construction is perfect for achieving a stronger, longer-lasting and maintenance-free product.

The huge variety of solutions offered in this series allows you to choose the best option for any construction style.



Shutters, sun protection & security



Windows for a better life

Diseño
Confort
Silencio

Thermia SHUTTER®

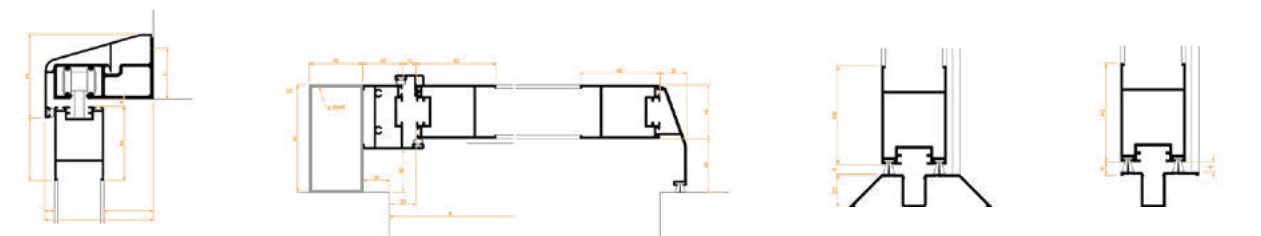
OPENING SYSTEMS

1 Sliding shutter system

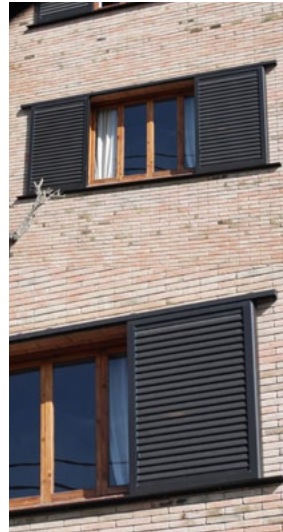
- + The sliding shutter blind is the perfect solution for sun protection on the facade of a building.
- + Its lateral movement allows for the fabrication of 1, 2, or more panels, with multiple tracks.
- + The wall guide is manufactured with a decorative cover for a more elegant look.
- + The ability to slide all the panels laterally means that the window opening can be left completely unobstructed.



Single Panel Double Panel



Wall guide with decorative cover Cross-section 1 panel Overlapping lower guide Recessed lower guide



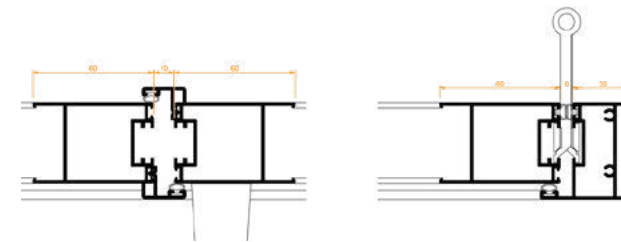
Windows for a better life

3 Casement shutter system

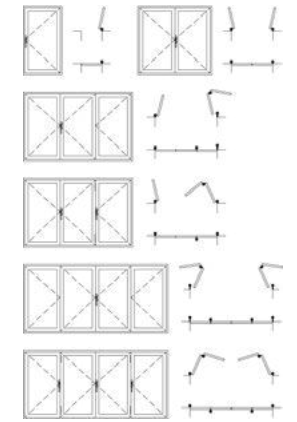
- + The leaf rotates to an open position on a vertical axis, using hinges.
- + Allows for up to 4 leaves to be installed, with different opening solutions.
- + Combinations (Fig. 2)
- + The panels can open to the outside or the inside, as needed.



Cross-section 1 leaf



Cross-section double leaf

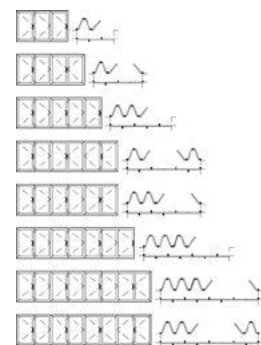


(fig. 2)

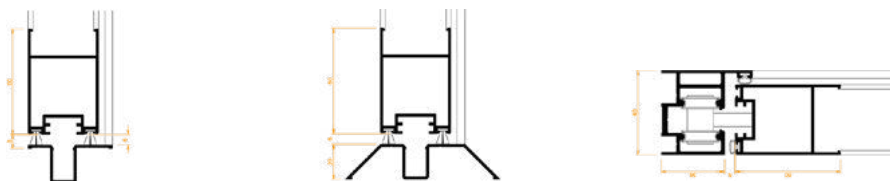


2 Folding shutter system

- + The ideal closure for restaurants, bars, pool areas, meeting rooms, etc.
- + Either glass or slats can be mounted in its frames.
- + Multiple combinations (Fig. 1)



(fig.1)



Recessed lower guide Overlapping lower guide Upper ceiling guide



The aluminum **shutter blind** series is ideal for:

- Decoration of the facade.
- Greater protection against robbery.
- Solar protection in buildings and residences.