

Thermia® GR48 GLASS RAIL

Minimalist security



- Extrusion alloy**
- 6060.
- State of supply**
- T6 - T66.
- Dimensions**
- Profile depth 48 mm.
- Section view 115 mm.
- Construction options**
- On the floor.
- On the edge of the floor.
- Recessed.
- Glazing**
- 6+6 T (Butyral)
- 8+8 T (Butyral)
- 10+10 T (Butyral)

- Principal characteristics**
- CTE - DB SE-AE approval for all usage categories*.
- Double anti-lift system for glazing.
 - Protective seating for glass, with impact resistance and high load-bearing capacity.
 - Mechanical adjustment for leveling on the floor.
 - Compatible with alignment strings and connecting angles.
 - Integrated water drainage, caps and external anodic protection.



Quality seals



Qualanod seal for anodization
License number: 1014



Qualicoat seal for lacquer
License number: 405

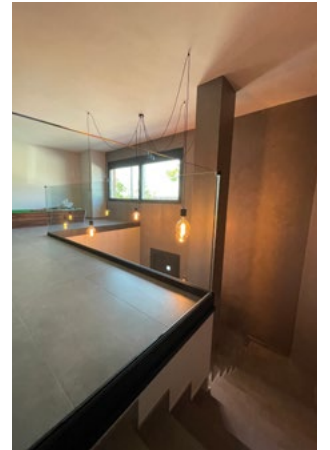


Qualideco seal for imitation wood
License number: ES-0009F

Certification



THERMIA BARCELONA
EN14351-1:2006+A2:2016

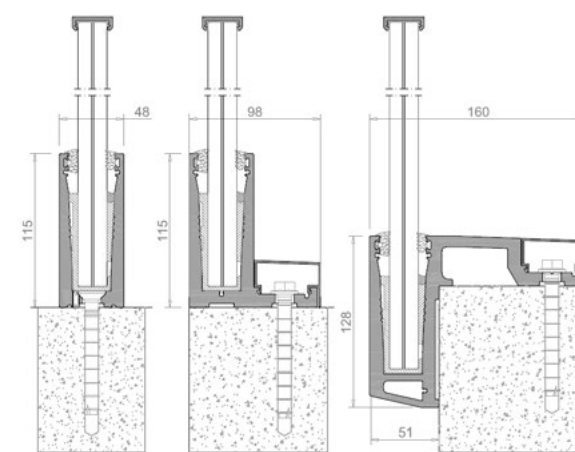


Tests

Usage categories

A1	A2	B	C1	C2
C3	C4	C5	E	F

Security testing:
CTE - DB SE-AE section 3.2.
Actions on handrails and dividing elements.



Performance

Usage categories certified for compliance with standards CTE-DB SE-AE

	6+6 // (T)	8+8 // (T)	10+10 // (T)
	✓ A,C1y2,D,G (Doc. 24381E) (1150mm altura)	✓ C3y4,E,F (Doc. 24381E) (1255mm altura)	✓ C5 (Doc. 24039E) (1150mm altura)
	✓ A,C1y2,D,G (Doc. 24381E) (1150mm altura)	✓ C3y4,E,F (Doc. 24381E) (1150mm altura)	✓ C3y4,E,F (Doc. 24381E) (1150mm altura)
	✓ A,C1y2,D,G (Doc. 24381E) (1150mm altura)	✓ C3y4,E,F (Doc. 24381E) (1255mm altura)	✓ C5 (Doc. 24039E) (1150mm altura)
	✓ A,C1y2,D,G (Doc. 24381E) (1150mm altura)	✓ A,C1y2,D,G (Doc. 24381E) (1255mm altura)	✓ C3y4,E,F (Doc. 24381E) (1255mm altura)
	✓ A,C1y2,D,G (Doc. 24381E) (1150mm altura)	✓ C3y4,E,F (Doc. 24381E) (1150mm altura)	✓ C3y4,E,F (Doc. 24381E) (1150mm altura)

NOTE 1:
Usage category C5 covers cases C3, C4, E and F.

NOTE 2:
Usage category C3 and 4, E, F covers cases A, C1, C2, D and G.