

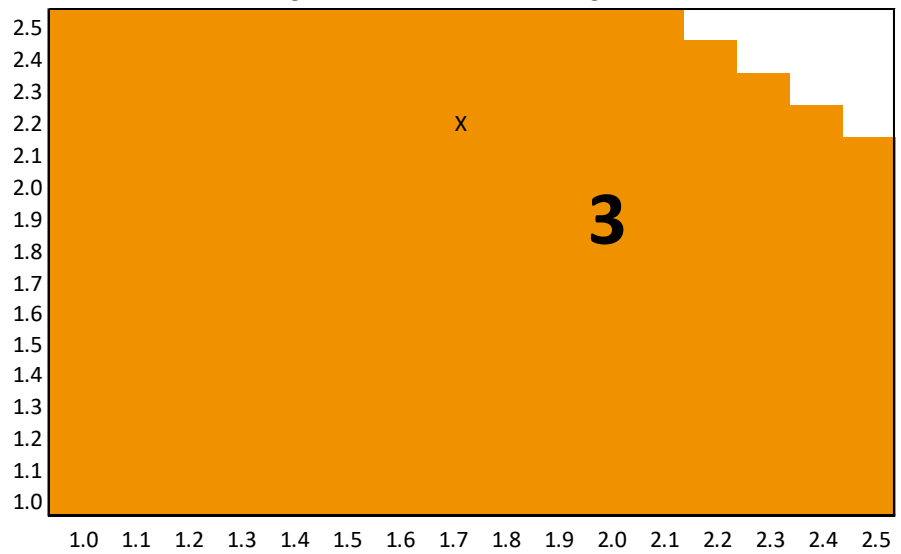
THERMIA® CF26

Serie para ventanas correderas

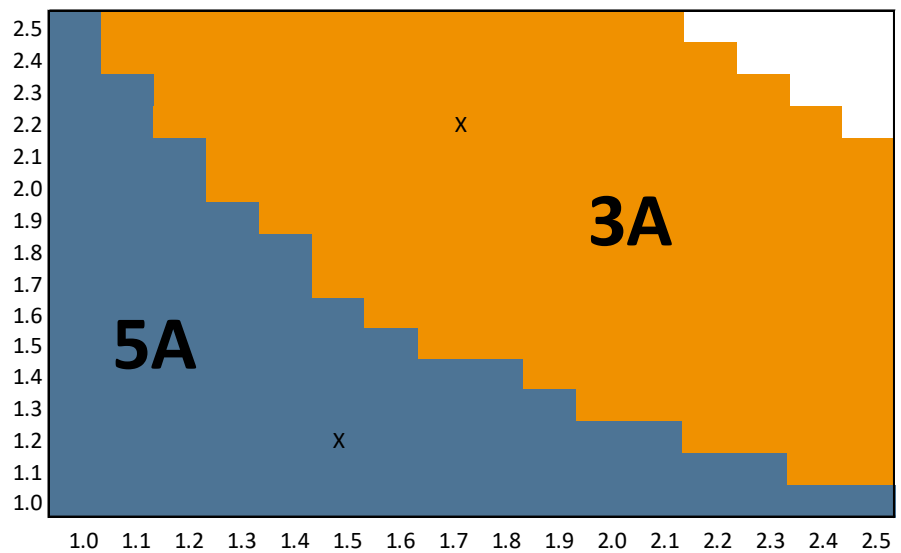


Ventanas para vivir mejor

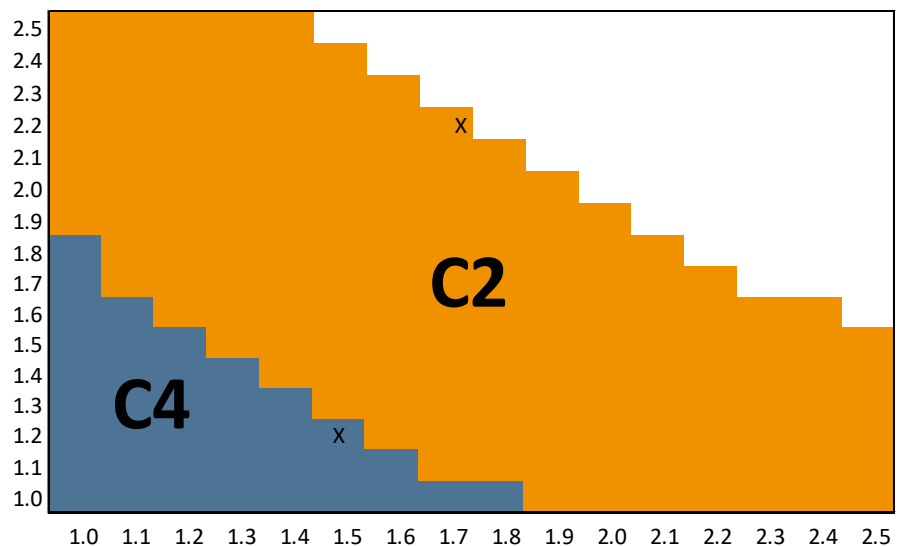
PERMEABILIDAD AL AIRE según EN 12207 - Marcado CE según EN 14351-1:2006+A2:2016



ESTANQUIDAD AL AGUA según EN 12208 - Marcado CE según EN 14351-1:2006+A2:2016

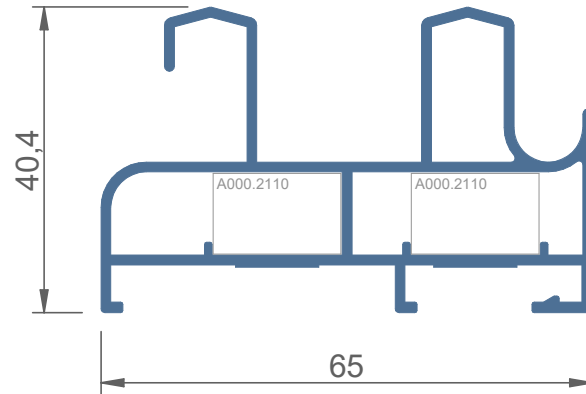


RESISTENCIA AL VIENTO según EN 12210 - Marcado CE según EN 14351-1:2006+A2:2016

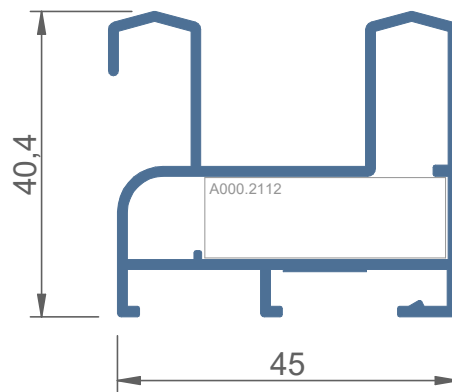


Resultados obtenidos de los informes según Ensatec con número de ensayo 146482, y en base al Anexo E de la norma EN 14351-1:2006+A2:2016.

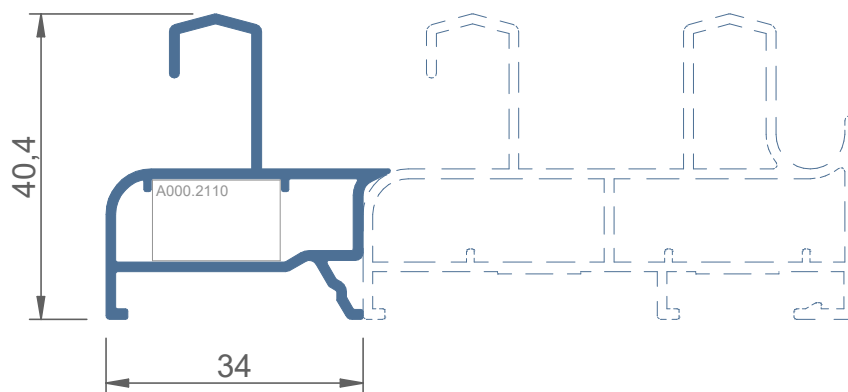
Diseño
Confort
Silencio



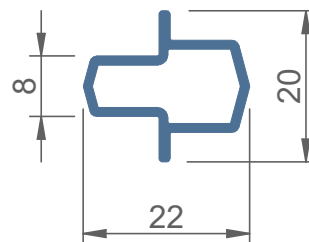
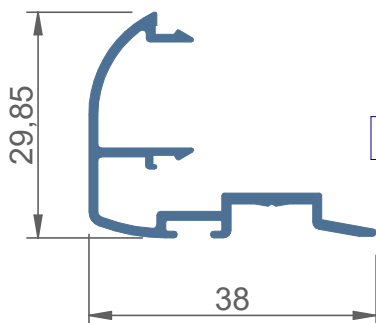
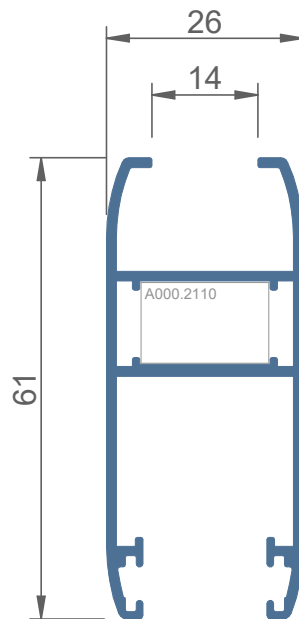
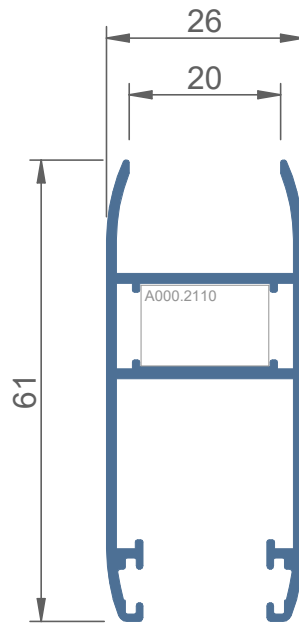
CF26 4111

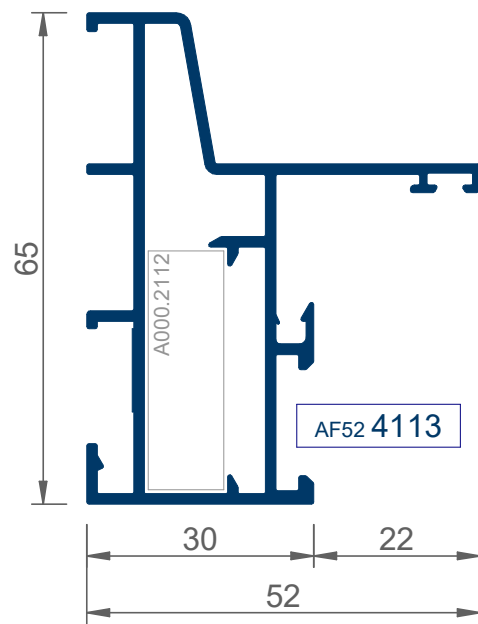
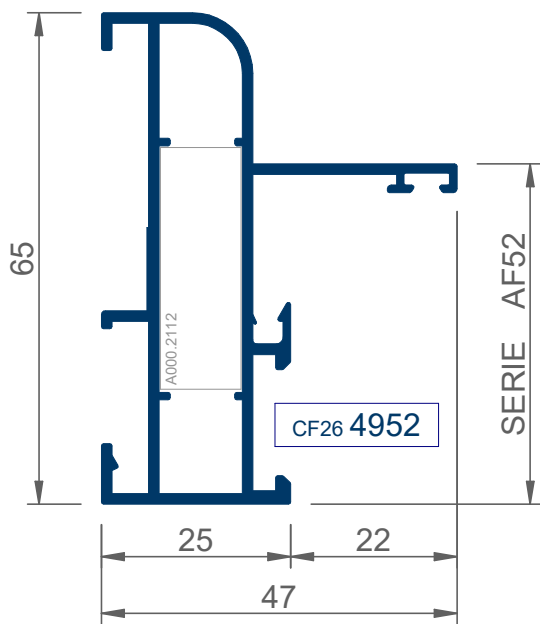
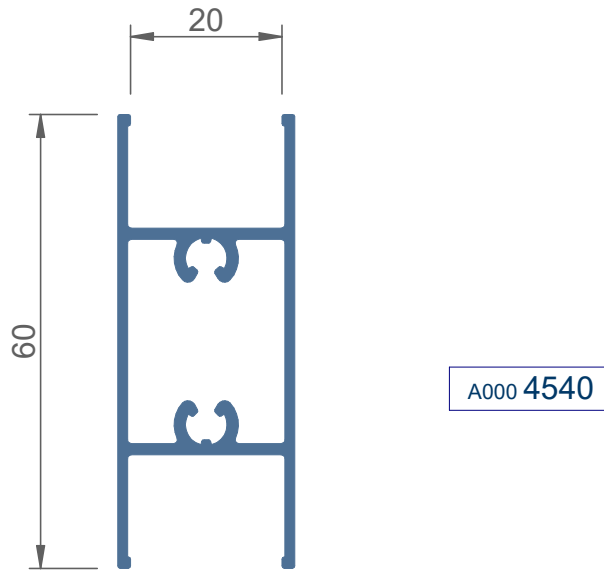


CF26 4120

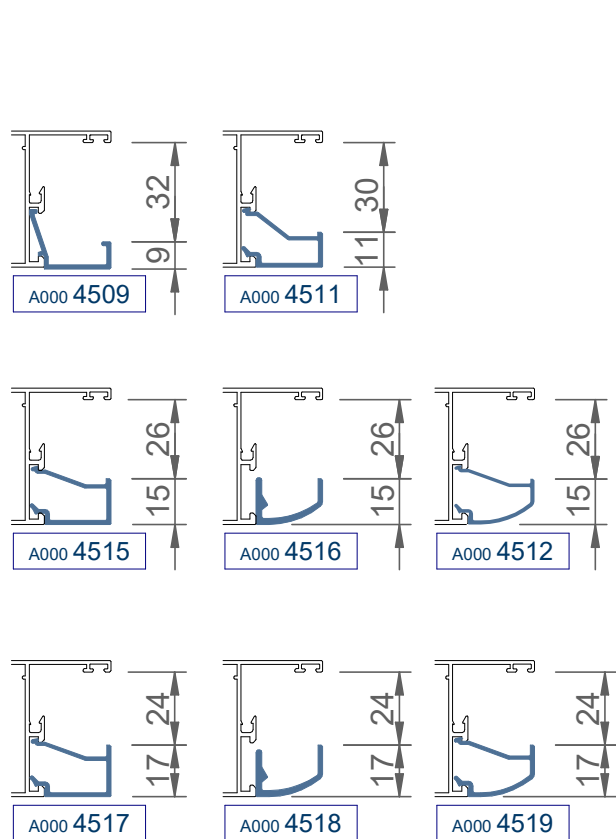


CF26 4130



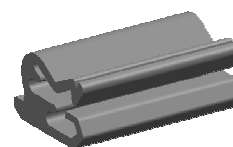
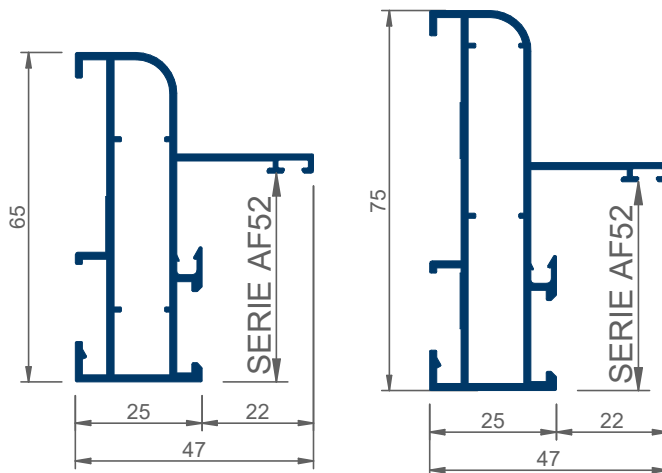


Diseño
Confort
Silencio



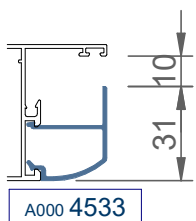
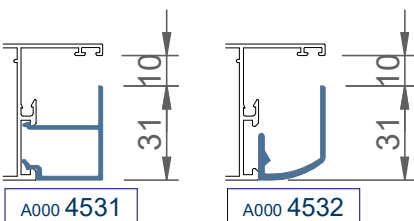
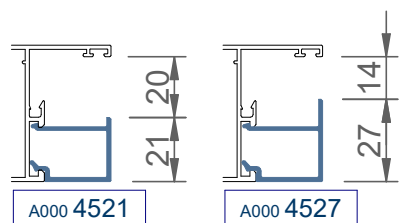
CF26 4952

CF31 4952



grapa junquillos elípticos

A000 2102

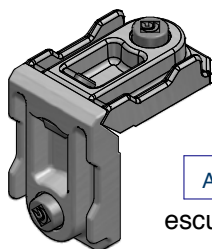


-  A000 2315 junta exterior (1mm)
-  A000 2351 junta exterior (2mm)
-  A000 2352 junta exterior (6mm)
-  GC 1109 junta cuña (de 1,5mm)
-  GC 11012 junta cuña (de 2mm)
-  GC 11014 junta cuña (de 2,5mm)
-  A000 2353 junta cuña (de 3 a 5mm)
-  A000 2355 junta cuña (de 5 a 7mm)
-  A000 2357 junta cuña (de 7 a 9mm)

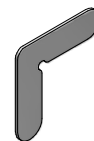
Diseño
Confort
Silencio



A000 2110
escuadra 17,2x11



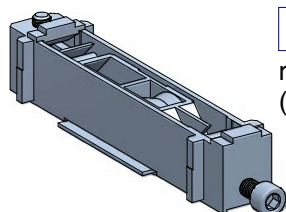
A000 2112
escuadra 32,6x11



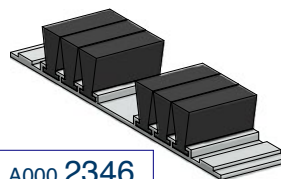
A000 2144
escuadra alineación
alas hojas



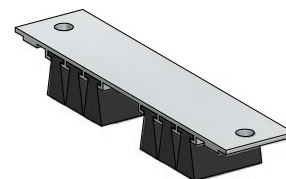
A000 2375
cepillo estanquidad
7x5 con lámina
central



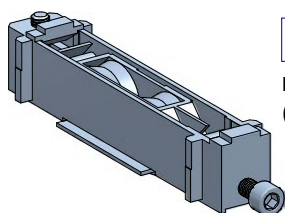
CF26 3762
rueda simple regulable
(bolas) 40 kg/hoja



A000 2346
cortavientos inferior
adhesivo



A000 2347
cortavientos superior
desmontable



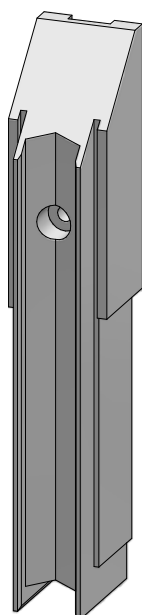
CF26 3764
rueda téndem regulable
(agujas) 160 kg/hoja



A000 2300
tapón deflector
con lámina

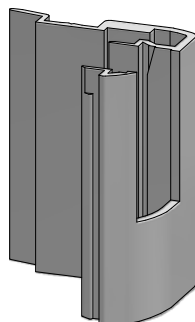


A000 2302
tapón railes
correderas

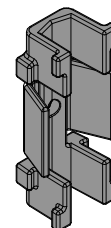


x 2

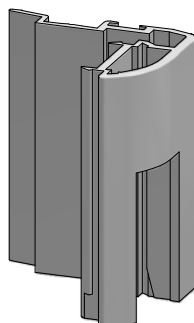
CF26 2311
kit topes y
escuadras
alineación
una hoja



CF26 2310
kit tapas
centrales una
hoja

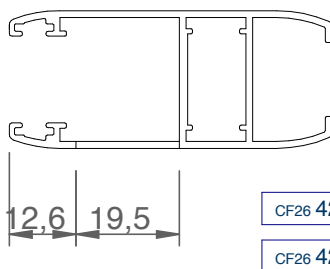
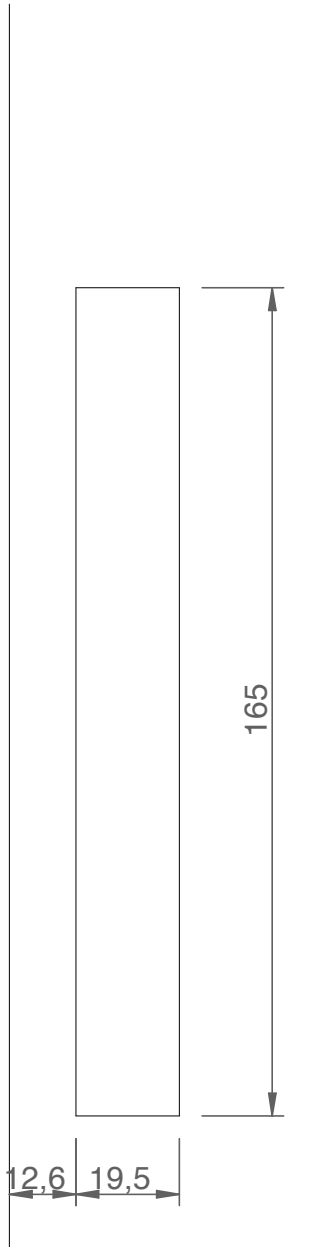


CF26 2351
base perfil
CF22.4250

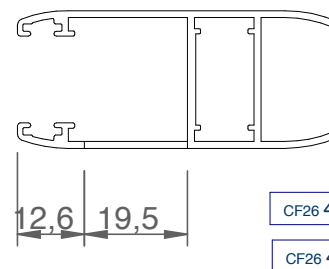
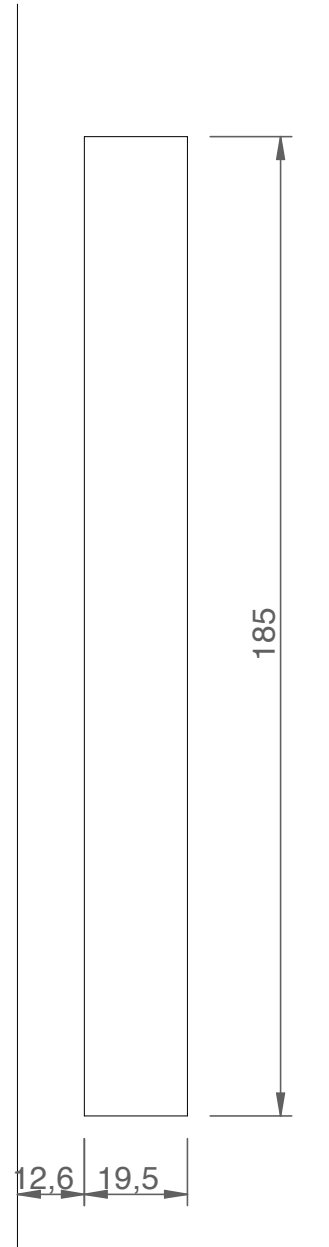


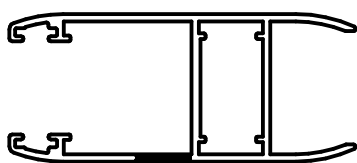
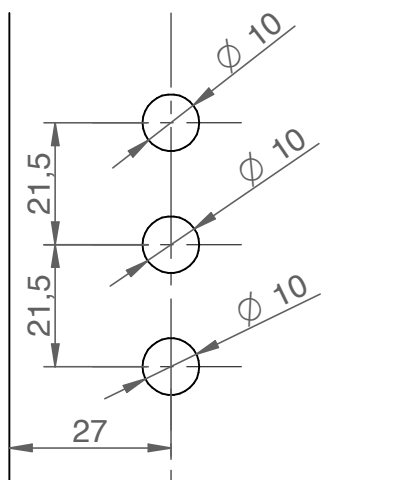
CF26 2350
tapa terminal
perfil CF22.4250

mecanizado cierre
A0003732

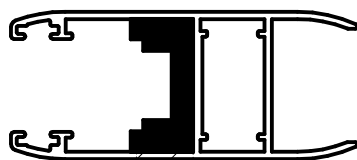


mecanizado cierre
A0003734





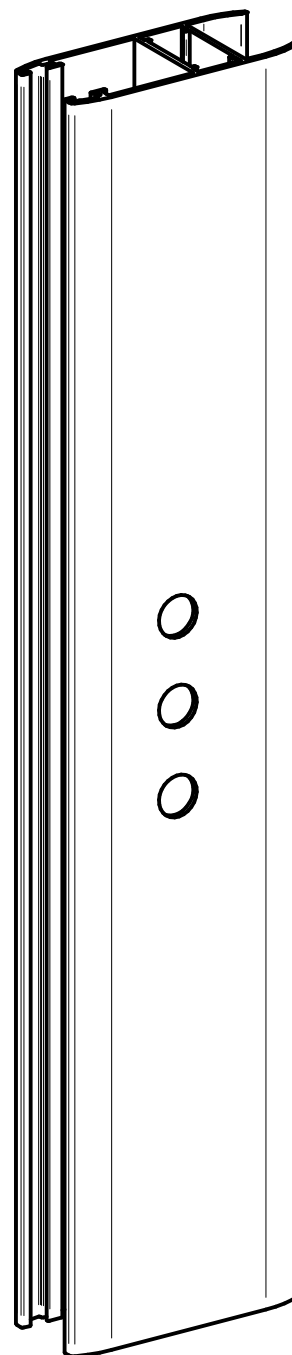
A000 3743



Calces de apoyo para el herraje



A000 3743



ENTRADA 7,5mm

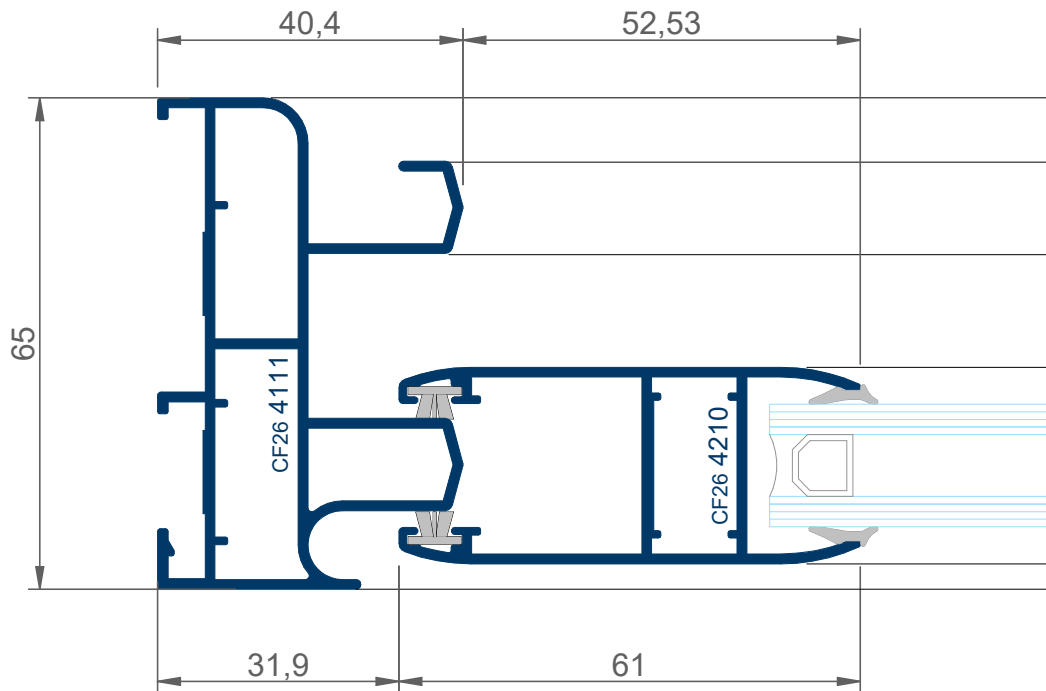
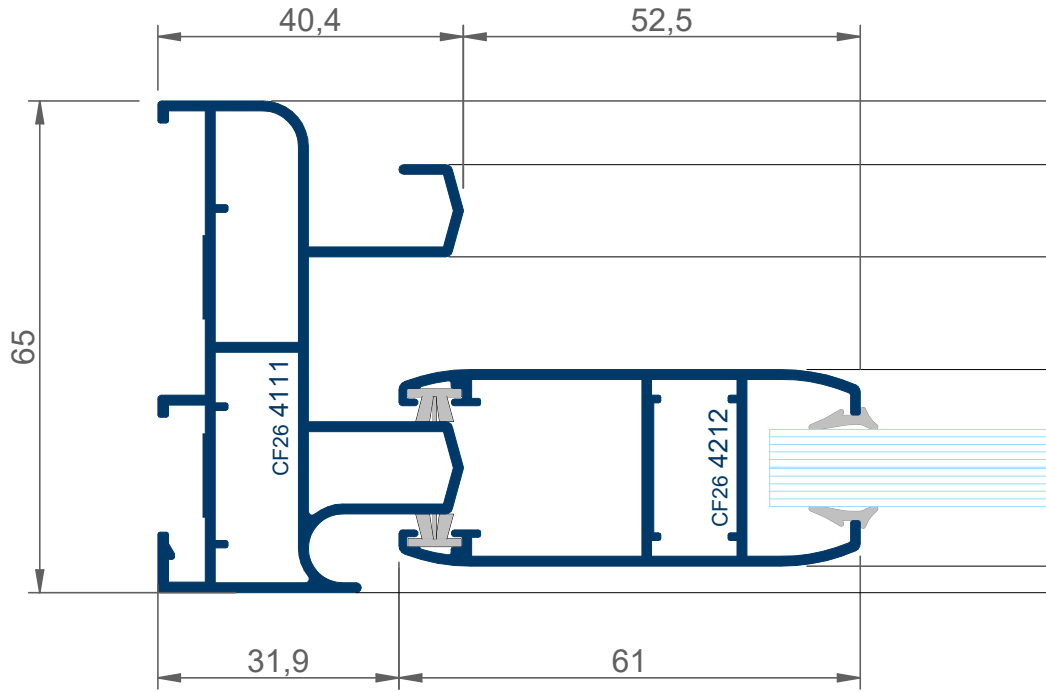
- A000 3745 mult (1 pto) long 245
- A000 37461 mult (2 pto) long 600
- A000 37471 mult (2 pto) long 1000
- A000 3748 mult (3 pto) long 1600
- A000 37481 mult (3 pto) long 1800

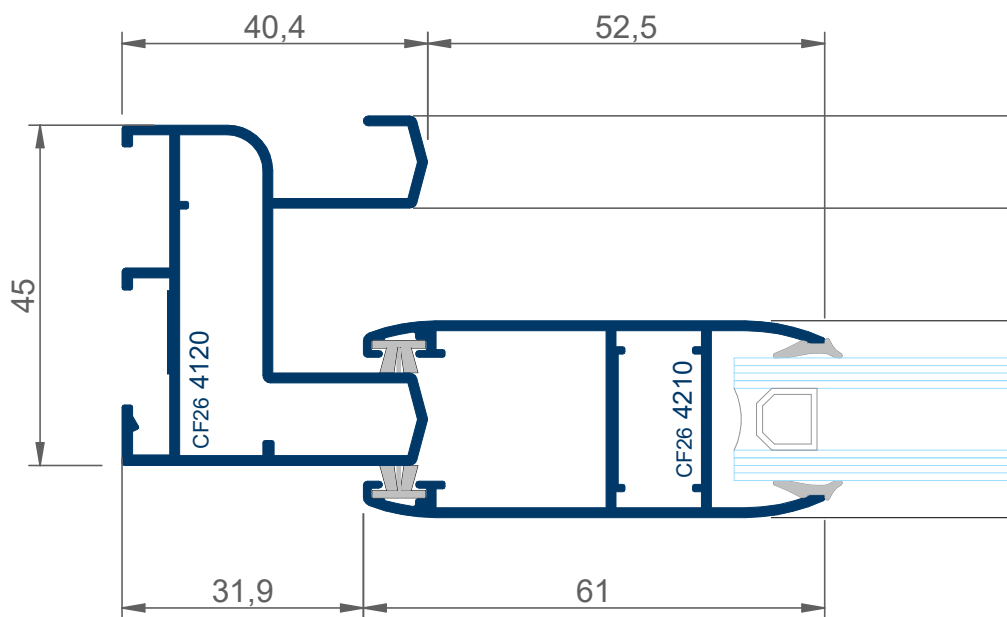
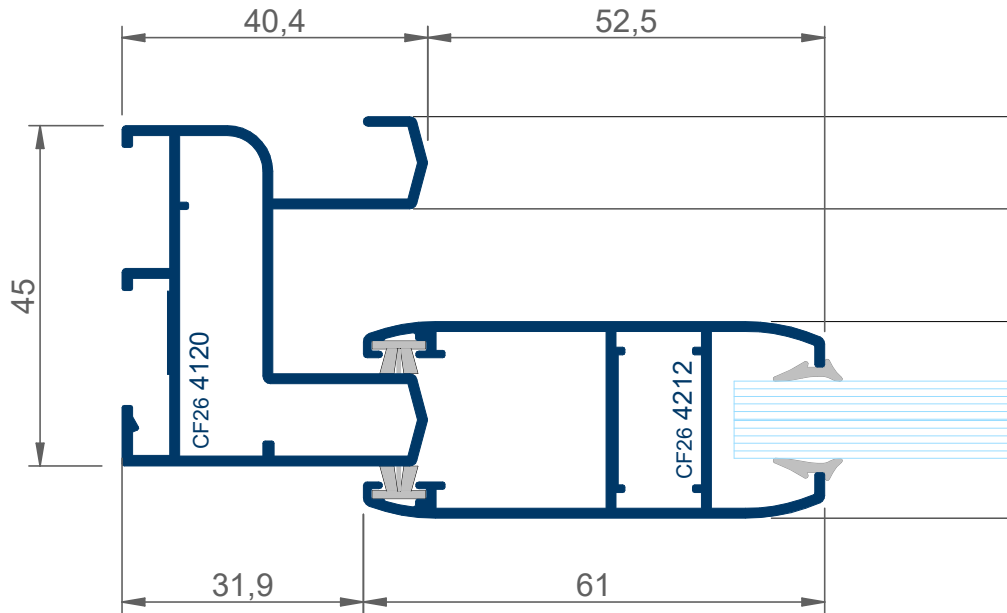
ENTRADA 15mm

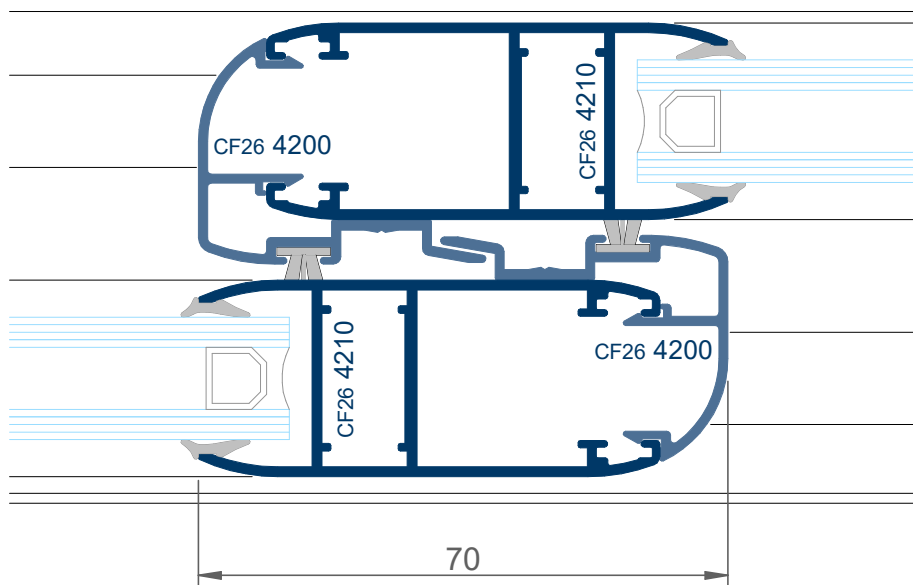
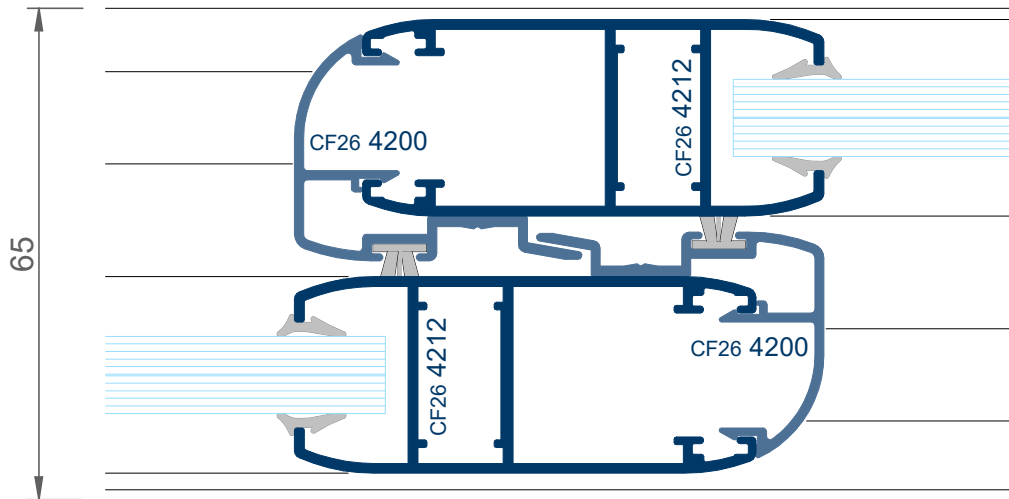
- A000 37473 mult (3 pto) con llave long 1800

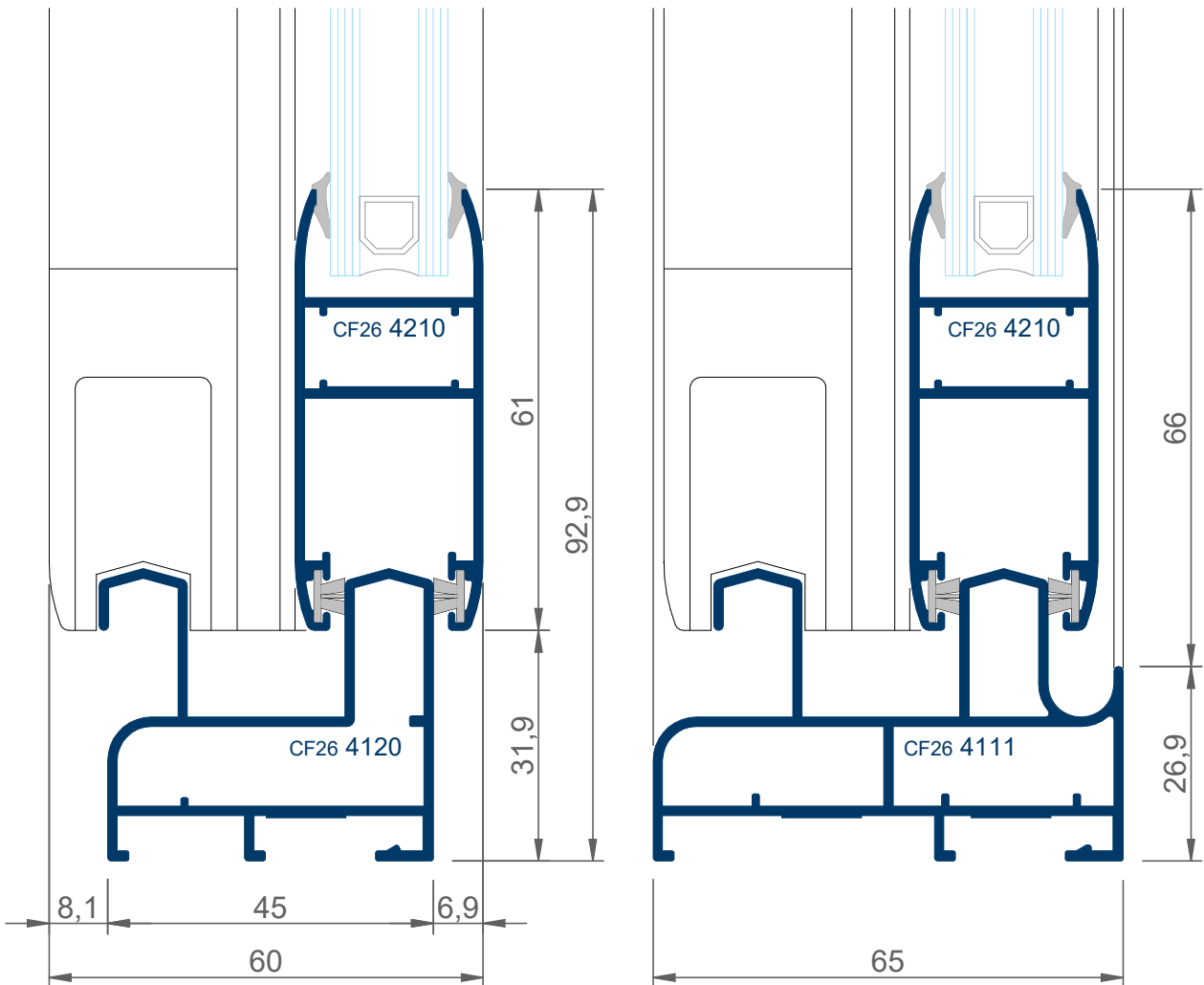
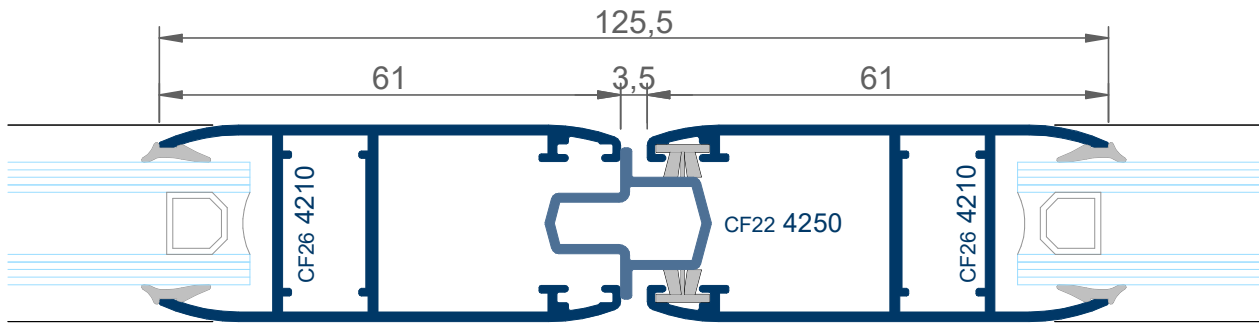
alt minima corred	1000	1400	2200
herraje entrada 7,5	A000 3746	A000 3747	A000 3748
herraje entrada 15			A000 37473
puntos de cierre	2	2	3
cerradero	A000 3742 (2uds)	A000 3742 (2uds)	A000 3742 (3uds)
calce cerradero	A000 3741 (2uds)	A000 3741 (2uds)	A000 3741 (3uds)
cremona	A000 3xxx (1 ud)	A000 3xxx (1 ud)	A000 3xxx (1 ud)

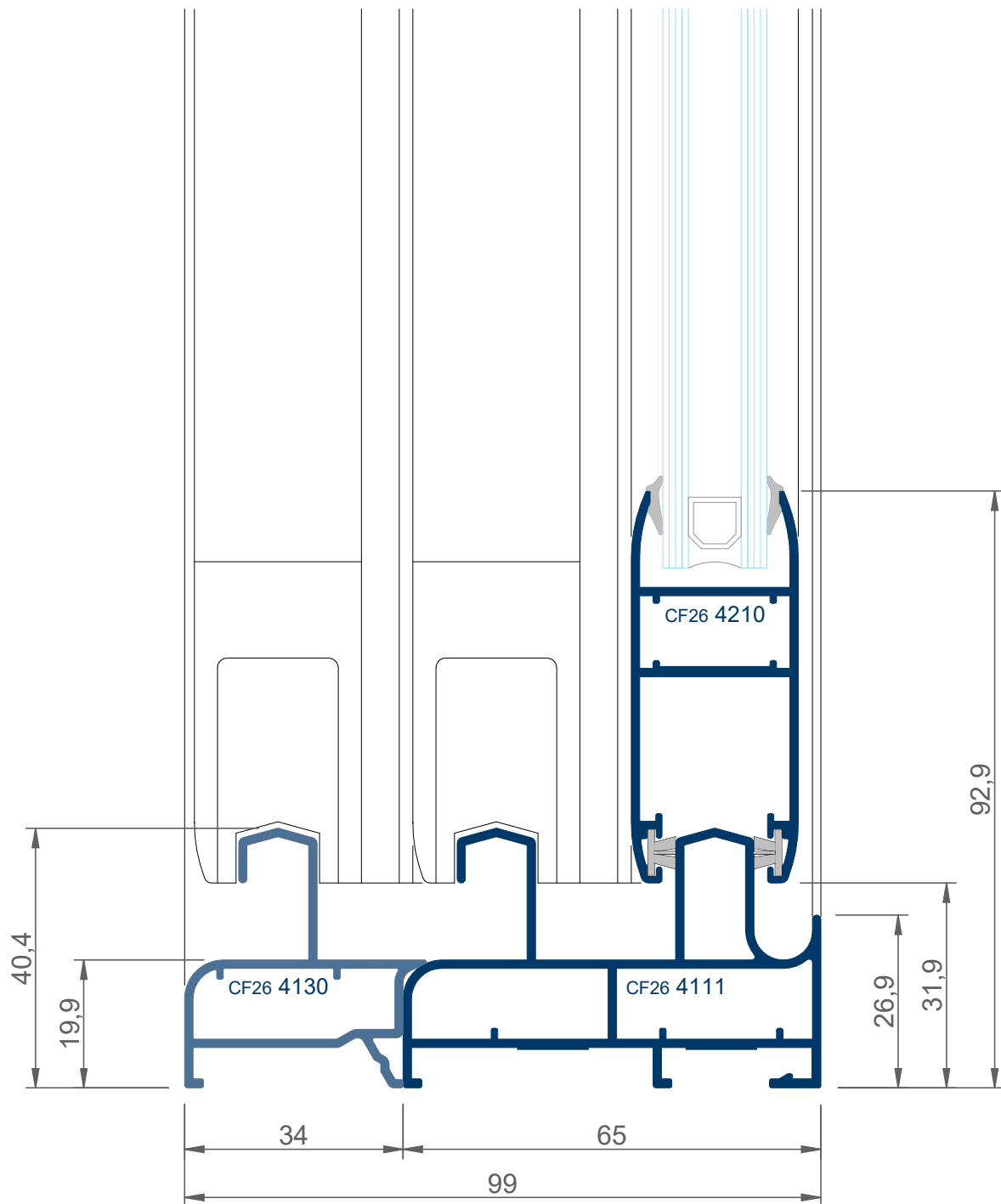
Diseño
Confort
Silencio

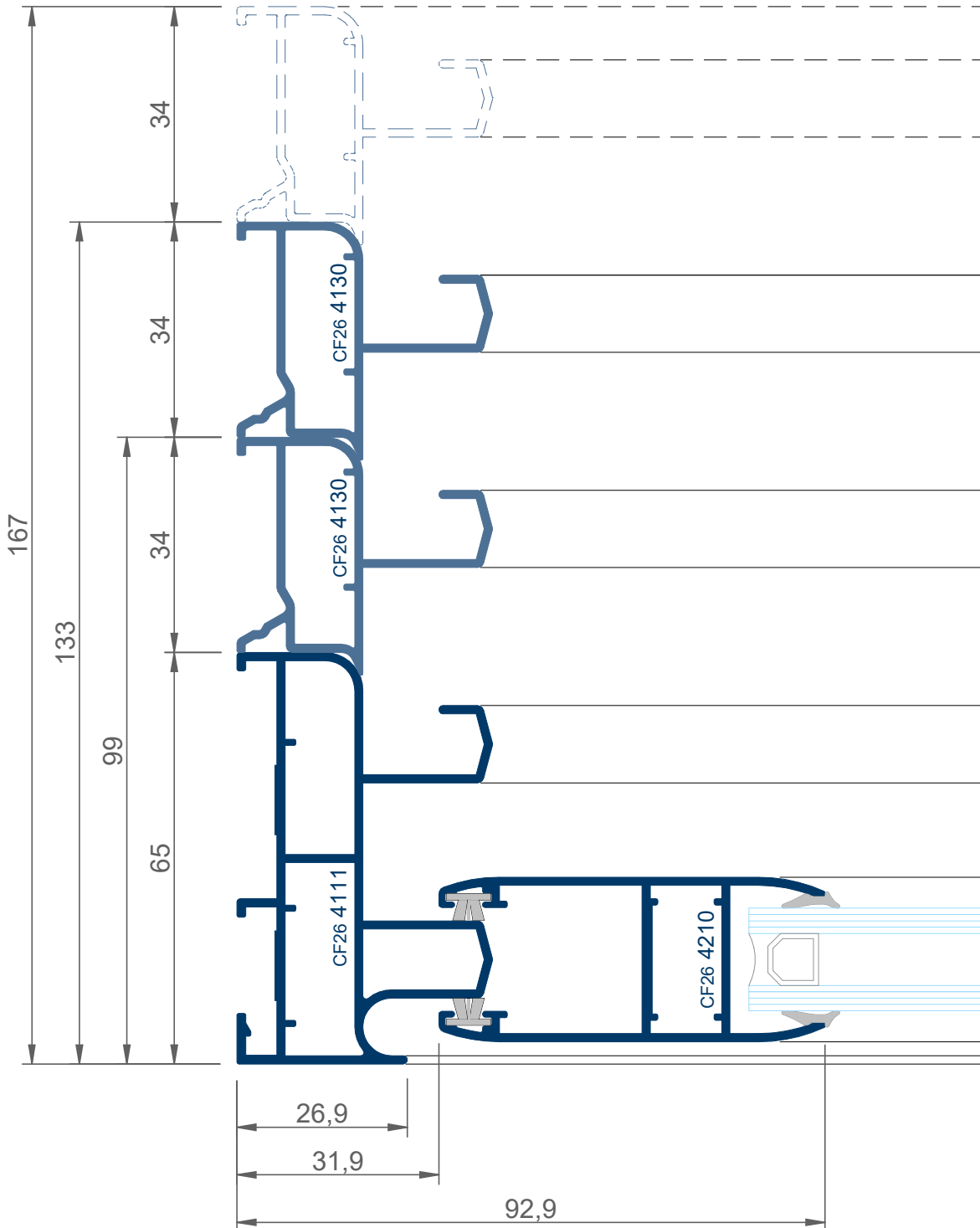


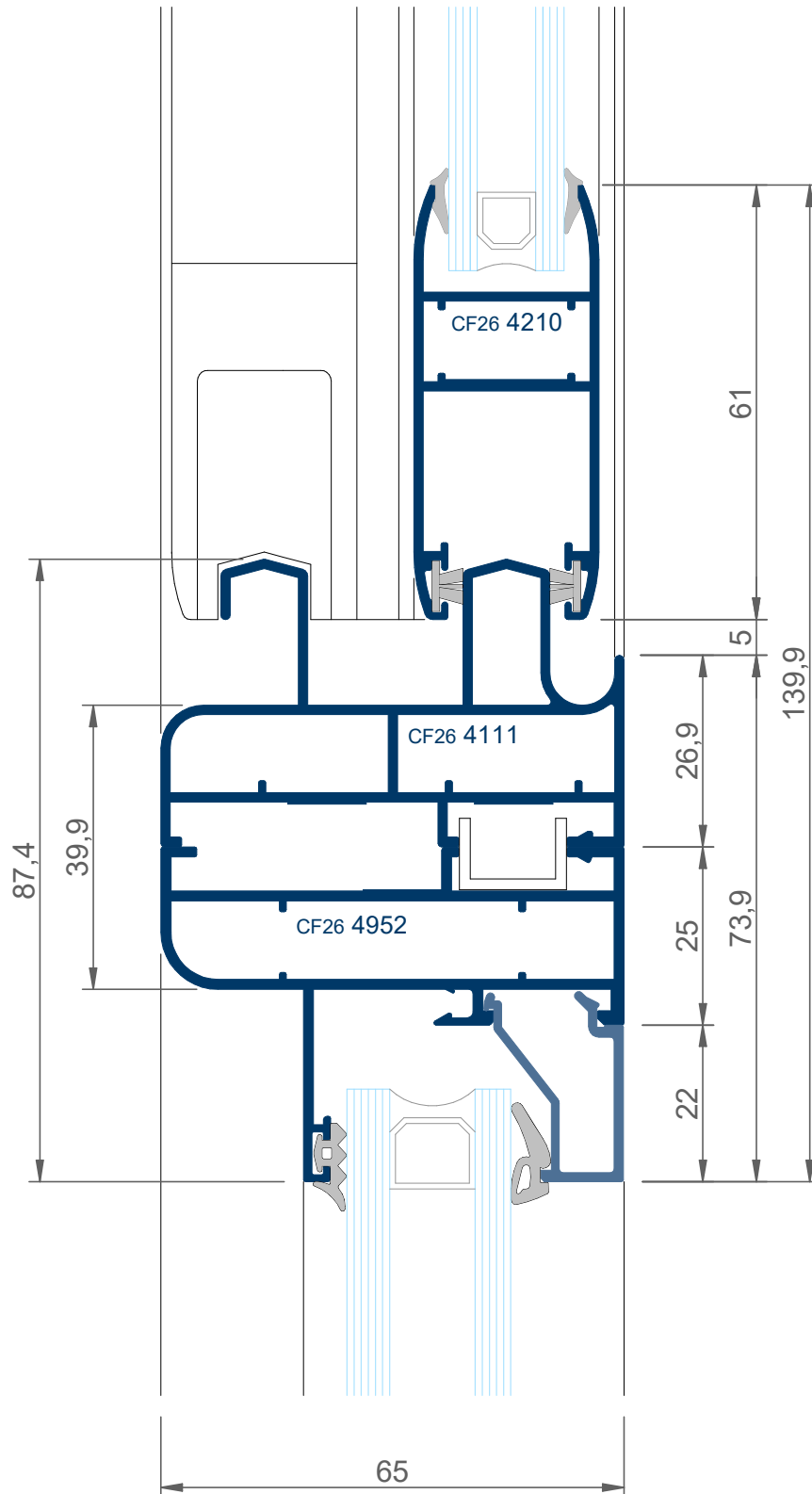




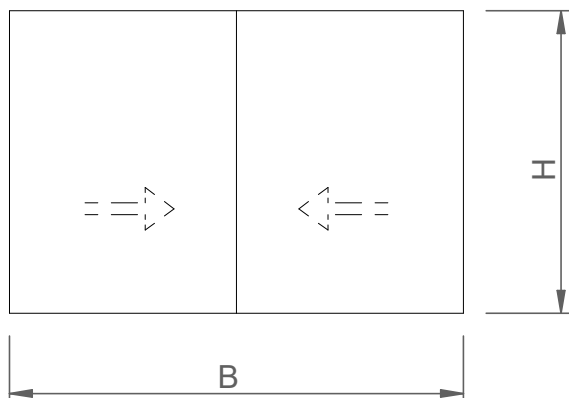






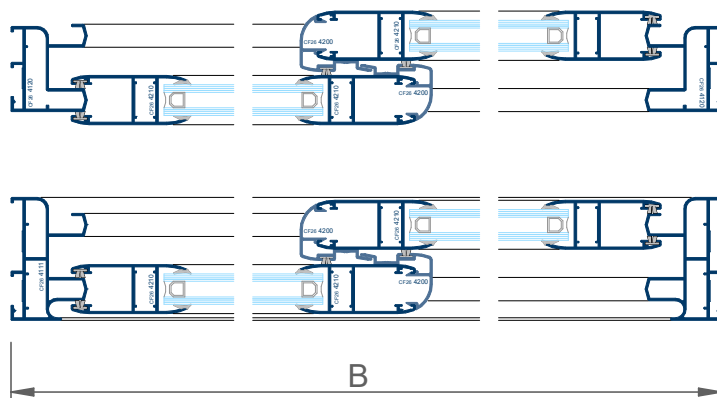
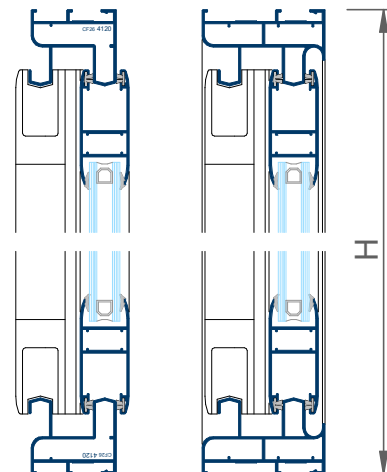


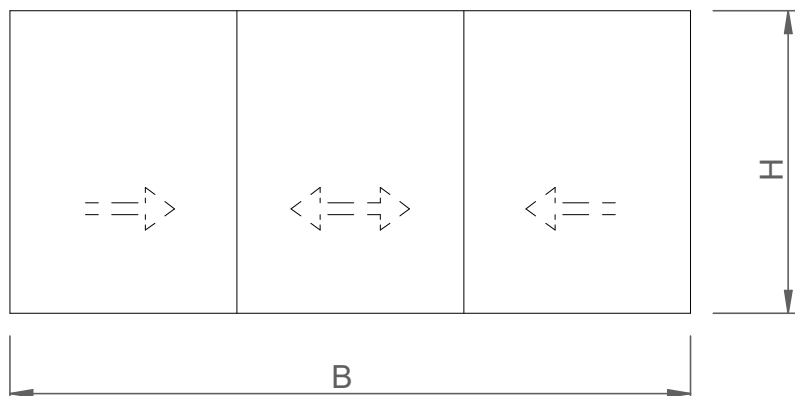
Diseño
Confort
Silencio



FORMULAS DE CORTE				
		UDS	FORMULA	FORMA
marco horizontal	CF26.4111/20	2	B	\---/
marco vertical	CF26.4111/20	2	H	\---/
hoja horizontal	CF26.4210	4	(B-12)/2	\---/
hoja vertical	CF26.4210	4	H-64	\---/
perfil de cruce central	CF26.4200	2	H-164	---
	vidrio	2	(B-208)/2 x H-162	

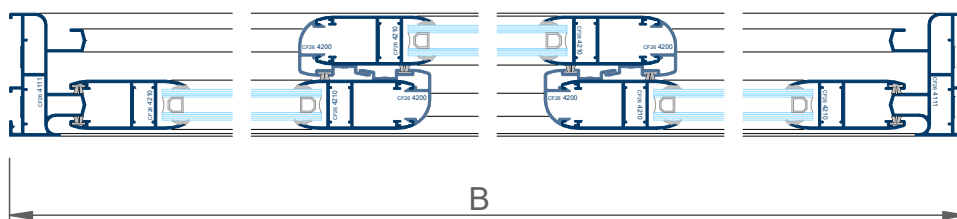
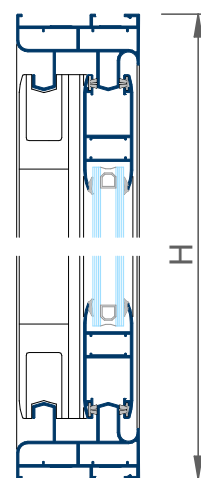
ACCESORIOS		
		UDS
escuadra marco	A000.2110	8
escuadra hoja	A000.2110	8
deflector con lamina	A000.2300	2
cortavientos superior	A000.2347	1
cortavientos inferior	A000.2346	1
juego piezas interior hoja	CF26.2311	2
juego tapas centrales hoja	CF26.2310	2
ruedas (según peso)	CF26.376X	4
cierre (según modelo)	ver D02 a D03	2
cepillo de cierre	A000.2374	6H+4B

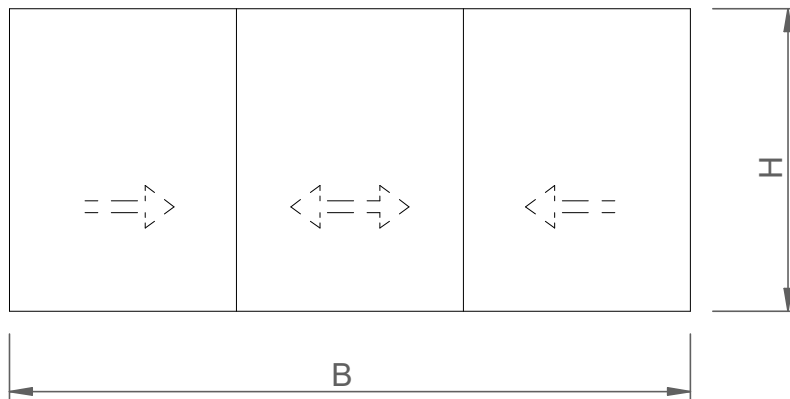




FORMULAS DE CORTE				
		UDS	FORMULA	FORMA
marco horizontal	CF26.4111	2	B	\ --- /
marco vertical	CF26.4111	2	H	\ --- /
hoja horizontal	CF26.4210	6	(B+40)/3	\ --- /
hoja vertical	CF26.4210	6	H-64	\ --- /
perfil de cruce central	CF26.4200	4	H-164	---
vidrio		3	(B-254)/3 x H-162	

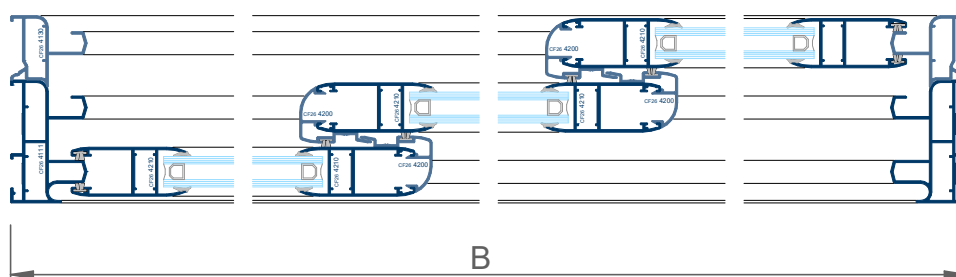
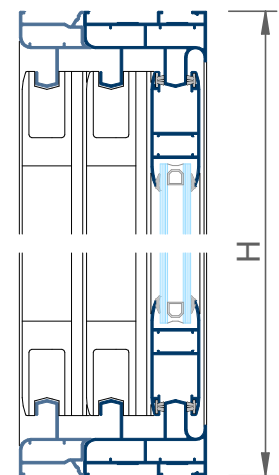
ACCESORIOS		
		UDS
escuadra marco	A000.2110	8
escuadra hoja	A000.2110	12
deflector con lamina	A000.2300	4
cortavientos superior	A000.2347	2
cortavientos inferior	A000.2346	2
juego piezas interior hoja	CF26.2311	2
juego tapas centrales hoja	CF26.2310	4
ruedas (según peso)	CF26.376X	6
cierre (según modelo)	ver D02 a D03	2
cepillo de cierre	A000.2374	8H+4B

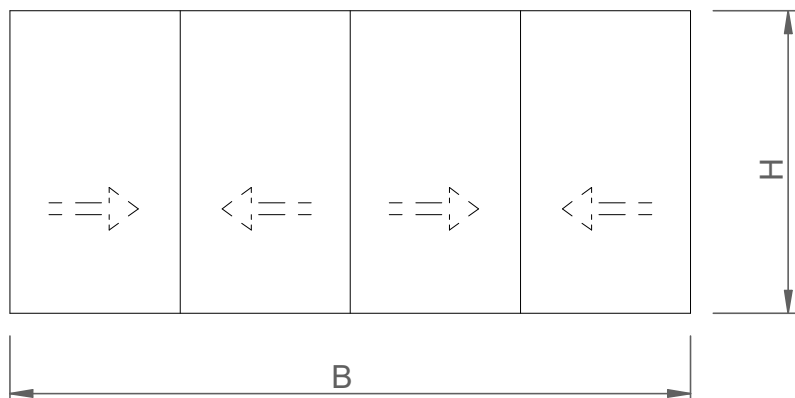




FORMULAS DE CORTE				
		UDS	FORMULA	FORMA
marco horizontal	CF26.4111	2	B	\ --- /
marco vertical	CF26.4111	2	H	\ --- /
marco rail adicional hor	CF26.4130	2	B	\ --- /
marco rail adicional vert	CF26.4130	2	H	\ --- /
hoja horizontal	CF26.4210	6	$(B+40)/3$	\ --- /
hoja vertical	CF26.4210	6	H-64	\ --- /
perfil de cruce central	CF26.4200	4	H-164	---
vidrio	3		$(B-254)/3$ x H-162	

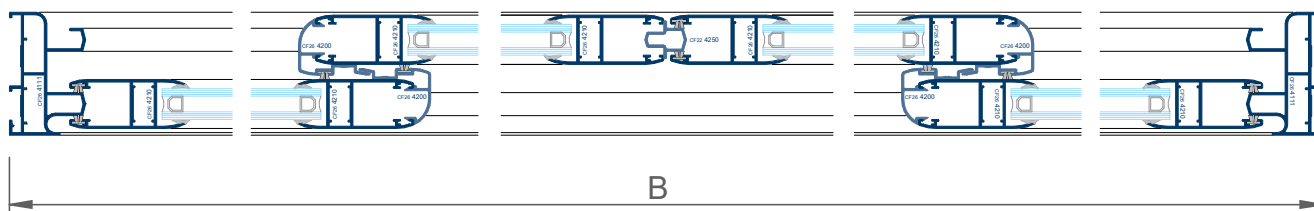
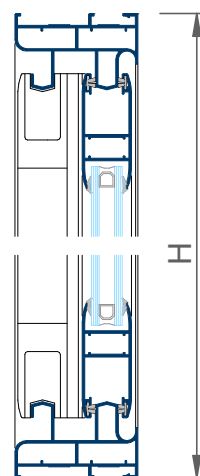
ACCESORIOS			UDS
escuadra marco	A000.2110		12
escuadra hoja	A000.2110		12
deflector con lamina	A000.2300		4
cortavientos superior	A000.2347		2
cortavientos inferior	A000.2346		2
juego piezas interior hoja	CF26.2311		2
juego tapas centrales hoja	CF26.2310		4
ruedas (según peso)	CF26.376X		6
cierre (según modelo)	ver D02 a D03		2
cepillo de cierre	A000.2374		8H+4B

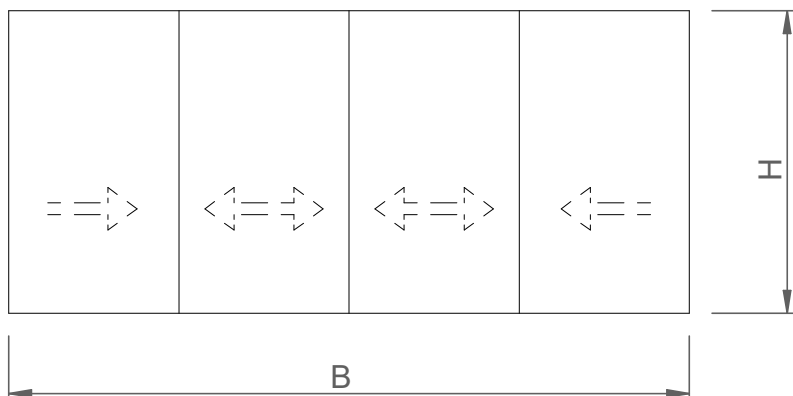




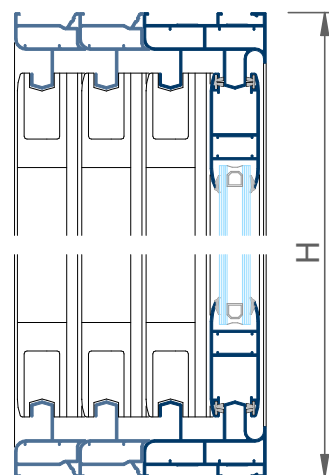
FORMULAS DE CORTE				
		UDS	FORMULA	FORMA
marco horizontal	CF26.4111	2	B	\---/
marco vertical	CF26.4111	2	H	\---/
hoja horizontal	CF26.4210	8	$(B+36)/4$	\---/
hoja vertical	CF26.4210	8	H-64	\---/
perfil encuentro hoja	CF22.4250	1	H-144	---
perfil de cruce central	CF26.4200	4	H-164	---
vidrio		4	$(B-355)/4 \times H-162$	

ACCESORIOS			UDS
escuadra marco	A000.2110		8
escuadra hoja	A000.2110		16
deflector con lamina	A000.2300		4
cortavientos superior	A000.2347		2
cortavientos inferior	A000.2346		2
juego piezas interior hoja	CF26.2311		4
juego tapas centrales hoja	CF26.2310		4
tapa terminal perfil CF224250	CF26.2350		2
base perfil CF224250	CF26.2351		4
ruedas (según peso)	CF26.376X		8
cierre (según modelo)	<i>ver D02 a D03</i>		3
cepillo de cierre	A000.2374		10H+4B

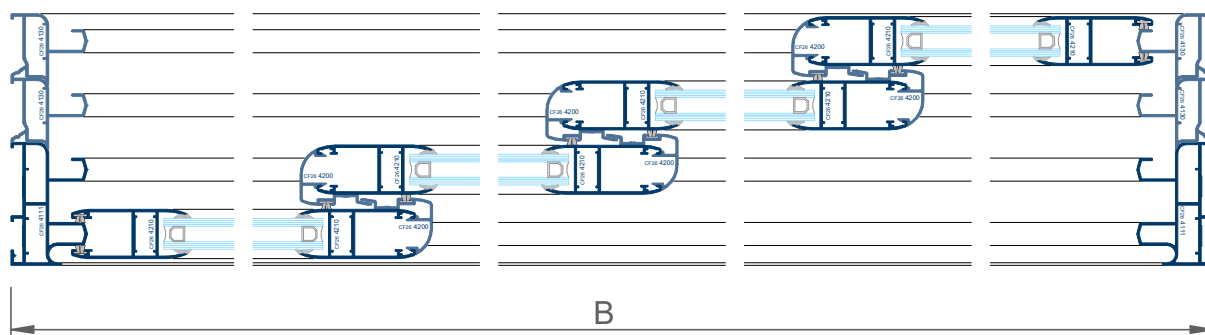


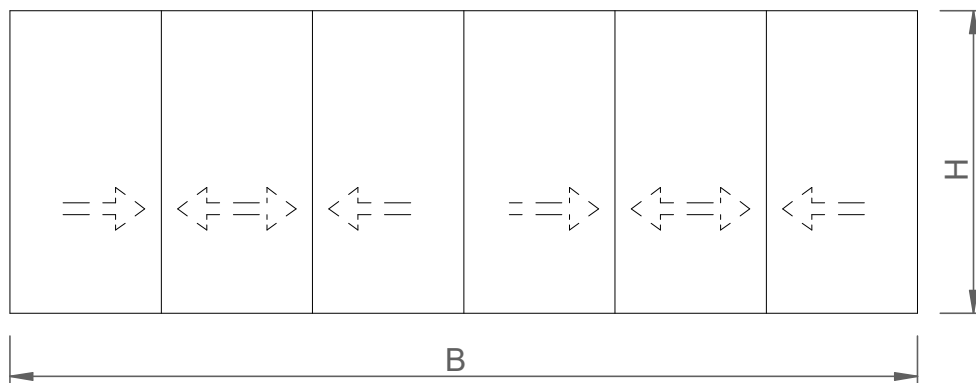


FORMULAS DE CORTE				
		UDS	FORMULA	FORMA
marco horizontal	CF26.4111	2	B	\---/
marco vertical	CF26.4111	2	H	\---/
marco rail adicional hor	CF26.4130	4	B	\---/
marco rail adicional vert	CF26.4130	4	H	\---/
hoja horizontal	CF26.4210	8	(B+94)/4	\---/
hoja vertical	CF26.4210	8	H-64	\---/
perfil de cruce central	CF26.4200	6	H-164	---
vidrio		4	(B-298)/4 x H-162	



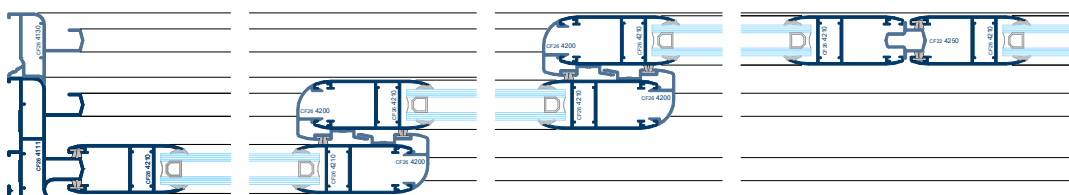
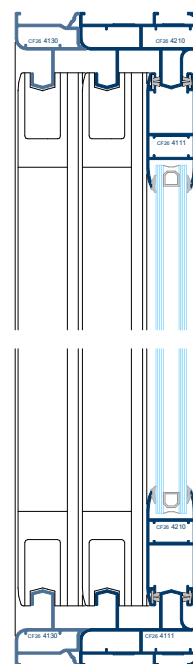
ACCESORIOS			UDS
escuadra marco	A000.2110		16
escuadra hoja	A000.2110		16
deflector con lamina	A000.2300		8
cortavientos superior	A000.2347		3
cortavientos inferior	A000.2346		3
juego piezas interior hoja	CF26.2311		2
juego tapas centrales hoja	CF26.2310		6
ruedas (según peso)	CF26.376X		8
cierre (según modelo)	ver D02 a D03		2
cepillo de cierre	A000.2374		10H+4B





FORMULAS DE CORTE			
	UDS	FORMULA	FORMA
marco horizontal CF26.4111	2	B	\---/
marco vertical CF26.4111	2	H	\---/
marco adicional vertical CF26.4130	2	H	\---/
marco adicional horizontal CF26.4130	2	B	\---/
hoja horizontal CF26.4210	12	$(B+140)/6$	\---/
hoja vertical CF26.4210	12	H-64	\---/
perfil encuentro hoja CF22.4250	1	H-144	---
perfil de cruce central CF26.4200	8	H-164	---
vidrio	6	$(B-447)/6 \times H-162$	

ACCESORIOS		
		UDS
escuadra marco	A000.2110	12
escuadra hoja	A000.2110	24
deflector con lamina	A000.2300	6
cortavientos superior	A000.2347	4
cortavientos inferior	A000.2346	4
juego piezas interior hoja	CF26.2311	6
juego tapas centrales hoja	CF26.2310	8
tapa terminal perfil CF224250	CF26.2350	2
base perfil CF224250	CF26.2351	4
ruedas (según peso)	CF26.376X	12
cierre (según modelo)	<i>ver D02 a D03</i>	3
cepillo de cierre	A000.2374	14H+4B



Ventanas para **vivir mejor**

THERMIA®

B A R C E L O N A

Sede Central en Barcelona

C/ Narcís Monturiol, 34
08192 Sant Quirze del Vallès
Barcelona (España)
Tel. +34 937 121 237
contacto@thermiabarcelona.com

Delegación Área Andina

Los Telares, 289
Urbanización Industrial Vulcano
Ate, Lima (Perú)
Tel. +51-1-7197649

Showrooms

Barcelona

Narcís Monturiol, 34
08192 Sant Quirze Vallès
Barcelona (España)
Tel. +34 937 121 237

Girona

Carrer Sant Jordi, 2
Local 4 - Sarrià de Ter
Girona (España)
Tel. +34 937 121 237

Lima

Paseo de la República, 3583
2o. Piso - San Isidro
Lima (Perú)
Tel. +51-1-7197649

THERMIABARCELONA.COM

