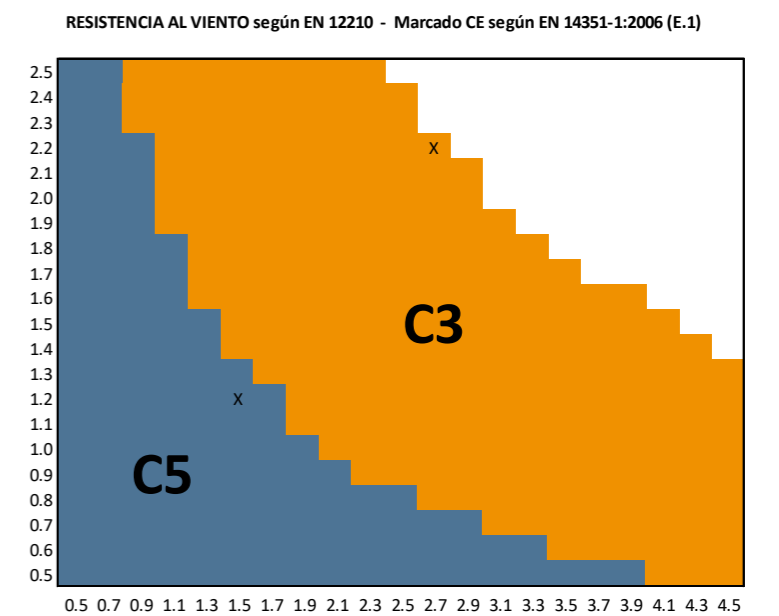
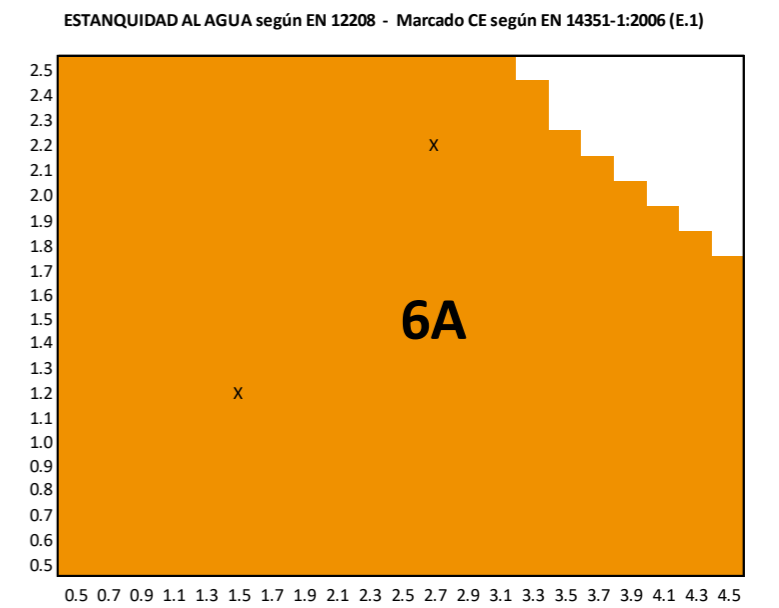
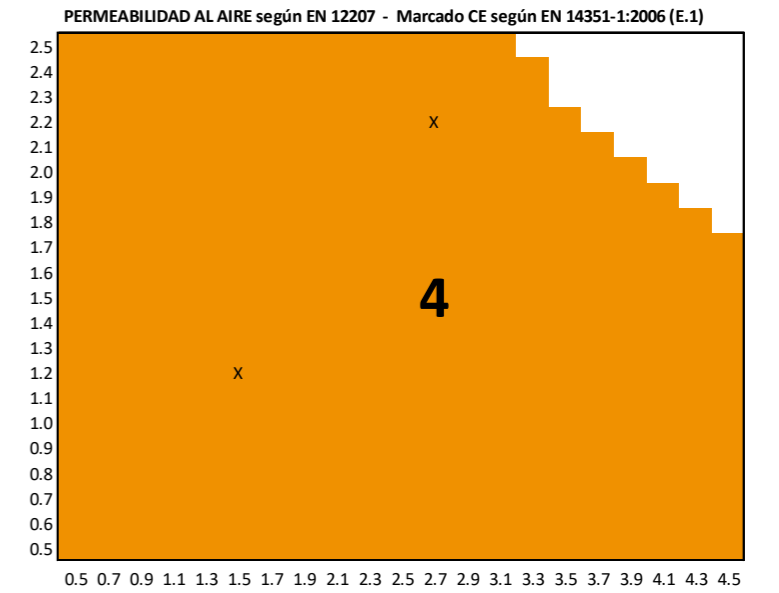


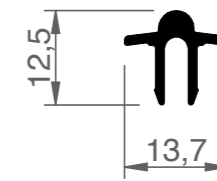
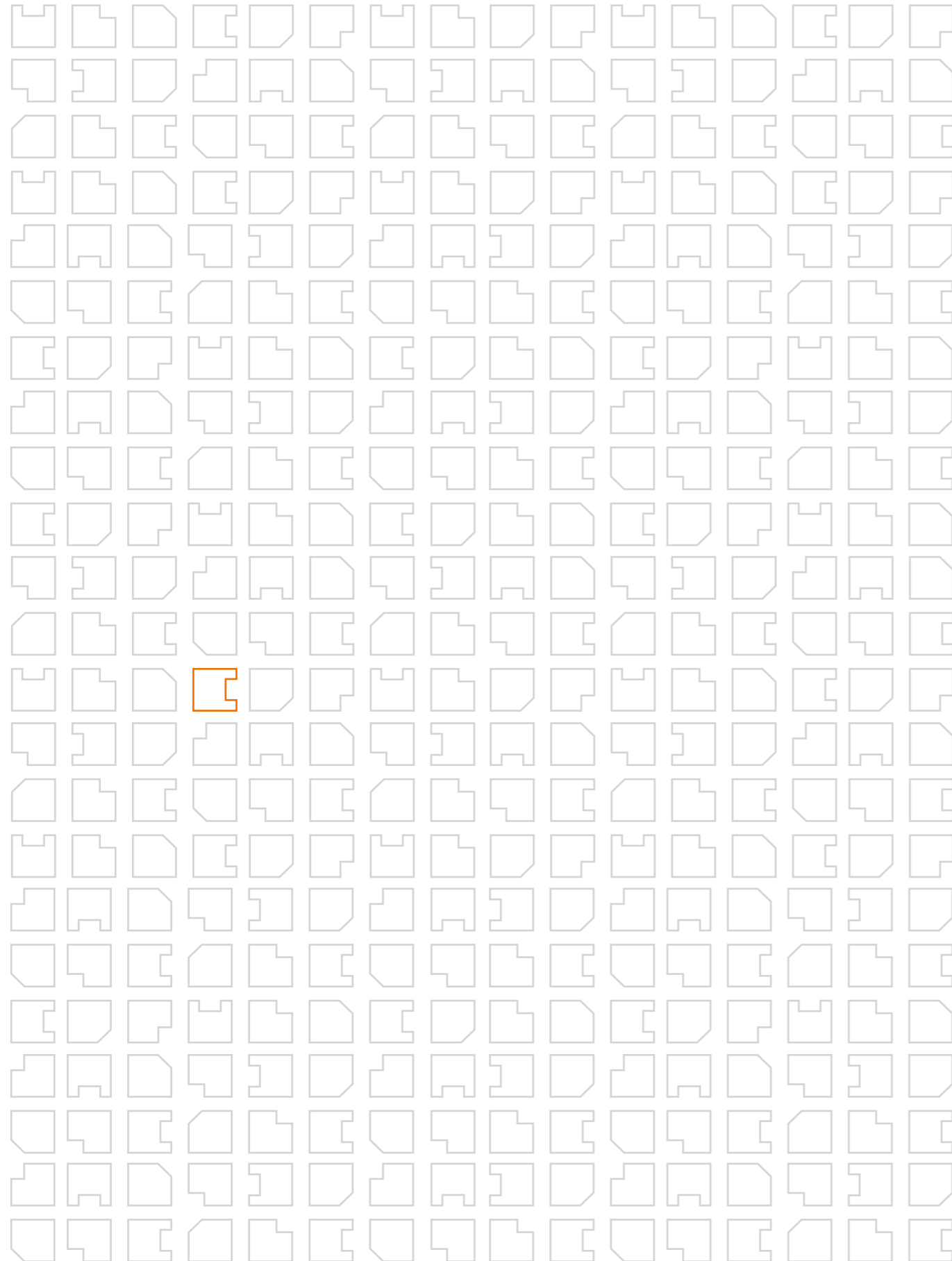


THERMIA® CR46 MAGNA
Conecta con el exterior.

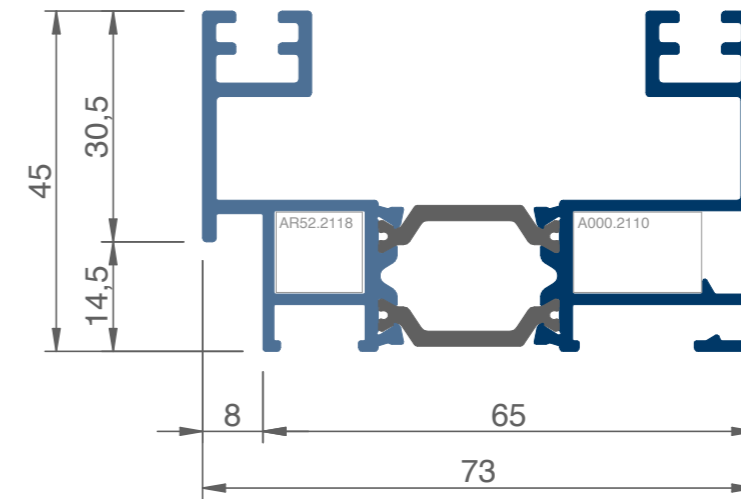
Ventanas para vivir mejor



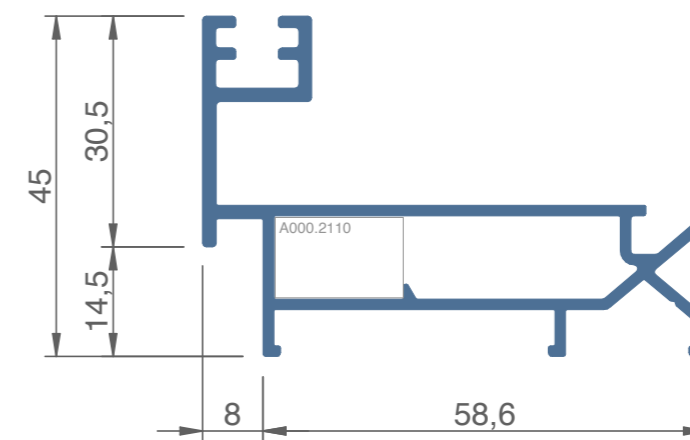
Resultados obtenidos de los informes según ensayos en laboratorio interno, y en base al Anexo E de la norma EN 14351-1:2006+A2:2016



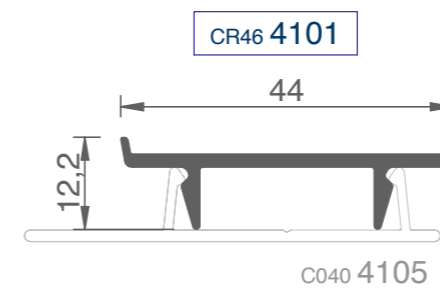
CR46 4100



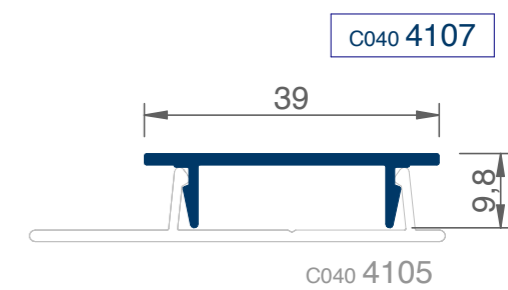
CR46 4110



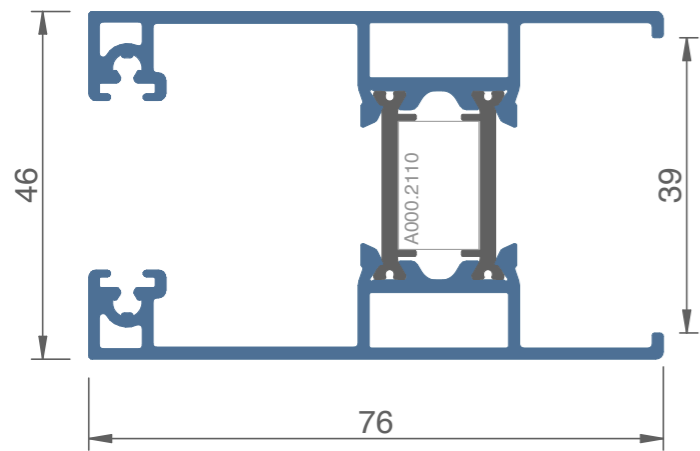
CR46 4130



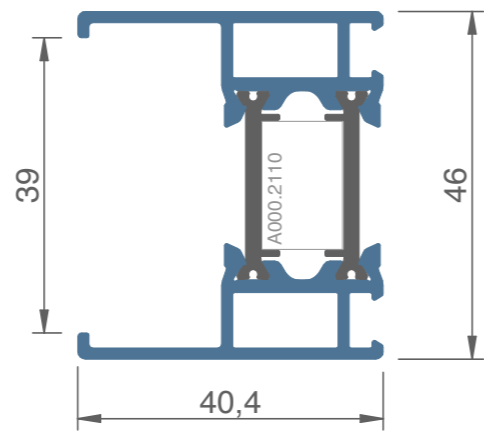
CR46 4101



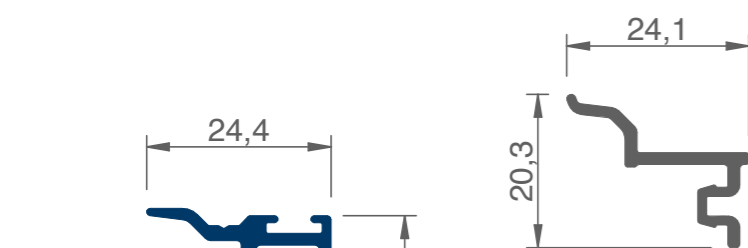
C040 4107



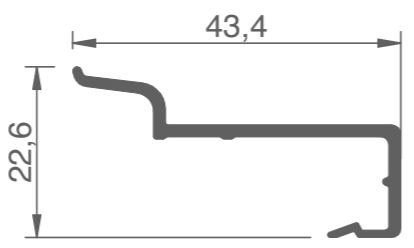
CR46 4220



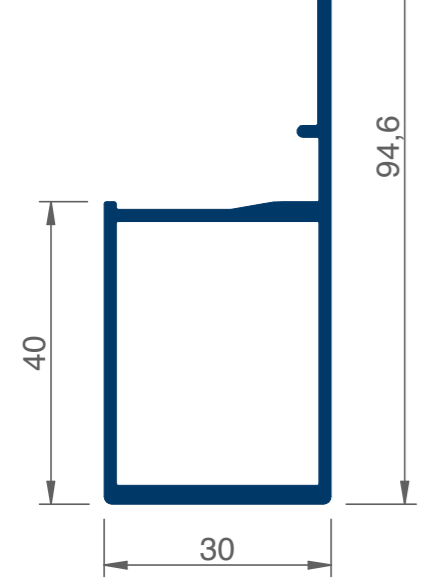
CR46 4222



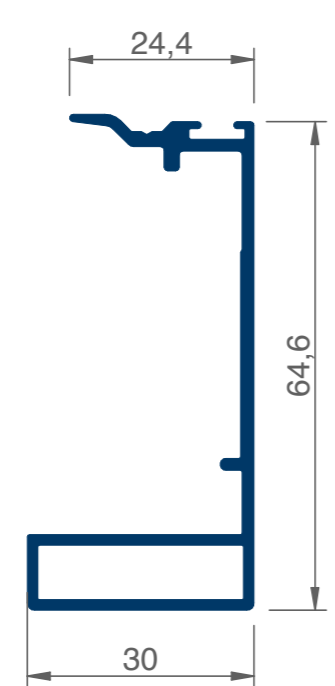
CR46 4203



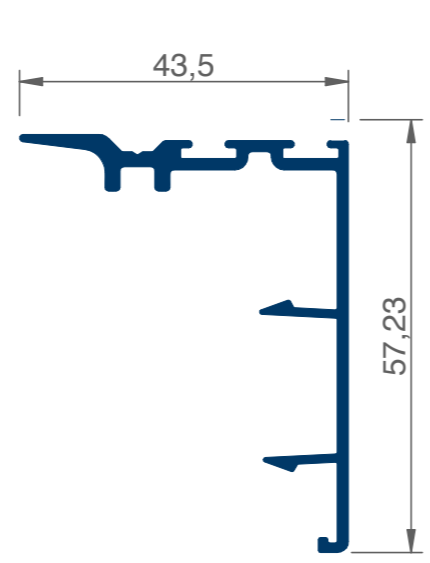
CR46 4205



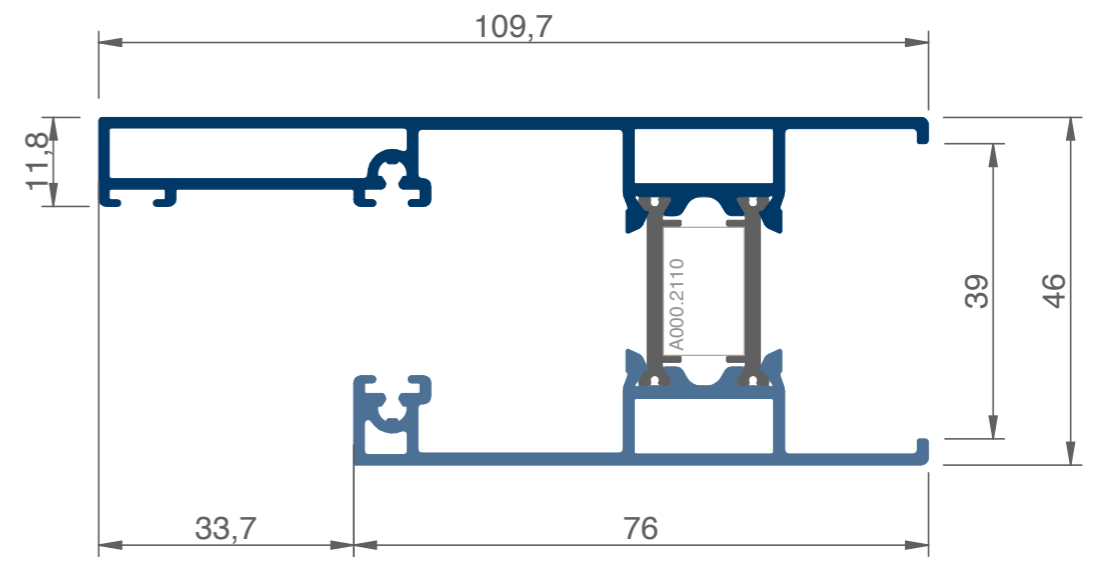
CR46 4202



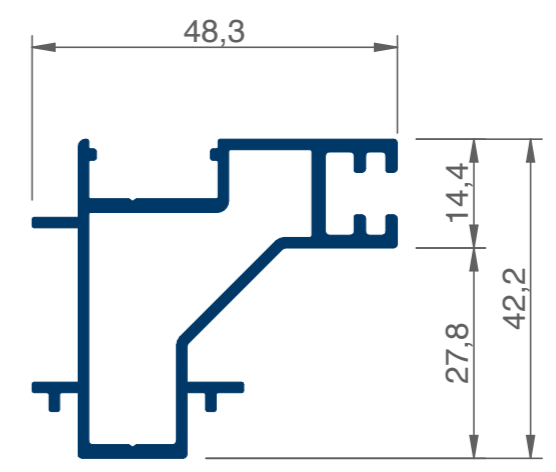
CR46 4201



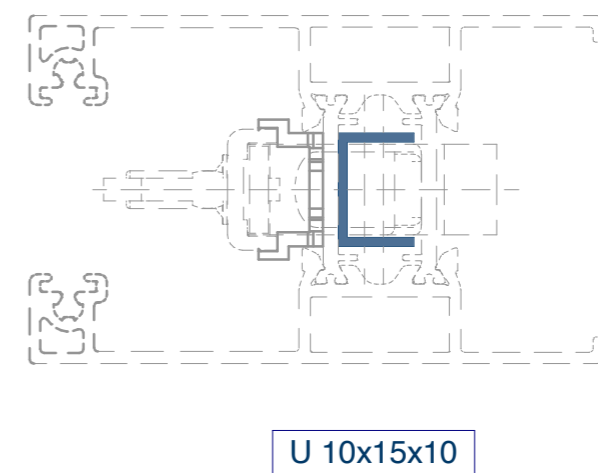
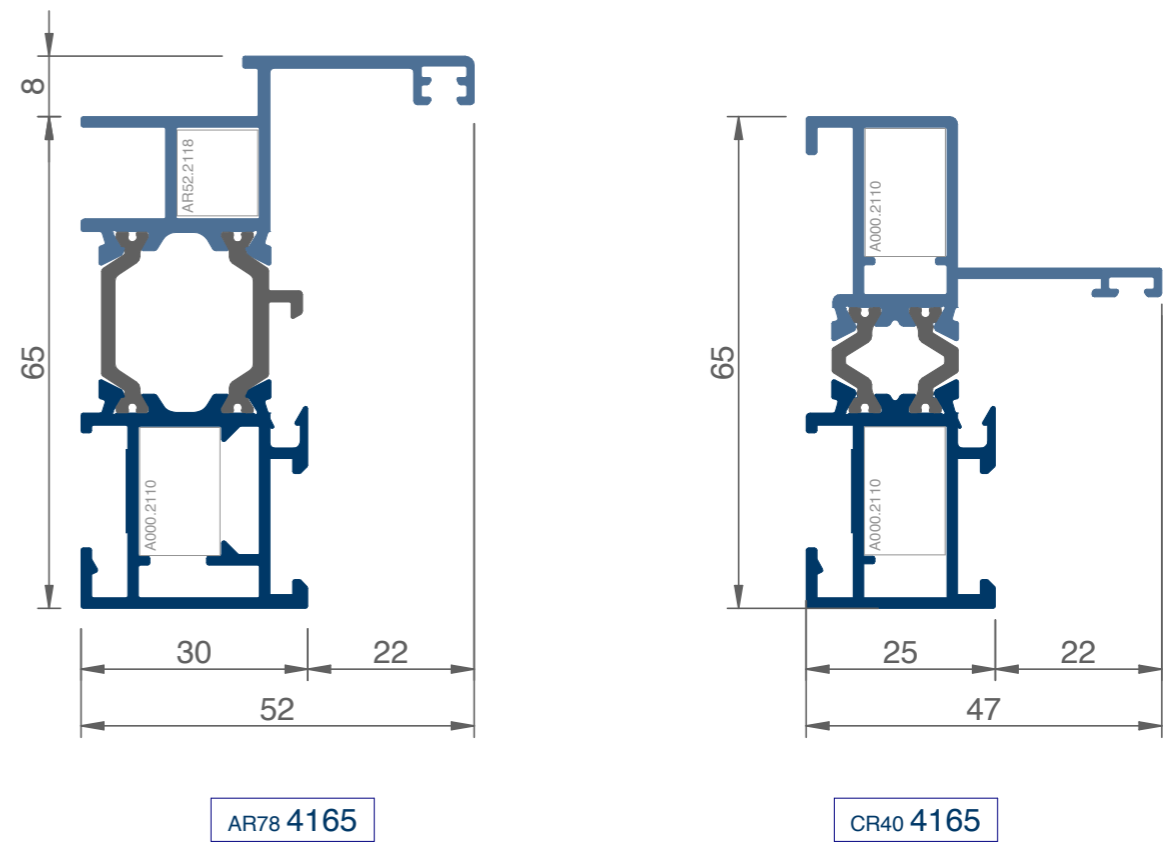
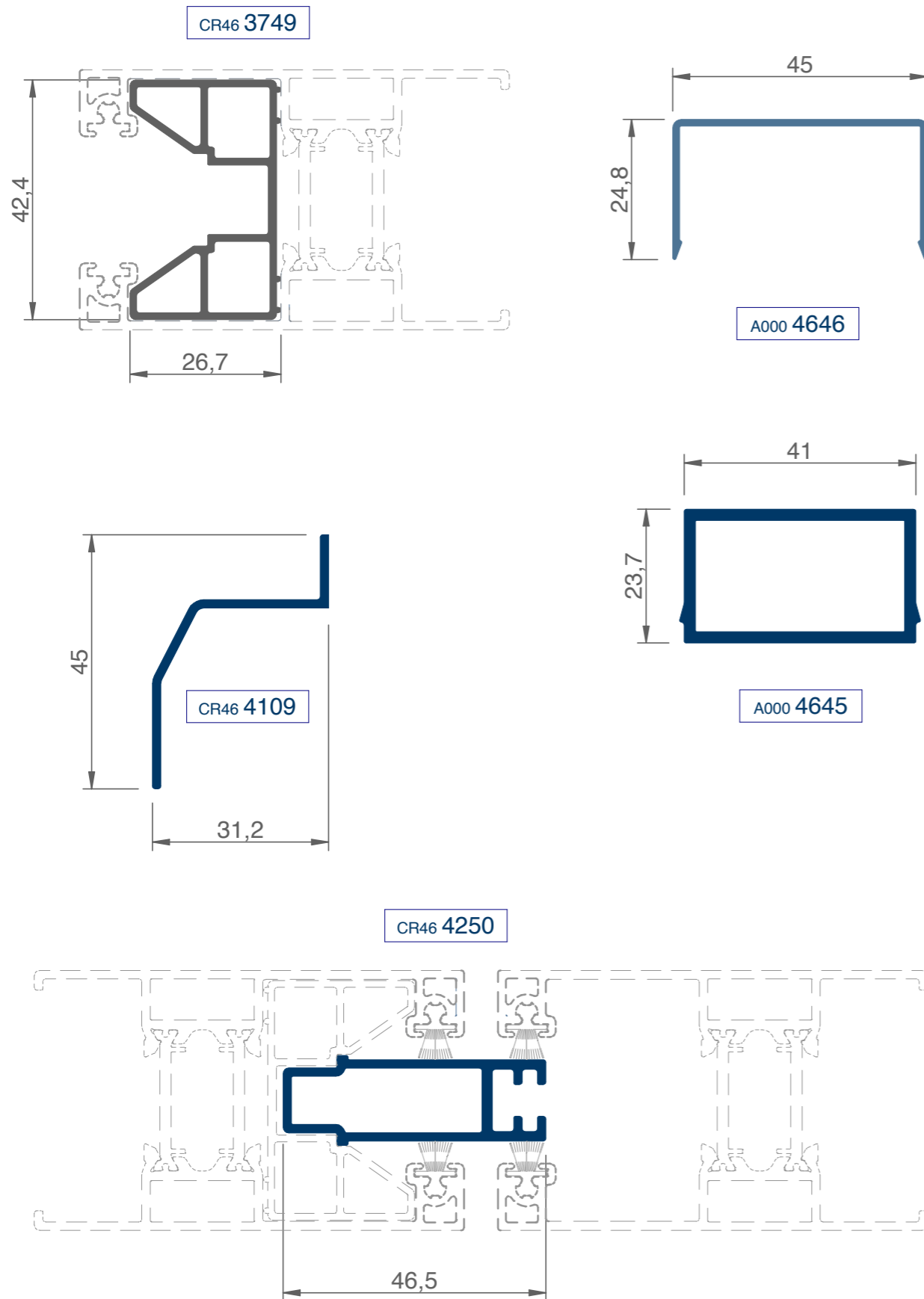
CR46 4206

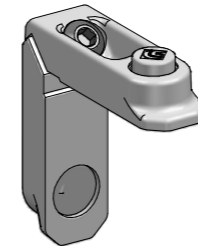
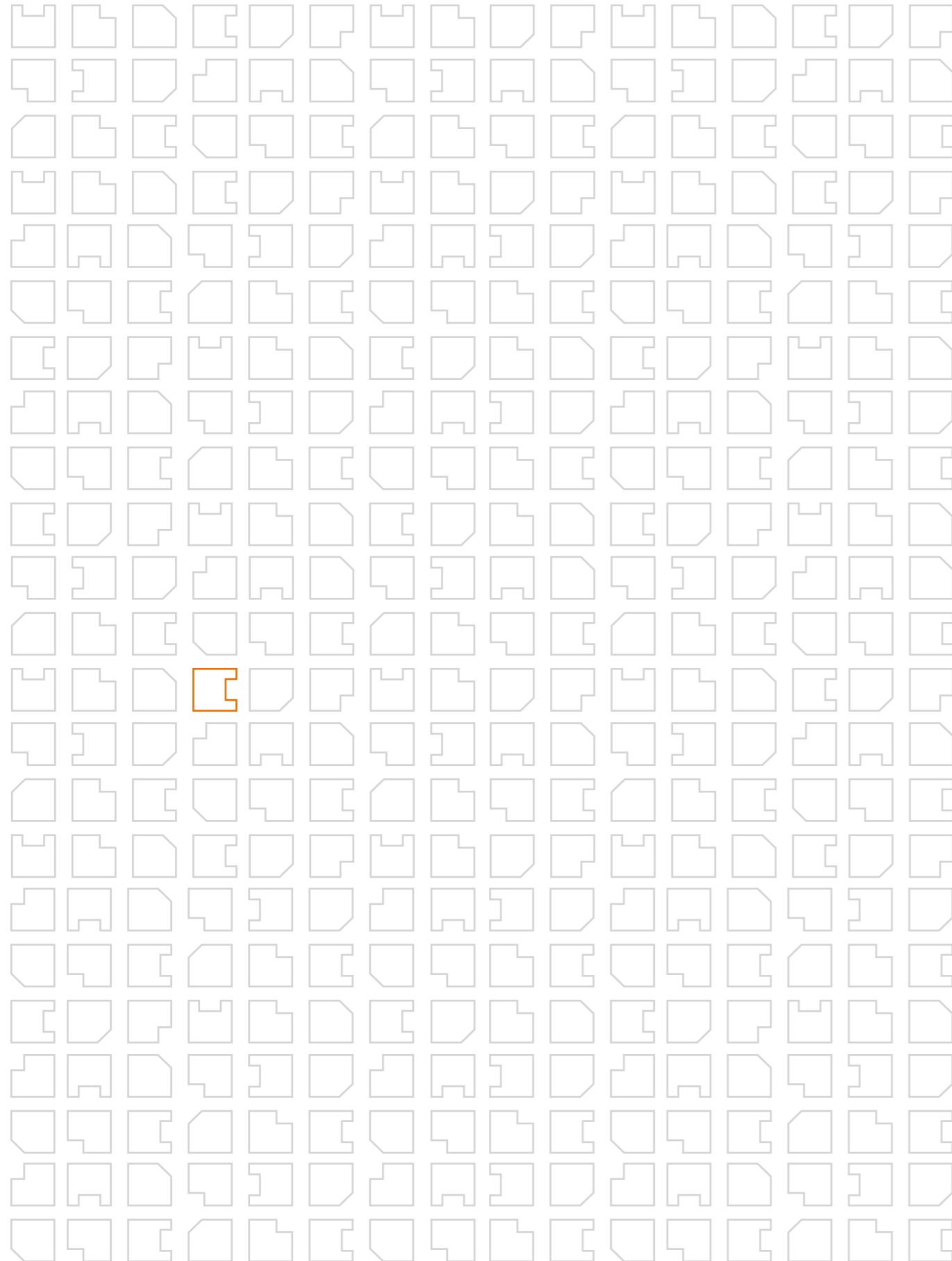


CR46 4254



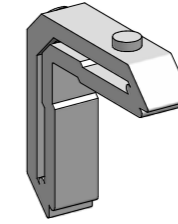
CR46 4251





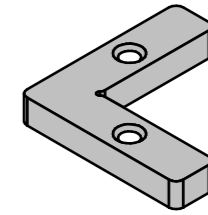
A000 2110

escuadra pivotes
17,2 x 11



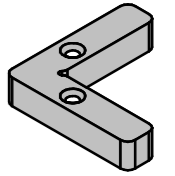
AR52 2118

escuadra bloqueo
12,1 x 11



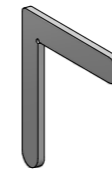
A00K 2110

escuadra marco
kiss 2110



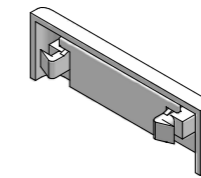
A00K 2112

escuadra marco
kiss 2112



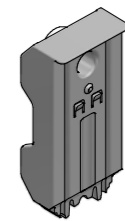
A000 2144

escuadra alineación



A000 2300

tapón deflector
con lámina



CR46 2312

tope final de carrera
y antielección



A000 2351

junta exterior (2mm)



A000 2352

junta exterior (6mm)



GC 1109

junta cuña (de 1,5mm)



GC 11012

junta cuña (de 2mm)



GC 11014

junta cuña (de 2,5mm)



A000 2353

junta cuña (de 3 a 5mm)



A000 2355

junta cuña (de 5 a 7mm)



A000 2357

junta cuña (de 7 a 9mm)



CR46 2301

junta ranura marco



A000 2370

junta estanqueidad



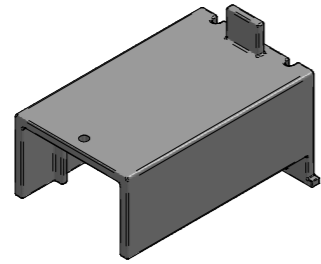
A000 2377

junta estanquidad fin-seal



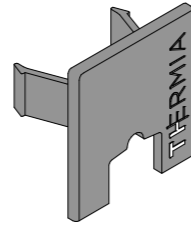
CF31 2352

junta tapa canal kiss



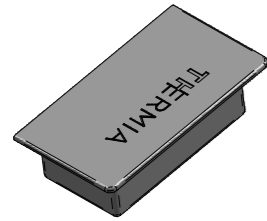
CR46 2311

pieza base para
CR462319



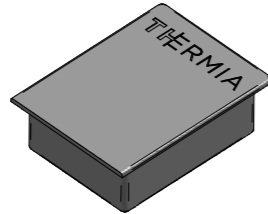
CR46 2319

pieza terminal cruce



A000 2303

tapa perfil ref
A0004646



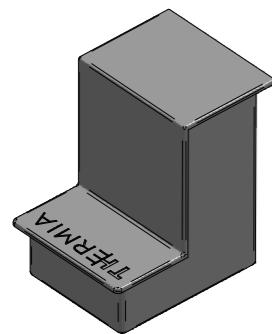
CR46 2302

tapa perfil
CR464202



CR46 2303

tapa perfil
CR464201



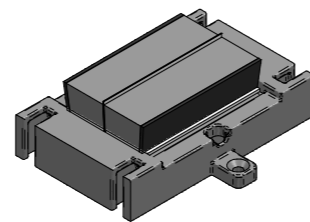
CR46 2304

tapa perfil
CR464202
(marco multicarril)



CR46 2350

pieza terminal
3-4 hojas



CR46 2317

cortavientos



CR46 2351

pieza inferior kiss



CR46 2352

pieza superior kiss



CR46 0860

tornillo fijacion
CR464201



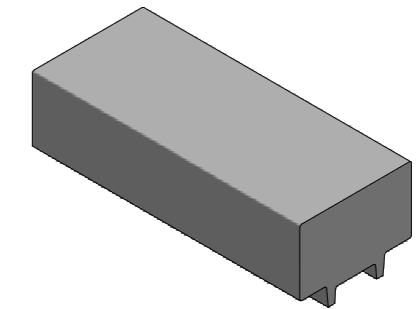
CR46 0870

tornillo fijacion
CR464202



CR46 3784

rueda tándem regulable
Pabose / (200 kg/hoja)



CR46 2331

pieza hoja fija



CR46 3786

rueda tándem regulable
(300 kg/hoja)



A000 3770

manilla tirador



CR46 3751

manilla hoja secundaria



A000 3260

manilla ltaia larga



A000 3278

manilla acodada derecha



A000 3279

manilla acodada izquierda



A000 3277

manilla tradicional

Cierres multipuntos
(con anti-falsa maniobra)

CR40 3745

multipunto (1 pto) long 260

CR40 3746

multipunto (2 pto) long 670

CR40 3748

multipunto (4 pto) long 1530

Tabla de aplicación			
ref multipunto	CR403745	CR403746	CR403748
H min hoja	515 mm	930 mm	1790 mm
admite cerradura	no	si	si
admite prolongador	si	si	si
puntos de cierre	1	2	4
cerradero	CR463712 (1uds)	CR463712 (2uds)	CR463712 (4uds)
cremona	A000xxxx (1 ud)	A000xxxx (1 ud)	A000xxxx (1 ud)
H min cremona	178 mm	500 mm	935 mm
kit apoyo herraje	CR463748 (1 ud)	CR463748 (3 ud)	CR463748 (5 ud)

CR40 3740

prolongador (1 pto)
long 500

CR46 3712

cerradero marco

CR46 3748

calzo base
multipunto

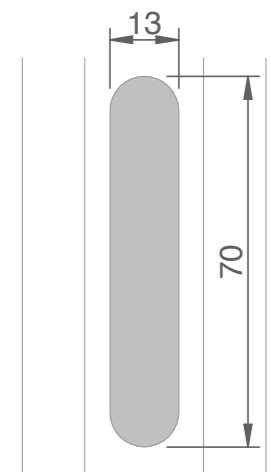
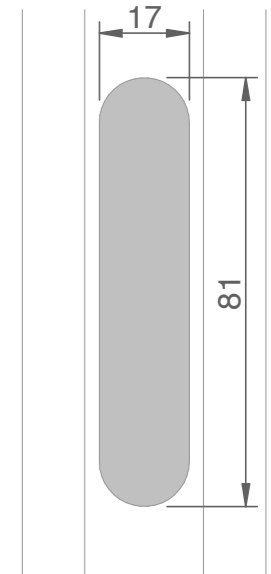
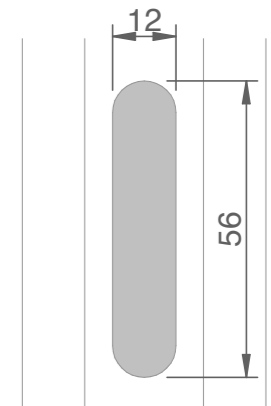
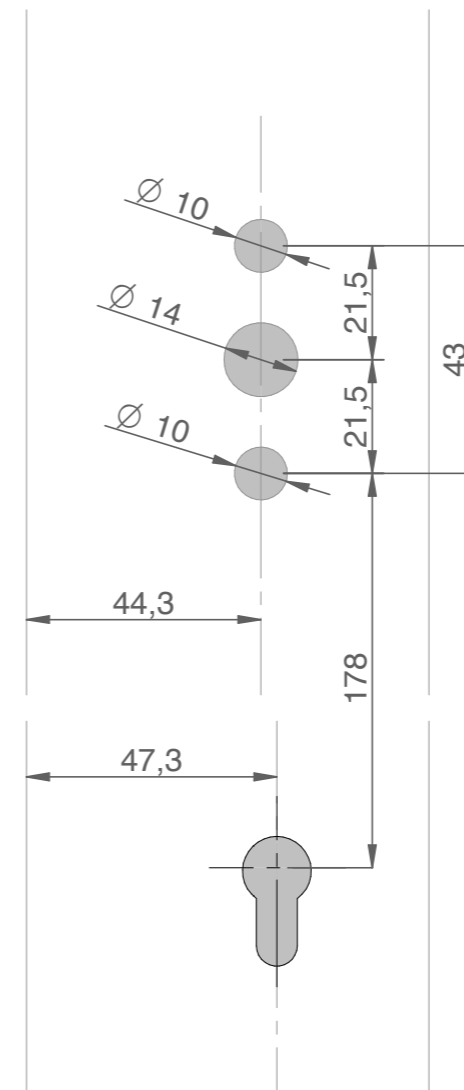
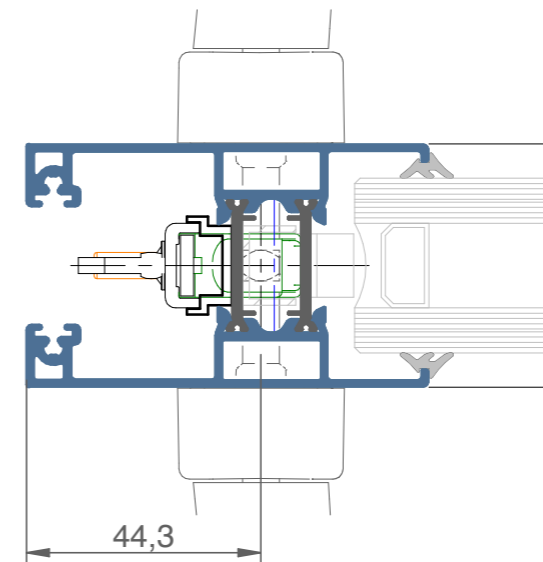
CR40 3749

kit cerradura
(sin cilindro)

CR40 3700

plantilla ajuste cerradero

Mecanizado hoja



Cierres multipuntos
(tradicionales E 7,5)

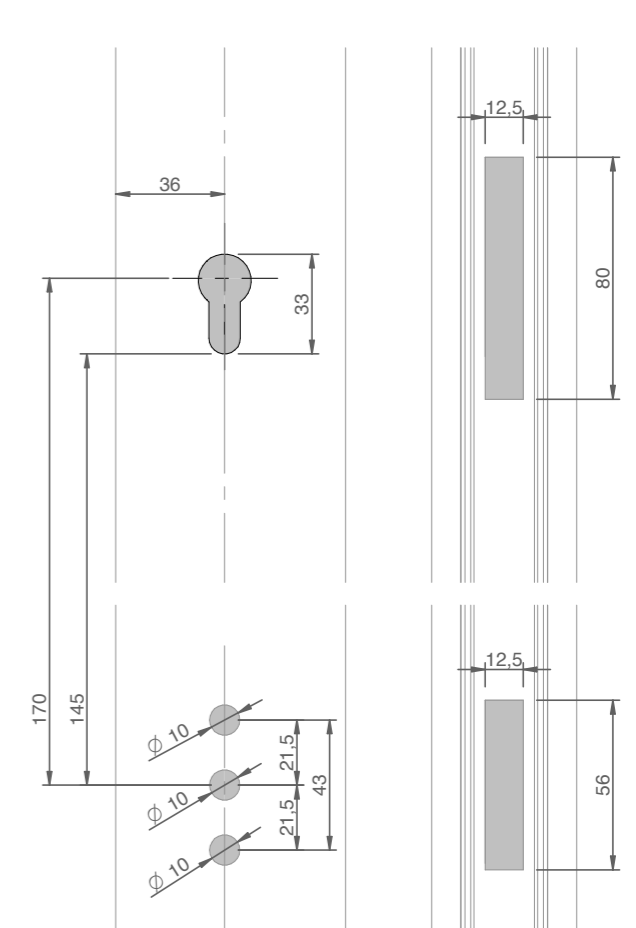
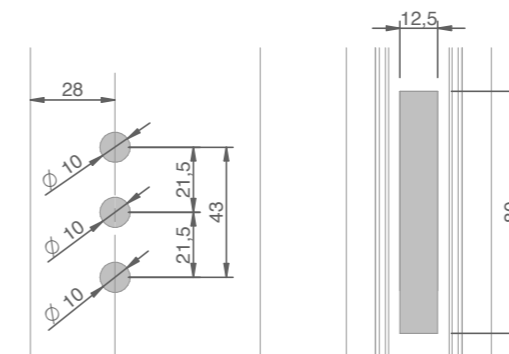
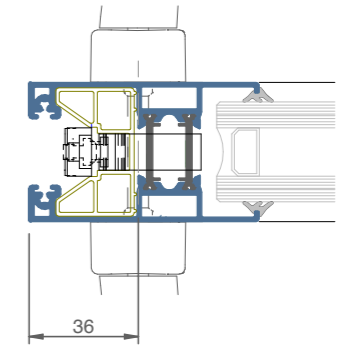
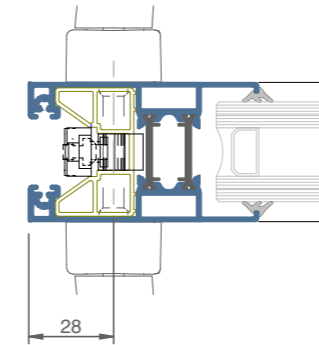
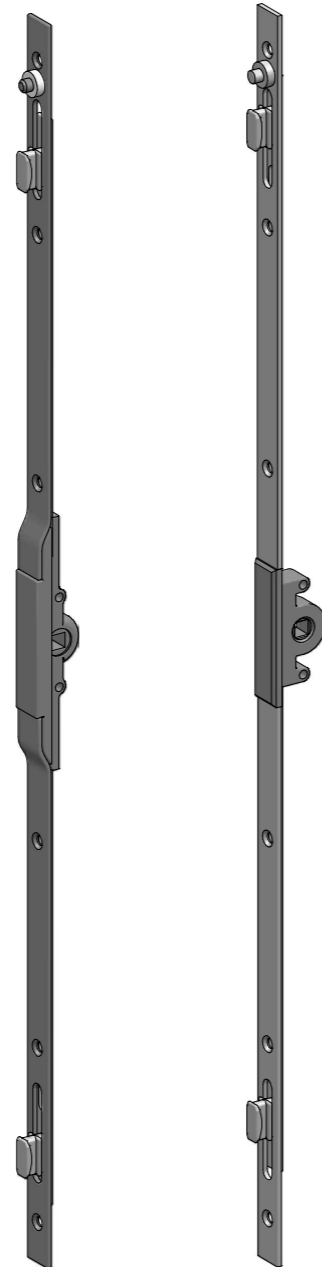
- A000 3746.1 mult (2 pto) long 600
- A000 3747.1 mult (2 pto) long 1000
- A000 3748.1 mult (3 pto) long 1800

Cierres multipuntos
(tradicionales E 15)

- A000 37464 mult (2 pto) long 600
- A000 37474 mult (2 pto) long 1000
- A000 37484 mult (3 pto) long 1800

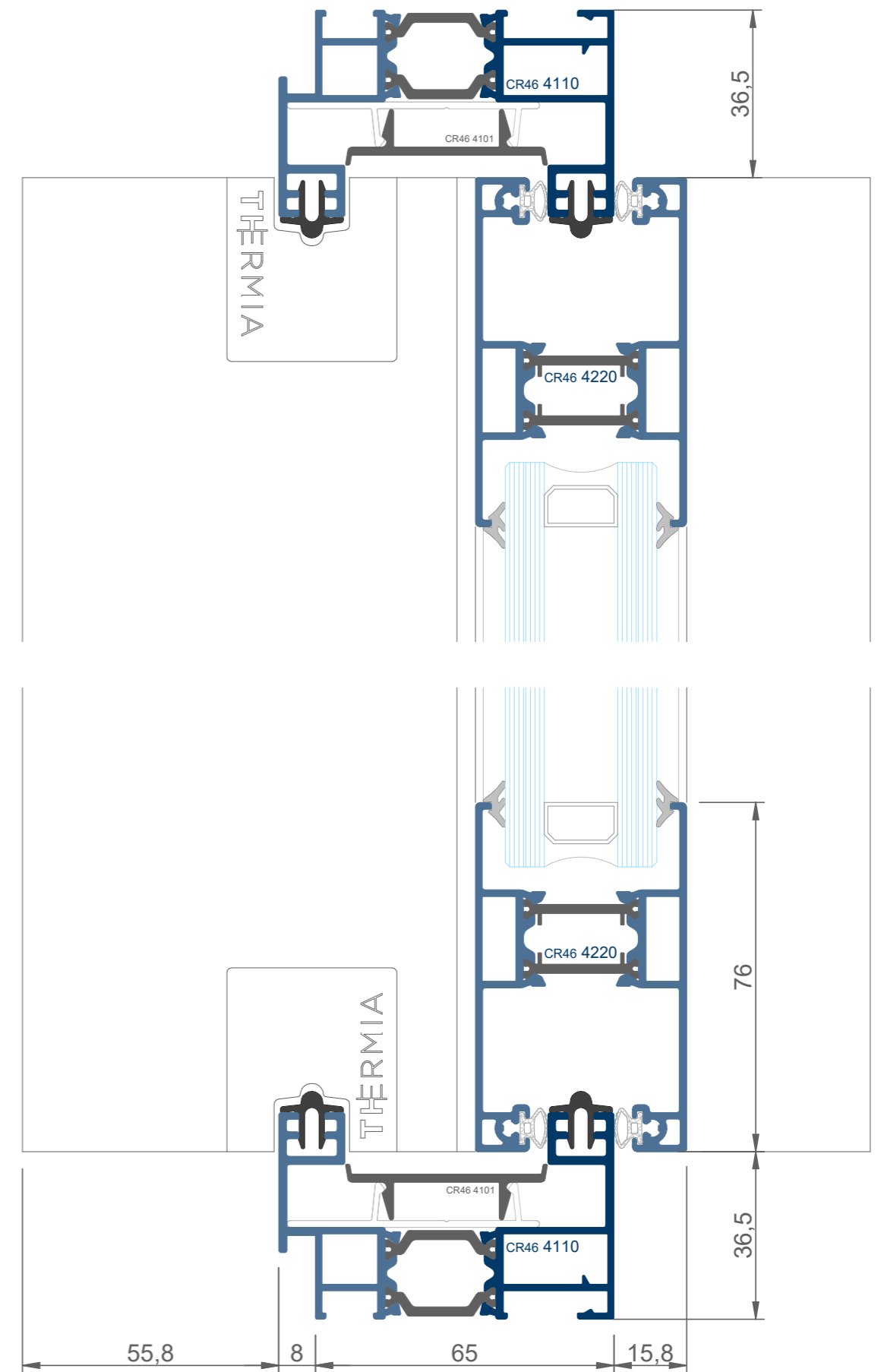
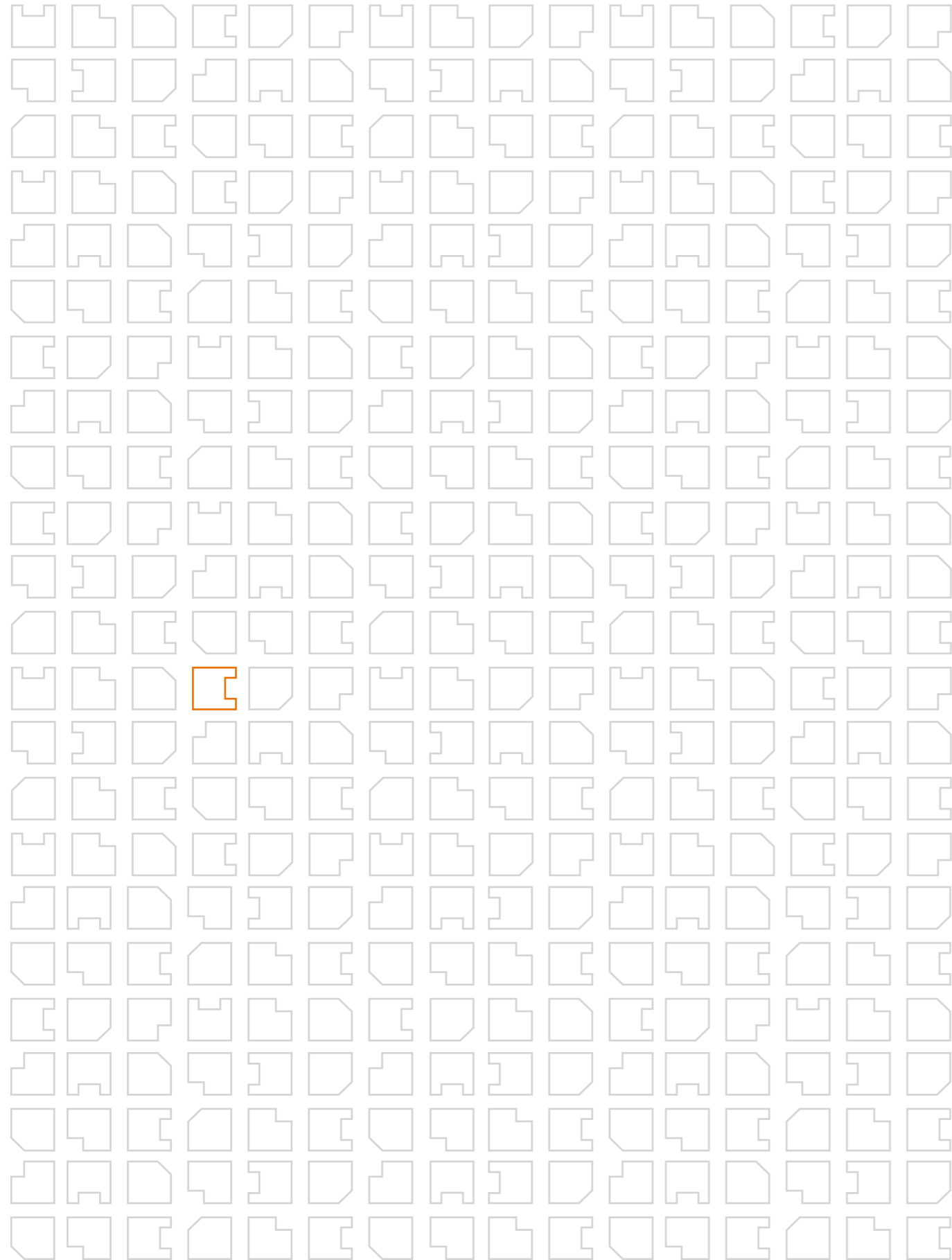
Cierres multipuntos
(tradicionales INOX)

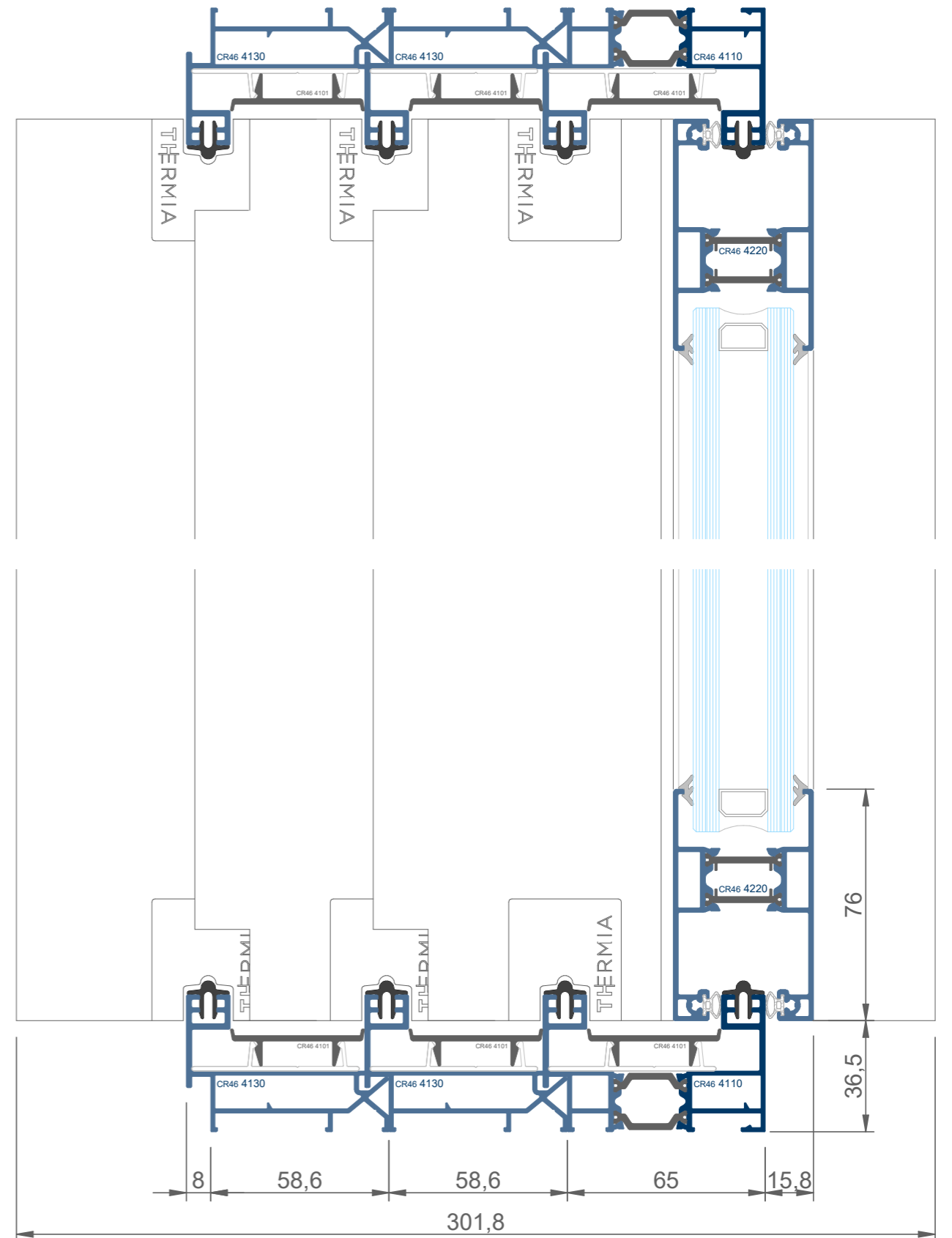
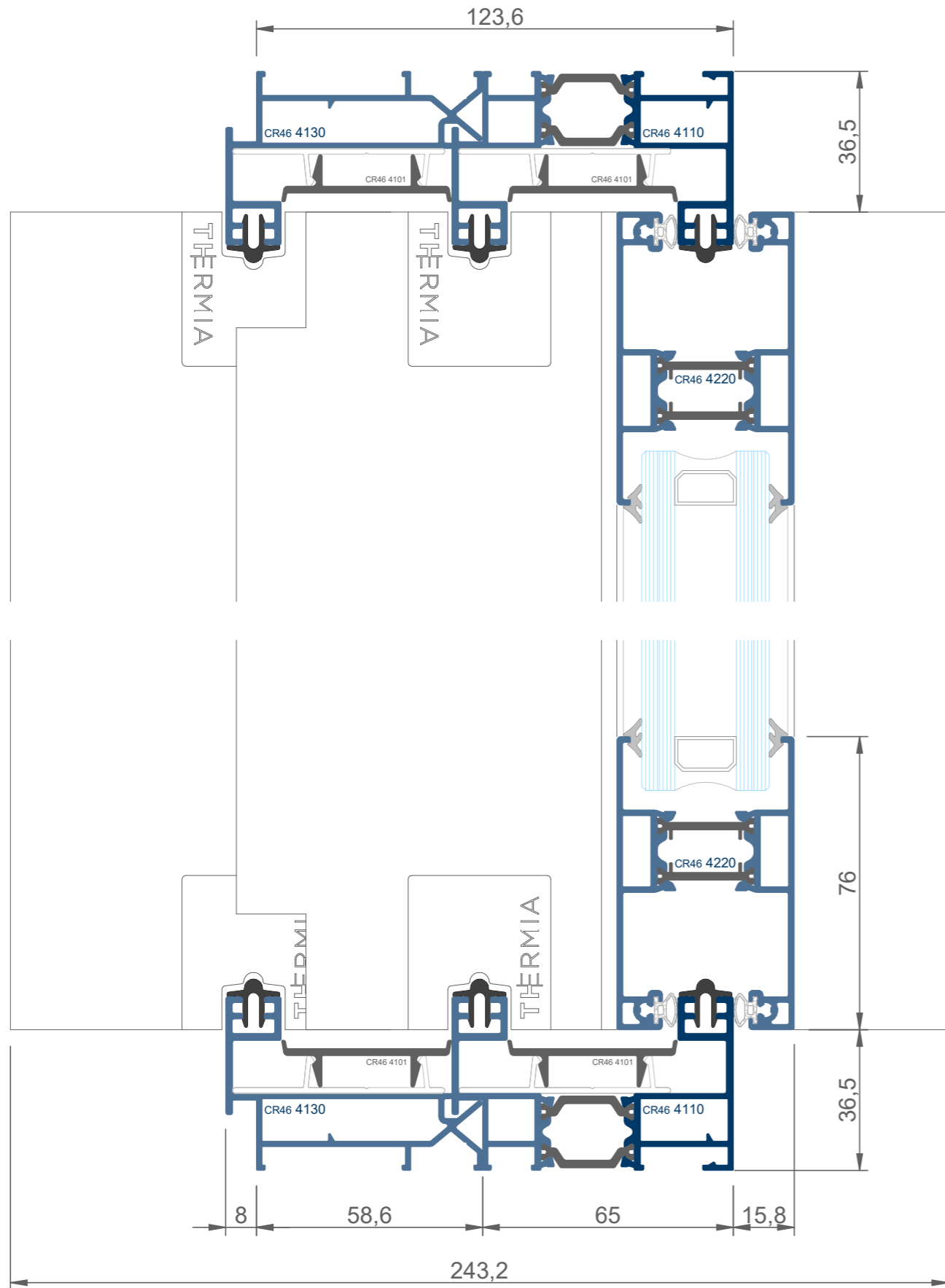
- A000 37450X mult (1 pto) long 270
- A000 37460X mult (2 pto) long 600
- A000 37470X mult (2 pto) long 1000
- A000 37480X mult (3 pto) long 1800

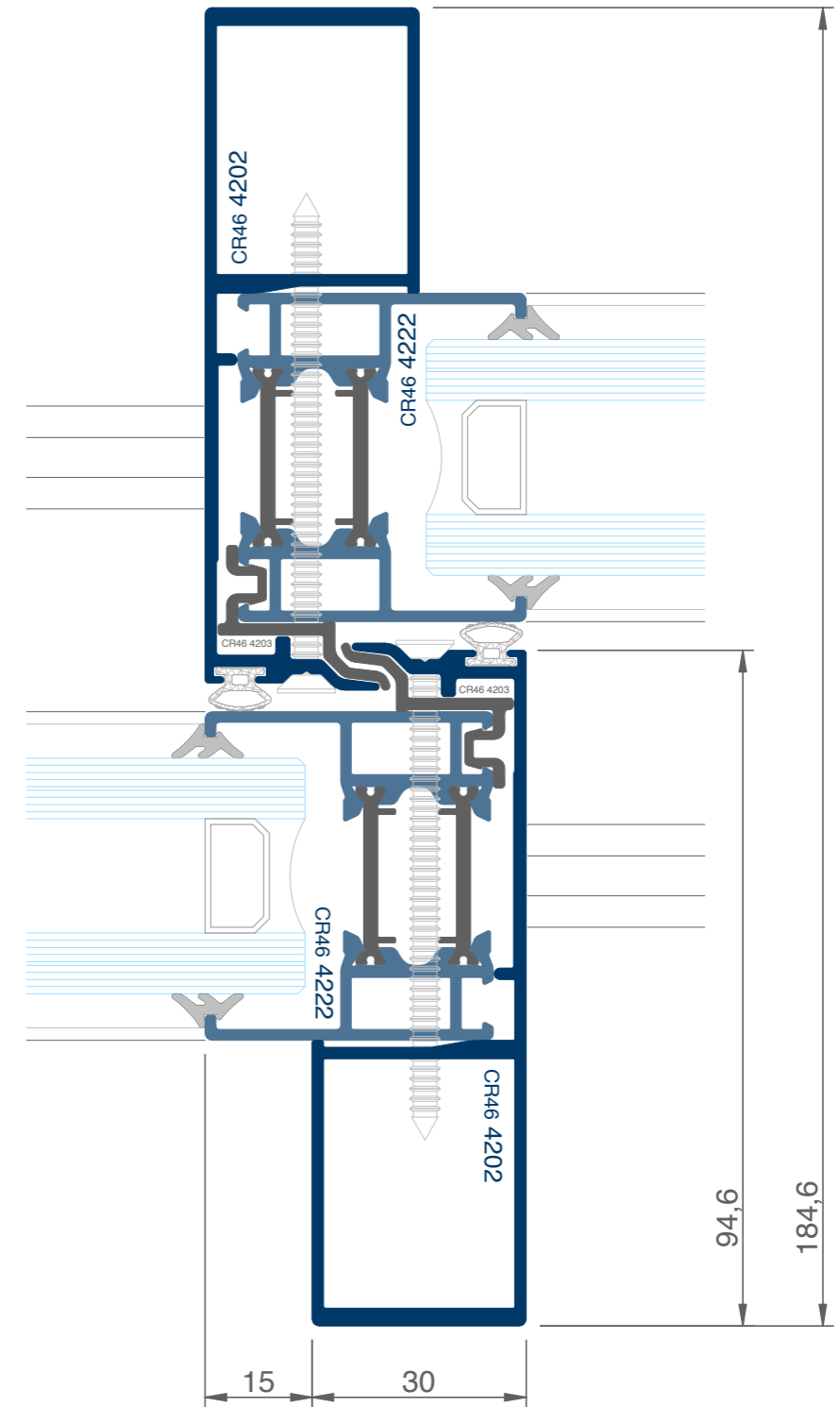
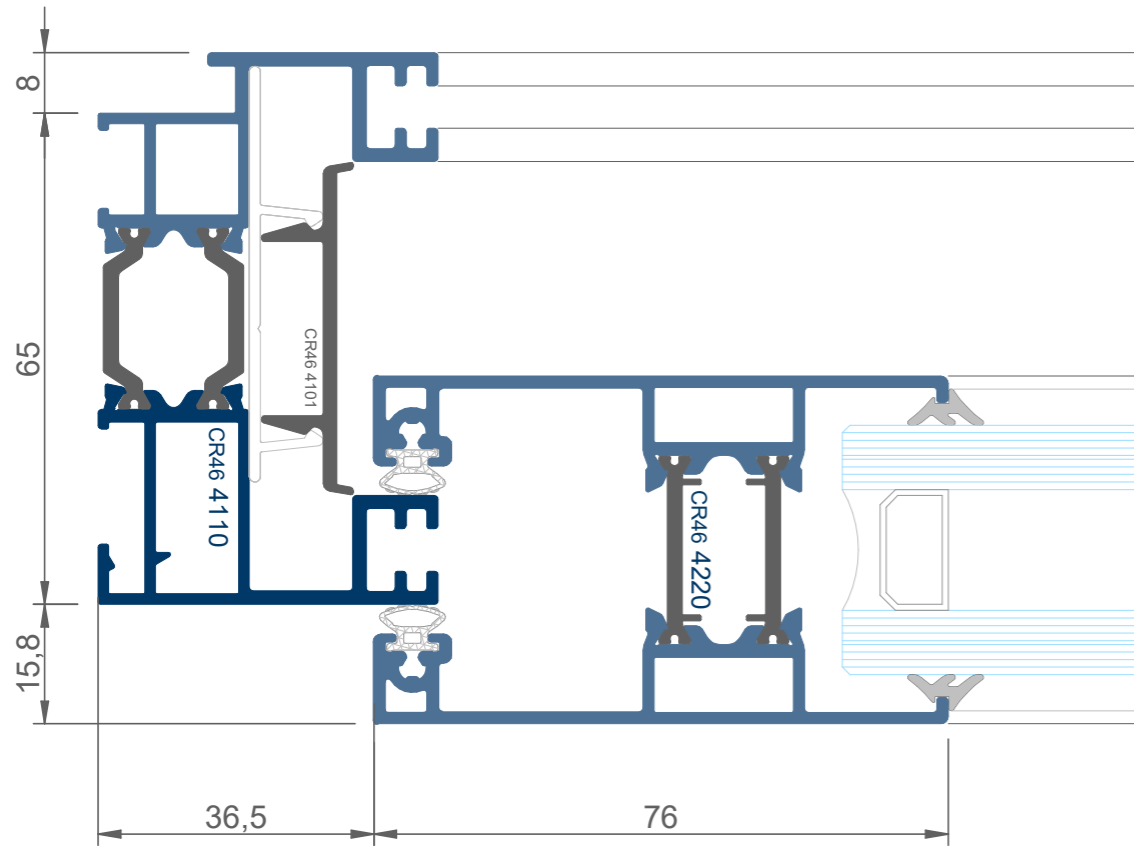


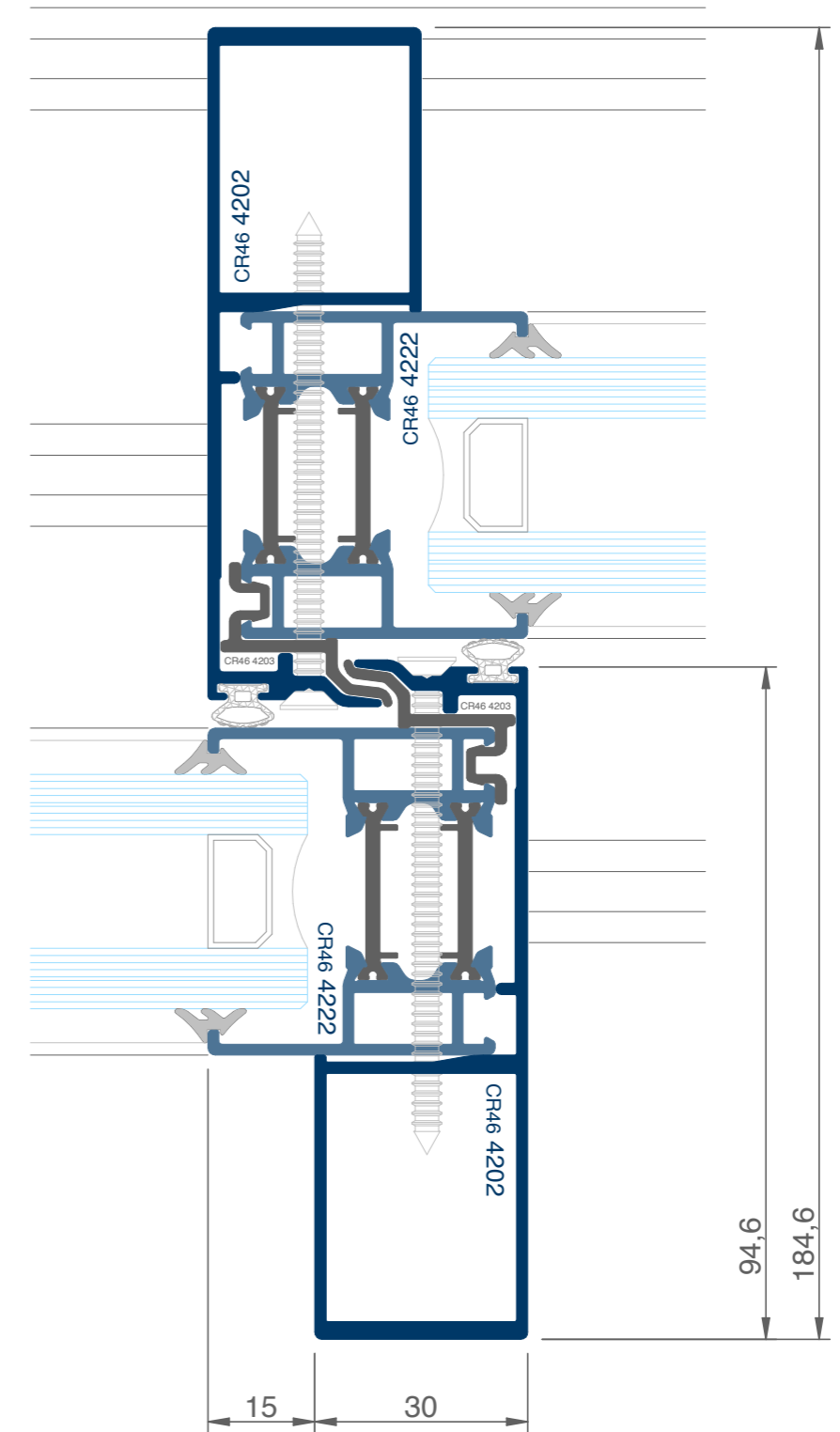
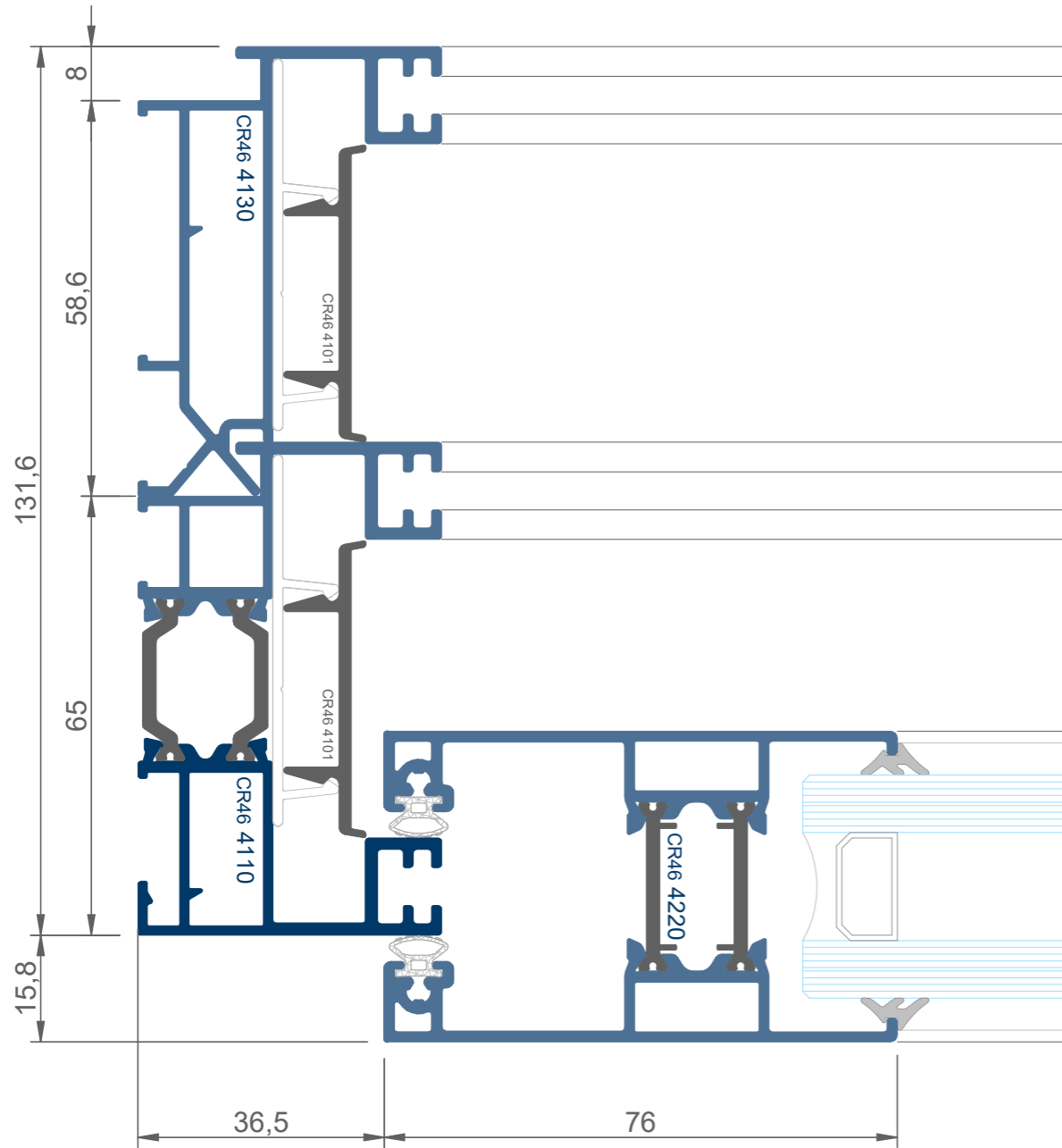
Mecanizado hoja

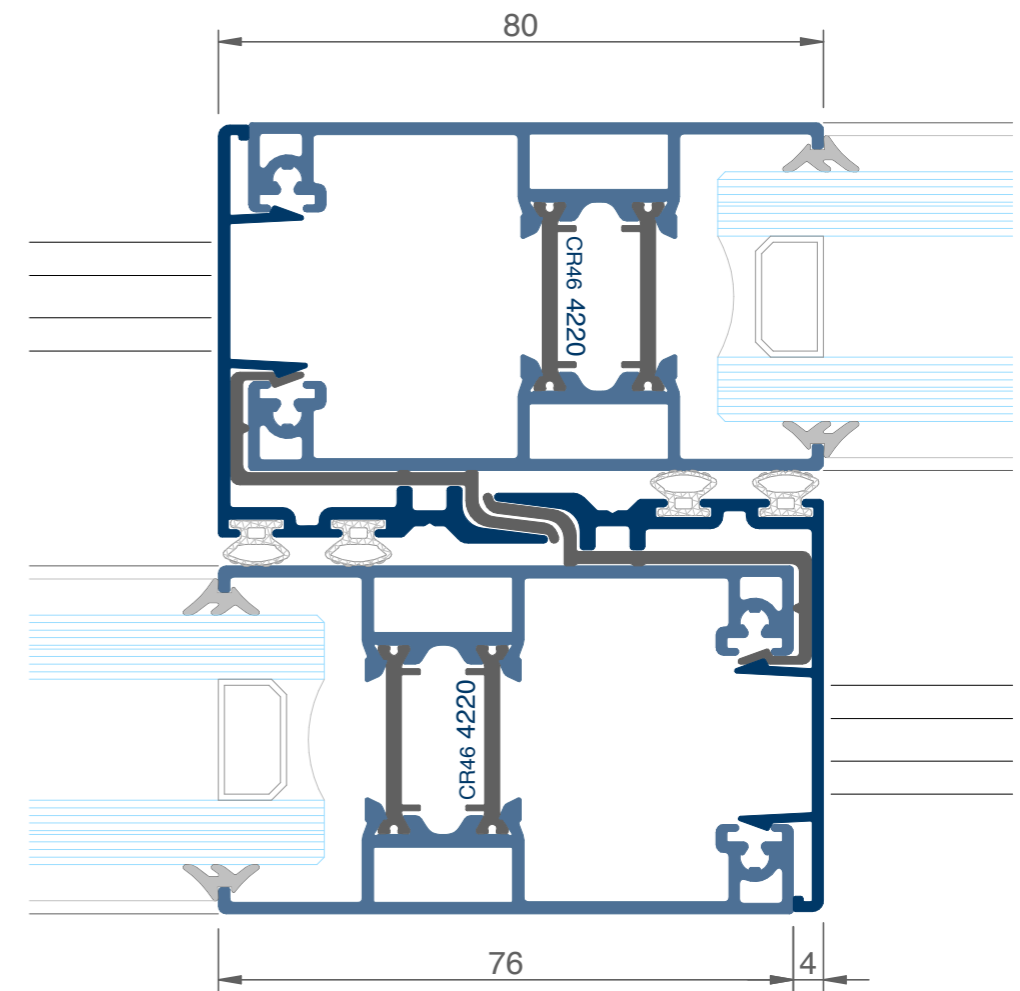
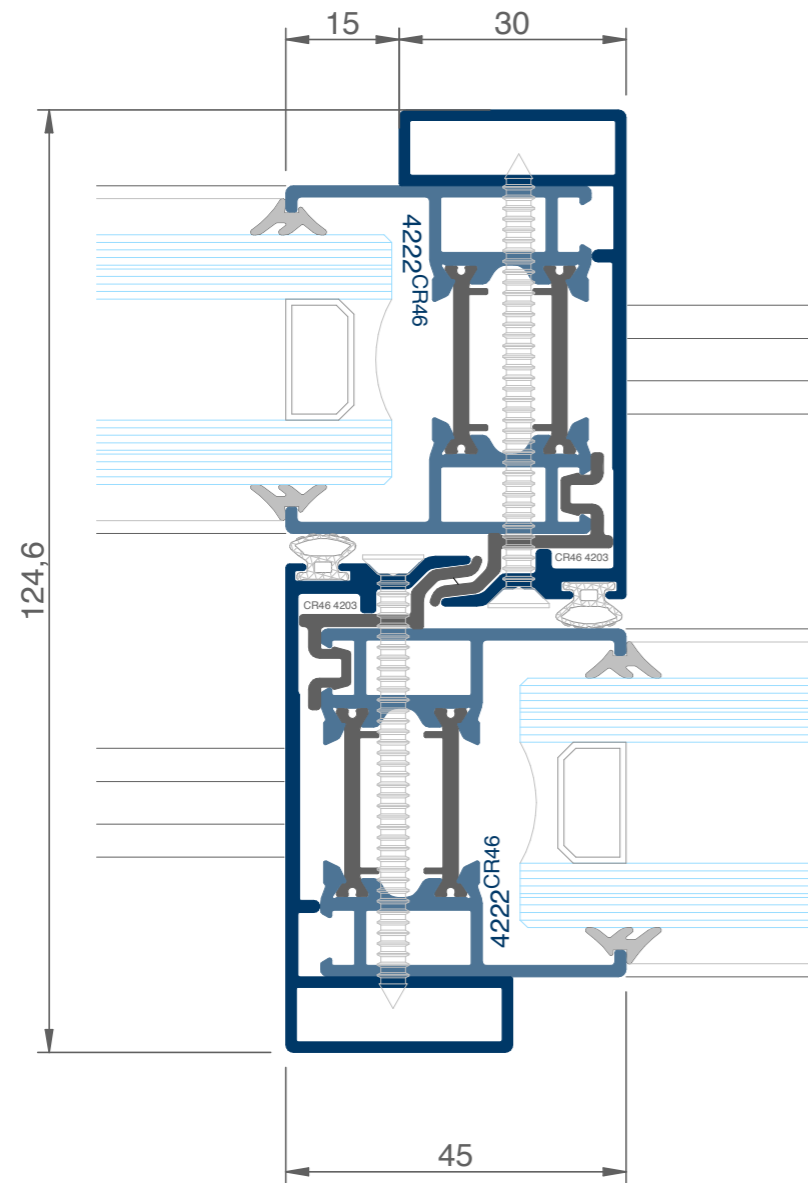
Tabla de aplicación			
alt minima corred	1000	1400	2200
herraje entrada 7,5	A000 3746	A000 3747	A000 3748
herraje entrada 15	A000 37464	A000 37474	A000 37484
puntos de cierre	2	2	3
perfil apoyo herraje	CR46 3749	CR46 3749	CR46 3749

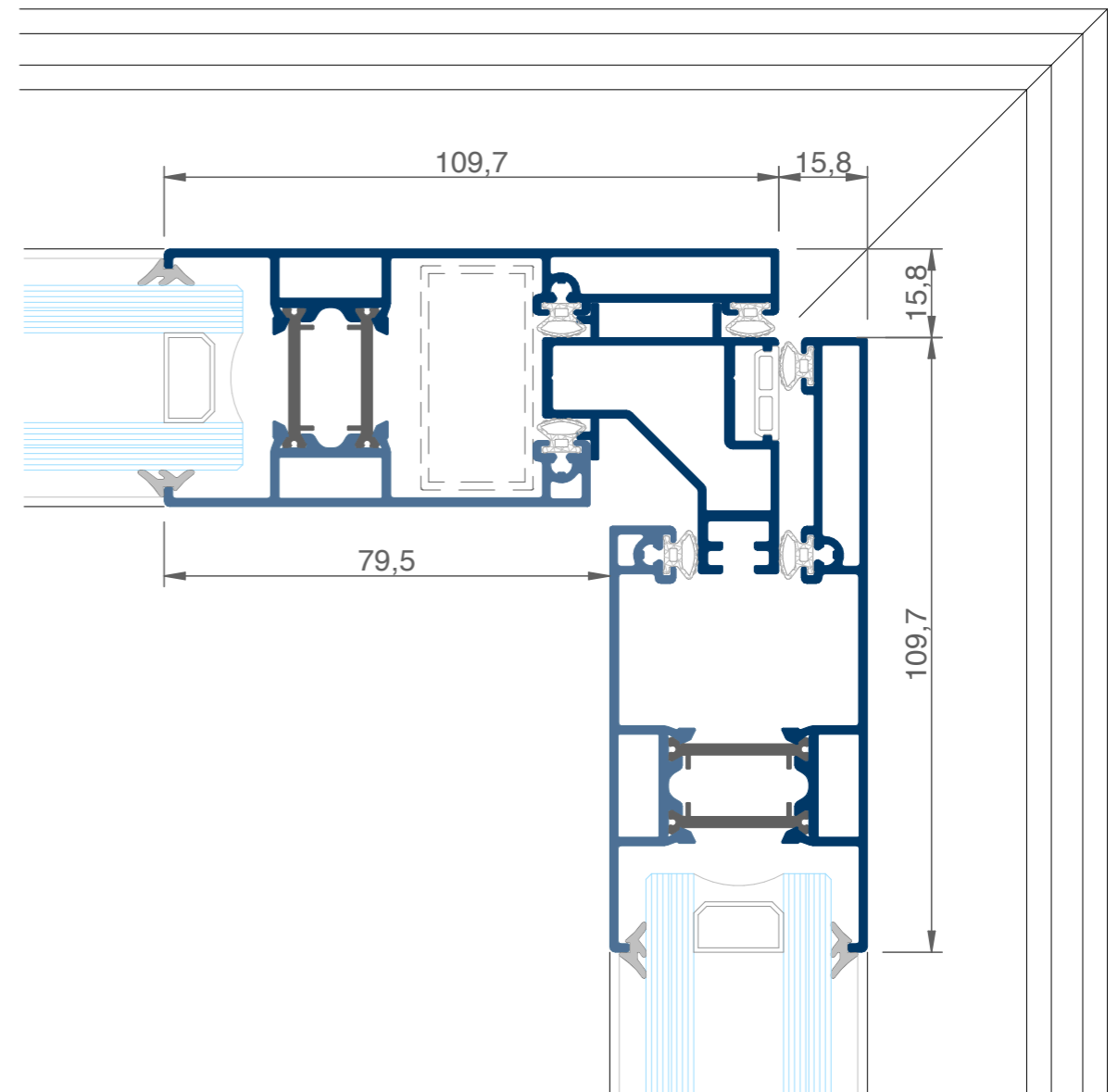
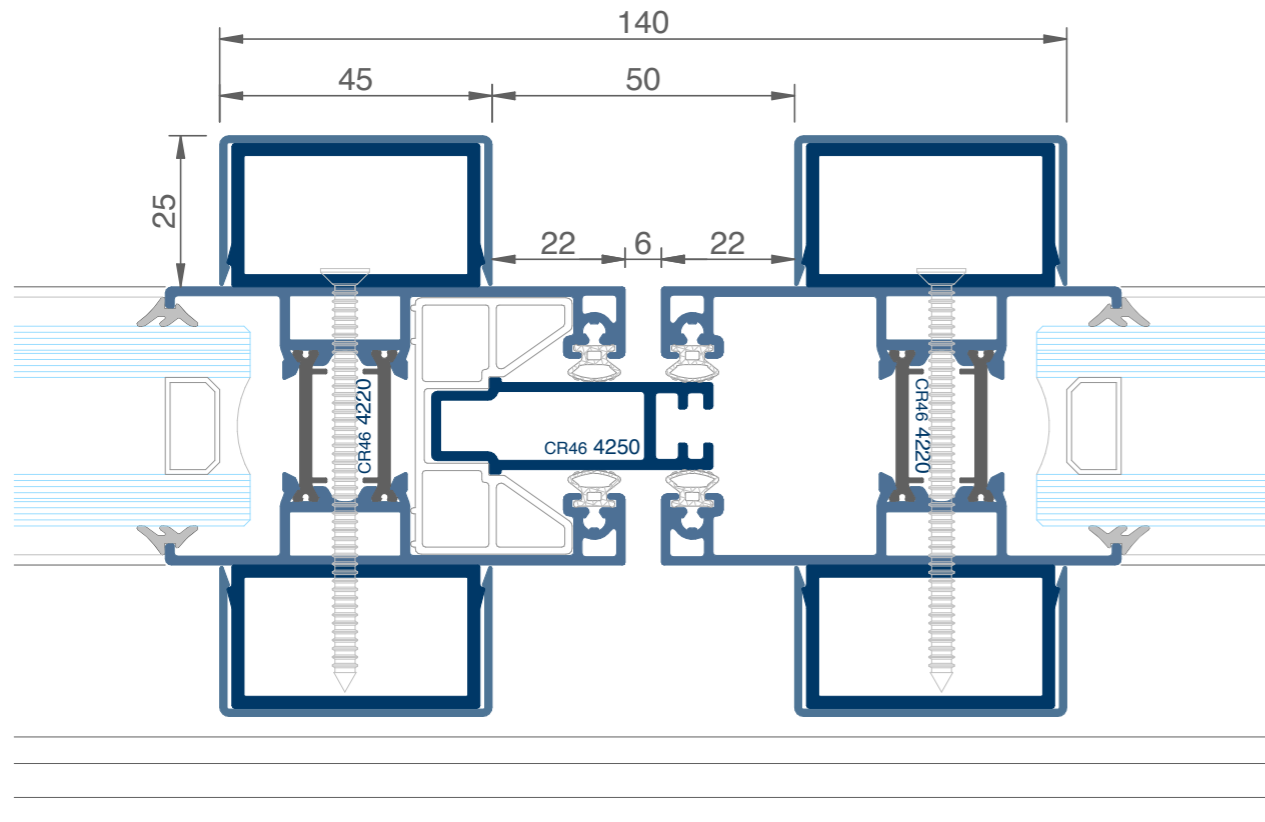


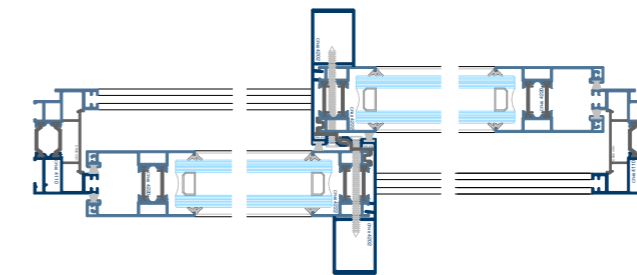
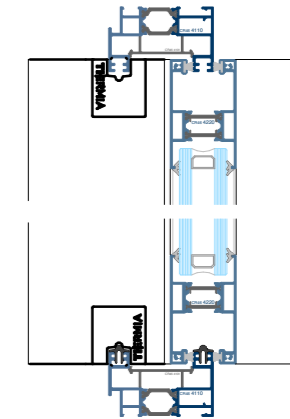
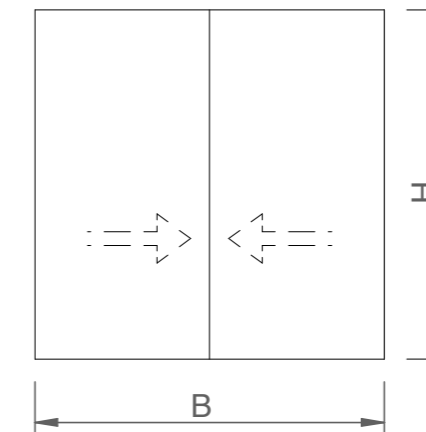
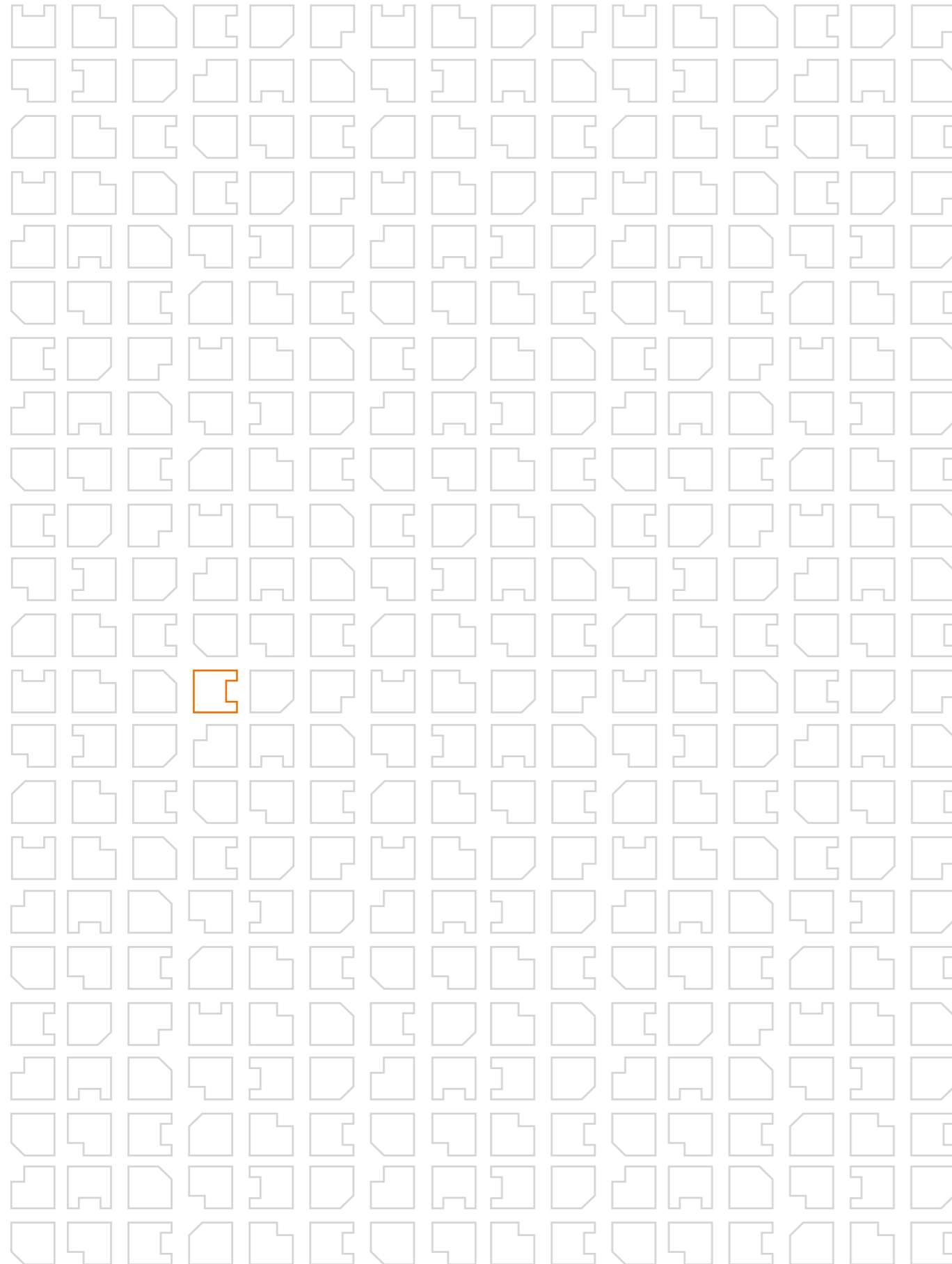








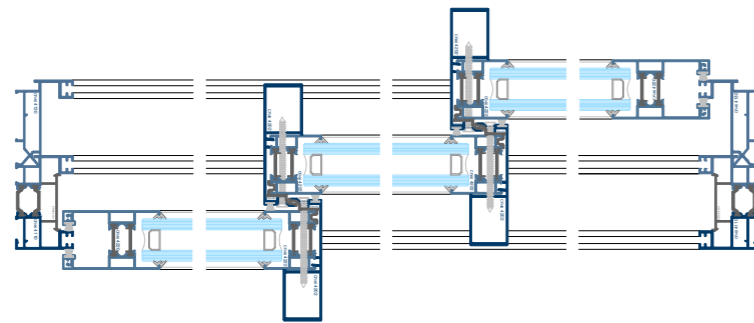
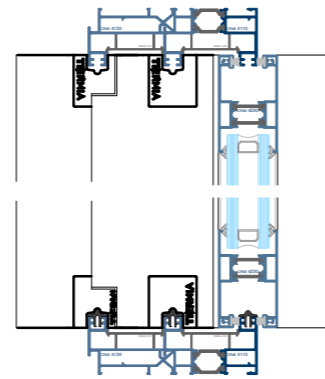
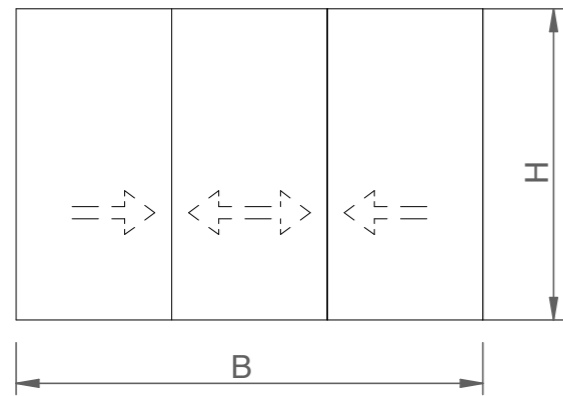




FORMULAS DE CORTE				
	UDS	FORMULA	FORMA	
marco horizontal	CR46.4110	2	B	\---/
marco vertical	CR46.4110	2	H	\---/
cubierta marco horizontal	CR46.4101	2	B-40	\---/
cubierta marco vertical	CR46.4101	4	H-40	\---/
rail de rodadura	CR46.4100	4	B-90	---
hoja horizontal	CR46.4220	4	(B+34)/2	\---/*
hoja vertical	CR46.4220	2	H-73	\---/
hoja vertical	CR46.4222	2	H-144	\---/
perfil cruce aluminio	CR46.4202	2	H-73	---
perfil cruce termico	CR46.4203	2	H-73	---
perfil U 10x15x10	10x15x10	2	H-273	---
vidrio	2	(B-214)/2 x H-197		

* ver mecanizado pag. G 01

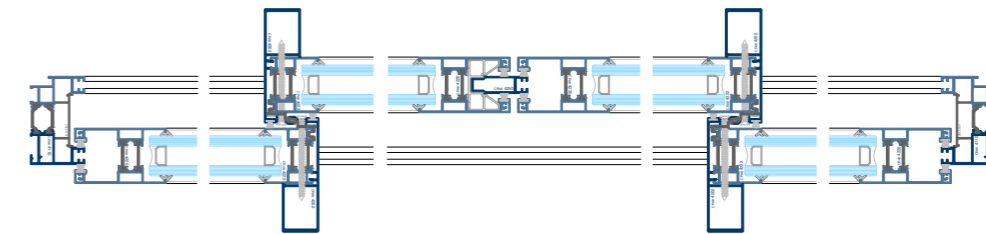
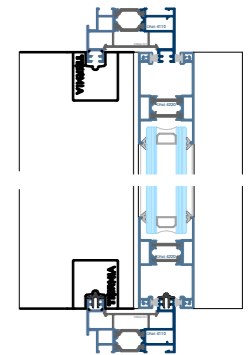
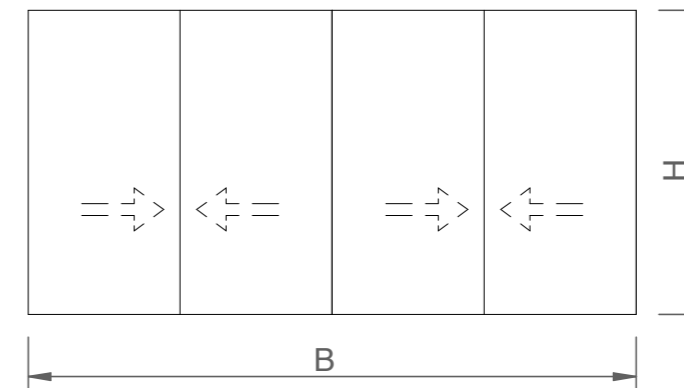
ACCESORIOS		
		UDS
escuadra interior marco	A000.2110	4
escuadra exterior marco	AR52.2118	4
escuadra hoja	A000.2110	8
escuadra alineacion hoja	CR46.2144	8
junta estanquidad	A000.2370	4B+6H
junta ranura marco	CR46.2301	2B+4H
tope final de carrera	CR46.2312	4
pieza terminal cruce	CR46.2319	4
pieza base para CR462319	CR46.2311	4
clip cubrecarril para CR464101	C040.4105	2((L/500)+2) 2(H/500)
cortavientos	CR46.2317	2
tapa perfil CR464202	CR46.2302	4
tornillo union hoja	DIN 7982 2,9x19	8
ruedas tandem regulables	CR46.3786	4
cierre (según modelo)	ver D04 a D06	2



FORMULAS DE CORTE				
		UDS	FORMULA	FORMA
marco horizontal	CR46.4110	2	B	\\-/-
marco vertical	CR46.4110	2	H	\\-/-
marco horizontal adicional	CR46.4130	2	B	\\-/-
marco vertical adicional	CR46.4130	2	H	\\-/-
cubierta marco horizontal	CR46.4101	2	B-40	\\-/-
cubierta marco vertical	CR46.4101	2	H-40	\\-/-
rail de rodadura	CR46.4100	6	B-90	---
hoja horizontal	CR46.4220	6	$(B+141)/3$	\\-/*
hoja vertical	CR46.4220	2	H-73	\\-/-
hoja vertical	CR46.4222	4	H-144	\\-/-
perfil cruce aluminio	CR46.4202	4	H-73	---
perfil cruce termico	CR46.4203	4	H-73	---
perfil U 10x15x10	10x15x10	2	H-273	---
vidrio	3		$(B-231)/3 \times H-197$	

* ver mecanizado pag. G 01

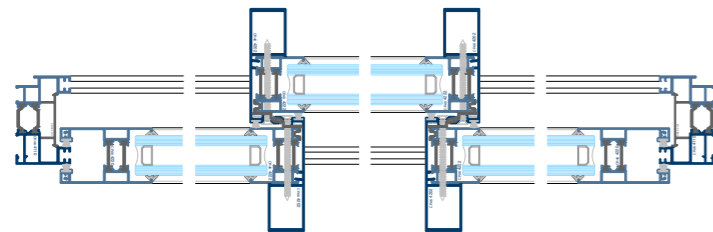
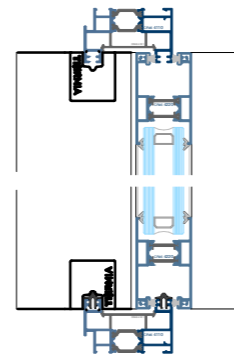
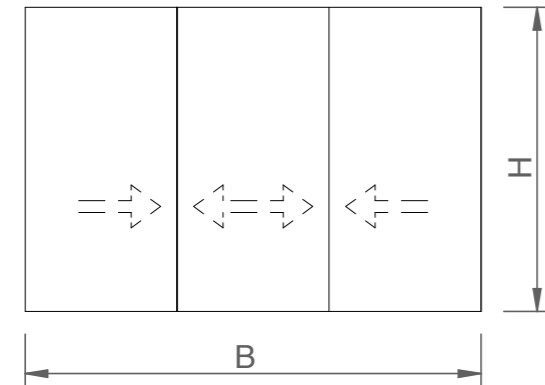
ACCESORIOS		
		UDS
escuadra interior marco	A000.2110	8
escuadra exterior marco	AR52.2118	4
escuadra hoja	A000.2110	12
escuadra alineacion hoja	CR46.2144	8
junta estanquidad	A000.2370	6B+8H
junta ranura marco	CR46.2301	3B+6H
tope final de carrera	CR46.2312	4
pieza terminal cruce	CR46.2319	8
pieza base para CR462319	CR46.2311	8
clip cubrecarril para CR464101	C040.4105	$2((L/500)+2)$ $2(H/500)$
cortavientos	CR46.2317	4
tapa perfil CR464202	CR46.2302	4
tapa perfil CR464202 (multicarril)	CR46.2304	4
tornillo union hoja	DIN 7982 2,9x19	8
ruedas tandem regulables	CR46.3786	6
cierre (según modelo)	ver D04 a D06	2



FORMULAS DE CORTE				
		UDS	FORMULA	FORMA
marco horizontal	CR46.4110	2	B	\\-/-
marco vertical	CR46.4110	2	H	\\-/-
cubierta marco horizontal	CR46.4101	2	B-40	\\-/-
cubierta marco vertical	CR46.4101	2	H-40	\\-/-
rail de rodadura	CR46.4100	4	B-90	---
hoja horizontal	CR46.4220	8	$(B+135)/4$	\\-/*
hoja vertical	CR46.4220	4	H-73	\\-/-
hoja vertical	CR46.4222	4	H-144	\\-/-
perfil tres cuatro hojas	CR46.4250	1	H-173	---
perfil cruce aluminio	CR46.4202	4	H-73	---
perfil cruce termico	CR46.4203	4	H-73	---
perfil U 10x15x10	10x15x10	3	H-273	---
vidrio	4		$(B-361)/4 \times H-197$	

* ver mecanizado pag. G 01

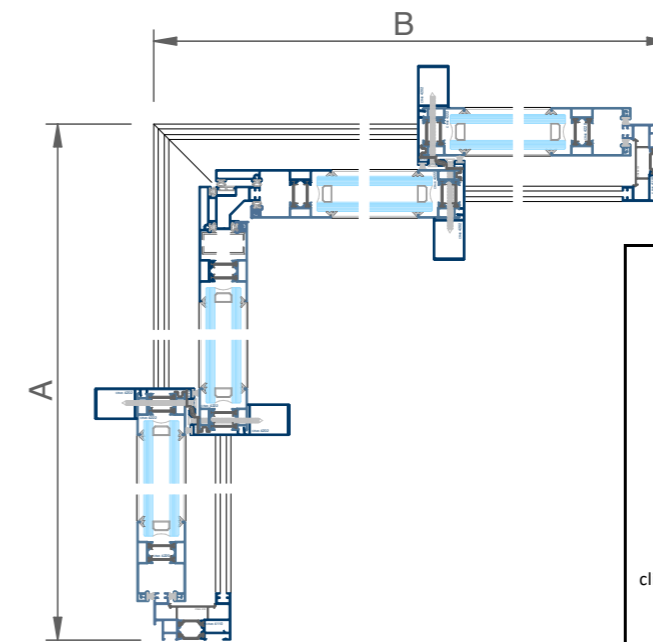
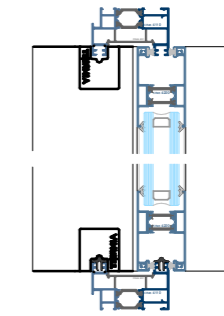
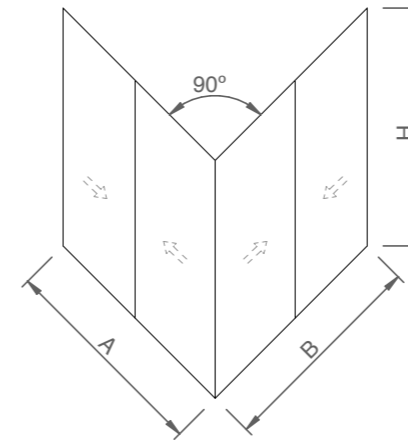
ACCESORIOS		
		UDS
escuadra interior marco	A000.2110	4
escuadra exterior marco	AR52.2118	4
escuadra hoja	A000.2110	16
escuadra alineacion hoja	CR46.2144	16
junta estanquidad	A000.2370	4B+12H
junta ranura marco	CR46.2301	2B+4H
tope final de carrera	CR46.2312	8
pieza terminal cruce	CR46.2319	8
pieza base para CR462319	CR46.2311	8
clip cubrecarril para CR464101	C040.4105	$2((L/500)+2)$ $2(H/500)$
cortavientos	CR46.2317	4
tapa perfil CR464202	CR46.2302	8
pieza terminal 3-4 hojas	CR46.2350	2
tornillo union hoja	DIN 7982 2,9x19	16
ruedas tandem regulables	CR46.3786	8
cierre (según modelo)	ver D04 a D06	3



FORMULAS DE CORTE				
		UDS	FORMULA	FORMA
marco horizontal	CR46.4110	2	B	\---/
marco vertical	CR46.4110	2	H	\---/
cubierta marco horizontal	CR46.4101	2	B-40	\---/
cubierta marco vertical	CR46.4101	2	H-40	\---/
rail de rodadura	CR46.4100	4	B-90	---
hoja horizontal	CR46.4220	6	$(B+141)/3$	\---/*
hoja vertical	CR46.4220	2	H-73	\---/
hoja vertical	CR46.4222	4	H-144	\---/
perfil cruce aluminio	CR46.4202	4	H-73	---
perfil cruce termico	CR46.4203	4	H-73	---
perfil U 10x15x10	10x15x10	3	H-273	---
vidrio		4	$(B-231)/3 \times H-197$	

* ver mecanizado pag. G 01

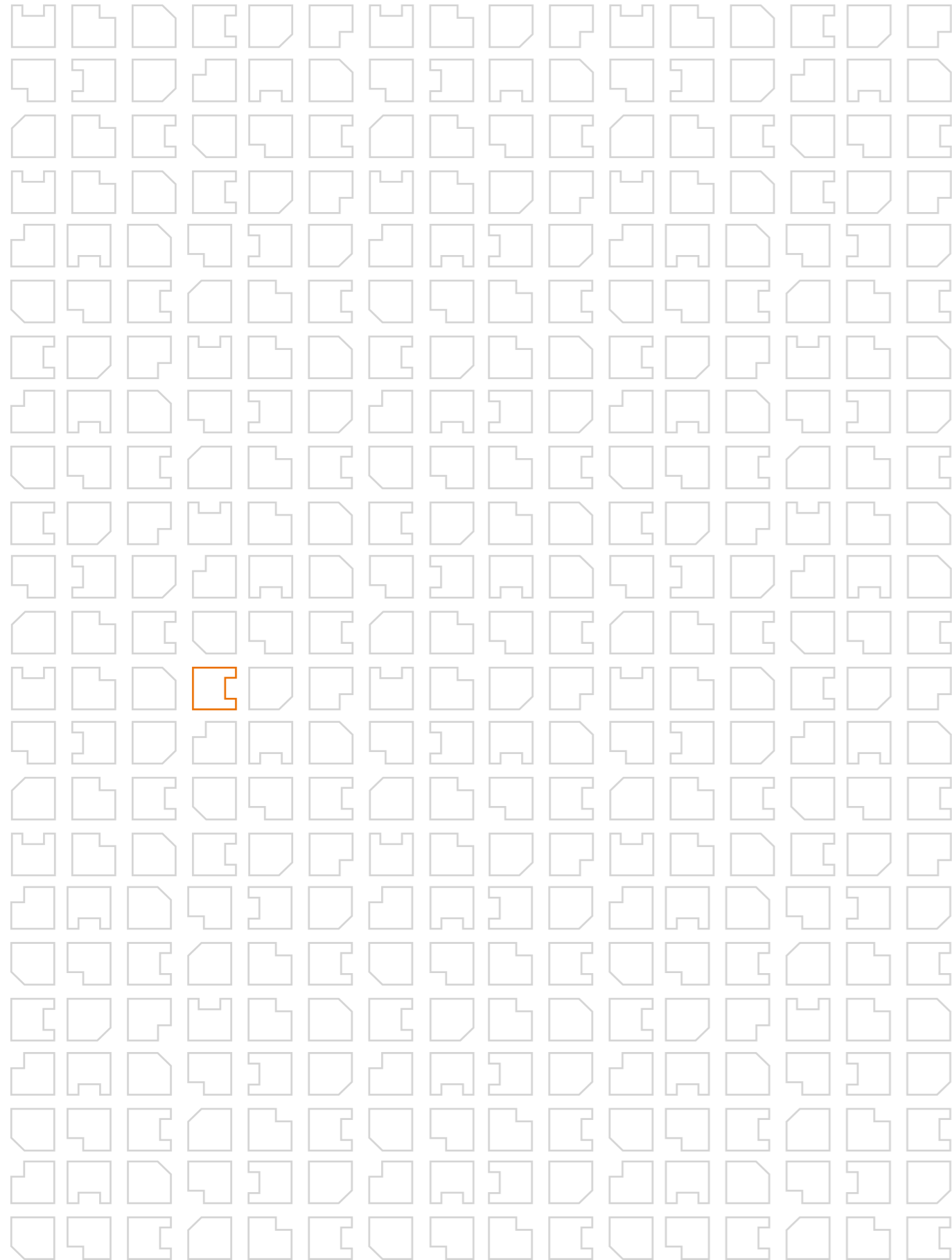
ACCESORIOS		
		UDS
escuadra interior marco	A000.2110	4
escuadra exterior marco	AR52.2118	4
escuadra hoja	A000.2110	12
escuadra alineacion hoja	CR46.2144	8
junta estanquidad	A000.2370	4B+8H
junta ranura marco	CR46.2301	2B+4H
tope final de carrera	CR46.2312	4
pieza terminal cruce	CR46.2319	8
pieza base para CR462319	CR46.2311	8
clip cubrecarril para CR464101	C040.4105	$2((L/500)+2)$ $2(H/500)$
cortavientos	CR46.2317	4
tapa perfil CR464202	CR46.2302	8
tornillo union hoja	DIN 7982 2,9x19	8
ruedas tandem regulables	CR46.3786	6
cierre (según modelo)	ver D04 a D06	2



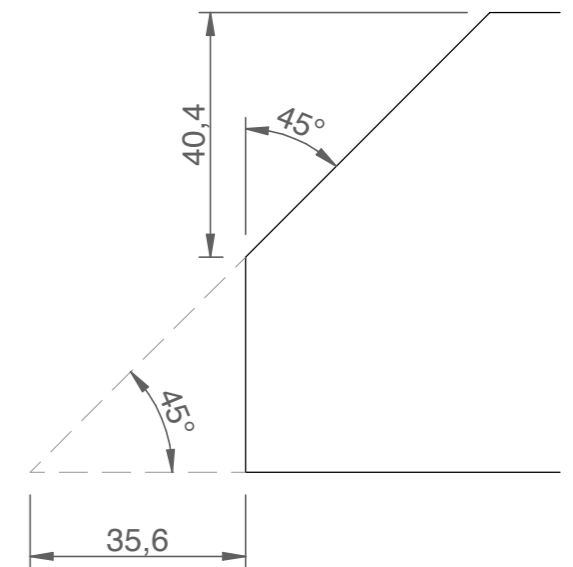
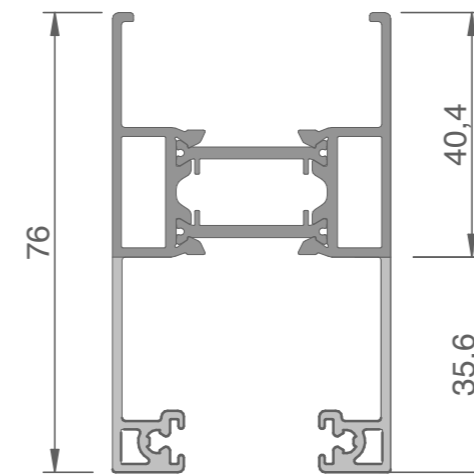
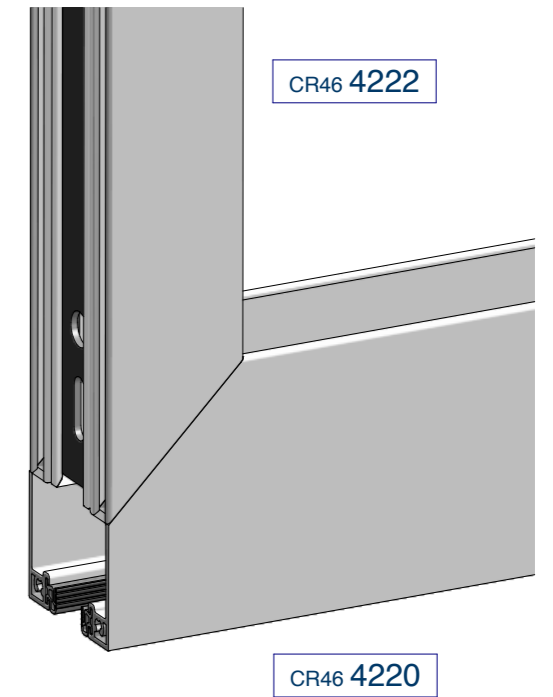
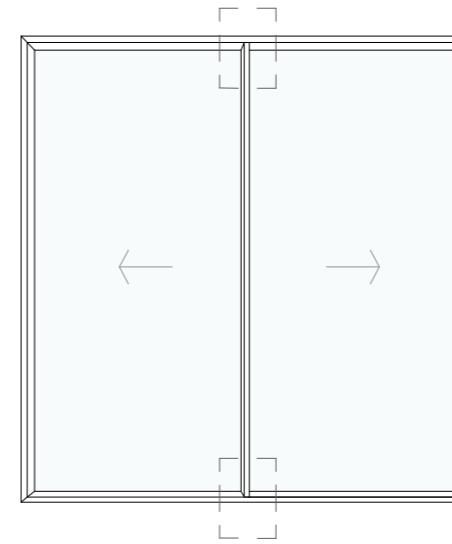
ACCESORIOS		
		UDS
escuadra interior marco	A000.2110	4
escuadra exterior marco	AR52.2118	4
escuadra interior kiss marco	A00K.2110	2
escuadra exterior kiss marco	A00K.2112	2
escuadra hoja	A000.2110	16
escuadra alineacion hoja	A000.2144	16
junta estanquidad	A000.2370	4(A+B)+14H
junta ranura marco	CR46.2301	2(A+B)+4H
tope final de carrera	CR46.2312	4
pieza terminal cruce	CR46.2319	8
pieza base para CR462319	CR46.2311	8
clip cubrecarril para CR464101	C040.4105	$2(((A+B)/500)+2)$ $2(H/500)$
cortavientos	CR46.2317	4
tapa perfil CR464202	CR46.2302	4
pieza terminal kiss inferior	CR46.2351	1
pieza terminal kiss superior	CR46.2352	1
tornillo union hoja	DIN 7982 2,9x19	16
ruedas tandem regulables	CR46.3786	8
cierre (según modelo)	ver D04 a D06	3

zona A				
ref	cant	formula	forma	medidas de corte
CR464110	2	A	\-G--/	girar perfil al cortar
CR464110	1	H	\---/	
CR464100	2	A-46	---/	ajustar al marco
CR464100	2	A-120	---/	ajustar al marco
CR464101	1	H-66	---	
CR464101	2	A	---/	ajustar al marco
CR464220	4	$(A-22)/2$	\---/	ver mecanizado
CR464220	1	H-73	---	
CR464222	2	H-144	---	
CR464202	2	H-73	---	
CR464203	2	H-73	---	
C0404254	1	H-5	\---/	ver mecanizado
CR464251	1	H-173	---	
TUBO 40X20	1	H-173	---	
vidrio	2	$(A-270)/2 \times H-197$		

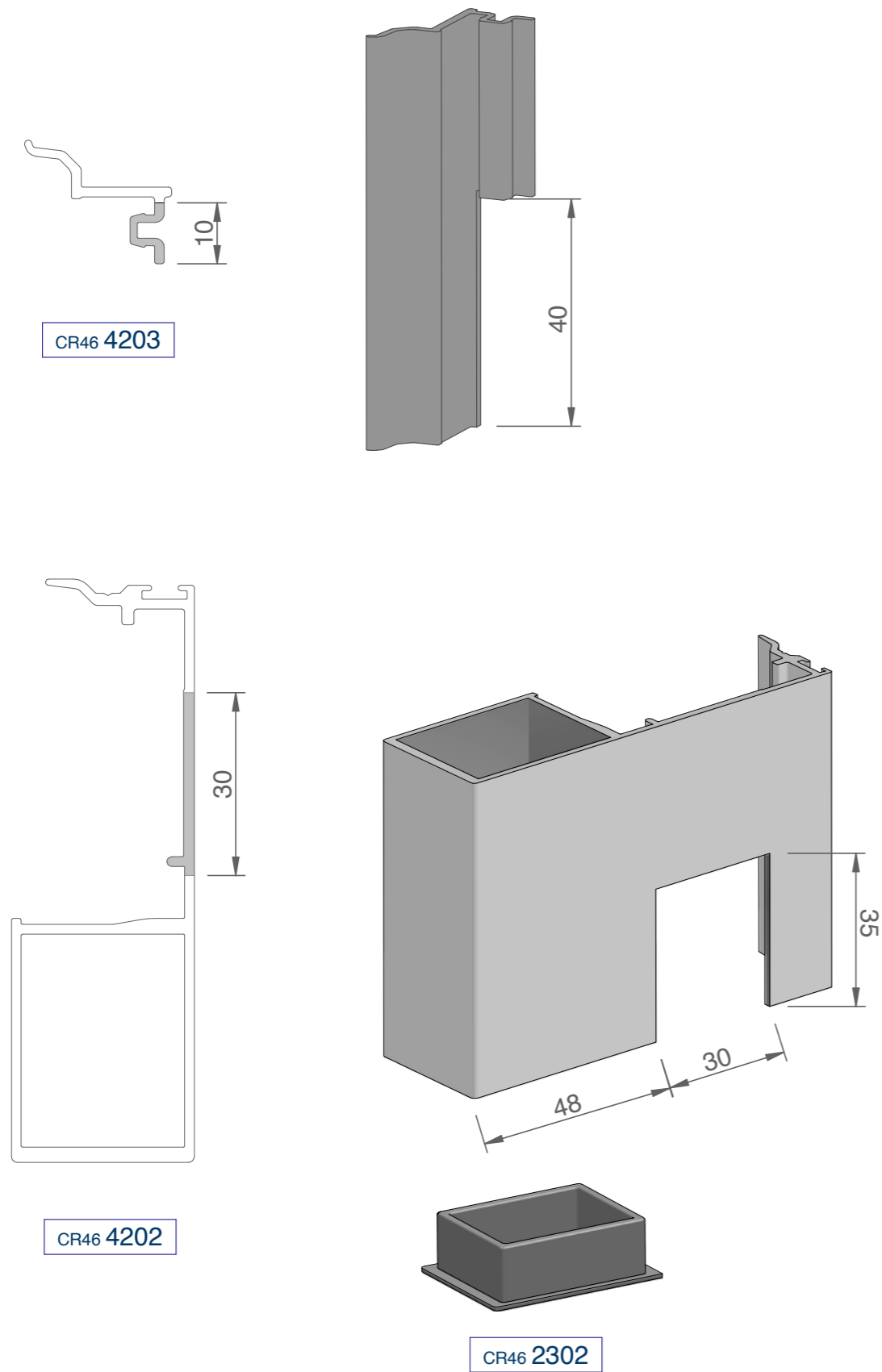
zona B				
ref	cant	formula	forma	medidas de corte
CR464110	2	B	\-G--/	girar perfil al cortar
CR464110	1	H	\---/	
CR464100	2	B-46	---/	ajustar al marco
CR464100	2	B-120	---/	ajustar al marco
CR464101	1	H-66	---	
CR464101	2	B	---/	ajustar al marco
CR464220	4	$(B-22)/2$	\---/	ver mecanizado
CR464220	1	H-73	---	
CR464222	2	H-144	---	
CR464202	2	H-73	---	
CR464203	2	H-73	---	
C0404254	1	H-5	\---/	ver mecanizado
vidrio	2	$(B-270)/2 \times H-197$		



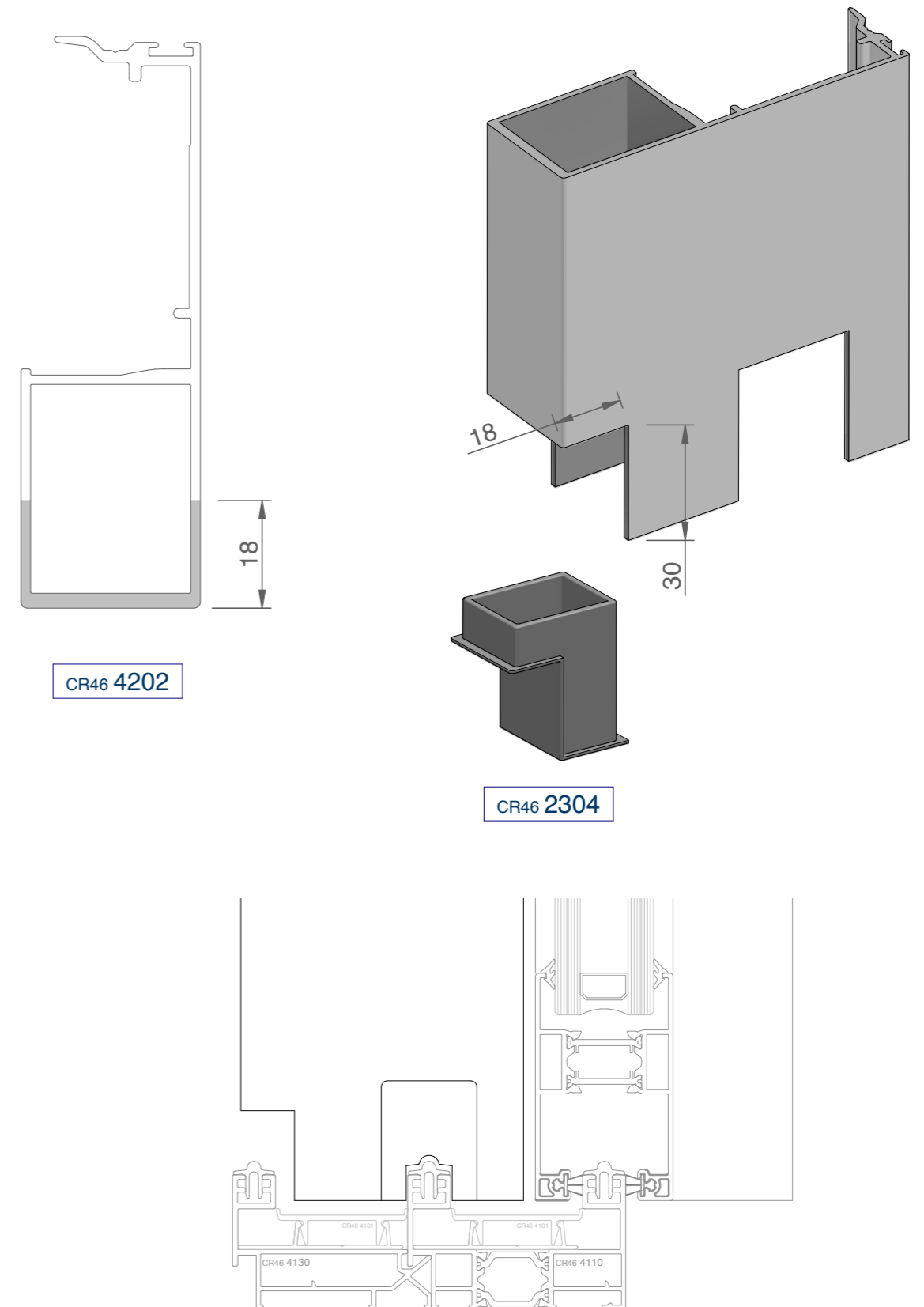
Unión hojas centrales



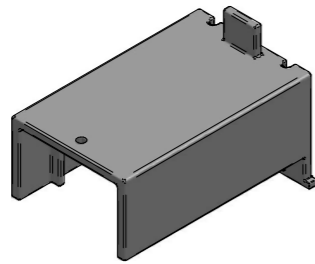
Mecanizado cruce central



Mecanizado cruce central (multicarril)

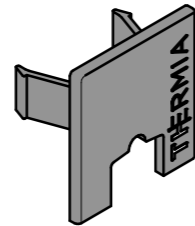


Pieza terminal cruce



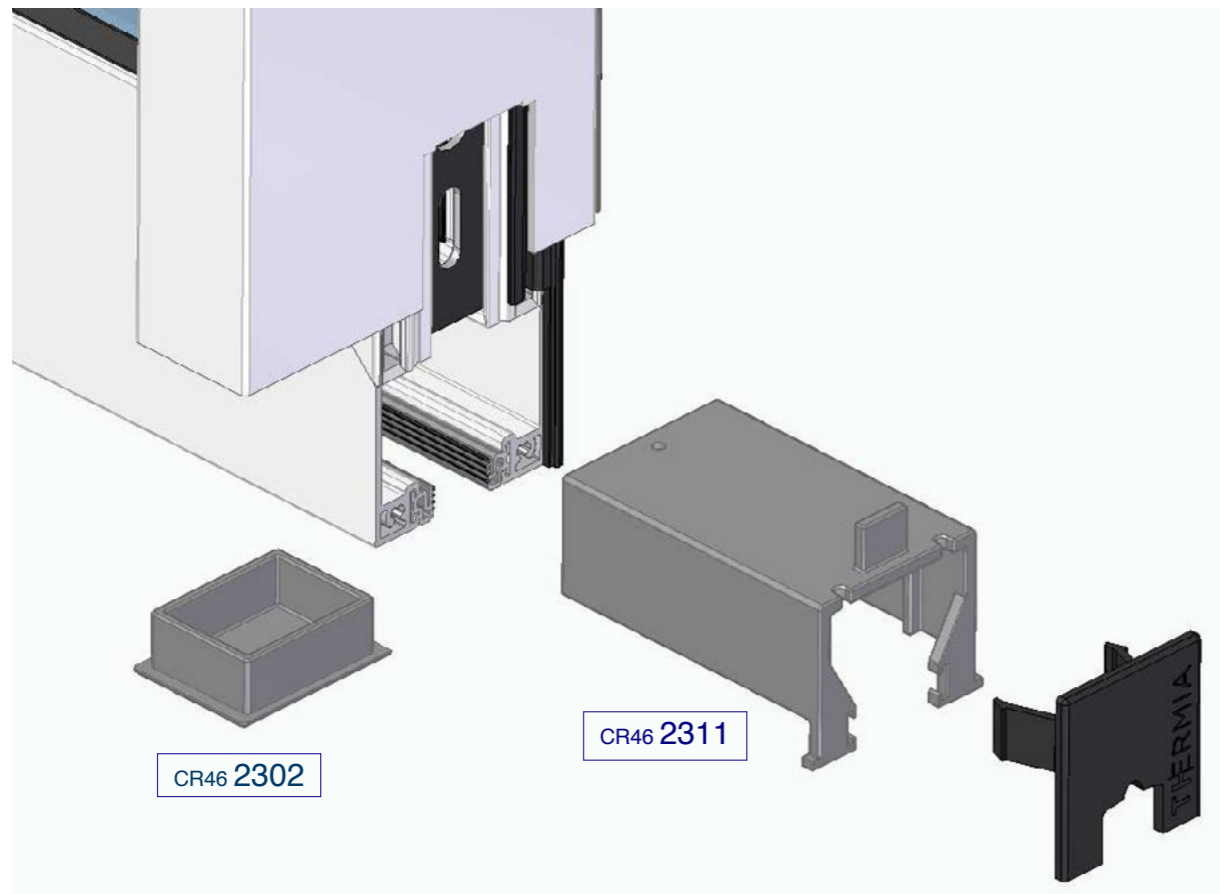
CR46 2311

pieza base para
CR462319



CR46 2319

pieza terminal cruce

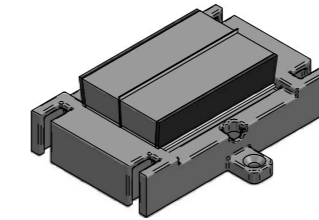


CR46 2302

CR46 2311

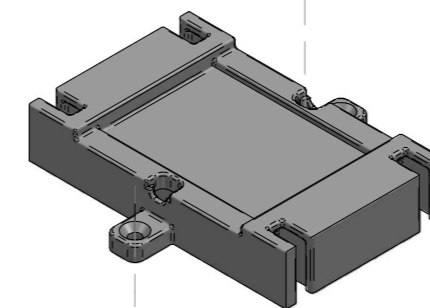
CR46 2319

Cortavientos



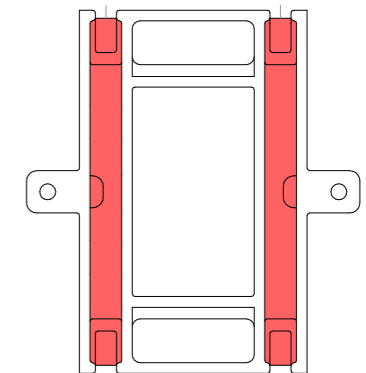
CR46 2317

colocación
silicona

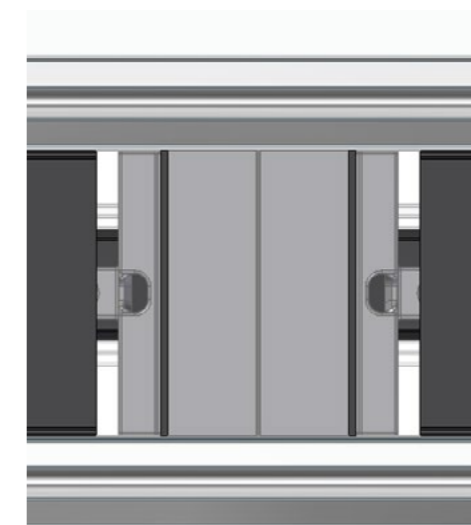


fijación

silicona

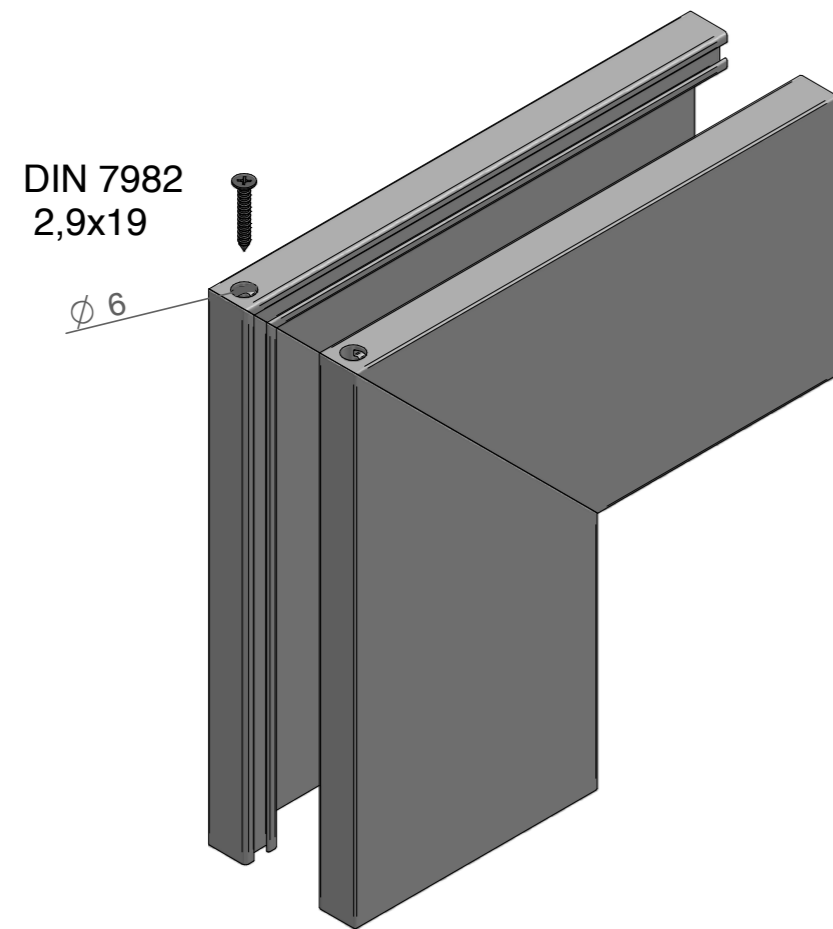
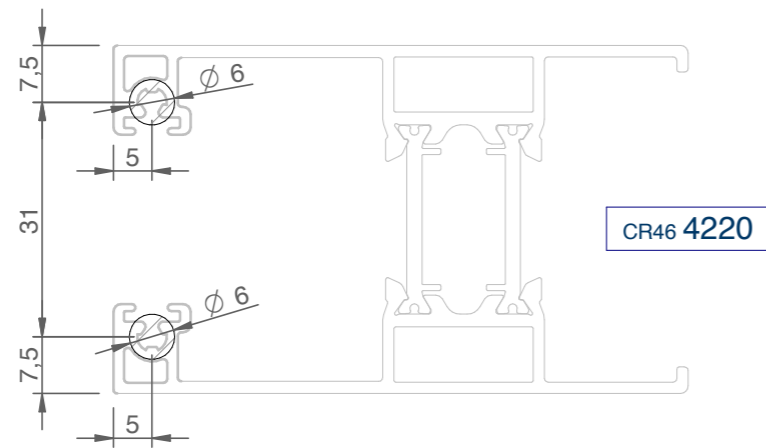


vista inferior

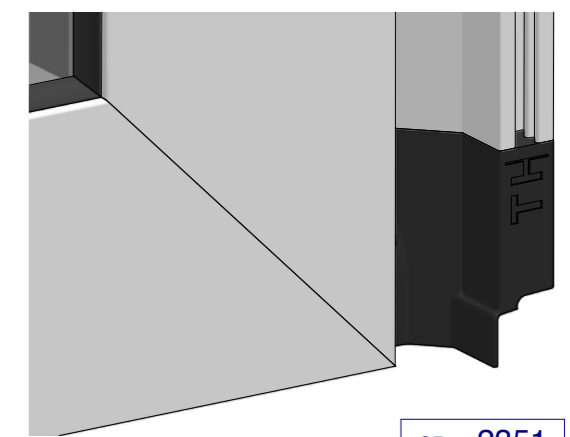
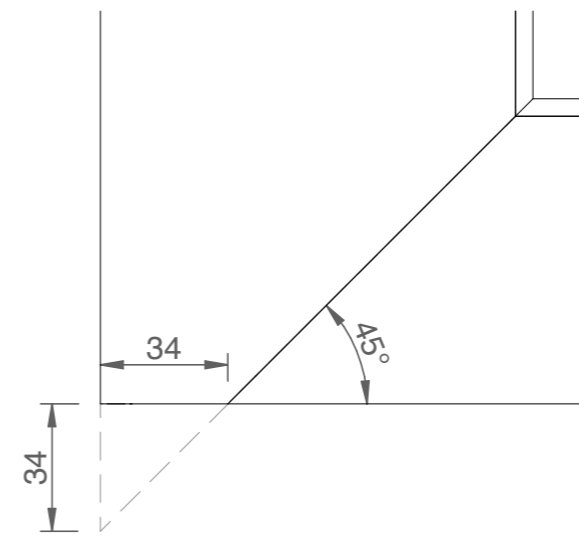
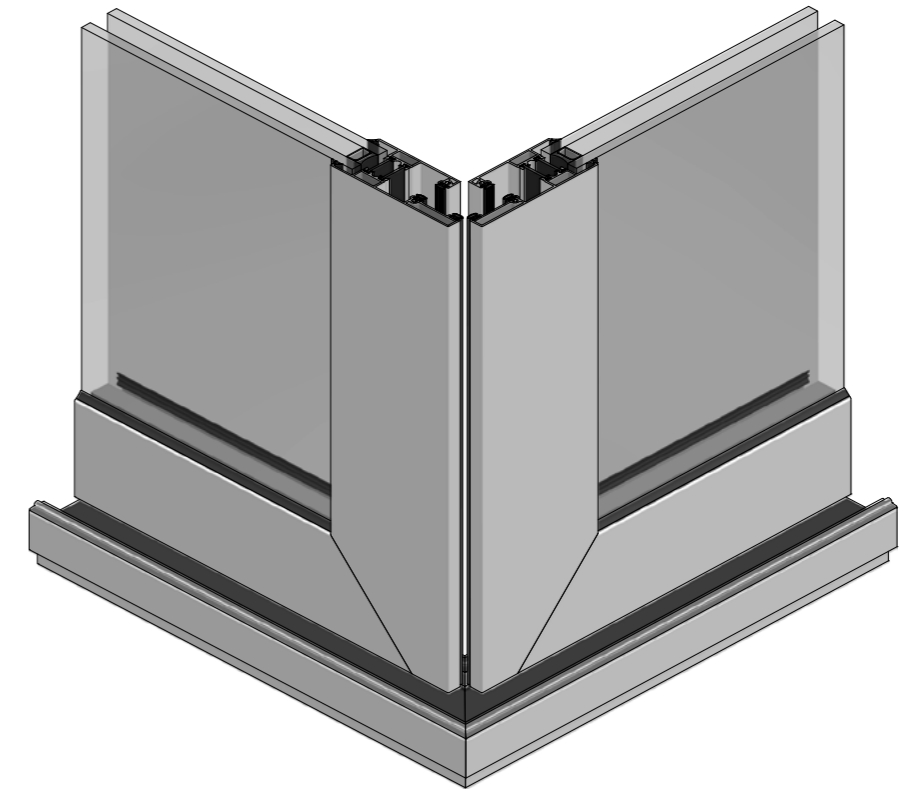


vista superior

Detalle union hoja



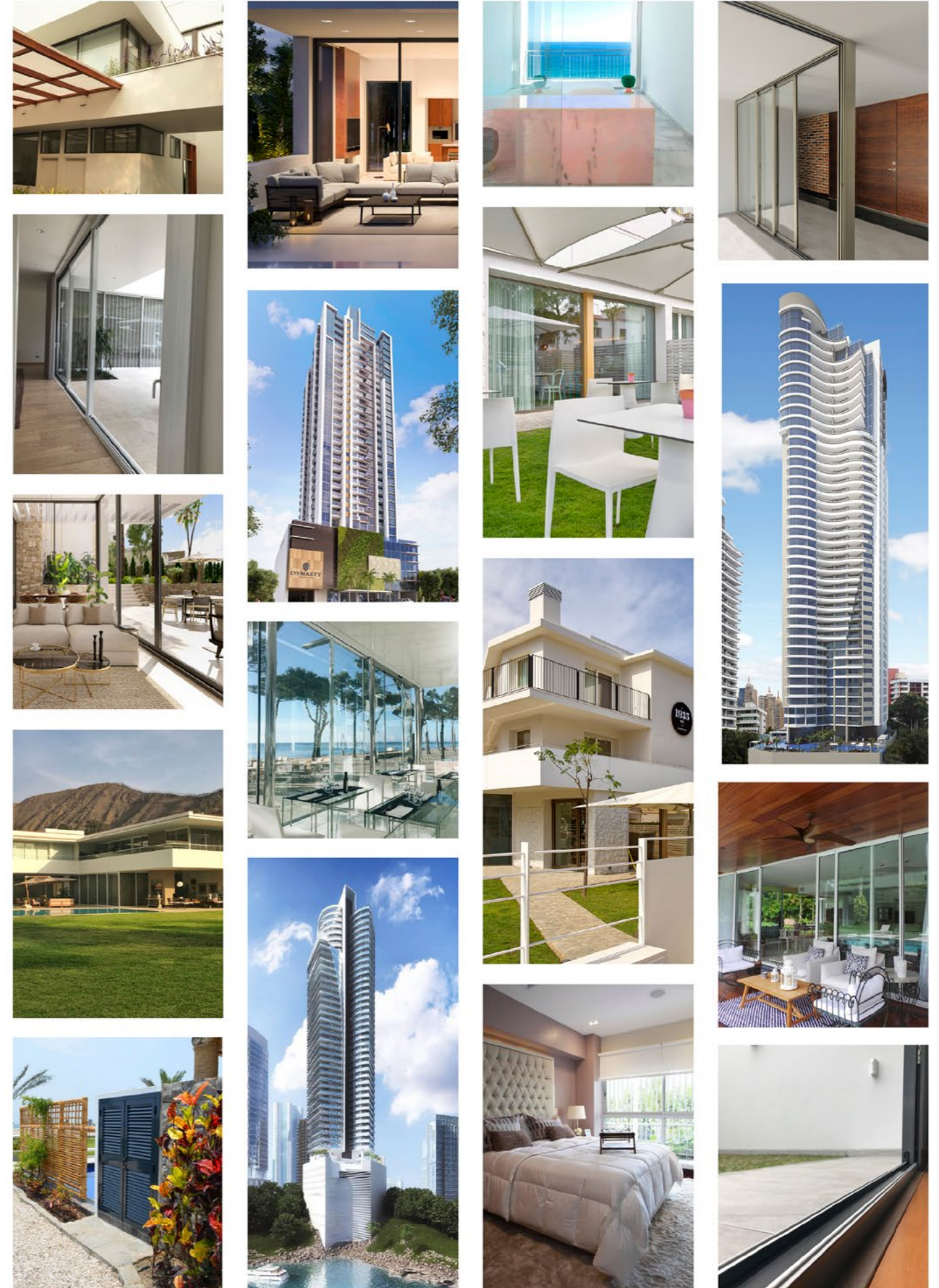
Detalle union hoja kiss



CR46 2351
pieza inf kiss

CR46 2352
pieza sup kiss

Ventanas para vivir mejor



THERMIA®

B A R C E L O N A

Ventanas para vivir mejor

Sede Central en Barcelona

C/ Narcís Monturiol, 34
08192 Sant Quirze del Vallès
Barcelona (España)
Tel. +34 937 121 237
contacto@thermiabarcelona.com
Síguenos en   

Delegación Área Andina

Los Telares, 289
Urbanización Industrial Vulcano
Ate, Lima (Perú)
Tel. +51-1-7197649

Showrooms

Barcelona
Narcís Monturiol, 34
08192 Sant Quirze Valles
Tel. +34 937 121 237

Lima
Paseo de la República, 3583
2o. Piso - San Isidro
Tel. +51-1-7197649

Girona
Carrer Sant Jordi, 2
Local 4 - Sarrià de Ter
Tel. +34 937 121 237

THERMIABARCELONA.COM