

CONNECT  
WITH THE  
OUTDOORS

THERMIA CR46  
**MAGNA**

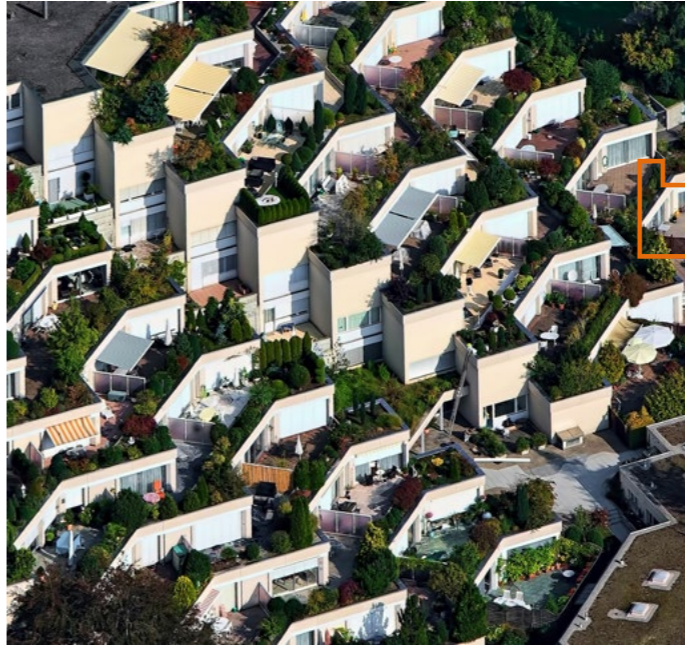
HIGH PERFORMANCE RANGE OF  
SLIDING WINDOWS



**THERMIA**<sup>®</sup>  
BARCELONA



Photograph for inner cover and back cover:  
Sven wbGUE7weLAY @shauSte  
Ricardo Gomez Angel @ripato  
Josh Wilburne @joshwilburne



**Design  
Comfort  
Silence**

An increasingly faster pace of life entails an inevitable disconnection with the outdoors and with nature. This is our energy source, our primordial home.

Connecting with nature means once again feeling calm, restoring a balance and achieving a sense of well-being. Nature is synonymous with recuperation.

If we provide our day-to-day life with views of the great outdoors, we will create a more harmonious, wholesome and peaceful mood.

Connecting with the great outdoors means connecting with your inner self.

# Feel the natural light.

Natural light is a priority in modern architectural design, a subtle and invisible guiding principle that can create magical and vibrant natural settings.



Specialists know that well-being, comfort and health are all largely determined by the amount of natural light we are exposed to.

**Design**  
**Comfort**  
**Silence**



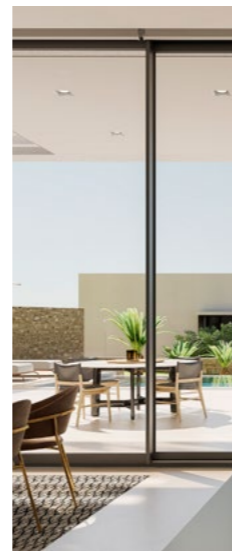
*More natural light*  
*More views of the outdoors*  
*Larger dimensions*  
*More insulation*

Modern architecture has evolved towards simple shapes and asymmetric distribution, and away from facades which have now become glass surfaces allowing more natural light to enter the interior setting.

Thermia CR46 MAGNA® is an innovative, high-performance, insulating sliding window system, allowing the creation of structures with large dimensions and meeting the latest architectural demands in which natural light plays a pivotal role.



Slender  
and minimalist lines



The Thermia CR46 **MAGNA** is a high-performance sliding window, designed to guarantee maximum thermal and acoustic benefits.

# The anatomy of the Thermia CR46 MAGNA

Able to support the weight of glass up to **300 kg** per leaf

Maximum glazing width 34 mm

The non-lift and slide mechanism makes it a more economical option for large openings



Minimalist look

Centre with less aluminium

Optional frameless 90° opening and closing



# Thermia CR46 MAGNA

High-performance sliding SERIES

Technical features of the Thermia® CR46 MAGNA	
Thermal break	24 mm
Main frame	65 mm
Main leaf	46 mm
Maximum glazing width	34 mm
General thickness of the profiles	1.6 mm
Maximum leaf weight	up to 300 kg / leaf
Track option	2, 3 or more tracks
Available profiles	Window / Balcony Door
90° frameless closure solution	Yes

Window  $U_w = 1.60 \text{ W/mK}^*$  Profile  $U_f = 3.22 \text{ W/mK}^2$

\* Based on EN 10077-02 Balcony Door 2800 x 2250 glass  
 $U_g = 1.0 \psi = 0.053$



Acoustic attenuation up to 38 dB with acoustic laminated glass of 44.A/cam/44.A composition (window measuring 1230 x 1450)

## Thermia® CR46 MAGNA test results

	Air permeability	4
	Watertightness	6A
	Window wind resistance	C5
	Balcony door wind resistance	C3

Results obtained from internal tests based on Appendix E of standard EN 14351-1:2006+A2:2016



## Detail of central profile



## Quality seals



Qualanod seal for anodization  
Licence number: 1014



Qualicoat seal for the lacquer  
Licence number: 405



Qualideco seal for the imitation wood  
Licence number: ES-0009F

## Certification



THERMIA BARCELONA  
EN14351-1:2006+A2:2016

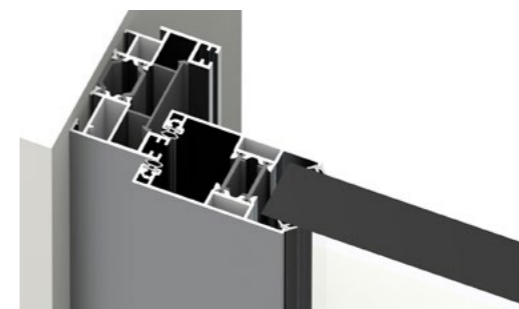
## Structural solutions



2 leaves 2 tracks with central reinforcement



Joining of central leaves



Lateral joining of main frame and leaf

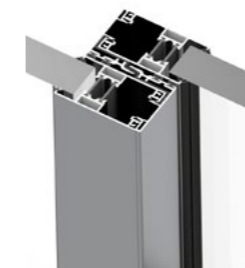


Multi-track frame with 4 tracks



Large central joining option

Small central joining option



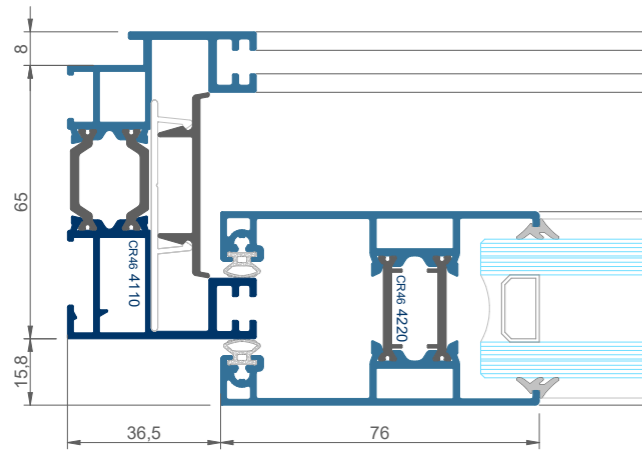
Central joining all around option



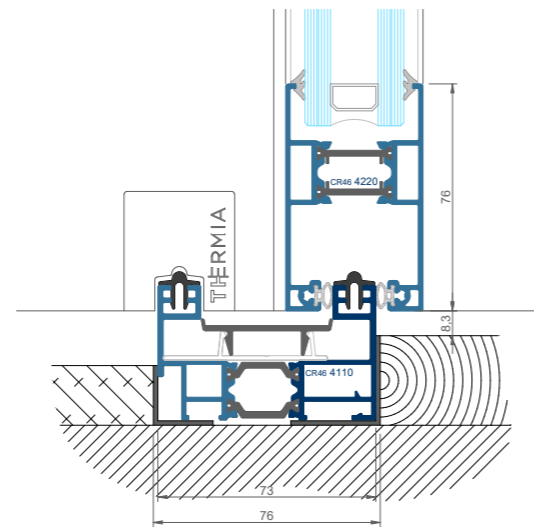
90° frameless joint

# Structural solutions

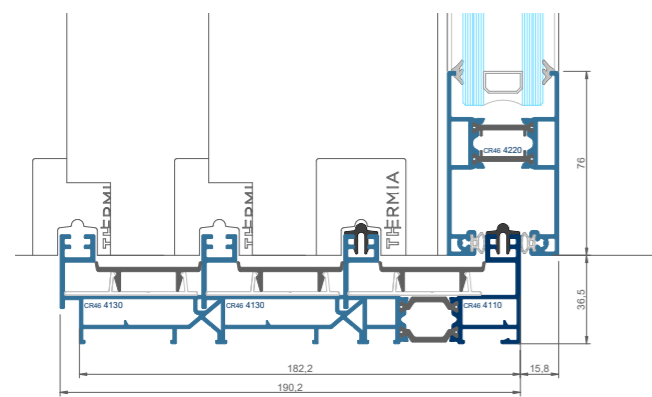
MAIN FRAME-LEAF SECTION



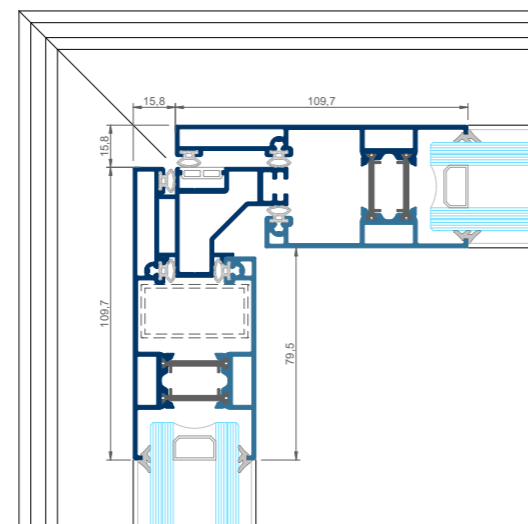
RECESSED MAIN FRAME



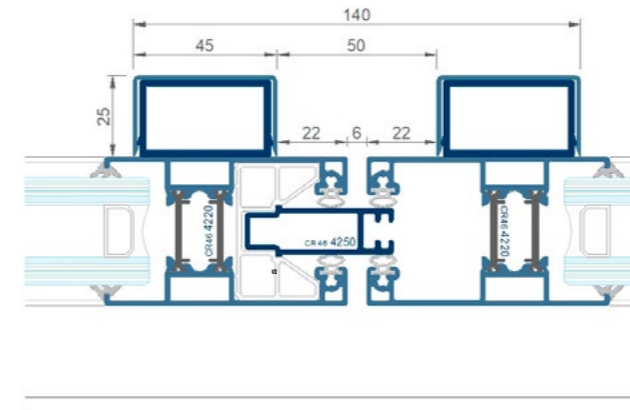
MULTI-TRACK FRAME FOR STRUCTURES OF +2 LEAVES



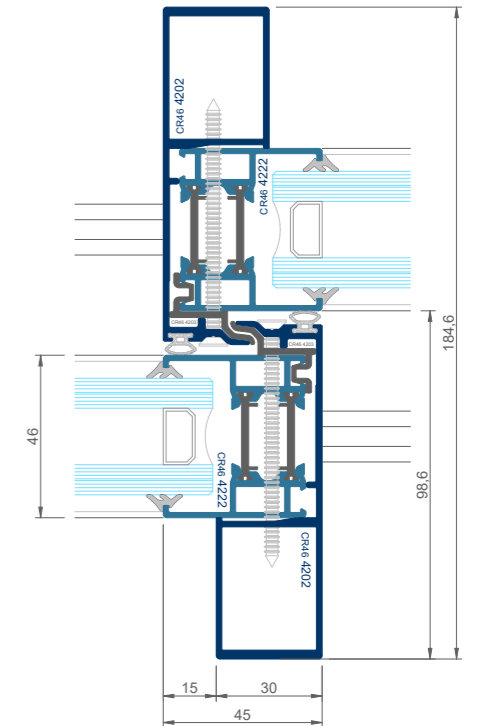
VERTICAL JOINT OF LEAVES AT 90° FRAMELESS



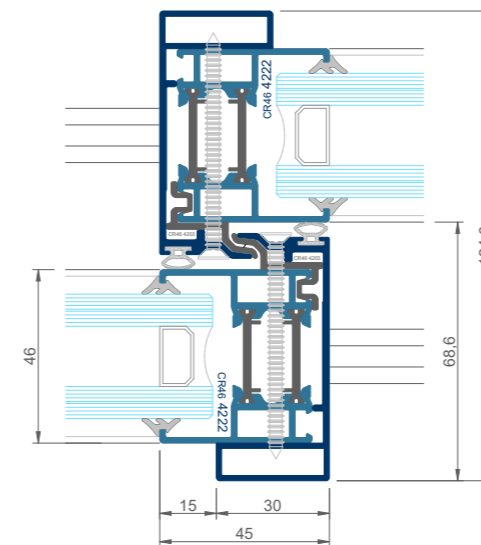
CENTRAL WITH 3 LEAVES



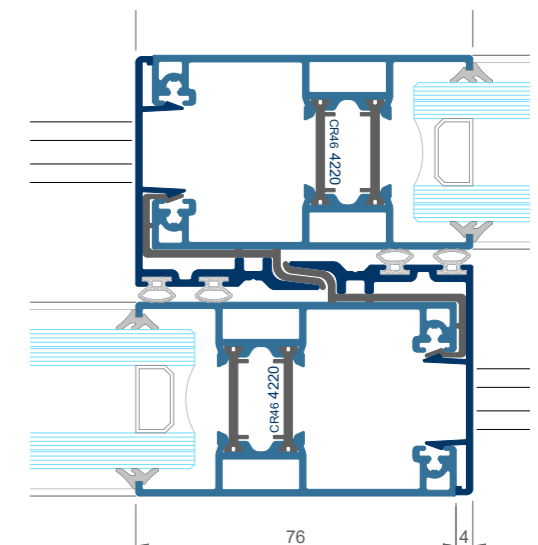
CENTRAL BALCONY DOOR (LARGE REINFORCEMENT)



CENTRAL WINDOW (SMALL REINFORCEMENT)



100% PERMIETER BALCONY DOOR CENTRE



(cross-section drawing not to scale)

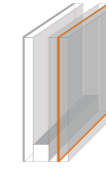
The Thermia CR46 **MAGNA** system is designed so that its architectural presence is subtle and favours aspects such as space, scale and light. However, its technology allows it to optimally perform its insulating and sealing functions.



# Insulating technology



Double glazing with chamber



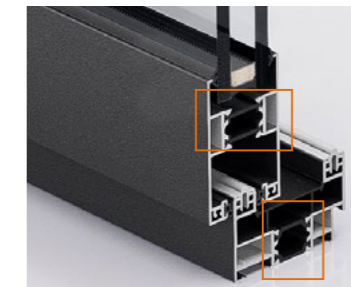
Double glazing with chamber and laminated glass panels

## GLAZING

Its great glazing capacity facilitates the installation of high-insulating glass compositions.

**34 mm**

Maximum insulating capacity

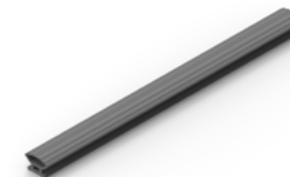


## THERMAL BREAK (TB)

The thermal break design provides more thermal insulation.

**24 mm**

TB capacity



## THERMOPLASTIC (TPE)

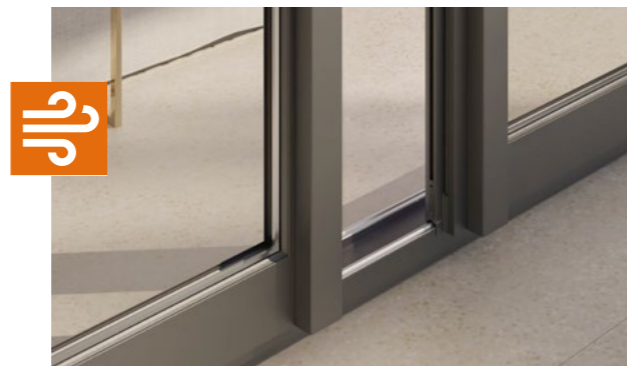
The rubber and sealing joints are made of TPE (thermoplastic elastomers), a class of polymer that produces materials with thermoplastic and elastomeric properties. These ensure the sealing properties of the windows for many years.



# Functional design

Windows made to measure for their **users**

 Up to 300Kg / leaf

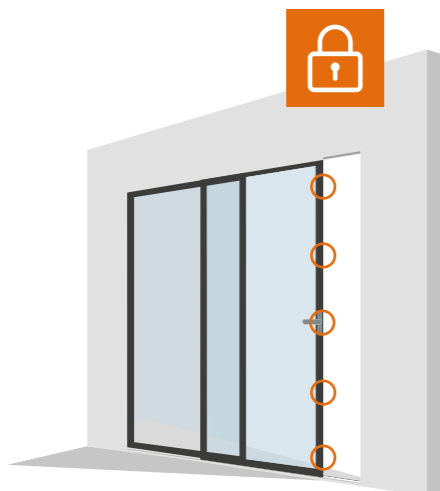


## Up to 300 Kg / leaf

The double-tandem adjustable wheels support weights of **up to 300 kg per leaf**, facilitating both assembly and sliding of the leaf along the track.

## The wind, **under control**

The MAGNA solution enables structures of great heights and widths to be created. That is why special emphasis is placed on the **reinforcement of the central and lateral leaf**. Thanks to its design we have achieved **improved inertia and wind resistance**.



## Maximum **security**

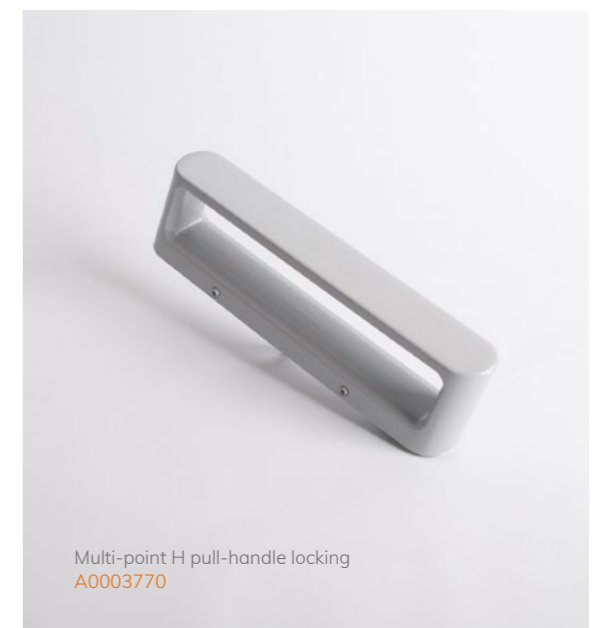
The series offers the multipoint locking system option. The locking points are located every 500 mm.

# Beauty in the details

Choose between different aesthetics, colours and finishes



## Modern manoeuvrable fittings to accessorise a **great window**



Integration with  
our natural environment  
makes for  
true integration

**Windows for a better life**



# THERMIA®

B A R C E L O N A

## Headquarters in Barcelona

C/ Narcís Monturiol, 34  
08192 Sant Quirze del Vallès  
Barcelona (Spain)  
Tel. +34 937 121 237  
[contacto@thermiabarcelona.com](mailto:contacto@thermiabarcelona.com)

## Showrooms

**Barcelona**  
C/Narcís Monturiol 34  
08192 Sant Quirze Vallès  
Tel. +34 937 121 237

**Girona**  
Carrer Sant Jordi, 2  
Local 4 - Sarrià de Ter  
Tel. +34 937 121 237

**Lima**  
Paseo de la Republica 3583  
2o. Piso - San Isidro  
Tel. +51-1-7197649

## Andean Area Delegation

Los Telares, 289  
Urbanización Industrial Vulcano  
Ate, Lima (Peru)  
Tel. +51-1-7197649

**THERMIABARCELONA.COM**

