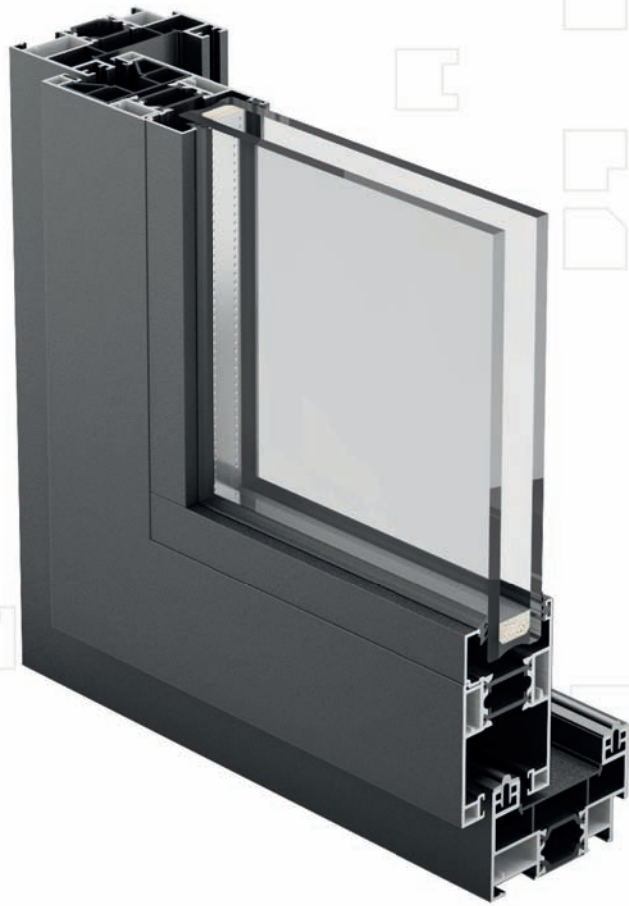


SISTEMA CORREDERO



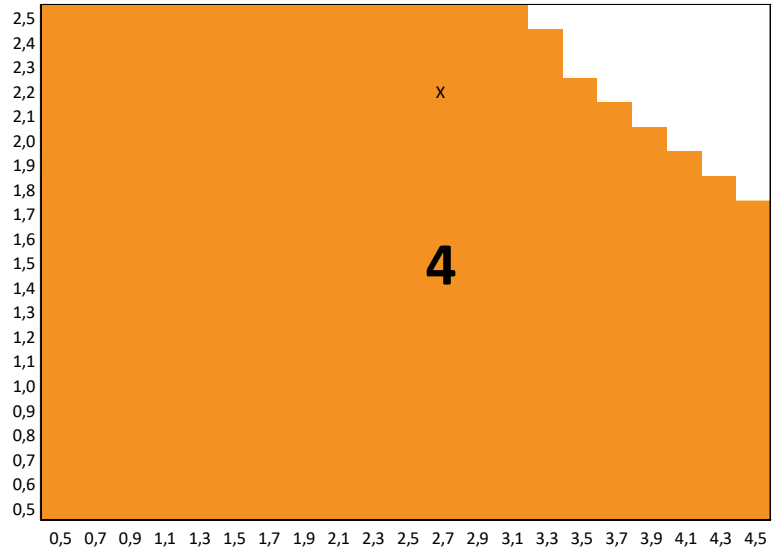
SISTEMA CORREDERO / THERMIA® CR46

THERMIA® CR46
Última tecnología en ventanas.

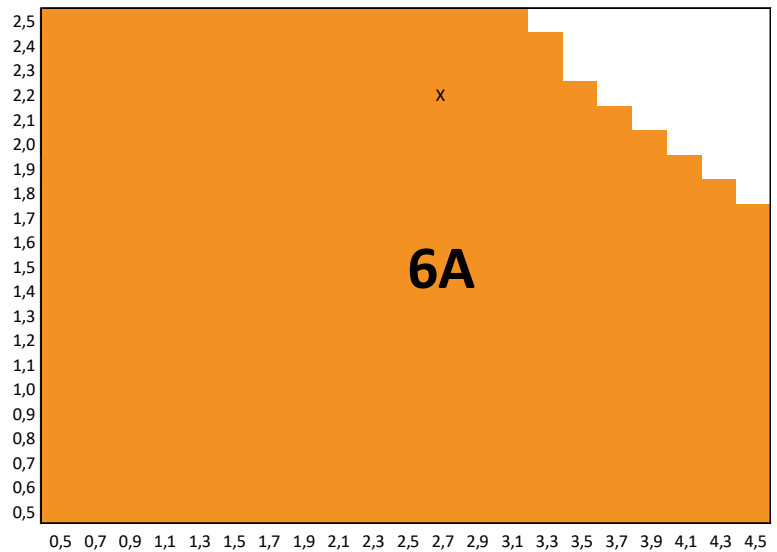
THERMIA®
BARCELONA

Ventanas para vivir mejor

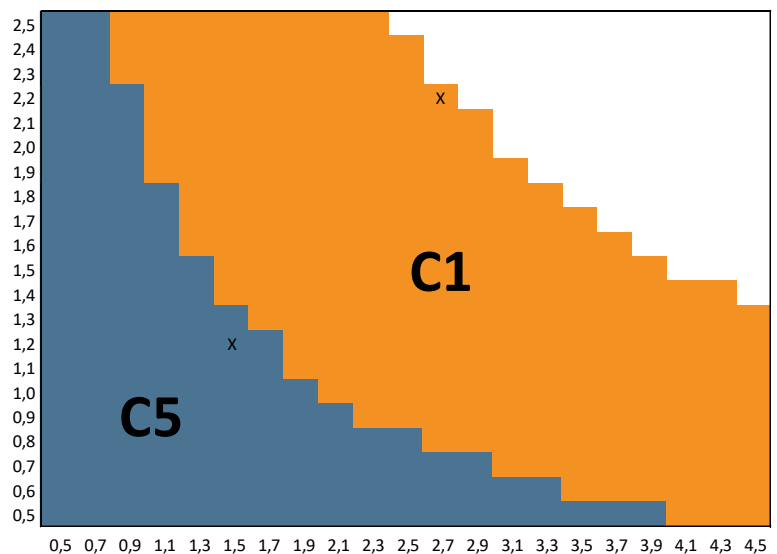
PERMEABILIDAD AL AIRE según EN 12207 - Marcado CE según EN 14351-1:2006 (E.1)



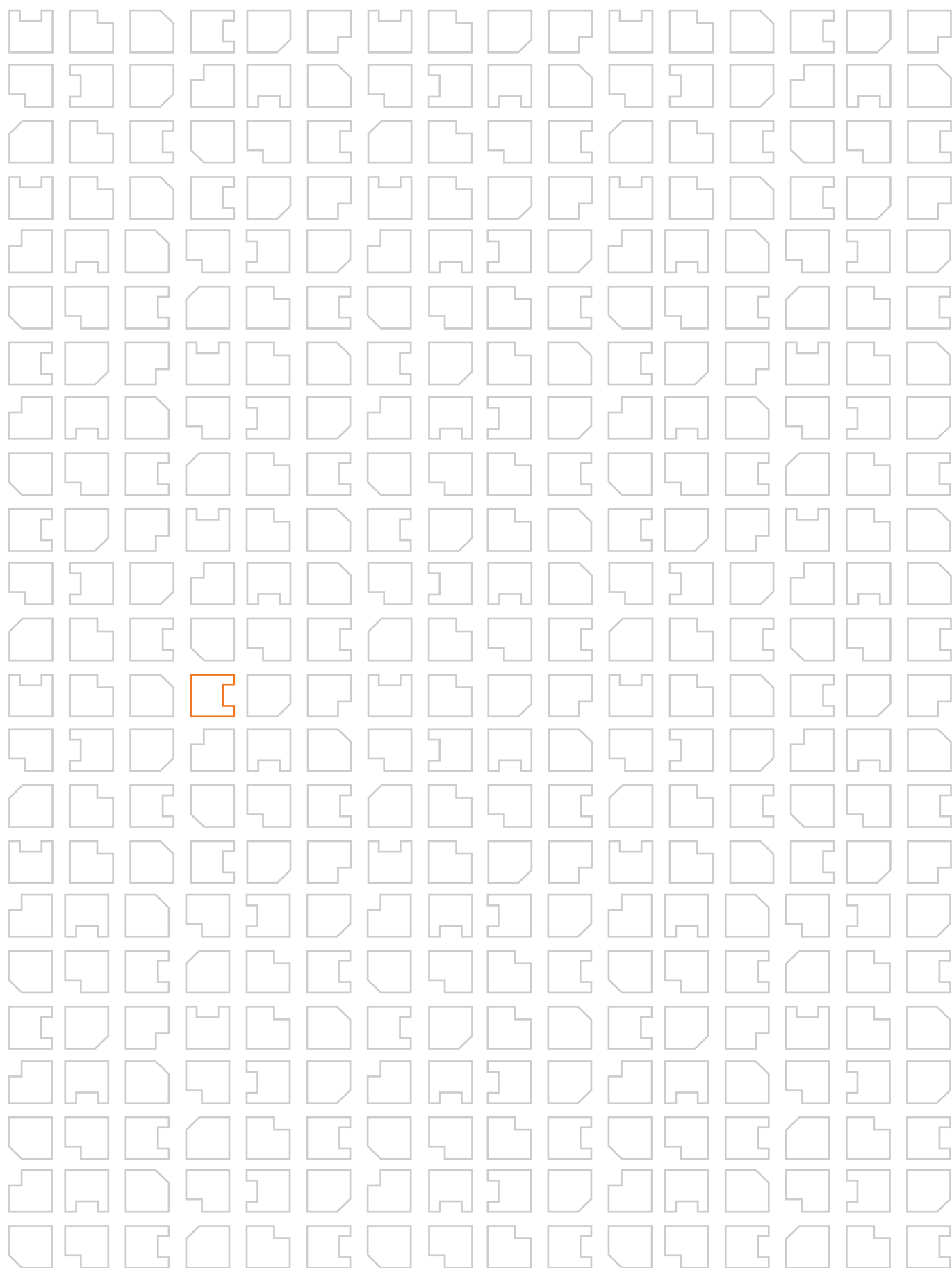
ESTANQUIDAD AL AGUA según EN 12208 - Marcado CE según EN 14351-1:2006 (E.1)

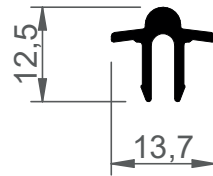


RESISTENCIA AL VIENTO según EN 12210 - Marcado CE según EN 14351-1:2006 (E.1)

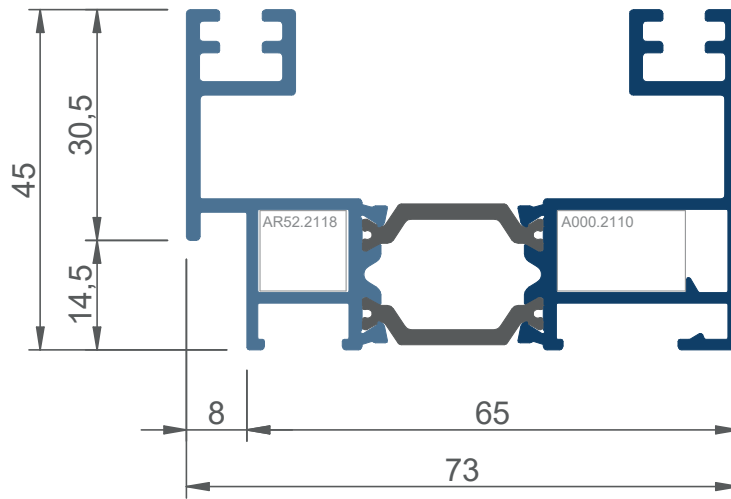


Resultados obtenidos de los informes oficiales
num.: 232625 y 232626 según ensayos
realizados en Ensatec, y en base al Anexo E
de la norma EN 14351-1:2006

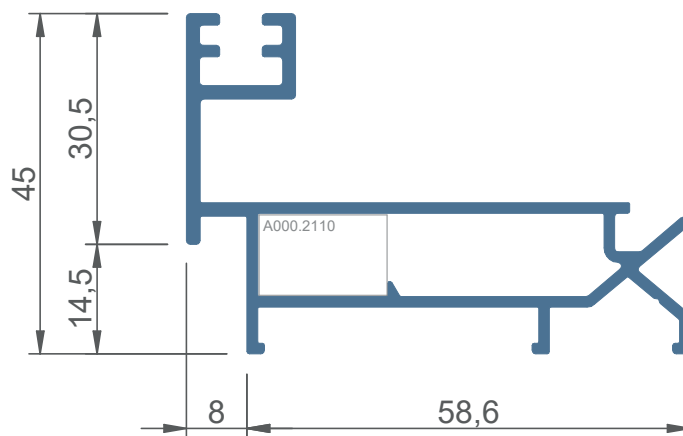




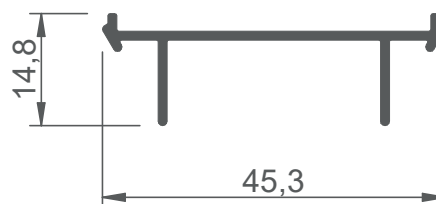
CR46 4100



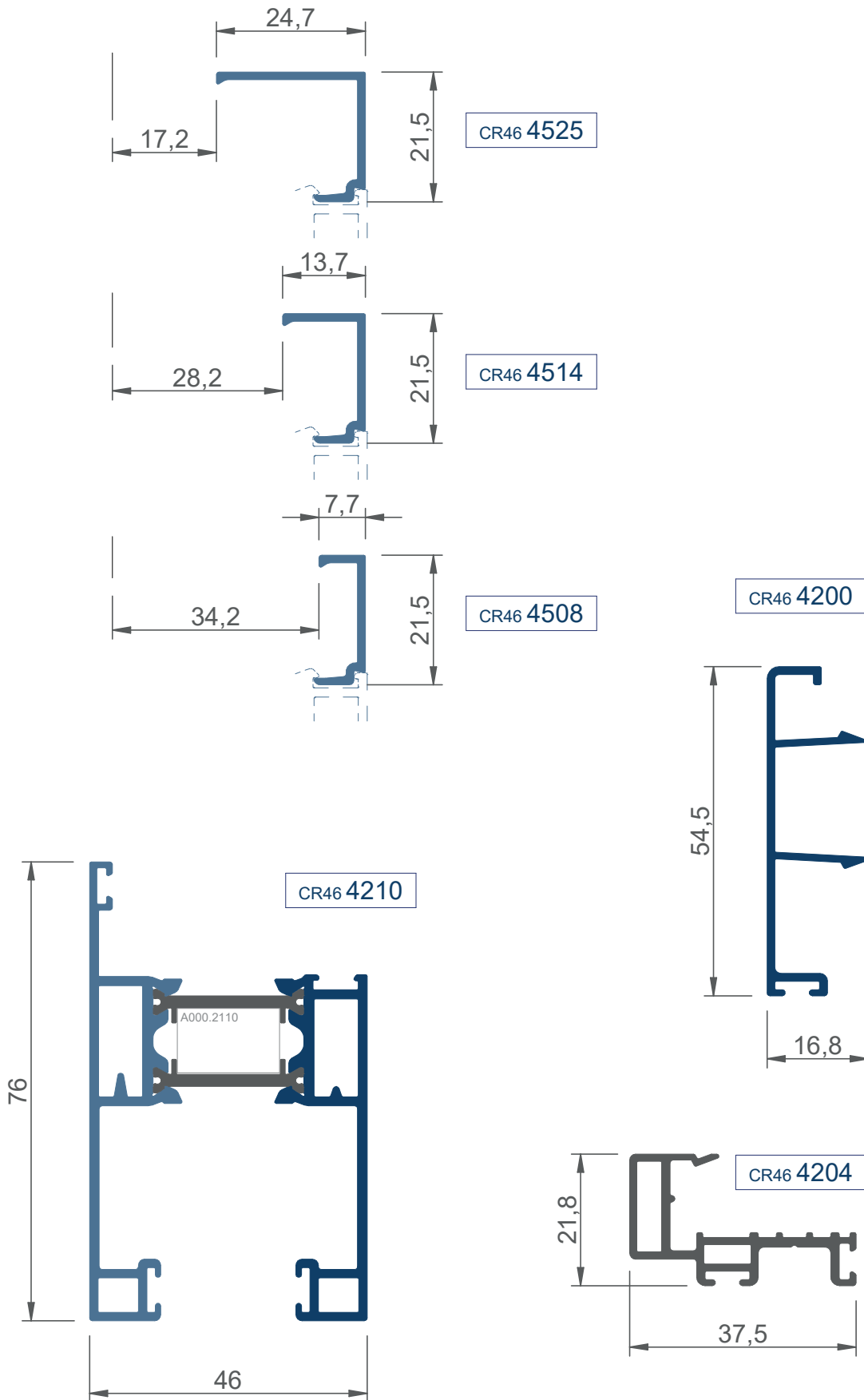
CR46 4110

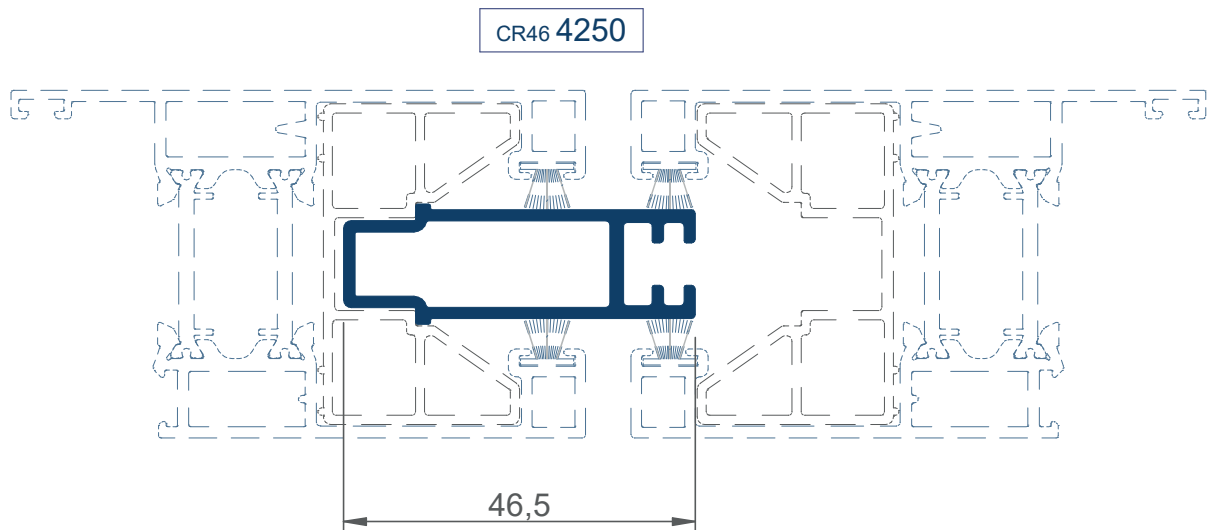
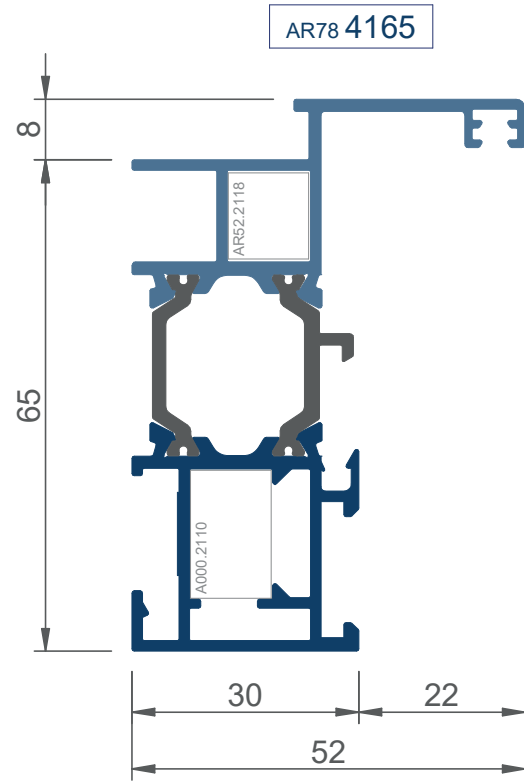
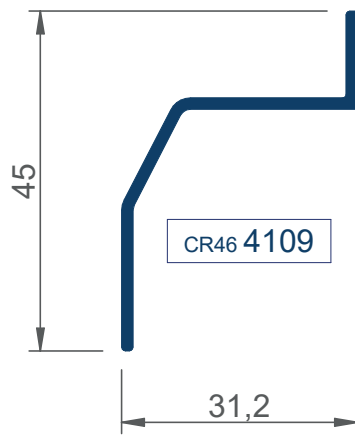
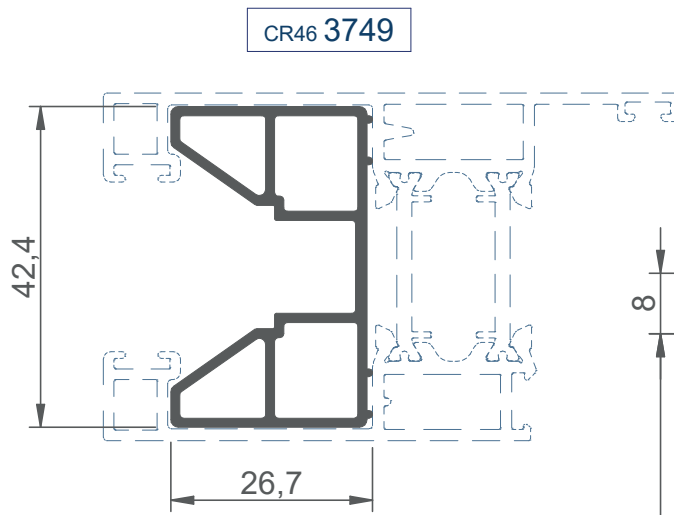


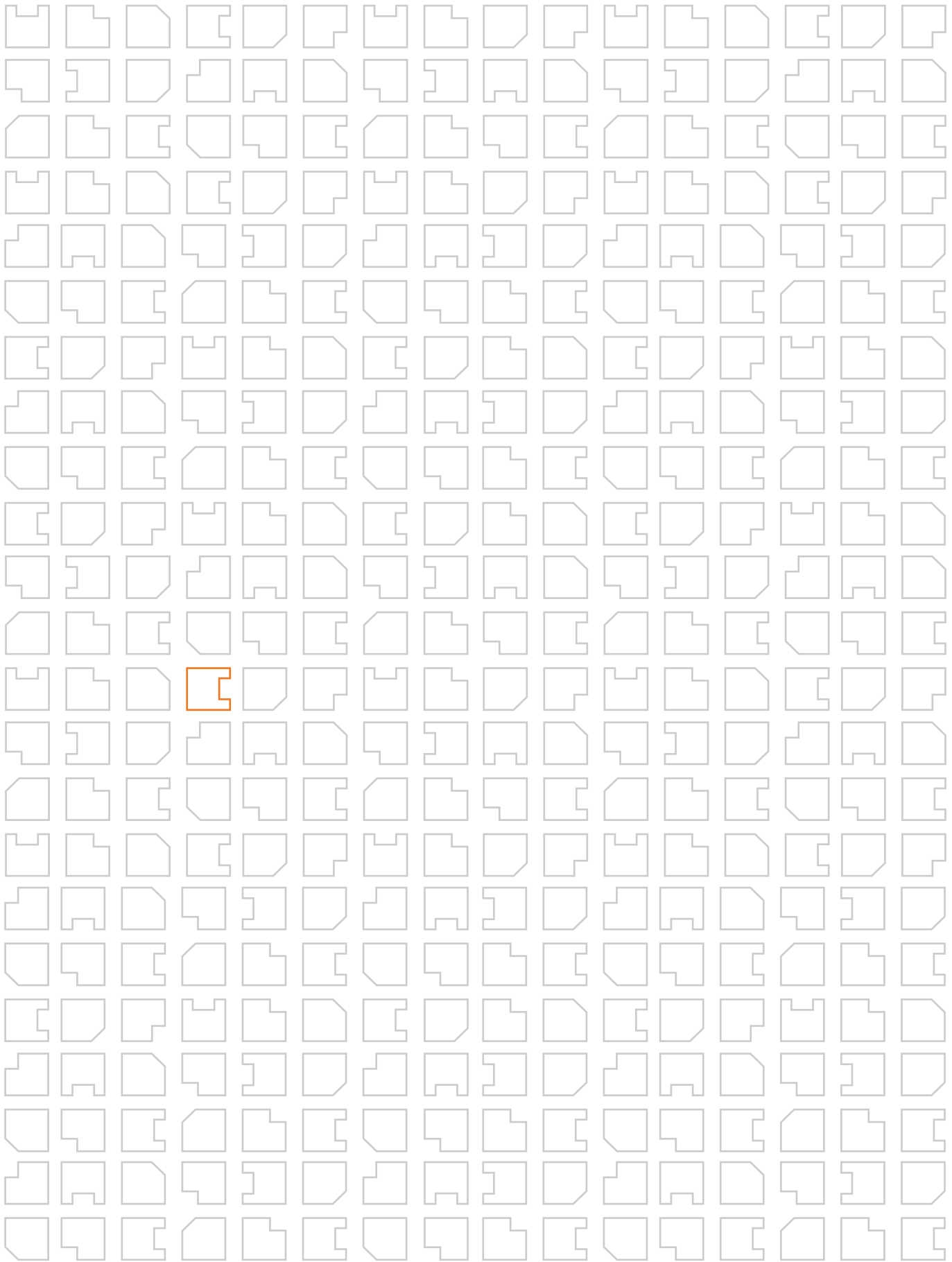
CR46 4130

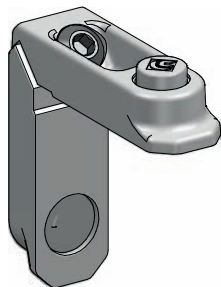


CR46 4101

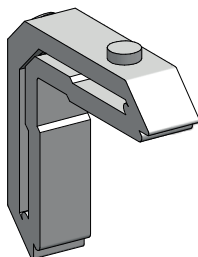




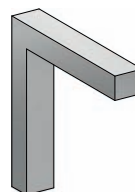




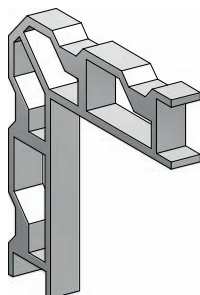
A000 2110



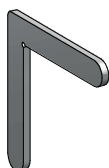
AR52 2118



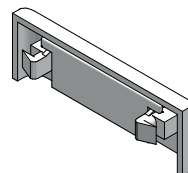
CR46 2144



CR46 2132



A000 2144



A000 2300



CR46 2301

junta ranura marco



A000 2351

junta exterior (2mm)



A000 2320

junta comp cruce



A000 2353

junta cuña (de 3 a 5mm)



A000 2365

junta estanq TRIFIN



A000 2355

junta cuña (de 5 a 7mm)



A000 2357

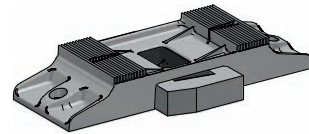
junta cuña (de 7 a 9mm)



CR46 2312



CR46 2314

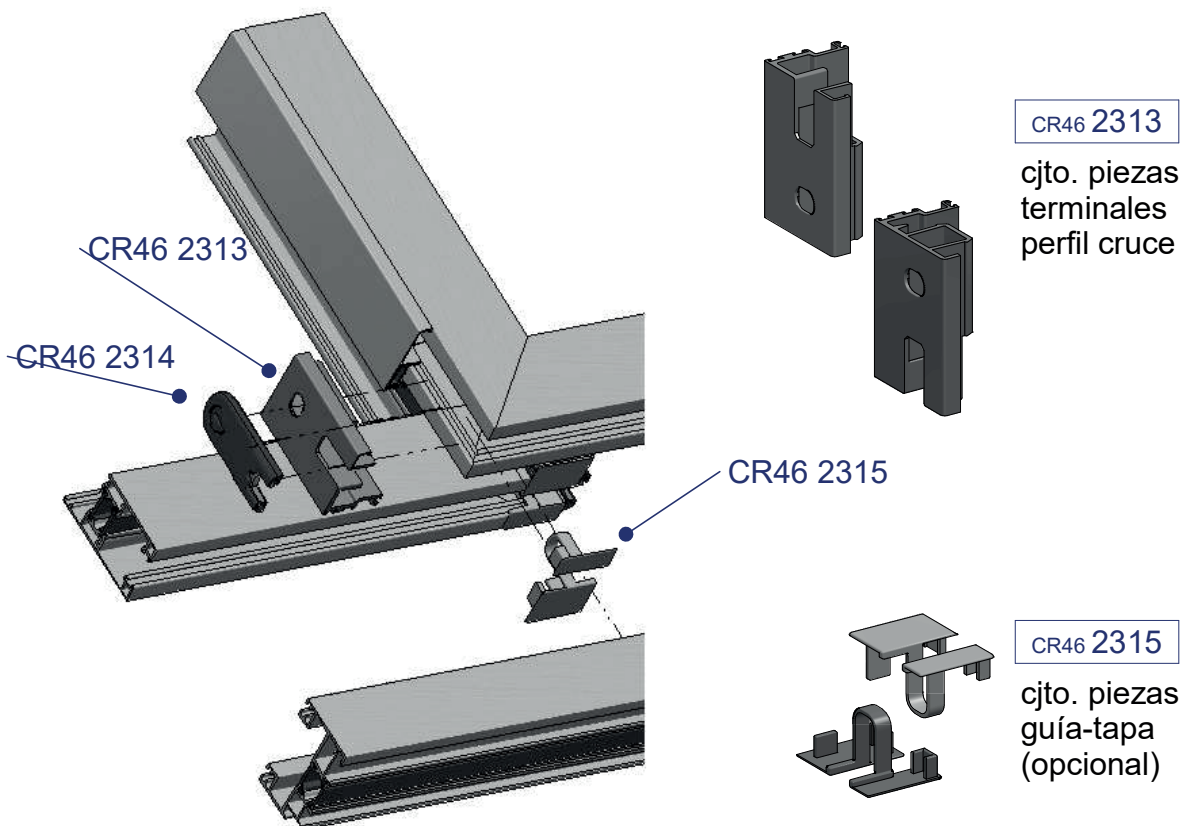


CR46 2316



CR46 3784

rueda tándem regulable
Pabose / (200 kg/hoja)



CR46 2313

cjto. piezas
terminales
perfil cruce

CR46 2313

CR46 2314

CR46 2315

CR46 2315

cjto. piezas
guía-tapa
(opcional)



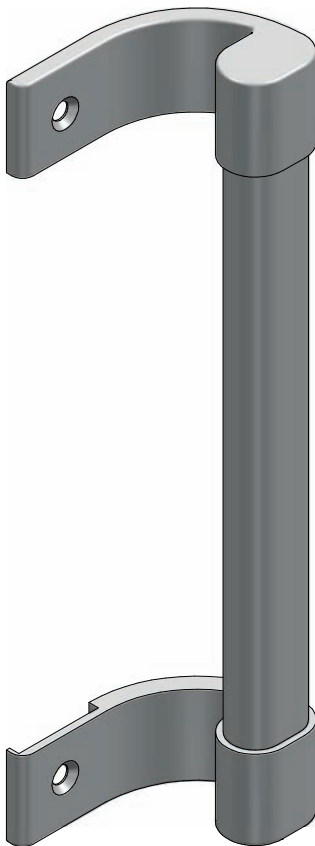
CR46 3710
gancho y cerradero



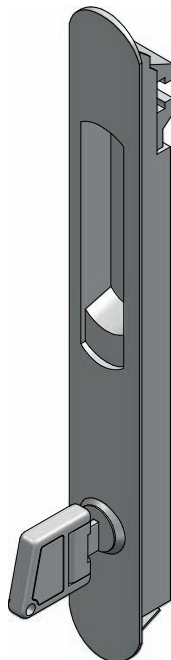
A000 3732
cierre corto



A000 3734
cierre base



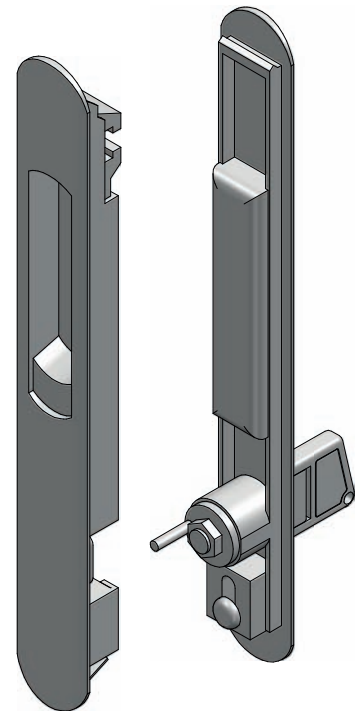
A000 3731
tirador universal



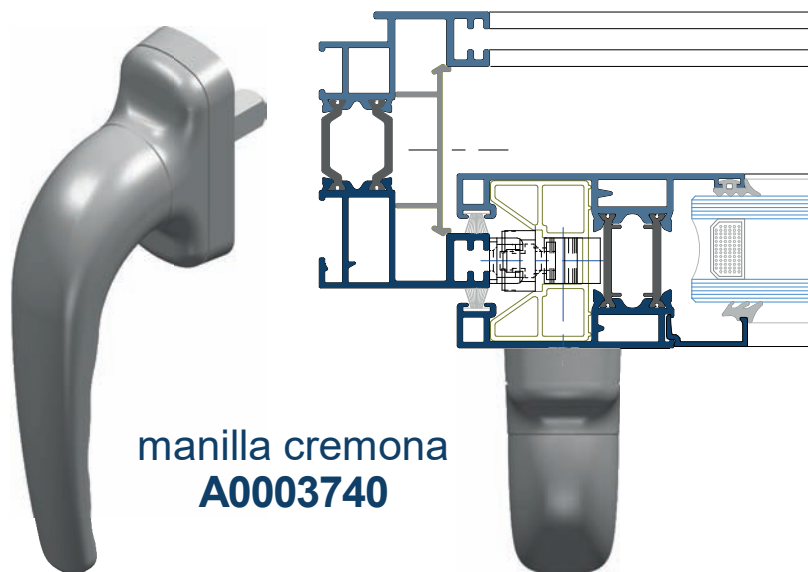
A000 3735
cierre con llave



A000 3738
uñero ext

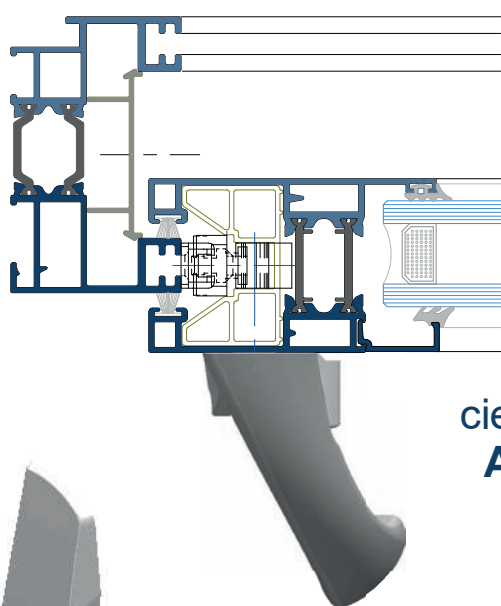


A000 3736
cierre con llave ext



manilla cremona
A0003740

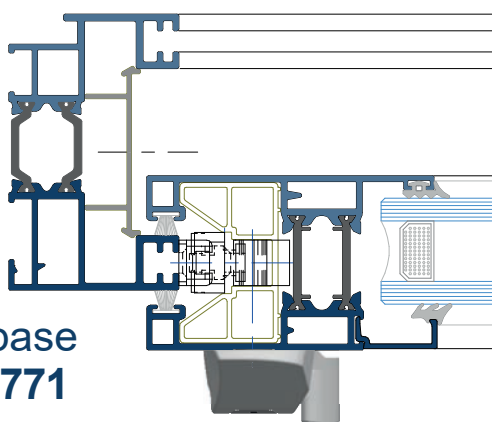
manilla hoja
secundaria
CR463751



cierre tirador
A0003770



cierre base
A0003771

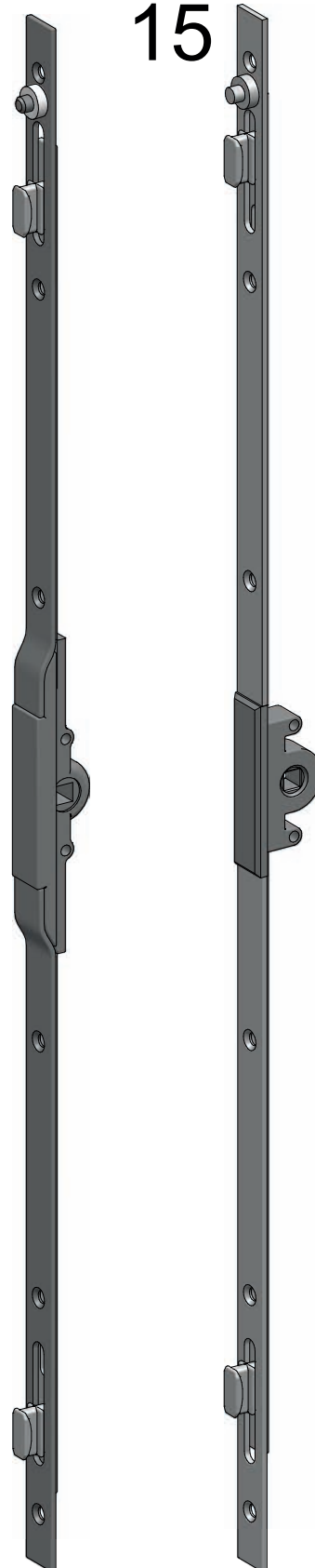




A000 3740

7,5

15



tornillo y tuerca
metálicos para fijación
de cerraderos



CR462330

ENTRADA 7,5mm

A000 3746.1 (long 600)

A000 3747.1 (long 1000)

A000 3748.1 (long 1800)

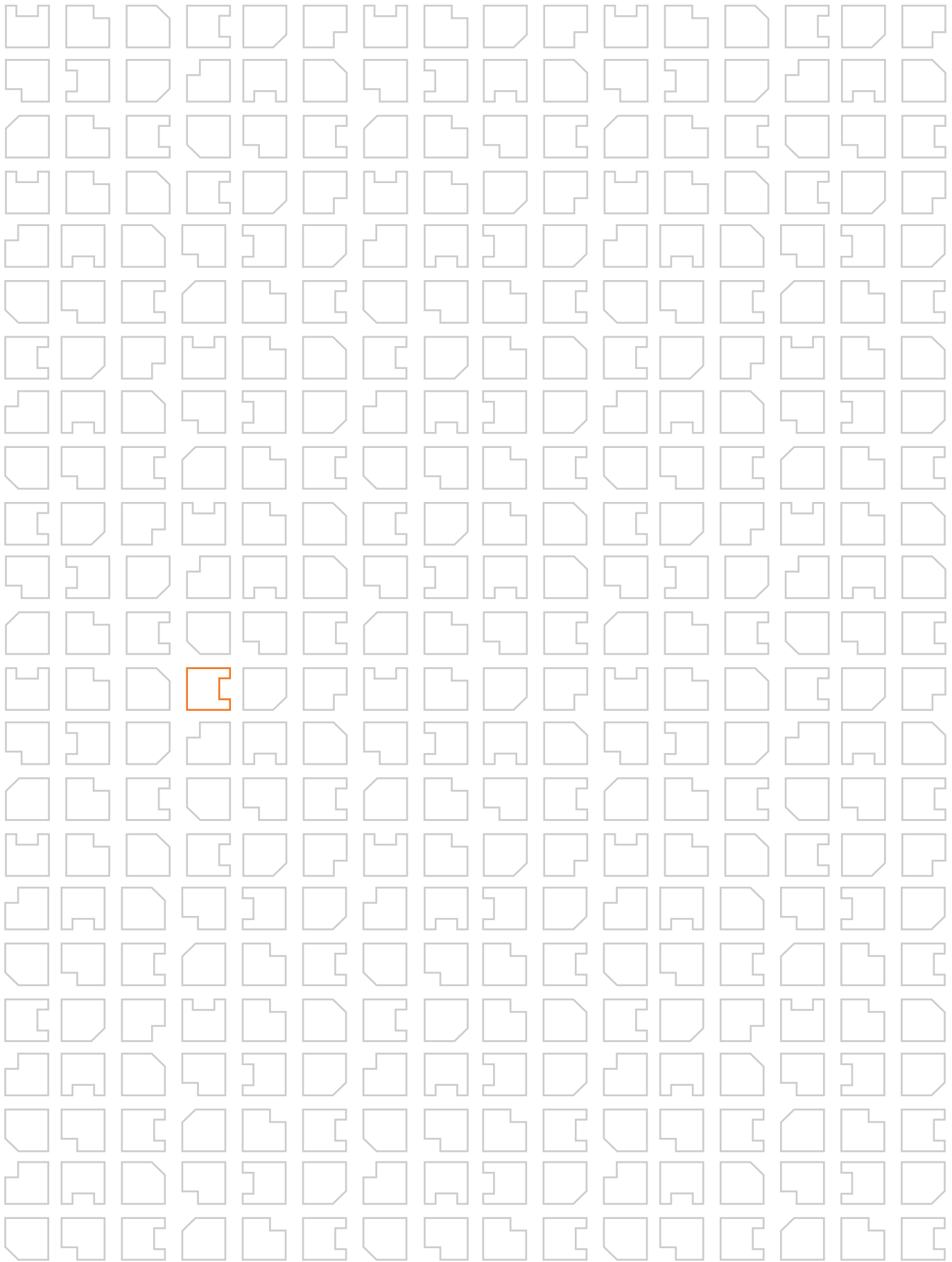
ENTRADA 15mm

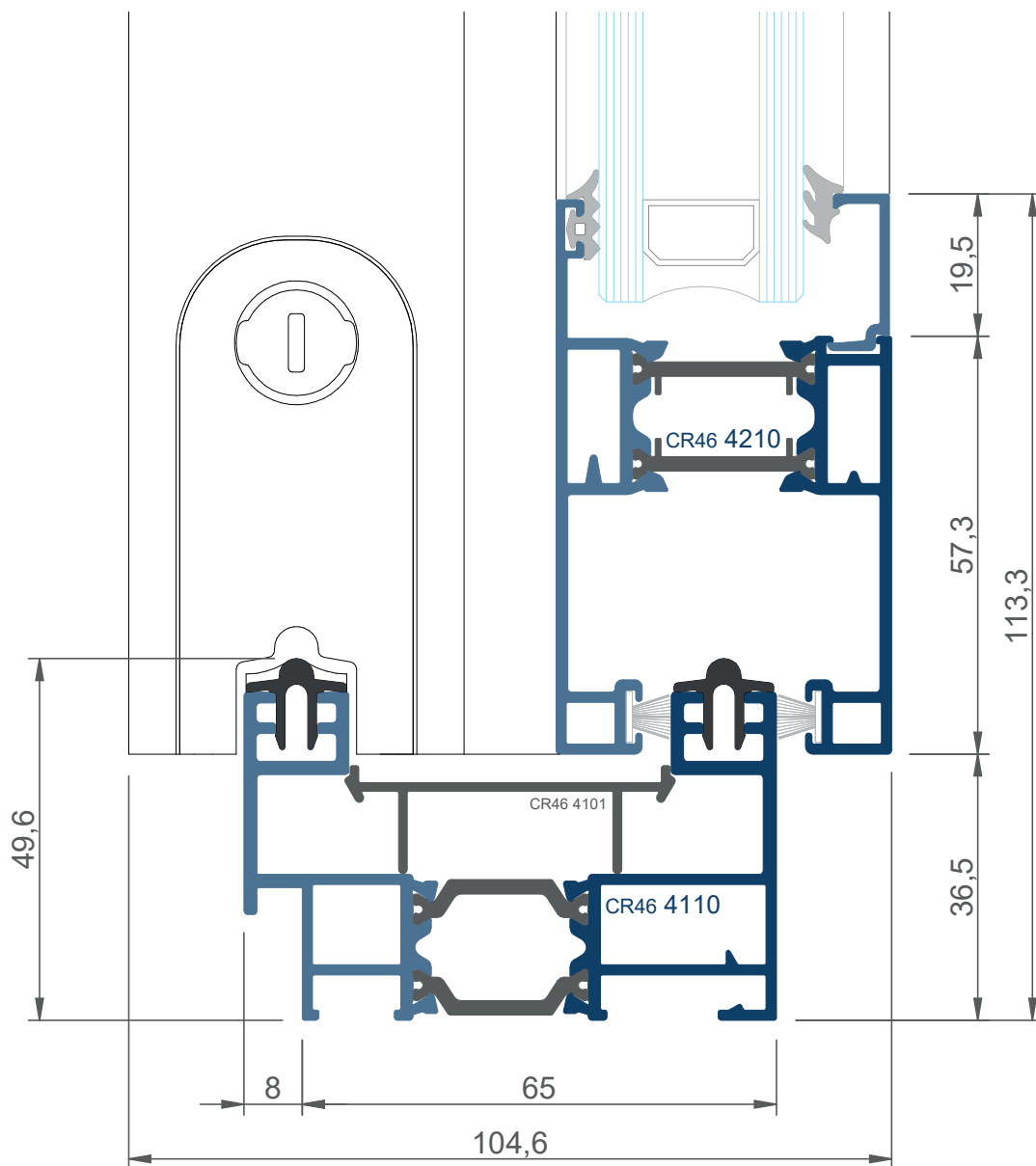
A000 37464 (long 600)

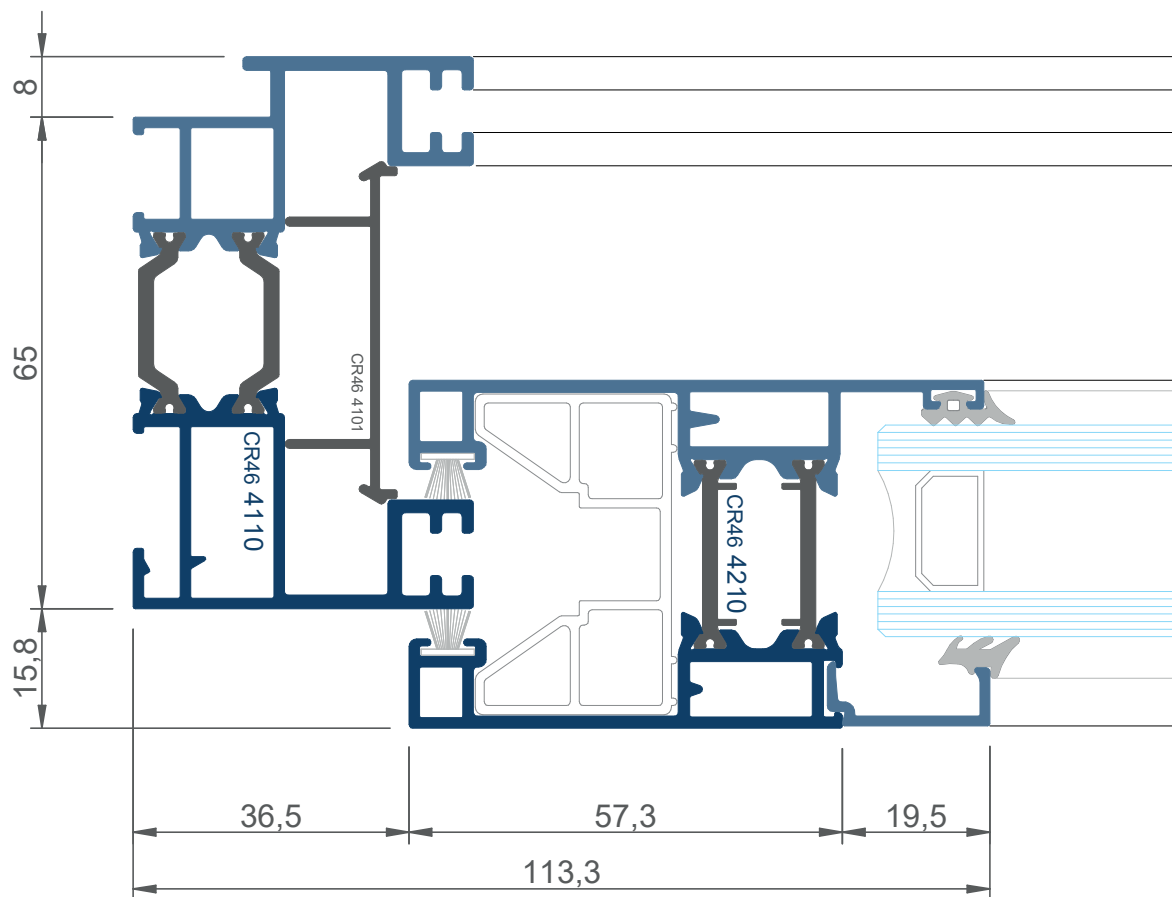
A000 37474 (long 1000)

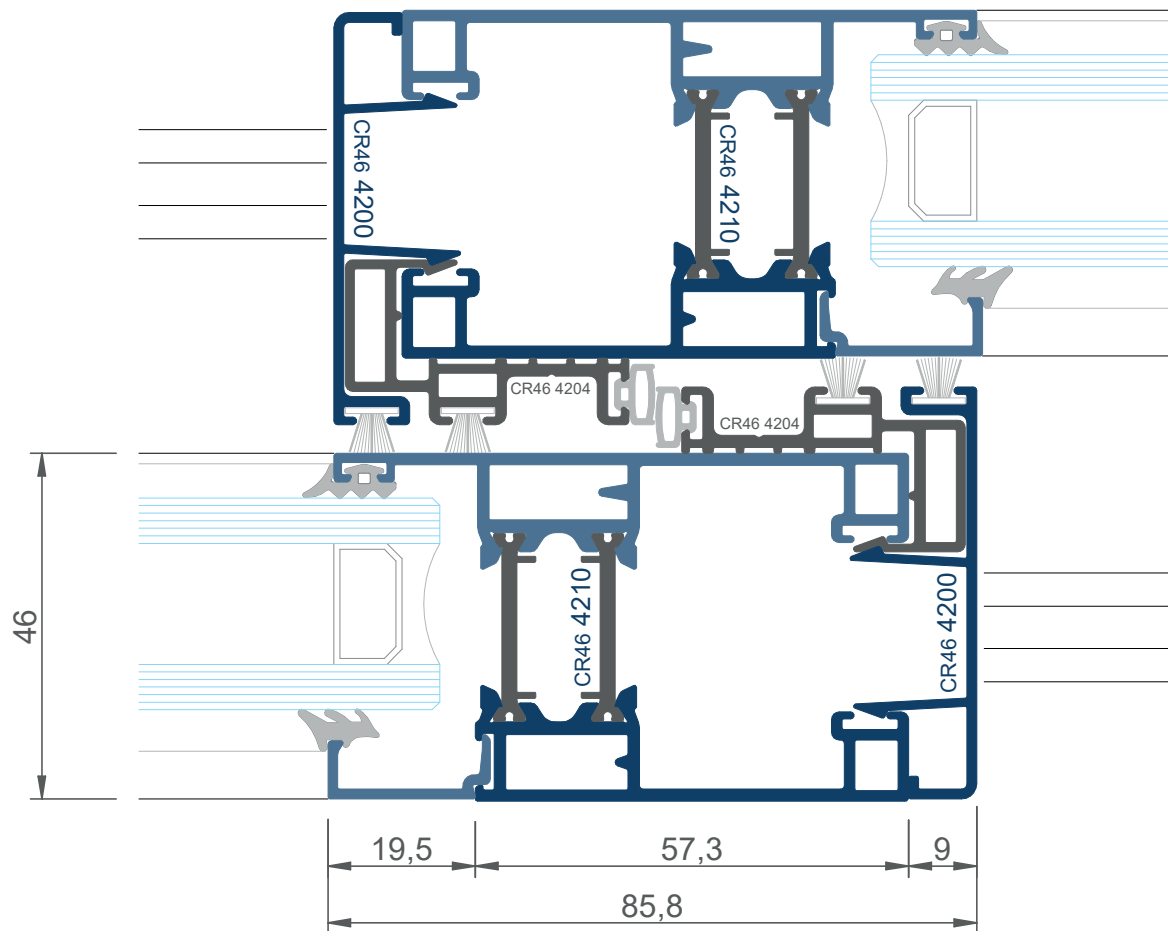
A000 37484 (long 1800)

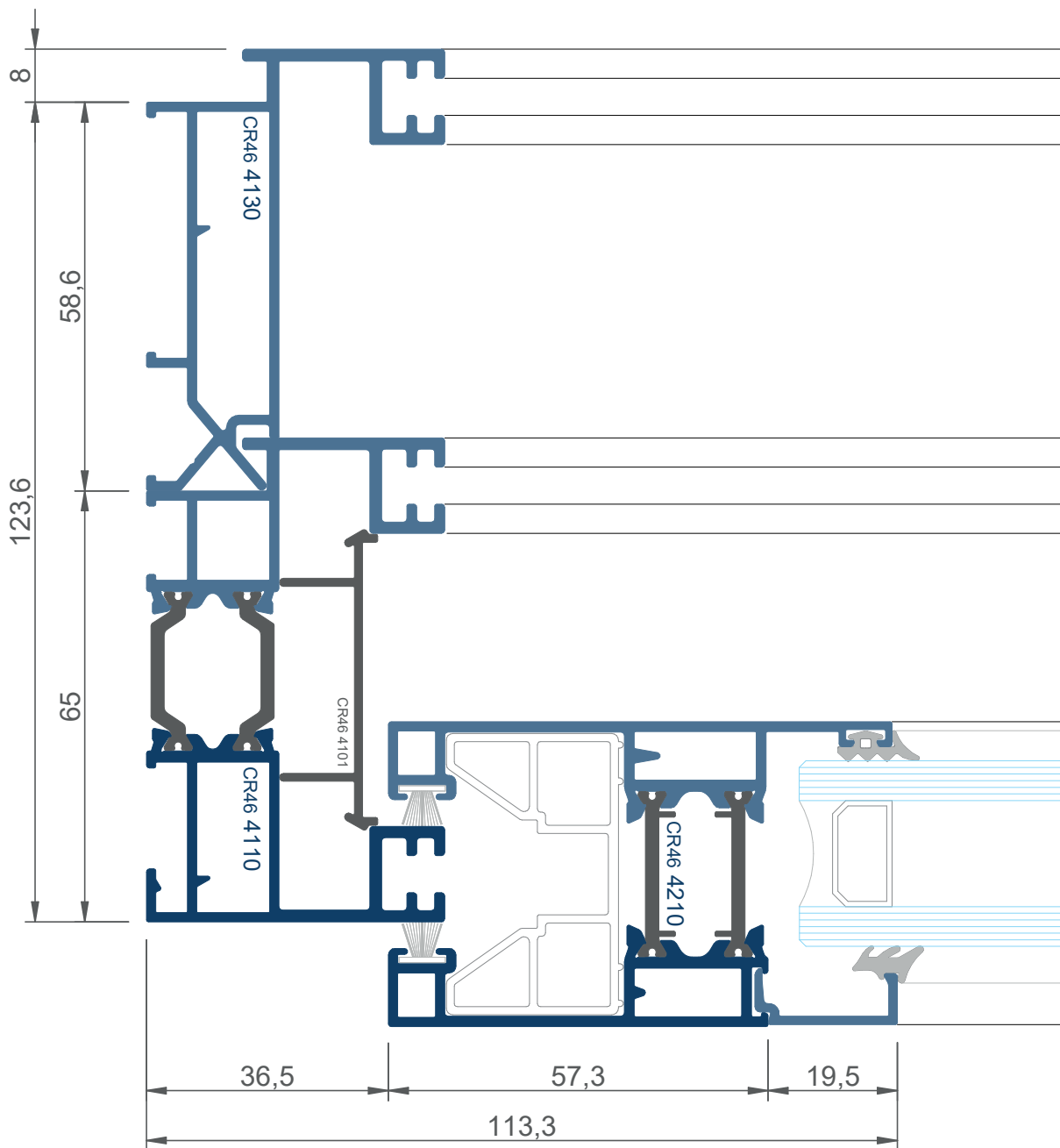
alt minima corred	1000	1400	2200
herraje entrada 7,5	A000 3746	A000 3747	A000 3748
herraje entrada 15	A000 37464	A000 37474	A000 37484
puntos de cierre	2	2	3
perfil apoyo herraje	CR46 3749	CR46 3749	CR46 3749

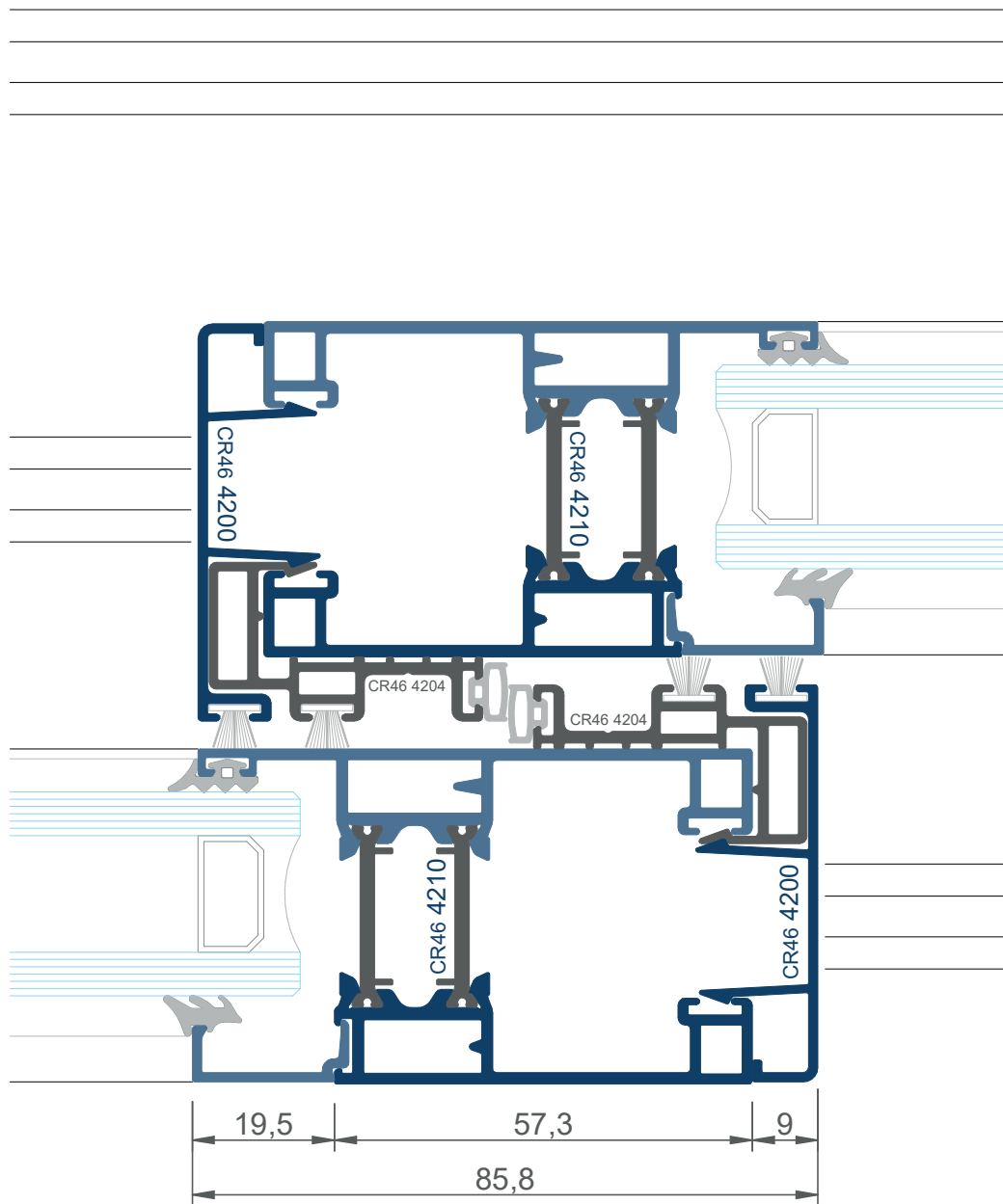


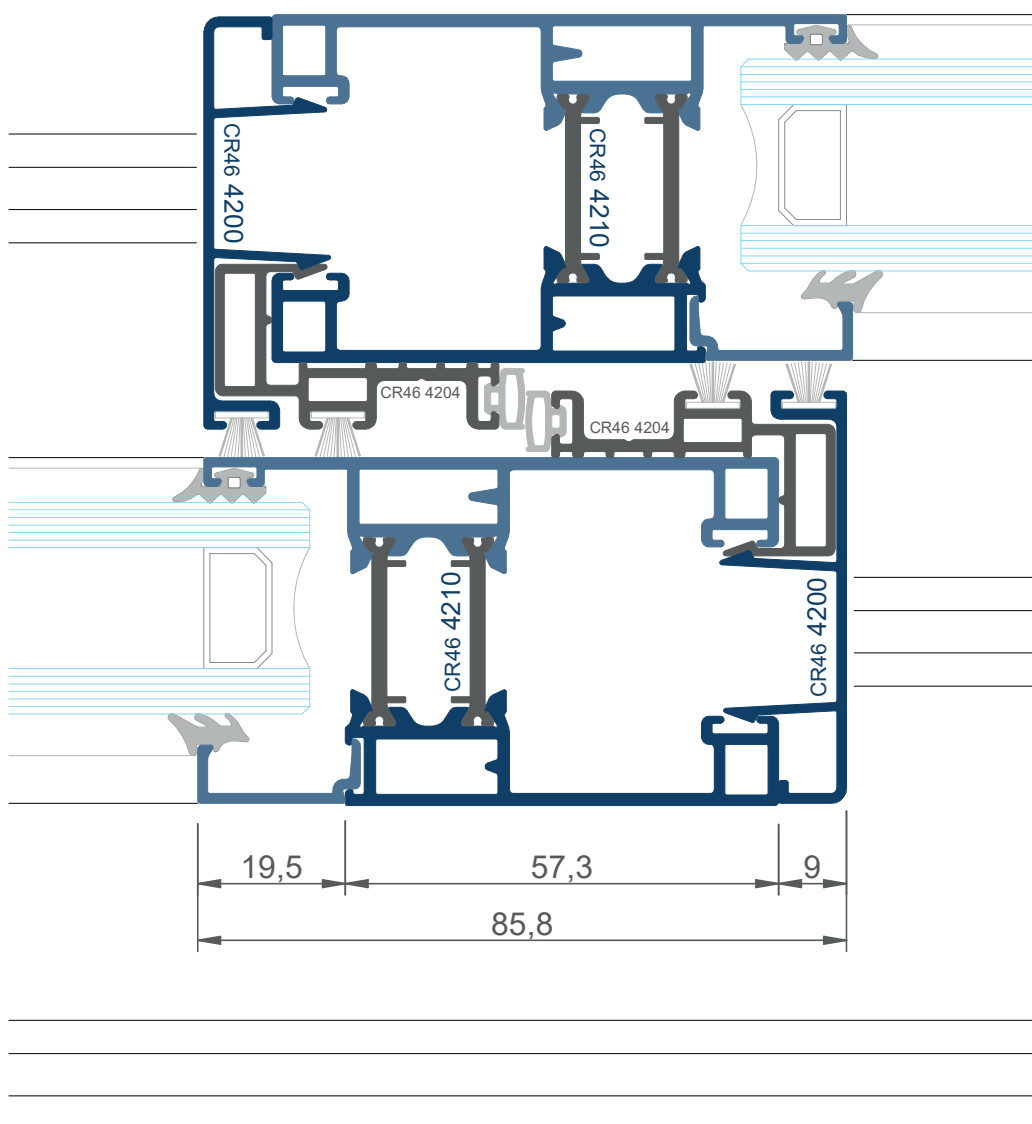


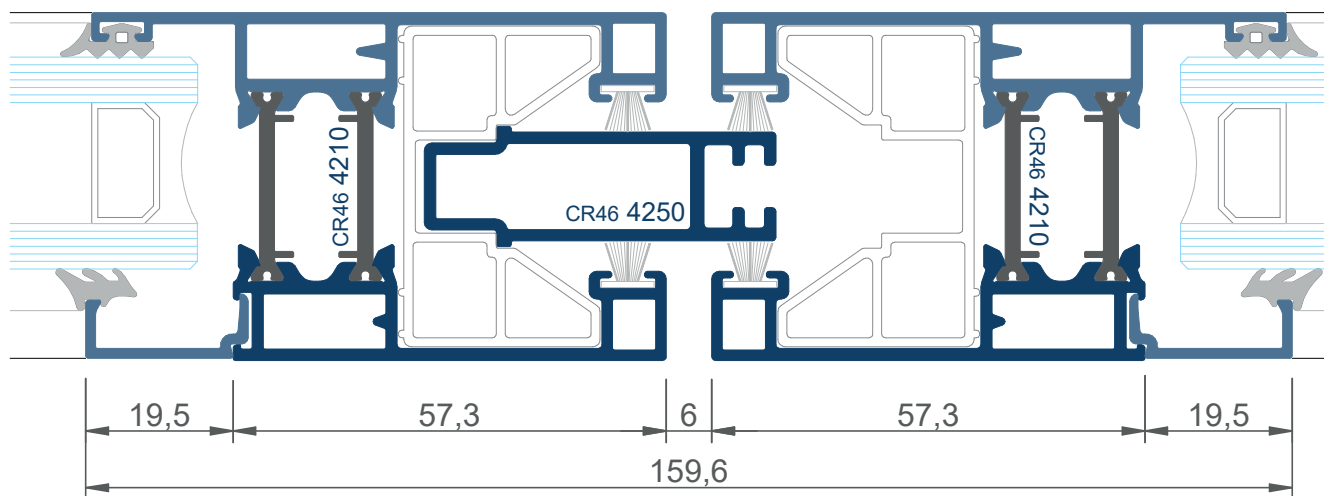


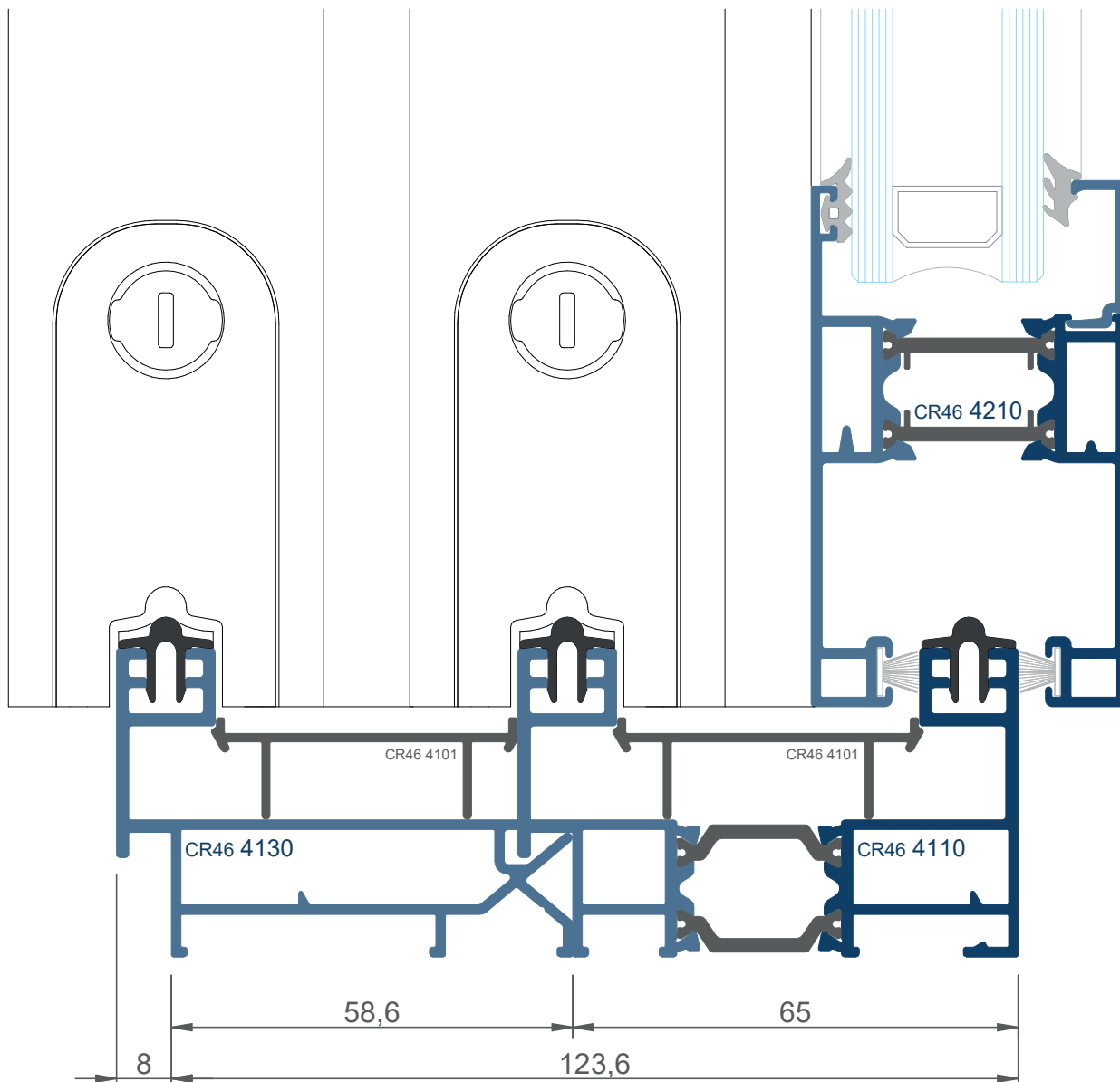


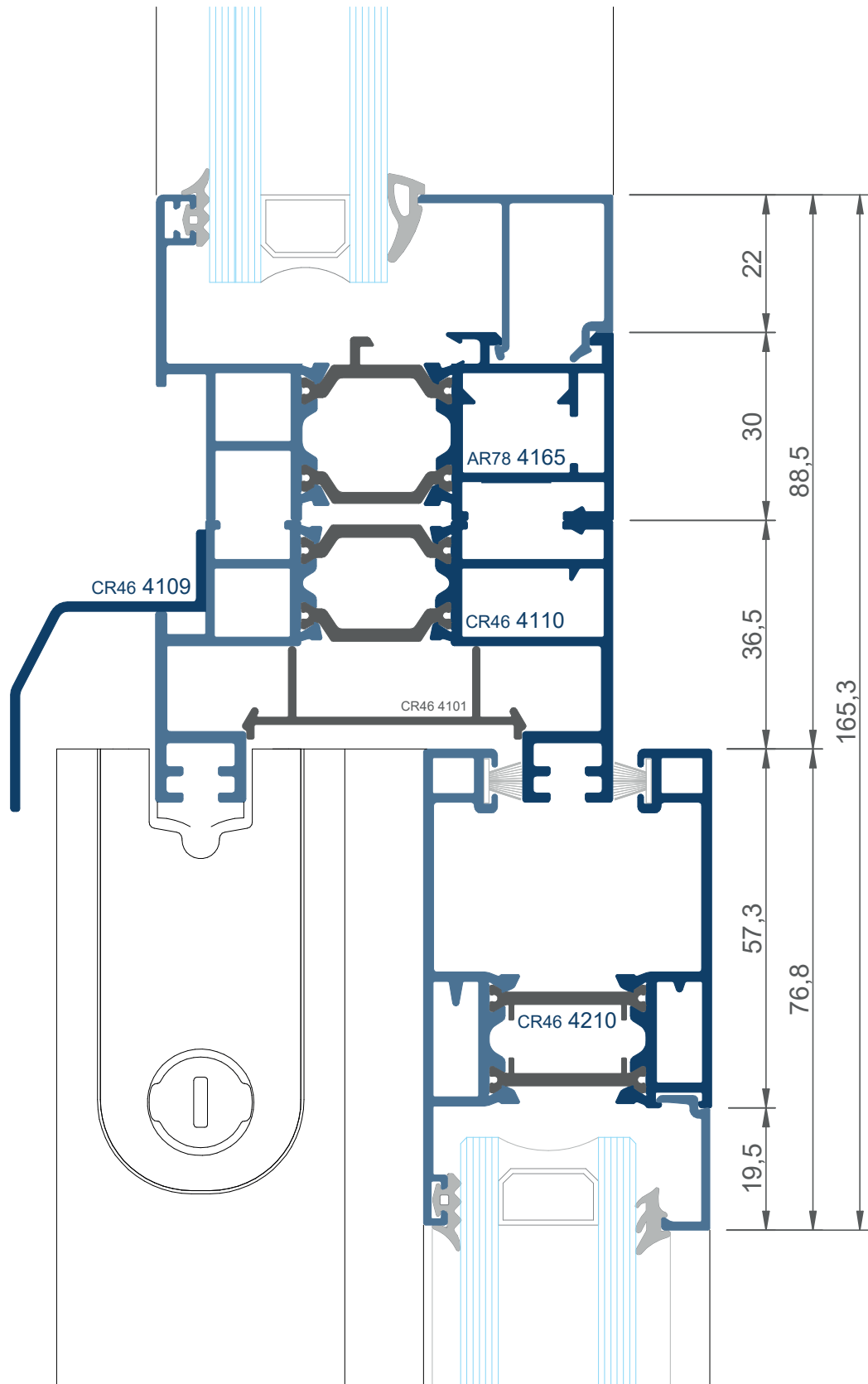


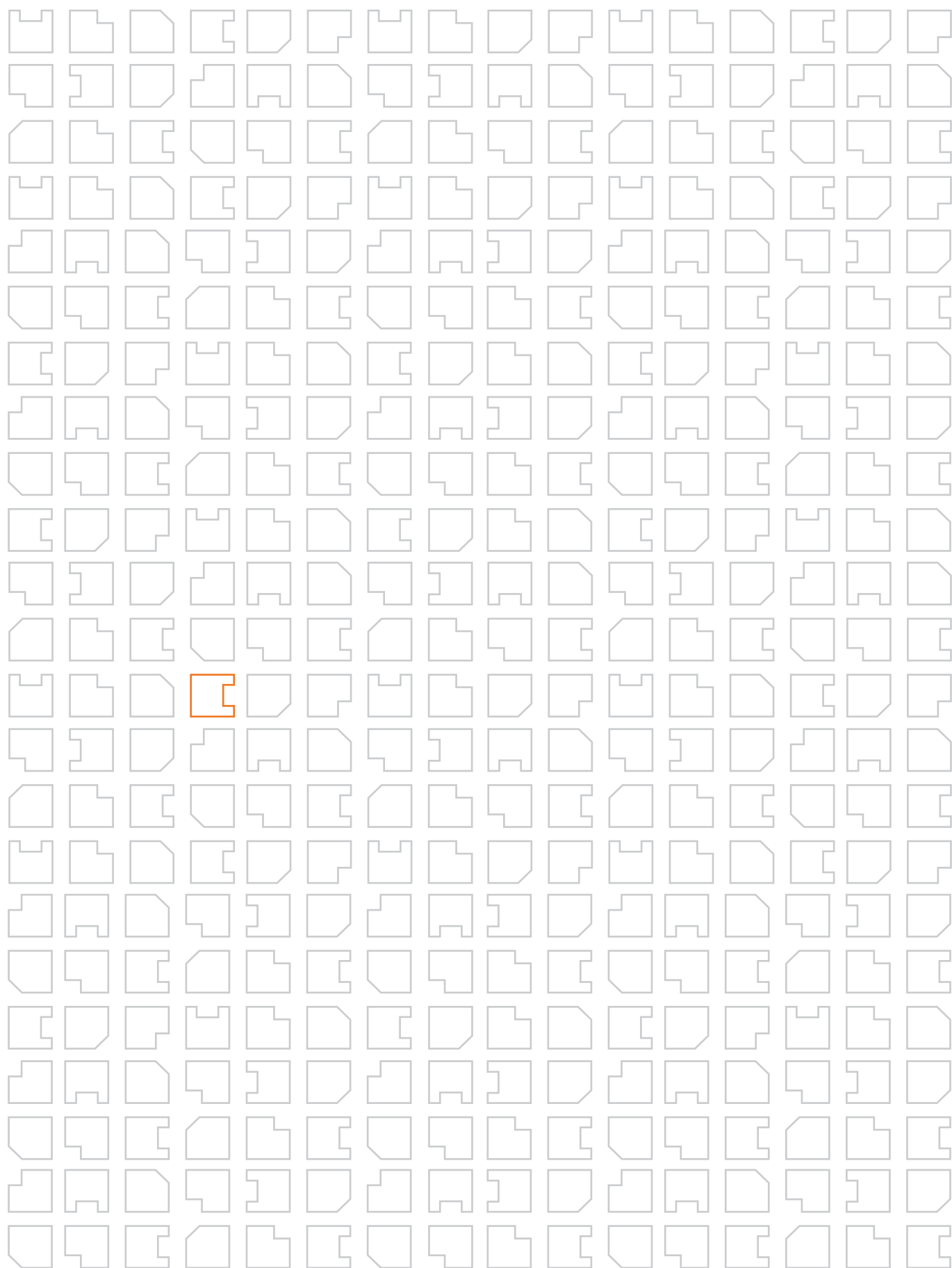


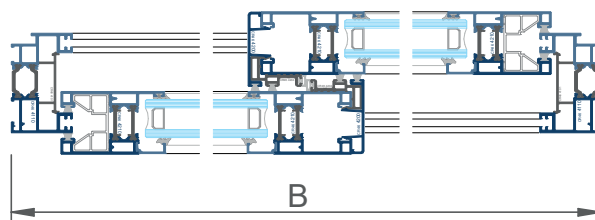
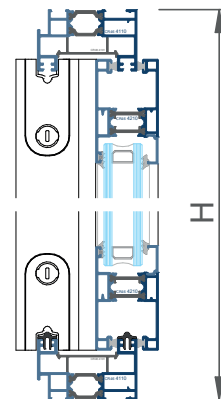
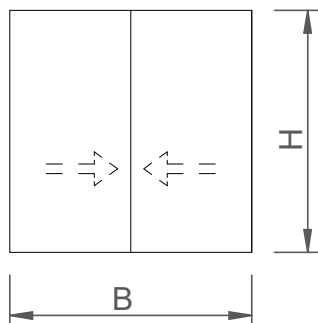






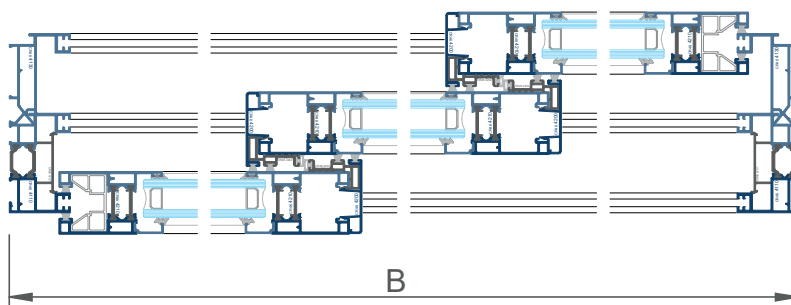
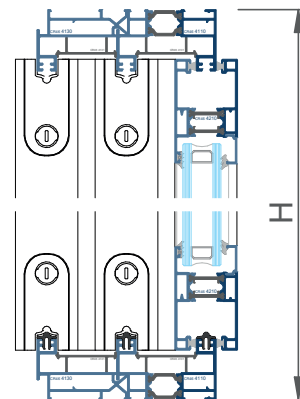
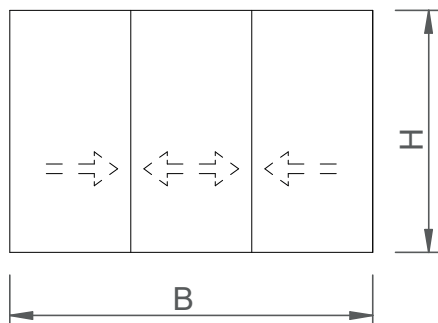






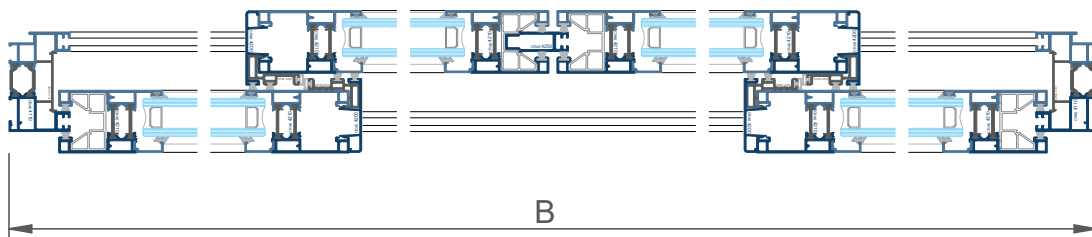
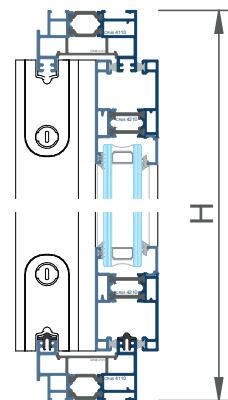
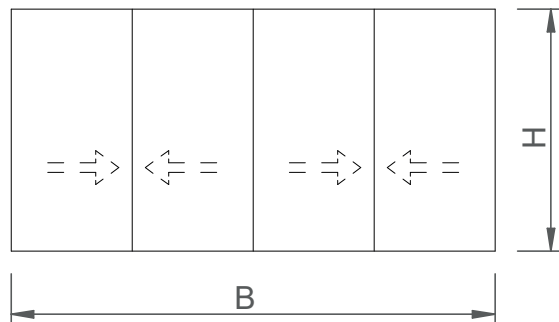
FORMULAS DE CORTE				
		UDS	FORMULA	FORMA
marco horizontal	CR46.4110	2	B	\---/
marco vertical	CR46.4110	2	H	\---/
cubierta marco horizontal	CR46.4101	2	B-40	\---/
cubierta marco vertical	CR46.4101	2	H-40	\---/
rail de rodadura	CR46.4100	2	B-90	---
hoja horizontal	CR46.4210	4	(B-6)/2	\---/
hoja vertical	CR46.4210	4	H-76	\---/
perfil cruce aluminio	CR46.4200	2	H-226	---
perfil cruce termico	CR46.4204	2	H-226	---
junquillo horizontal	CR46.45XX	4	(B-234)/2	---
junquillo vertical	CR46.45XX	4	H-228	---
vidrio		2	(B-258)/2 x H-200	

ACCESORIOS		
		UDS
escuadra interior marco	A000.2110	4
escuadra exterior marco	AR52.2118	4
escuadra hoja	A000.2110	8
escuadra alineacion hoja	CR46.2144	16
escuadra complemento hoja	CR46.2132	16
felpa estanquidad trifin	A000.2365	4B+4H
junta complemento cruce	A000.2320	2H
junta ranura marco	CR46.2301	2B+4H
tope final de carrera	CR46.2312	4
tapa perfil central	CR46.2314	4
cont piezas para CR464204	CR46.2313	2
cortavientos	CR46.2316	2
ruedas	CR46.3784	4
cierre (según modelo)	ver D03 a D05	2



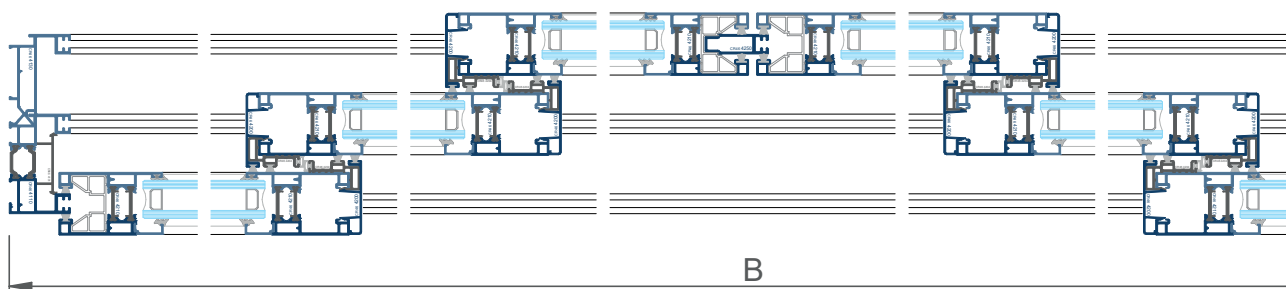
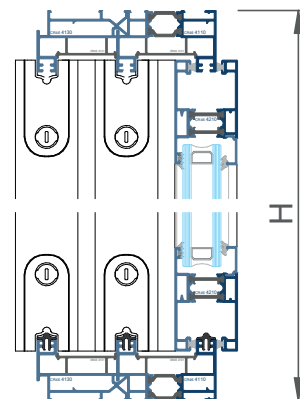
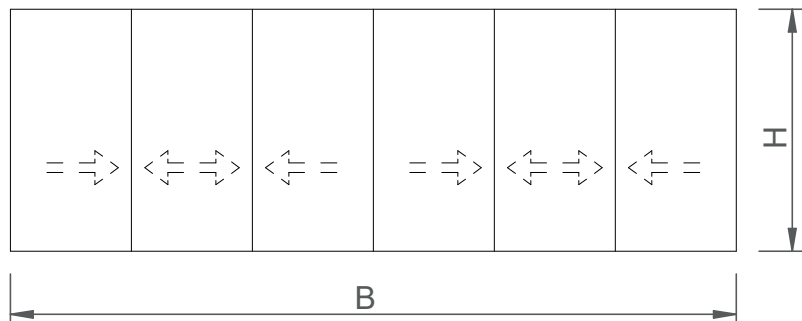
FORMULAS DE CORTE					
		UDS	FORMULA	FORMA	
marco horizontal	CR46.4110	2	B	\---/	
marco vertical	CR46.4110	2	H	\---/	
marco adicional horizontal	CR46.4130	2	B	\---/	
marco adicional vertical	CR46.4130	2	H	\---/	
cubierta marco horizontal	CR46.4101	2	B-40	\---/	
cubierta marco vertical	CR46.4101	2	H-40	\---/	
rail de rodadura	CR46.4100	3	B-90	---	
hoja horizontal	CR46.4210	6	(B+60)/3	\---/	
hoja vertical	CR46.4210	6	H-76	\---/	
perfil cruce aluminio	CR46.4200	4	H-226	---	
perfil cruce termico	CR46.4204	4	H-226	---	
junquillo horizontal	CR46.45XX	6	(B-285)/3	---	
junquillo vertical	CR46.45XX	6	H-228	---	
vidrio		3	(B-324)/3 x H-200		

ACCESORIOS		
		UDS
escuadra interior marco	A000.2110	4
escuadra exterior marco	AR52.2118	8
escuadra hoja	A000.2110	12
escuadra alineacion hoja	CR46.2144	24
escuadra complemento hoja	CR46.2132	24
felpa estanquidad trifin	A000.2365	4B+12H
junta complemento cruce	A000.2320	4H
junta ranura marco	CR46.2301	3B+6H
tope final de carrera	CR46.2312	4
tapa perfil central	CR46.2314	8
cont piezas para CR464204	CR46.2313	8
cortavientos	CR46.2316	2
ruedas	CR46.3784	6
cierre (según modelo)	ver D03 a D05	2



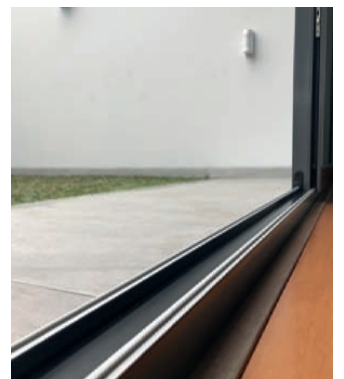
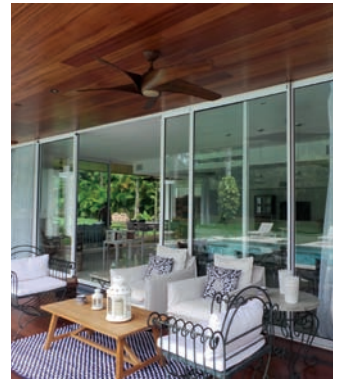
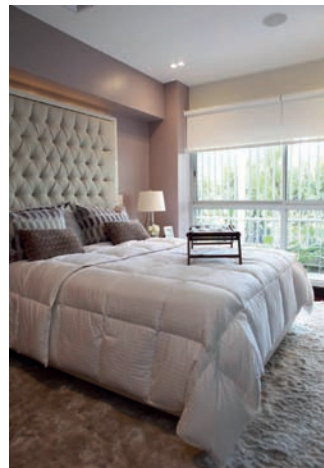
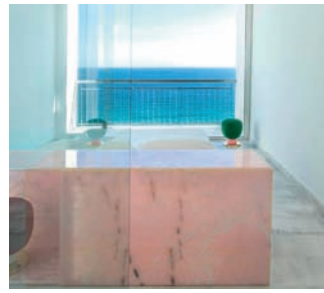
FORMULAS DE CORTE				
		UDS	FORMULA	FORMA
marco horizontal	CR46.4110	2	B	\---/
marco vertical	CR46.4110	2	H	\---/
cubierta marco horizontal	CR46.4101	2	B-40	\---/
cubierta marco vertical	CR46.4101	2	H-40	\---/
rail de rodadura	CR46.4100	2	B-90	---
hoja horizontal	CR46.4210	8	(B+56)/4	\---/
hoja vertical	CR46.4210	8	H-76	\---/
perfil cruce aluminio	CR46.4200	4	H-226	---
perfil cruce termico	CR46.4204	4	H-226	---
junquillo horizontal	CR46.45XX	8	(B-400)/4	---
junquillo vertical	CR46.45XX	8	H-228	---
perfil tres cuatro hojas	CR46.4550	1	H-94	---
vidrio	4	(B-456)/4 x H-200		

ACCESORIOS		
		UDS
escuadra interior marco	A000.2110	4
escuadra exterior marco	AR52.2118	4
escuadra hoja	A000.2110	16
escuadra alineacion hoja	CR46.2144	32
escuadra complemento hoja	CR46.2132	32
felpa estanquidad triffin	A000.2365	4B+16H
junta complemento cruce	A000.2320	4H
junta ranura marco	CR46.2301	2B+4H
tope final de carrera	CR46.2312	8
tapa perfil central	CR46.2314	8
cont piezas para CR464204	CR46.2313	4
cortavientos	CR46.2316	2
ruedas	CR46.3784	8
cierre (según modelo)	ver D03 a D05	3



FORMULAS DE CORTE				
		UDS	FORMULA	FORMA
marco horizontal	CR46.4110	2	B	\---/
marco vertical	CR46.4110	2	H	\---/
marco adicional horizontal	CR46.4130	2	B	\---/
marco adicional vertical	CR46.4130	2	H	\---/
cubierta marco horizontal	CR46.4101	2	B-40	\---/
cubierta marco vertical	CR46.4101	2	H-40	\---/
rail de rodadura	CR46.4100	3	B-90	---
hoja horizontal	CR46.4210	12	$(B+189)/6$	\---/
hoja vertical	CR46.4210	12	H-76	\---/
perfil cruce aluminio	CR46.4200	8	H-226	---
perfil cruce termico	CR46.4204	8	H-226	---
junquillo horizontal	CR46.45XX	12	$(B-500)/6$	---
junquillo vertical	CR46.45XX	12	H-228	---
junquillo vertical	CR46.4250	1	H-94	---
vidrio		6	$(B-555)/6 \times H-200$	

ACCESORIOS		
		UDS
escuadra interior marco	A000.2110	4
escuadra exterior marco	AR52.2118	8
escuadra hoja	A000.2110	24
escuadra alineacion hoja	CR46.2144	48
escuadra complemento hoja	CR46.2132	48
felpa estanquidad trifin	A000.2365	$4B+12H$
junta complemento cruce	A000.2320	$8H$
junta ranura marco	CR46.2301	$3B+6H$
tope final de carrera	CR46.2312	8
tapa perfil central	CR46.2314	16
cont piezas para CR464204	CR46.2313	8
cortavientos	CR46.2316	4
ruedas	CR46.3784	12
cierre (según modelo)	ver D03 a D05	3



Obras de Thermia Barcelona

THERMIA[®]

B A R C E L O N A

Ventanas para vivir mejor

Sede Central en Barcelona

C/ Narcís Monturiol, 34
08192 Sant Quirze del Vallès
Barcelona (España)
Tel. +34 937 121 237
contacto@thermiabarcelona.com
Síguenos en   

Delegación Área Andina

Los Telares, 289
Urbanización Industrial Vulcano
Ate, Lima (Perú)
Tel. +51-1-7197649

Showrooms

Barcelona

Narcís Monturiol, 34
08192 Sant Quirze Valles
Tel. +34 937 121 237

Lima

Paseo de la República, 3583
2o. Piso - San Isidro
Tel. +51-1-7197649

Girona

Carrer Sant Jordi, 2
Local 4 - Sarrià de Ter
Tel. +34 937 121 237

THERMIABARCELONA.COM