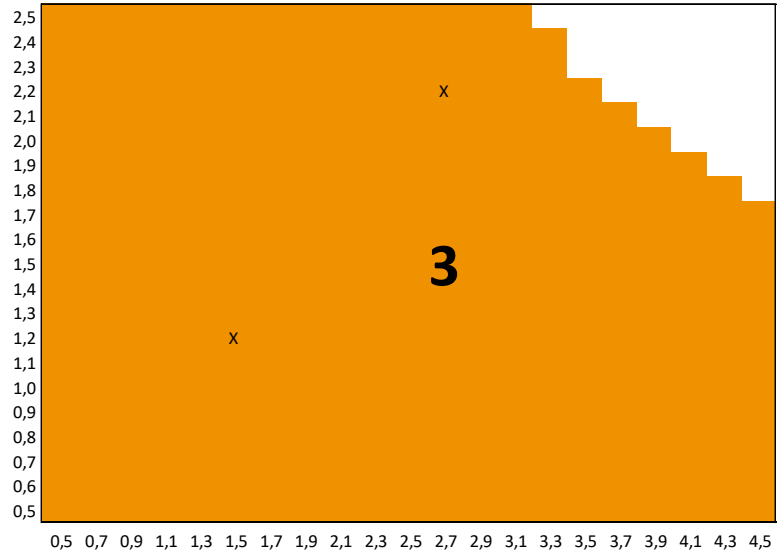




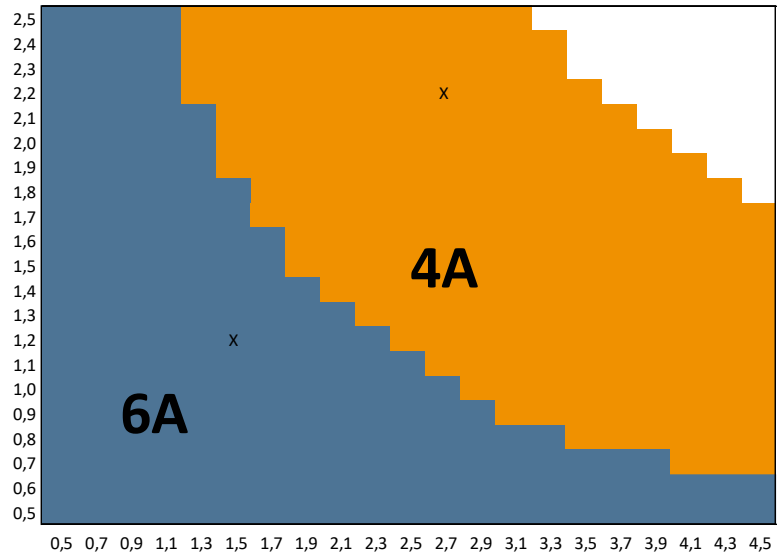
**THERMIA® CR31**  
Ventanas para unir interior y exterior.

**Ventanas para vivir mejor**

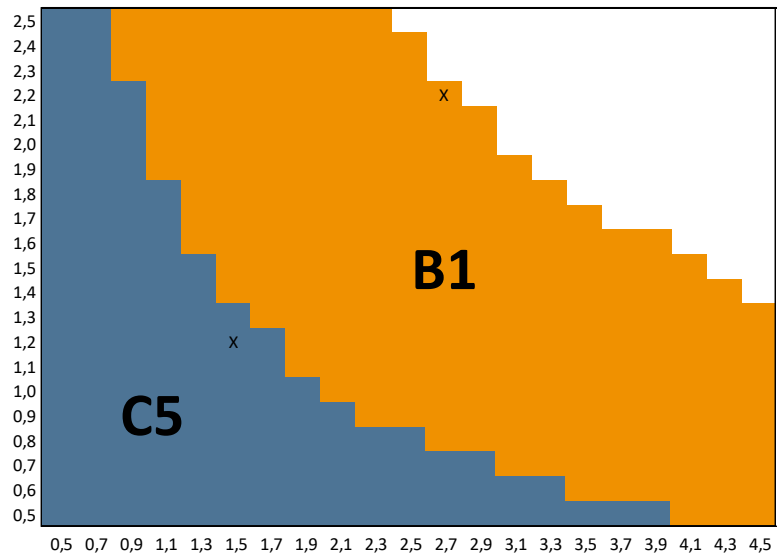
PERMEABILIDAD AL AIRE según EN 12207 - Marcado CE según EN 14351-1:2006 (E.1)



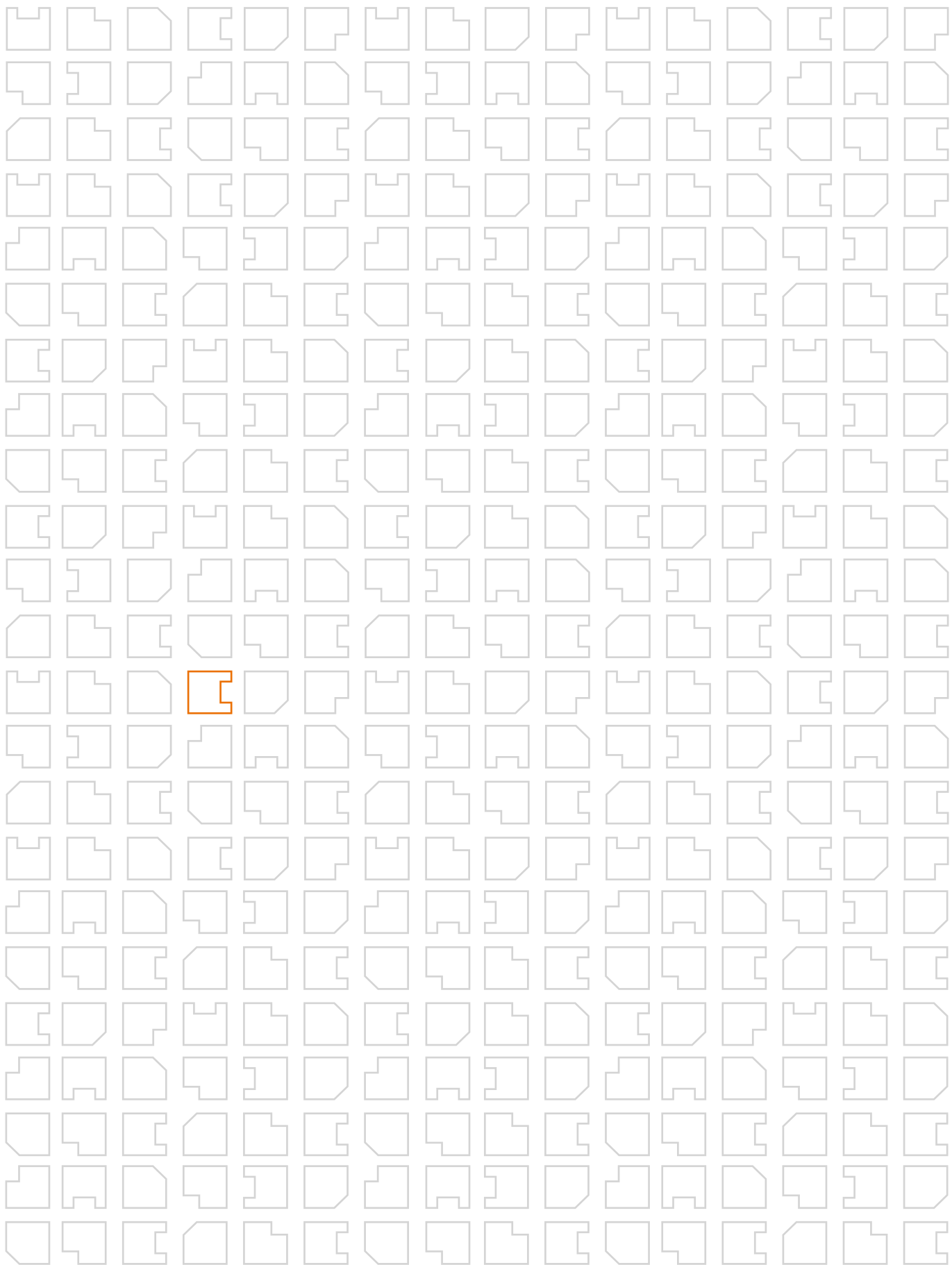
ESTANQUIDAD AL AGUA según EN 12208 - Marcado CE según EN 14351-1:2006 (E.1)

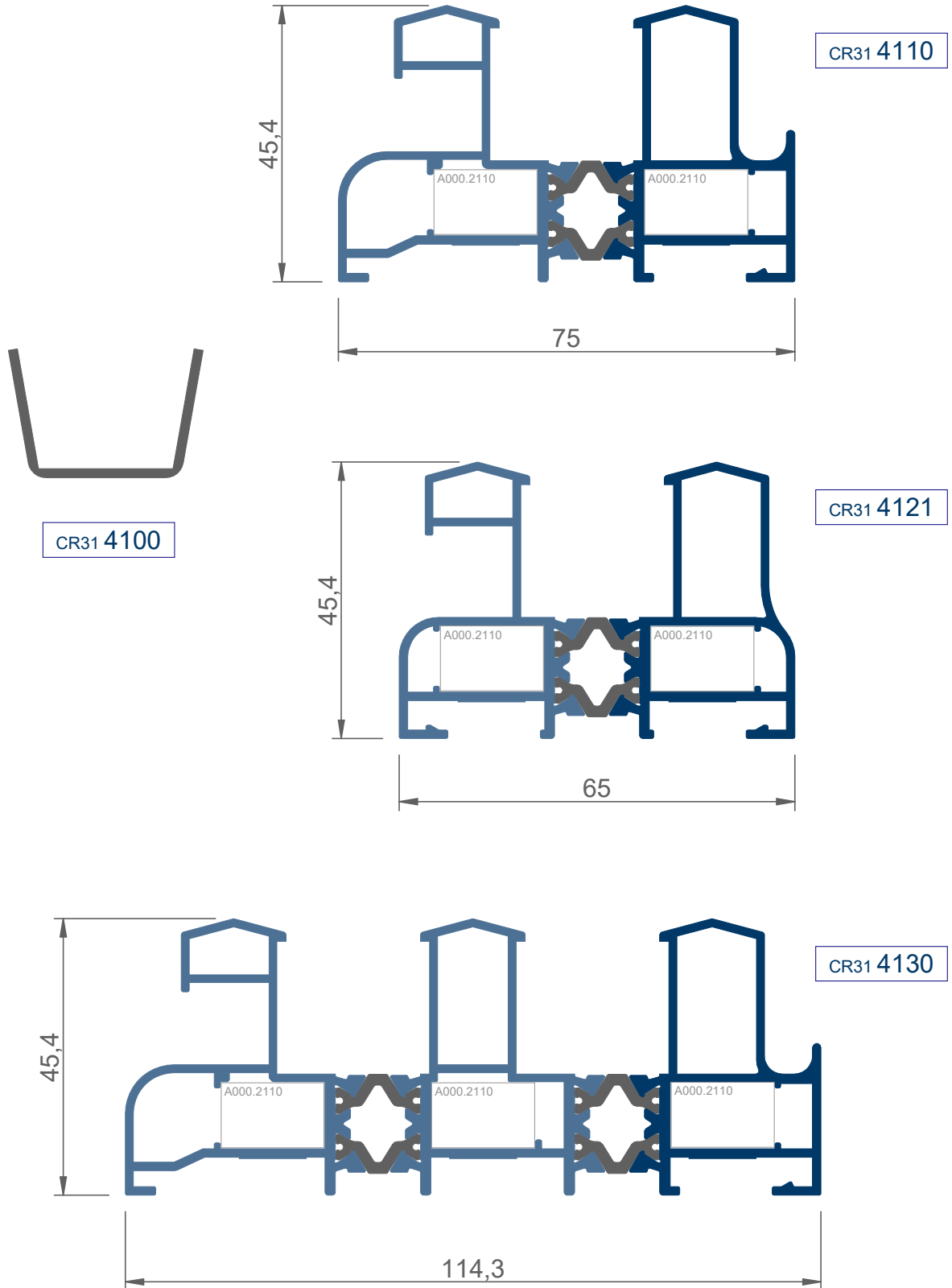


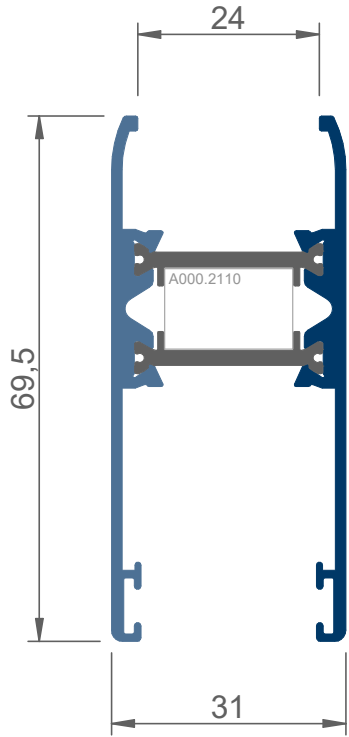
RESISTENCIA AL VIENTO según EN 12210 - Marcado CE según EN 14351-1:2006 (E.1)



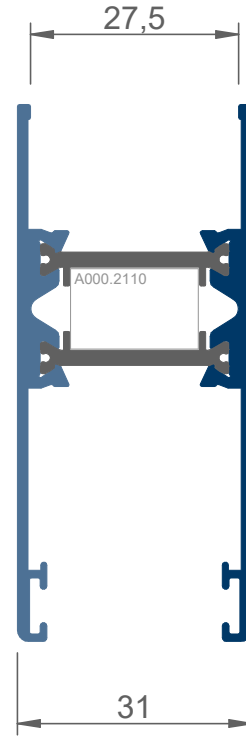
Resultados obtenidos de los informes según ensayos internos, y en base al Anexo E de la norma EN 14351-1:2006.



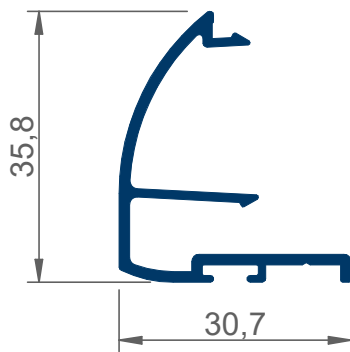




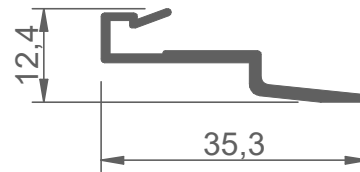
CR31 4210



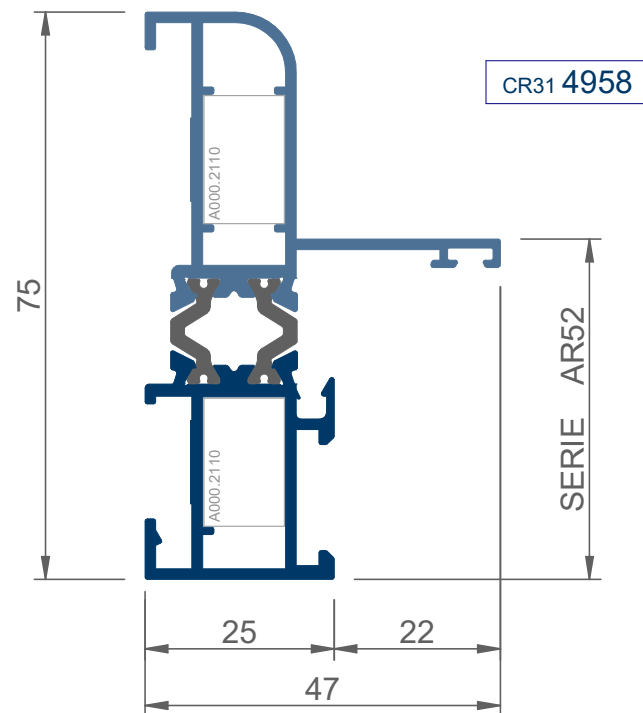
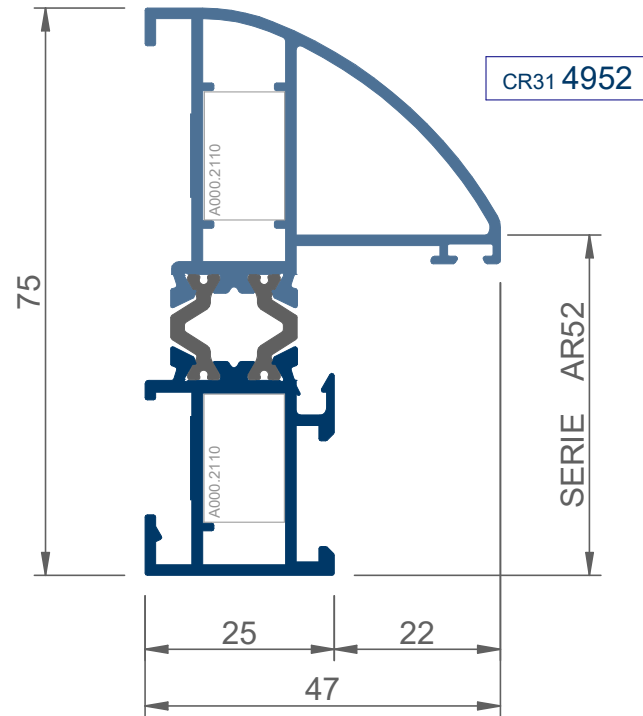
CR31 4211

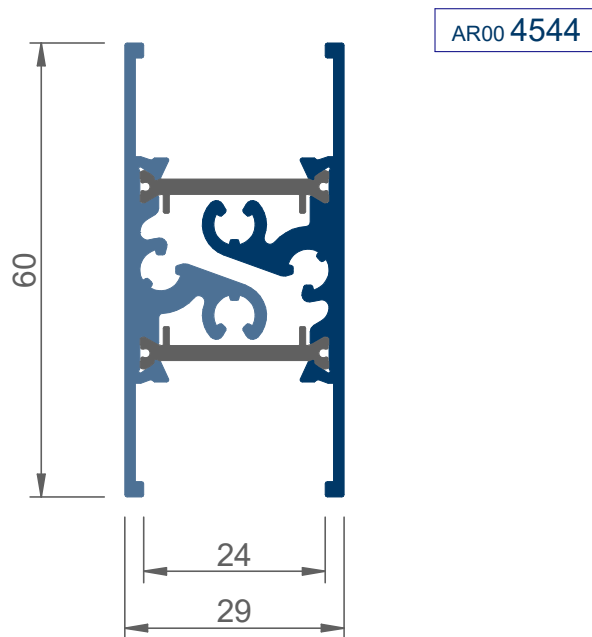
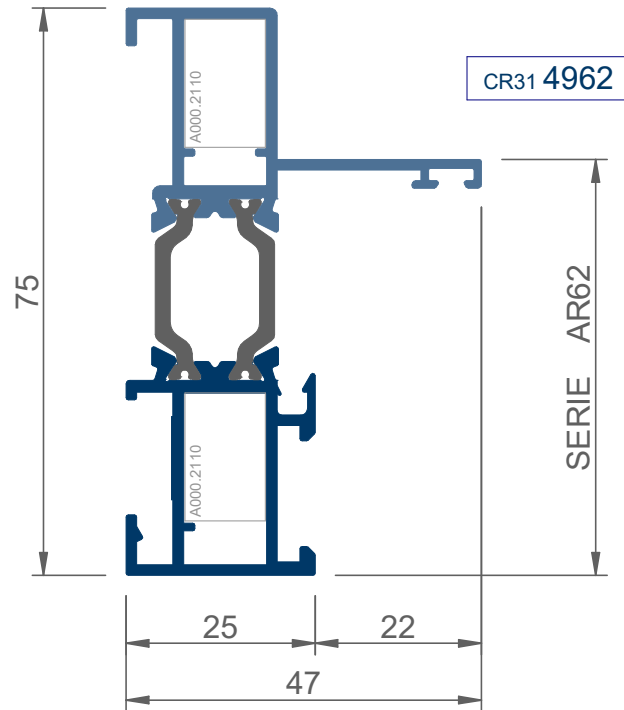


CR31 4203

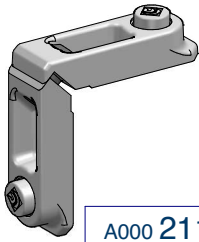


CR31 4204



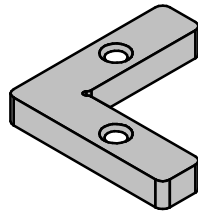






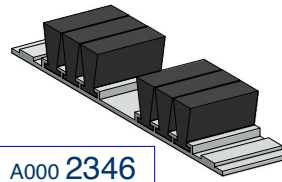
A000 2110

escuadra



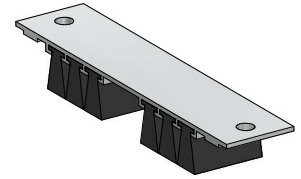
A00K 2110

escuadra marco  
kiss 2110



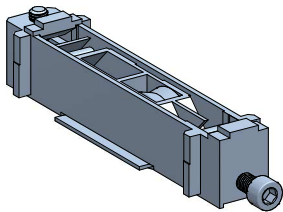
A000 2346

cortavientos inferior  
adhesivo



A000 2347

cortavientos superior  
desmontable

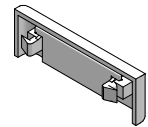


A000 3752

rueda simple regulable  
(agujas) 60 kg/hoja

A000 2300

tapón deflector  
con lámina

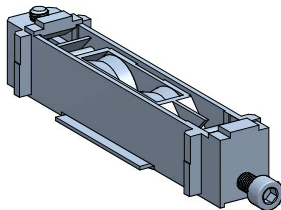


A000 3782

rueda simple regulable  
(agujas Pabose) 80 kg/hoja

A000 2376

cepillo estanquidad  
7x6 con lámina central



A000 3754

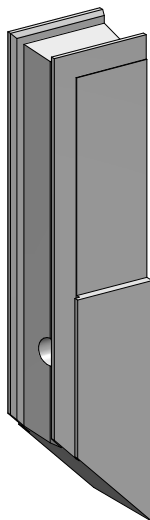
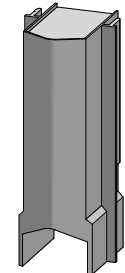
rueda tándem regulable  
(bolas) 140 kg/hoja

A000 3784

rueda tándem regulable  
(agujas Pabose) 160 kg/hoja

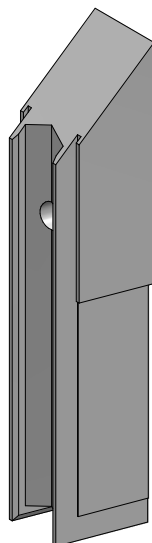
CF31 2350

tapa terminal  
perfil CF31.4250



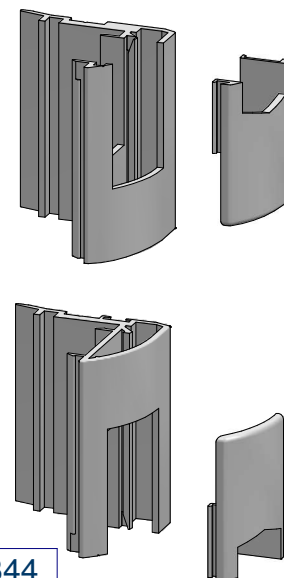
A000 2345

topes final carrera y  
antielevación una hoja



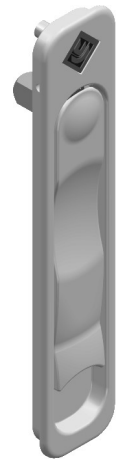
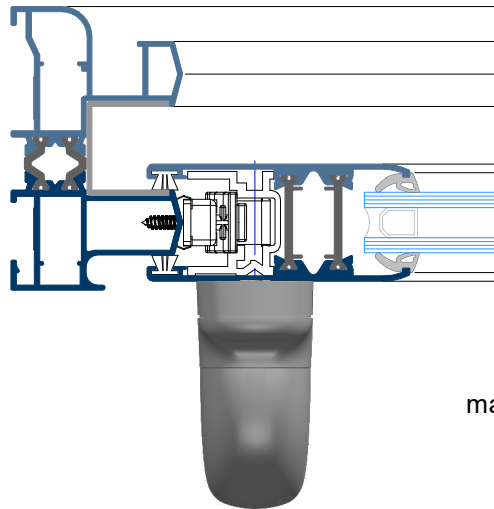
A000 2344

kit tapas centrales hoja  
perfil cruce CF31.4201  
(no utilizable en perfil CF31.4205)

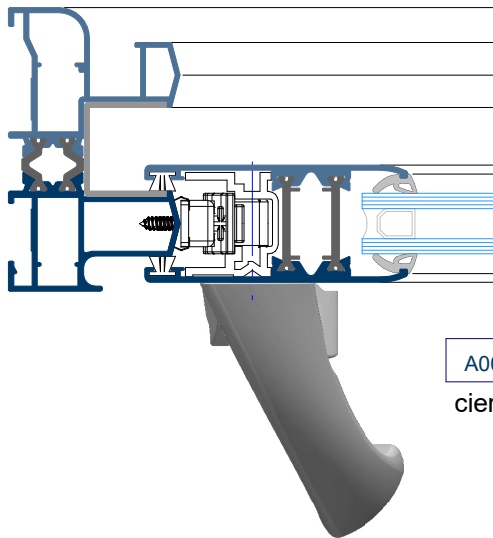




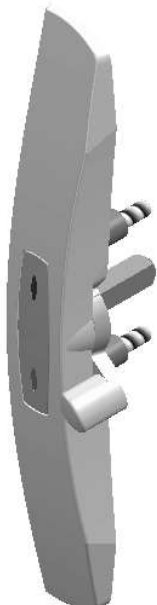
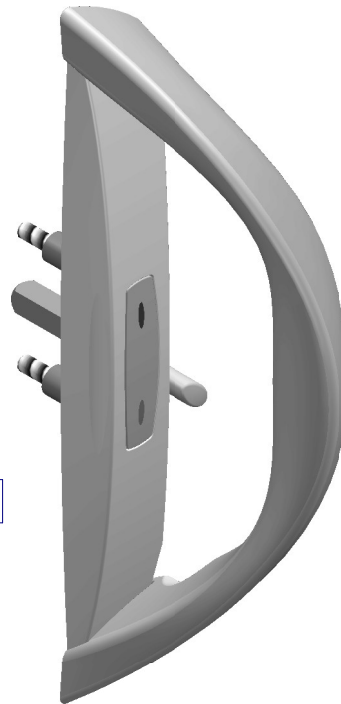
A000 3740  
manilla cremona



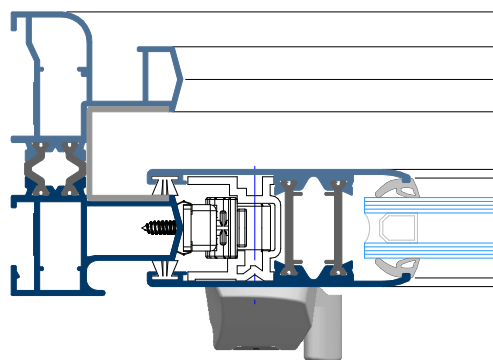
A000 3751  
manilla hoja secundaria

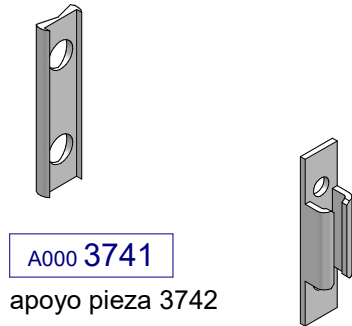


A000 3770  
cierres tirador



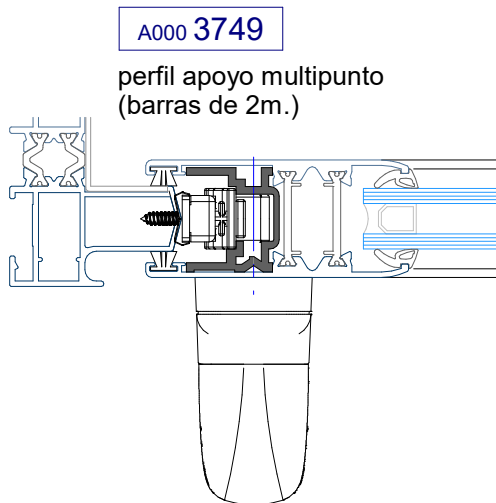
A000 3771  
cierres base





A000 3741  
apoyo pieza 3742

A000 3742  
cerradero multipunto



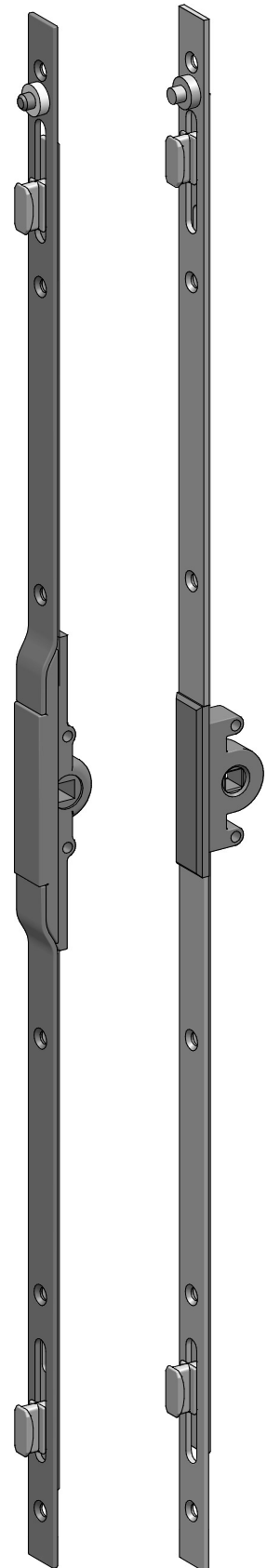
A000 3749  
perfil apoyo multipunto  
(barras de 2m.)

**ENTRADA 7,5mm**

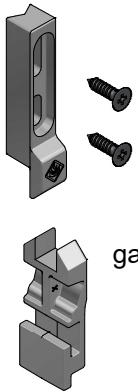
- A000 3746 (long 600)
- A000 3747 (long 1000)
- A000 3748 (long 1800)

**ENTRADA 15mm**

- A000 37464 (long 600)
- A000 37474 (long 1000)
- A000 37484 (long 1800)

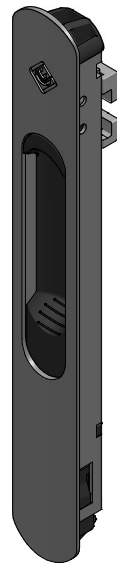


alt minima corred	1000	1400	2200
herraje entrada 7,5	A000 3746	A000 3747	A000 3748
herraje entrada 15	A000 37464	A000 37474	A000 37484
puntos de cierre	2	2	3
cerradero	A000 3742 (2uds)	A000 3742 (2uds)	A000 3742 (3uds)
calce cerradero	A000 3741 (2uds)	A000 3741 (2uds)	A000 3741 (3uds)
cremona	A000 3740 (1 ud)	A000 3740 (1 ud)	A000 3740 (1 ud)
perfil apoyo herraje	A000 3749	A000 3749	A000 3749



A000 3710

gancho y cerradero



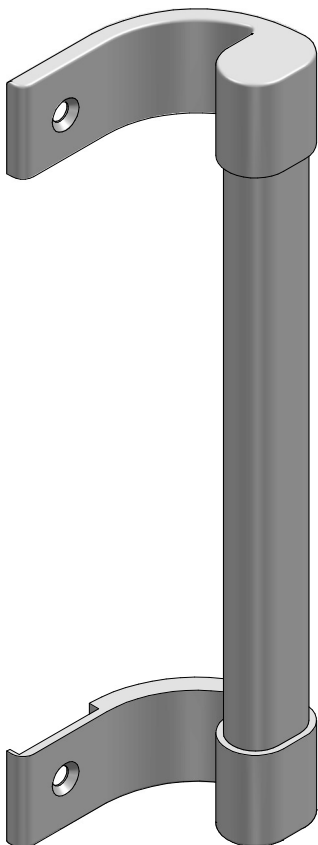
A000 3732

cierre corto



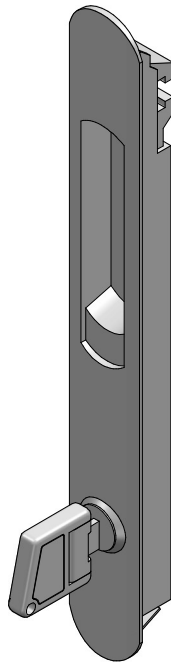
A000 3734

cierre base



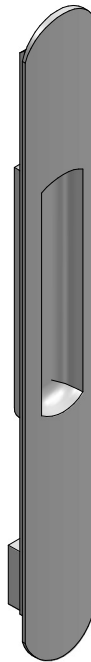
A000 3731

tirador universal



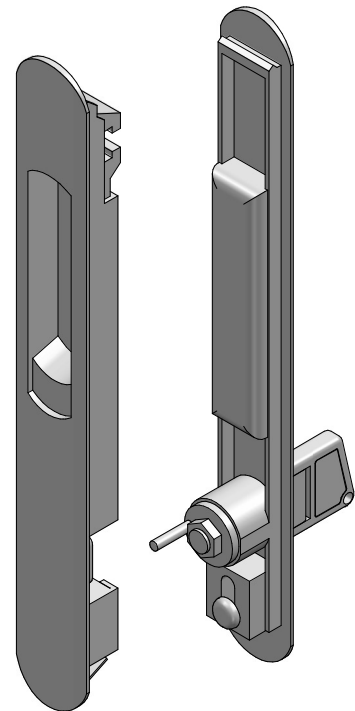
A000 3735

cierre con llave



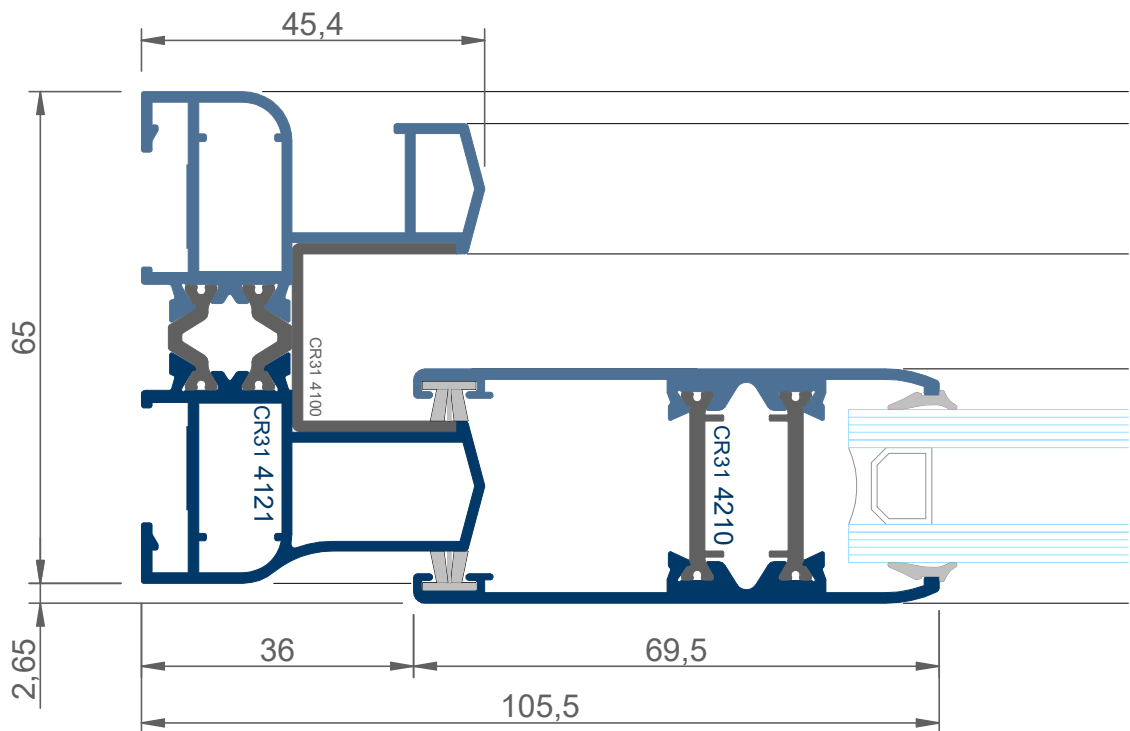
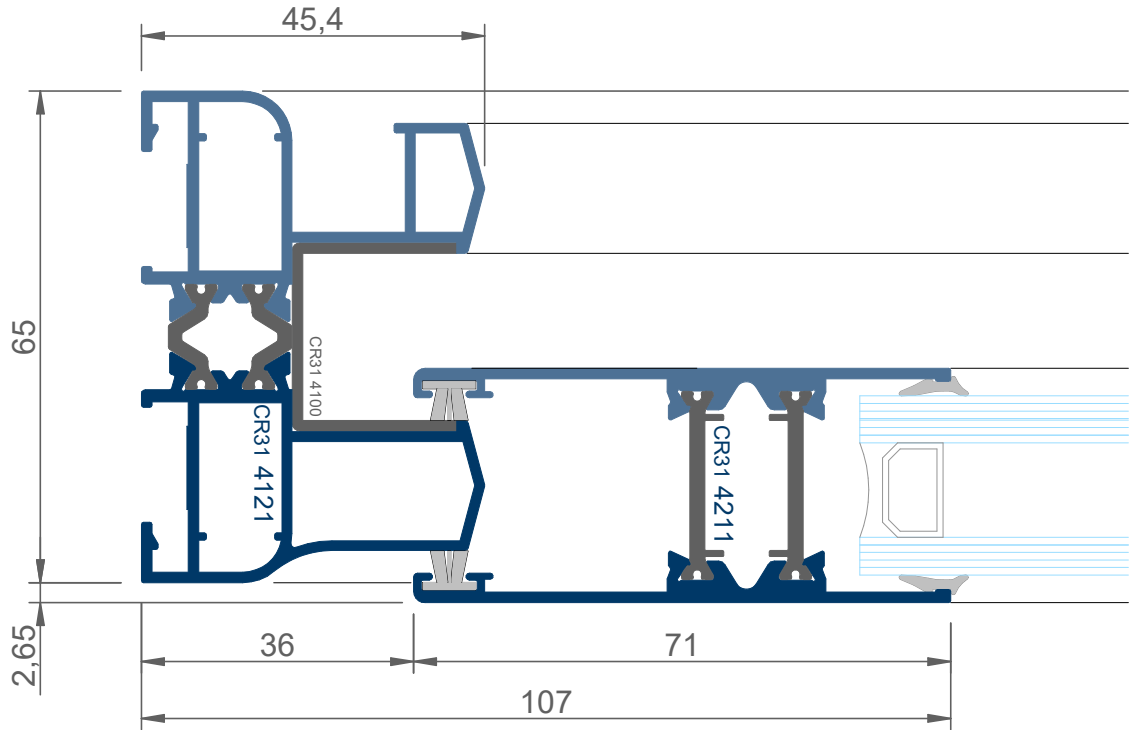
A000 3738

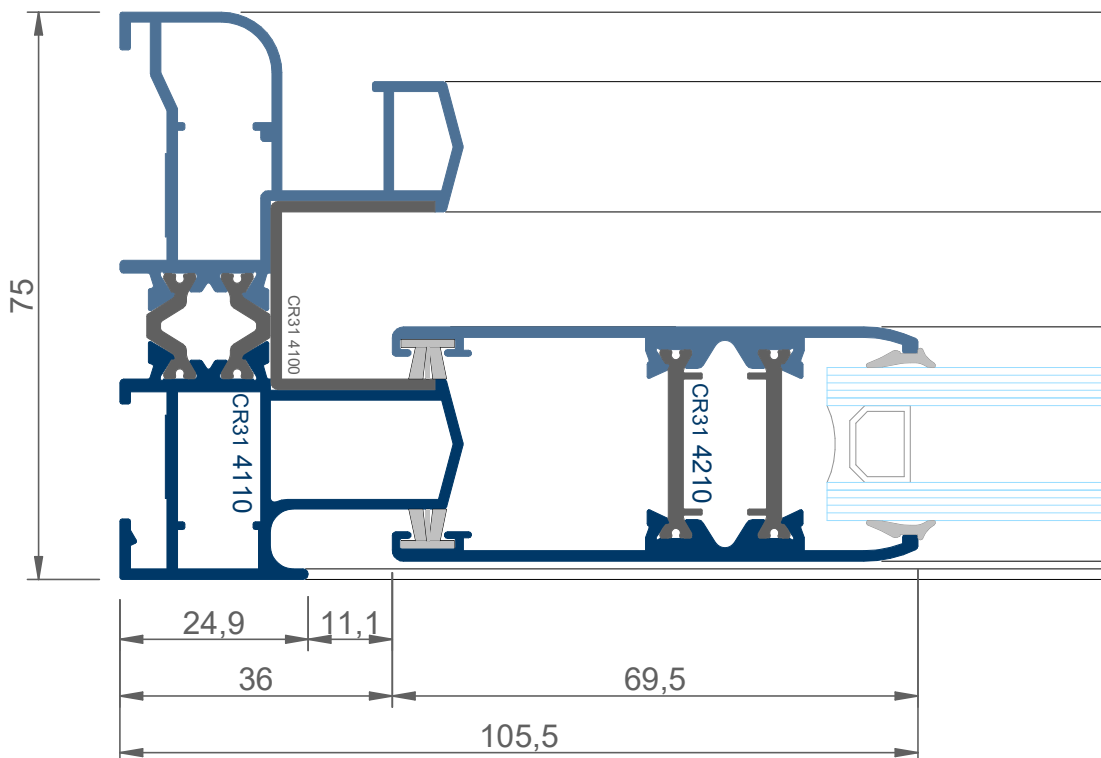
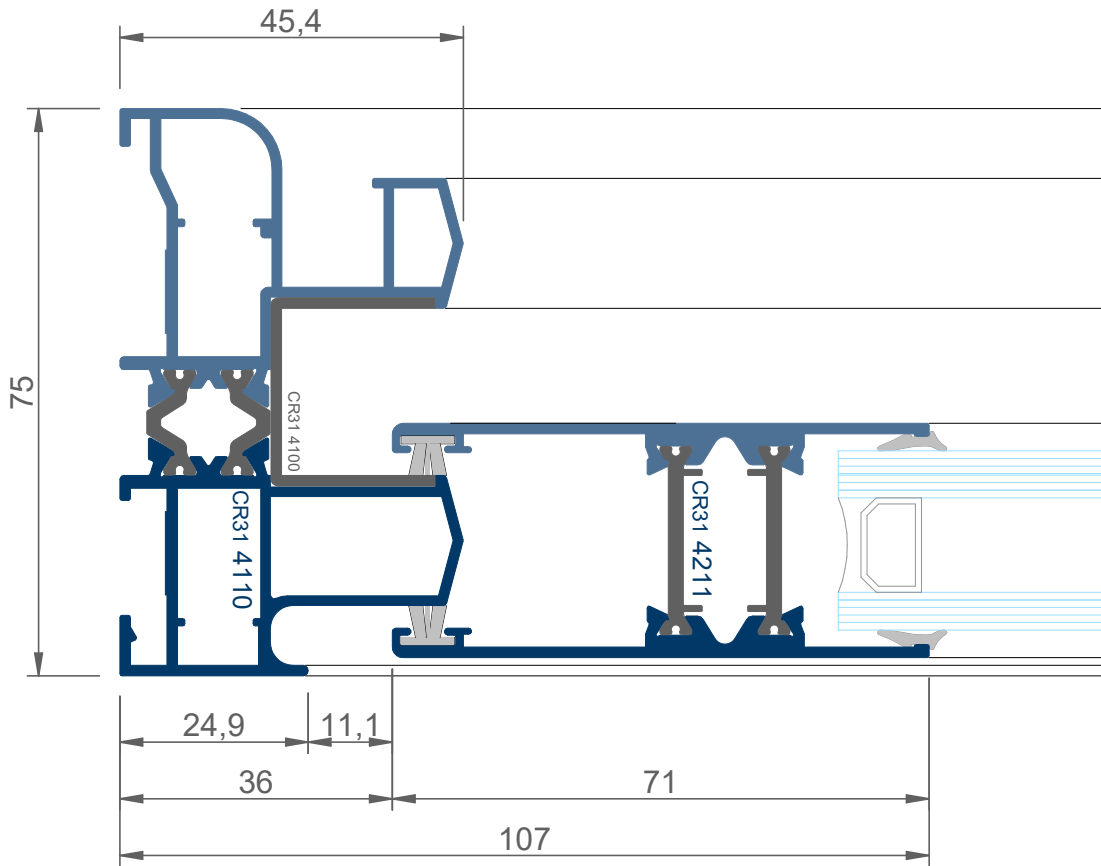
uñero ext

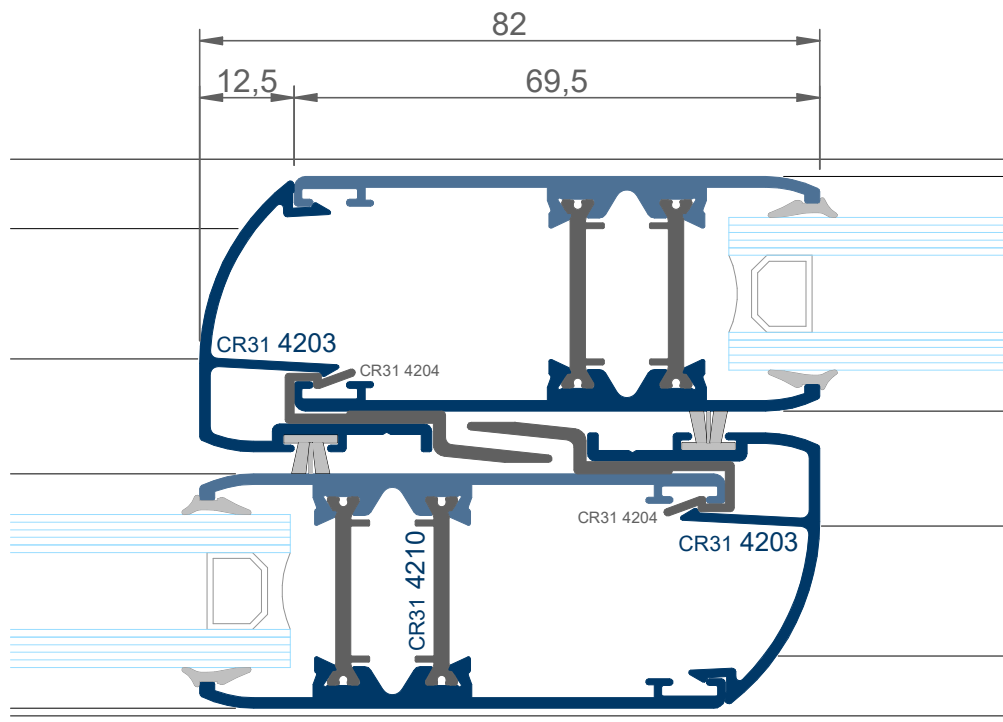
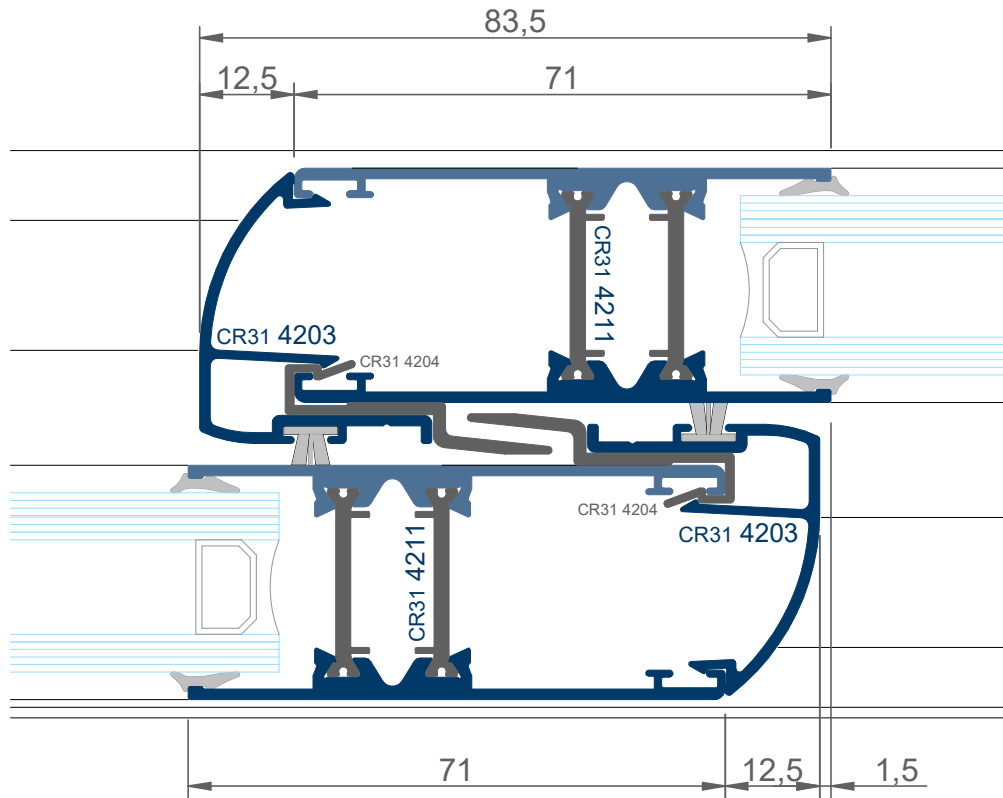


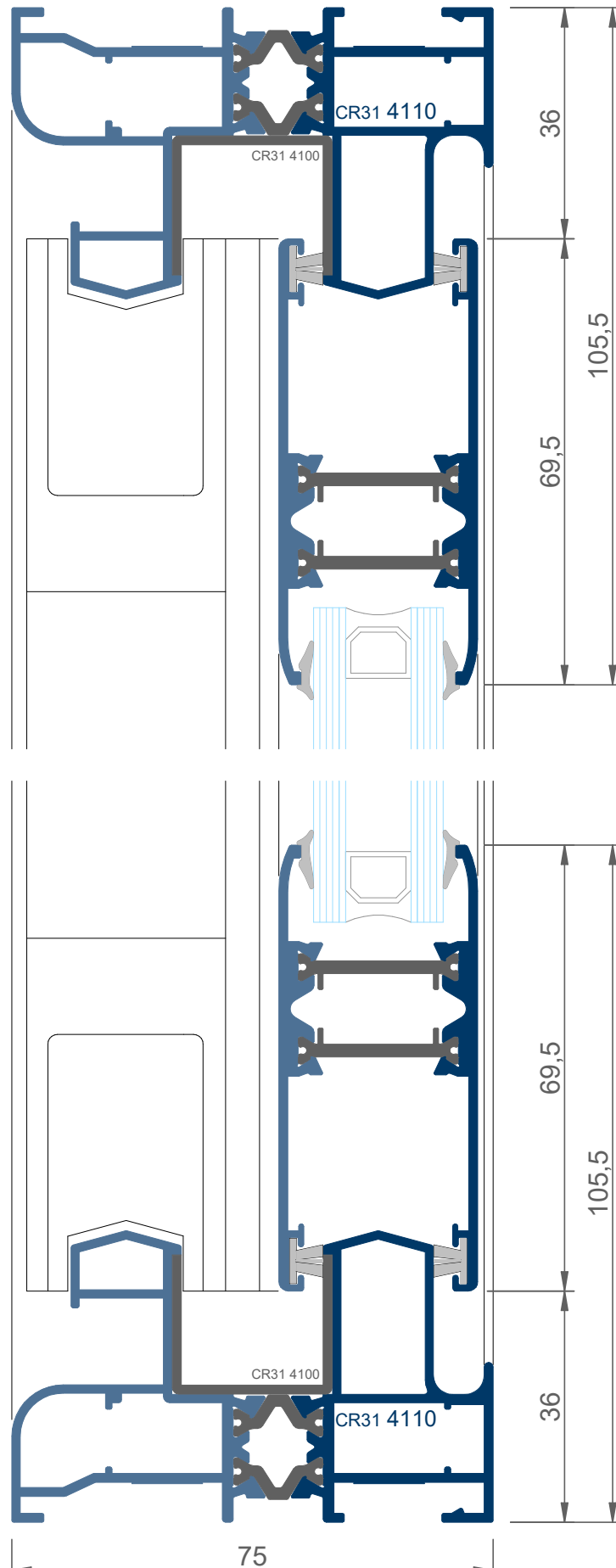
A000 3736

cierre con llave ext

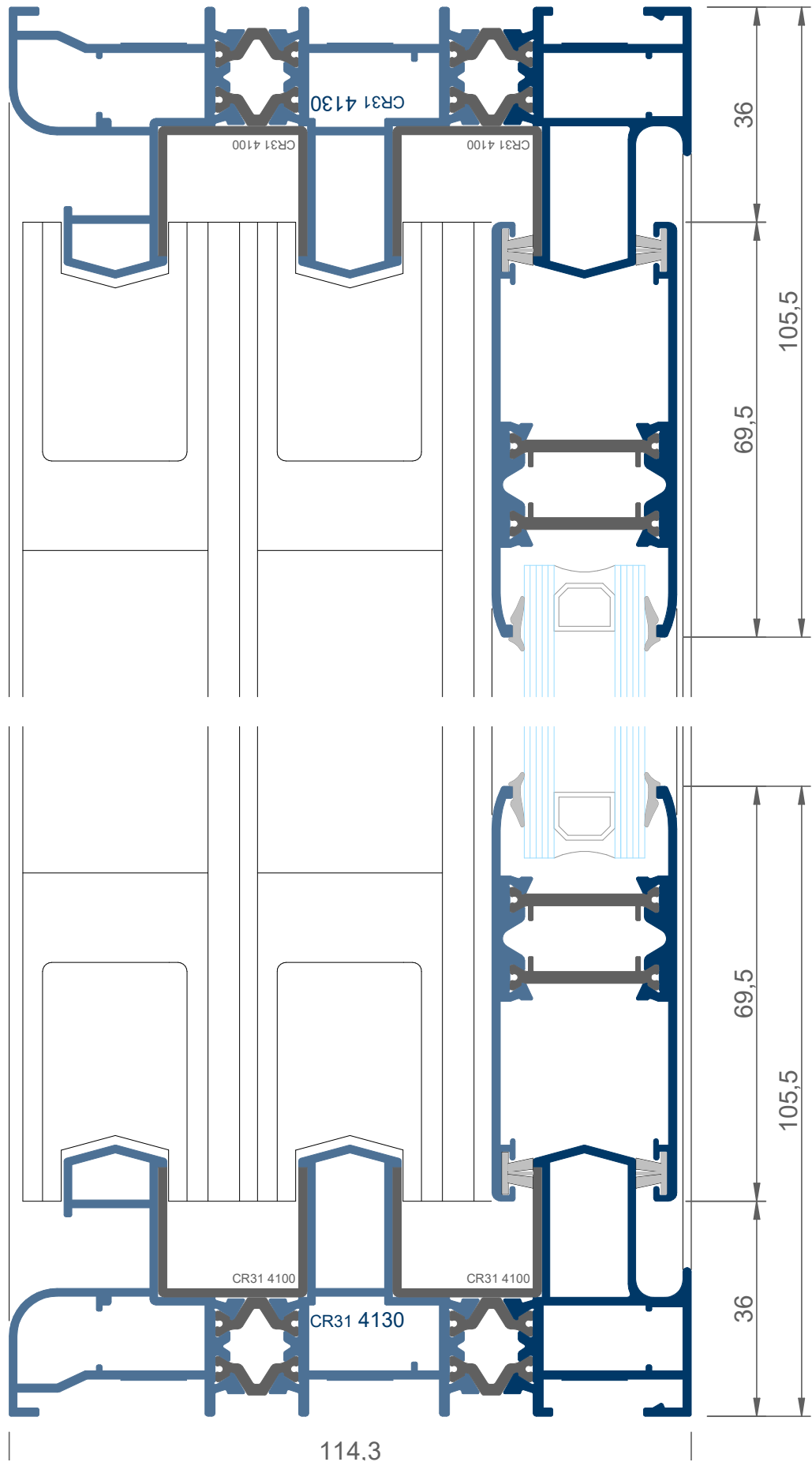


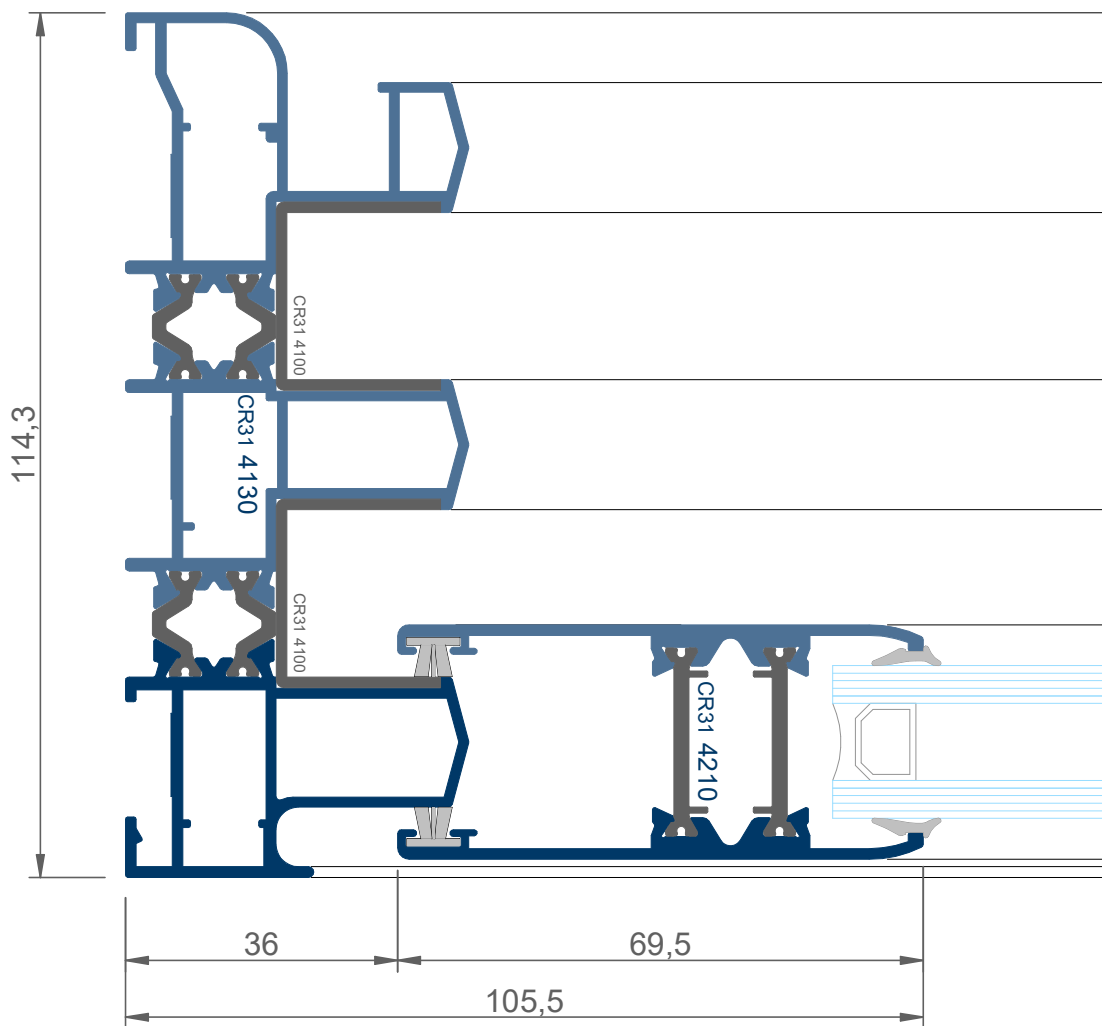


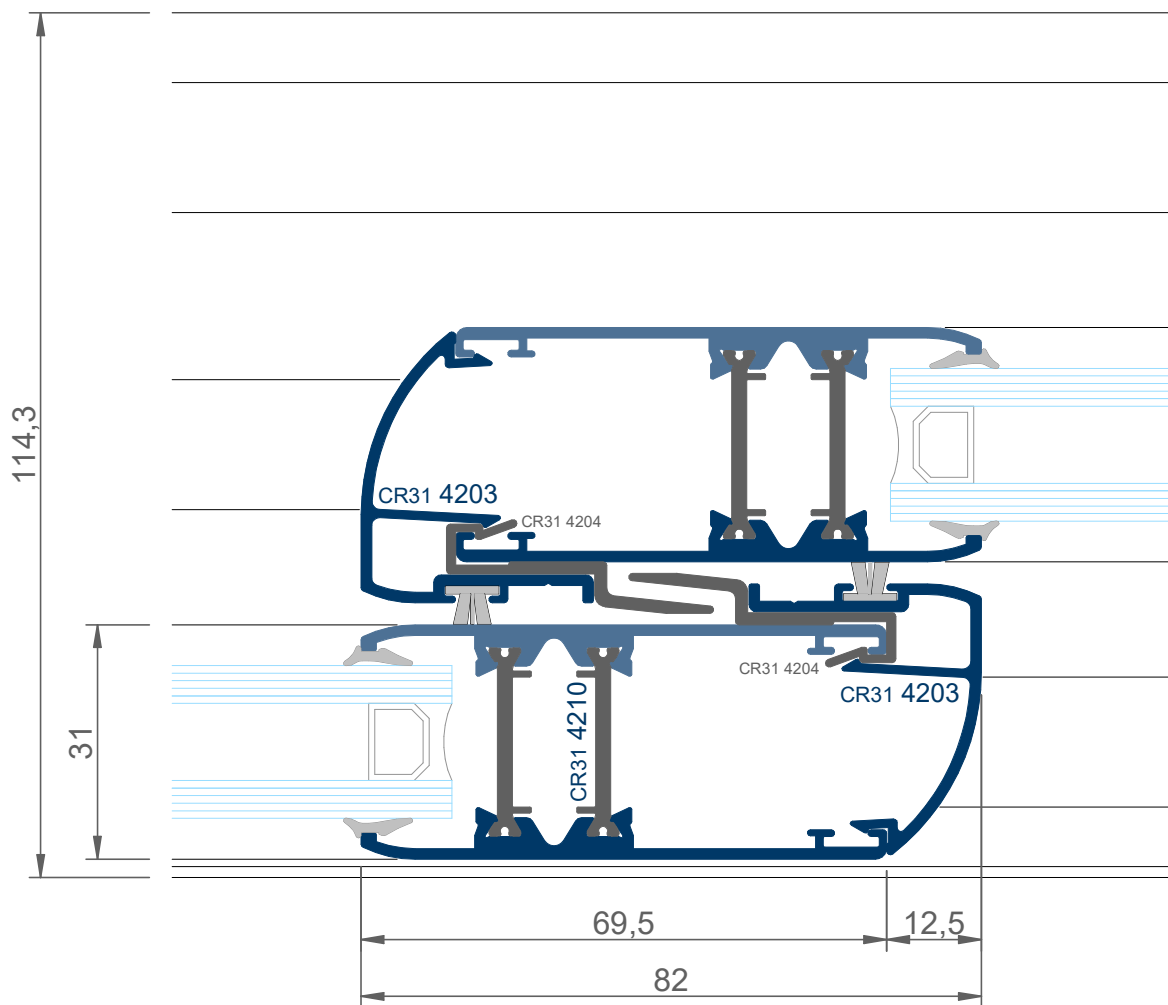


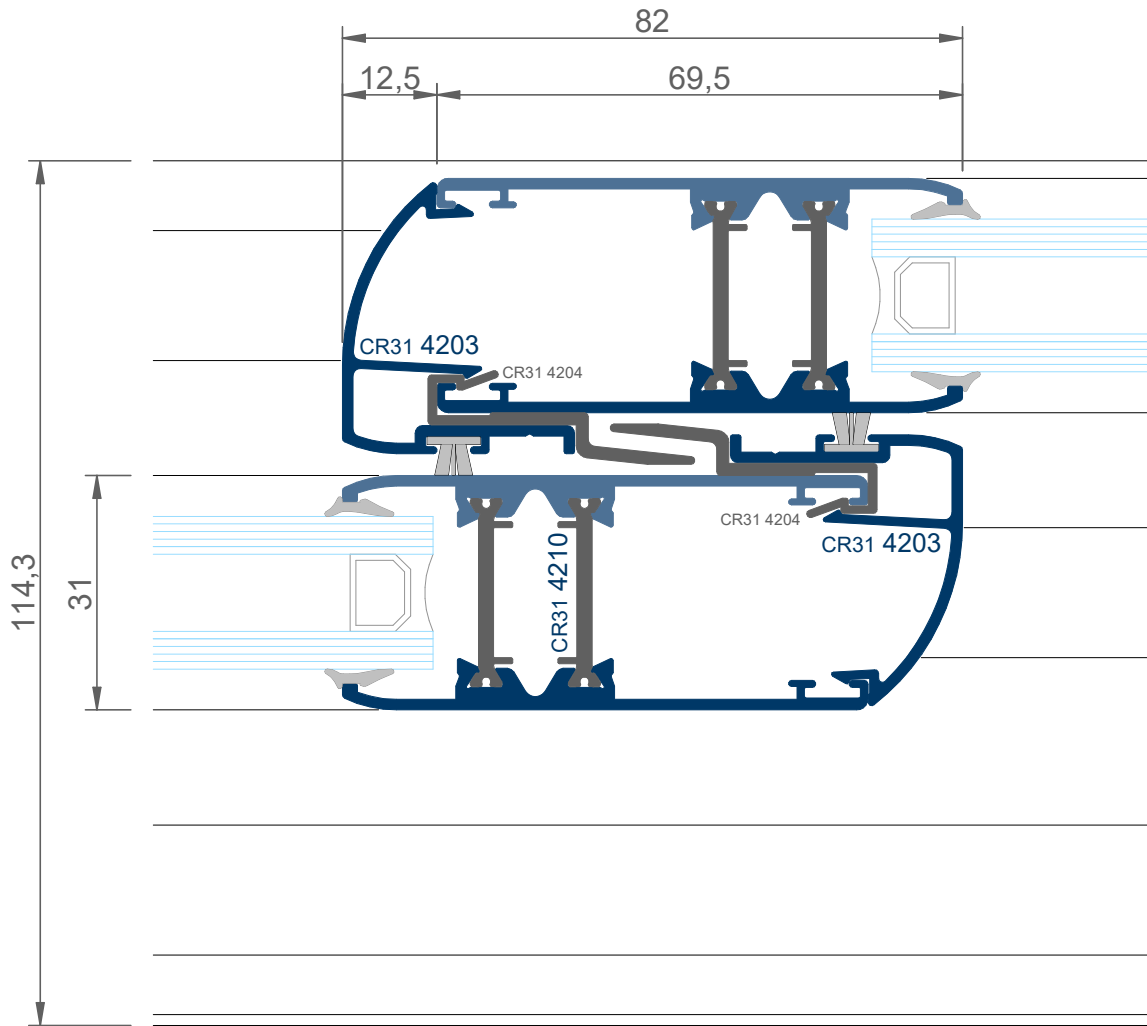


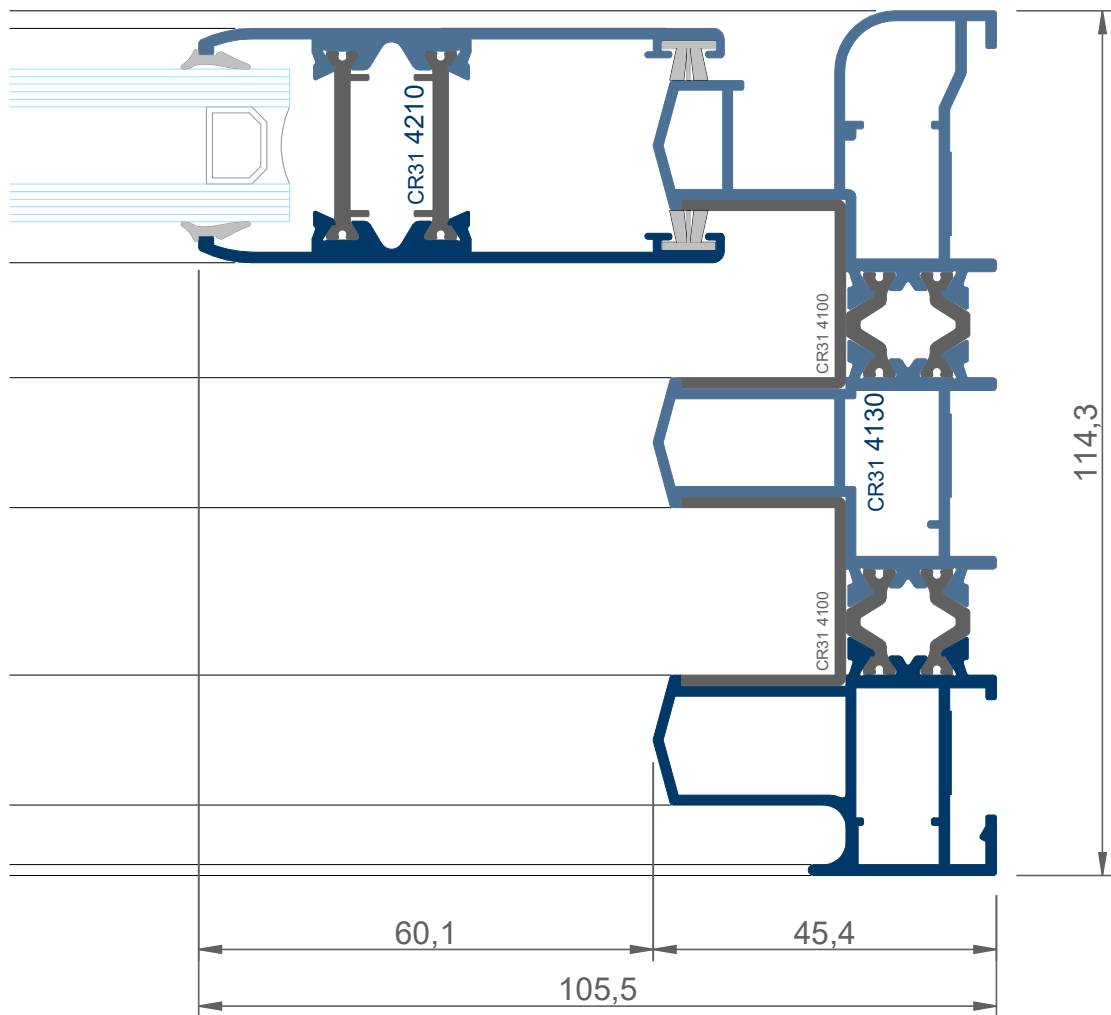


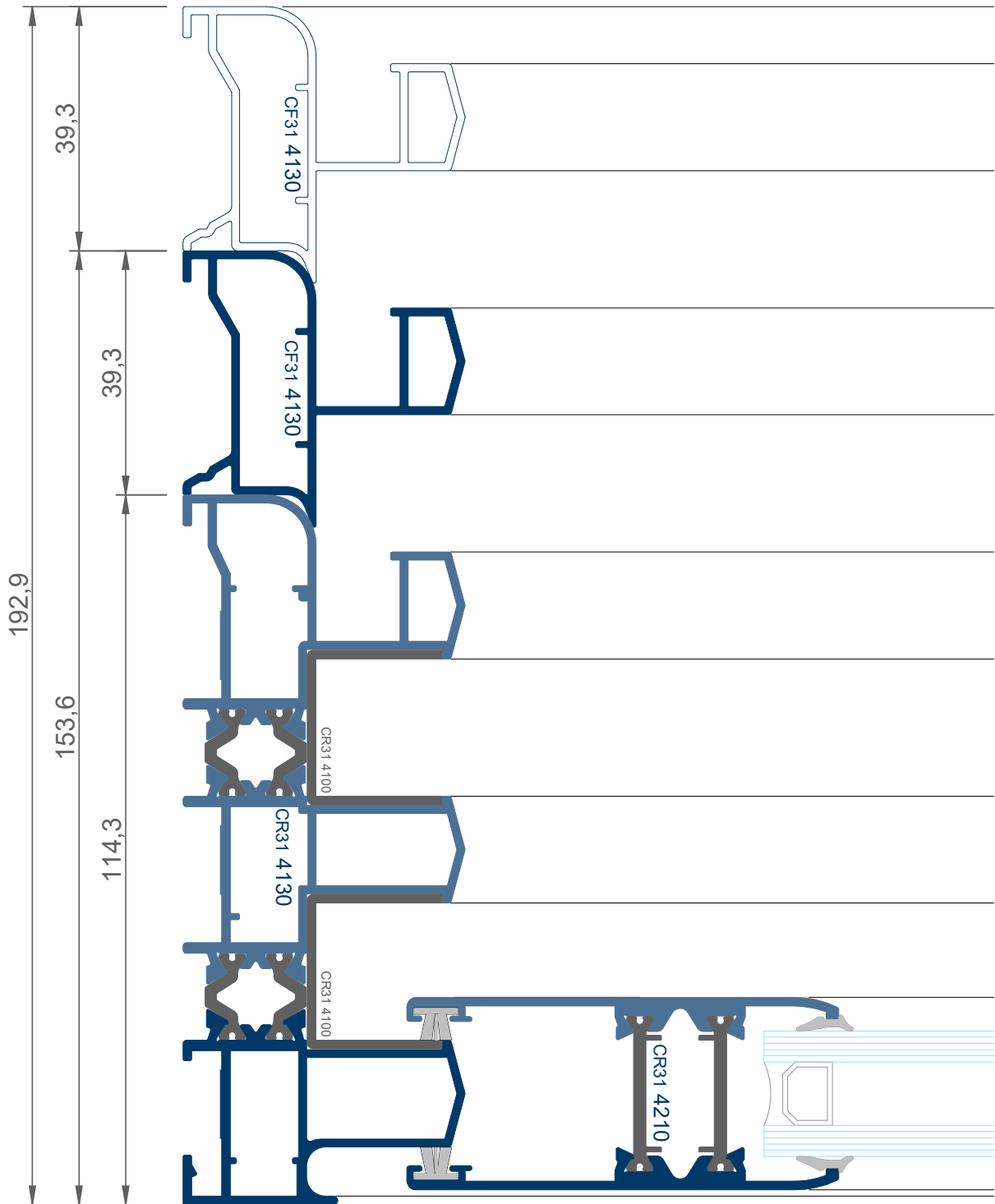


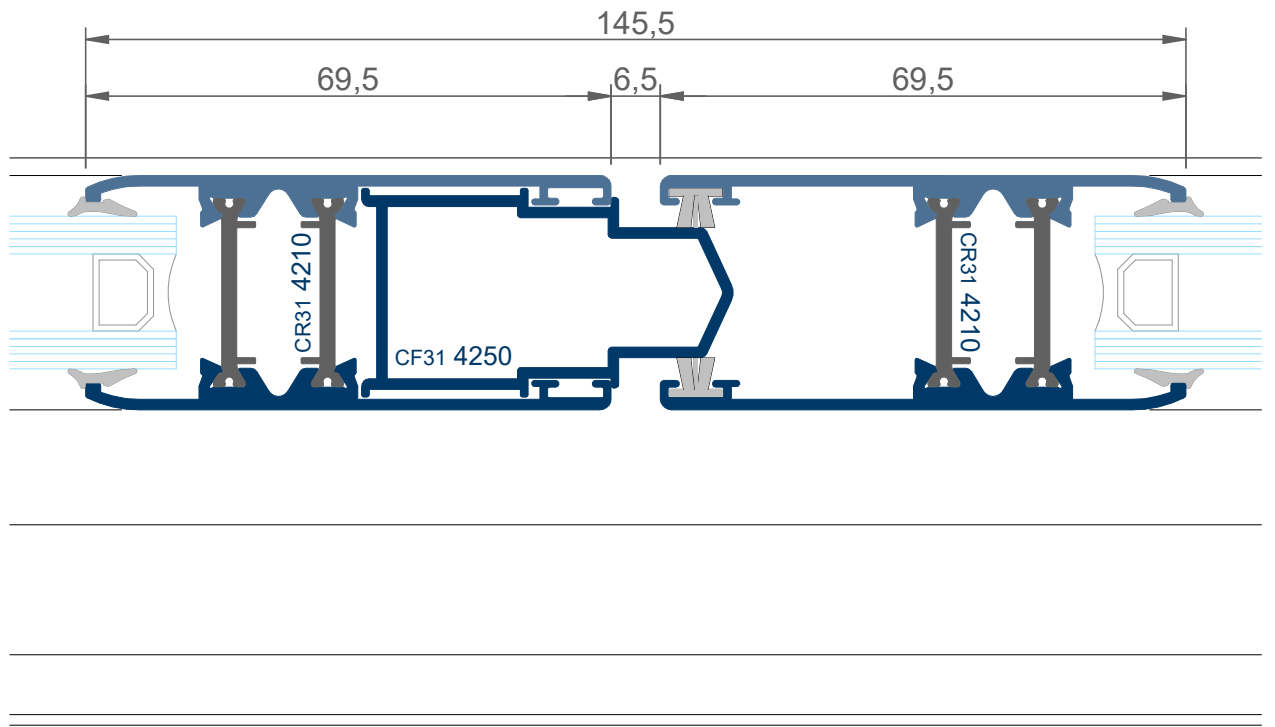


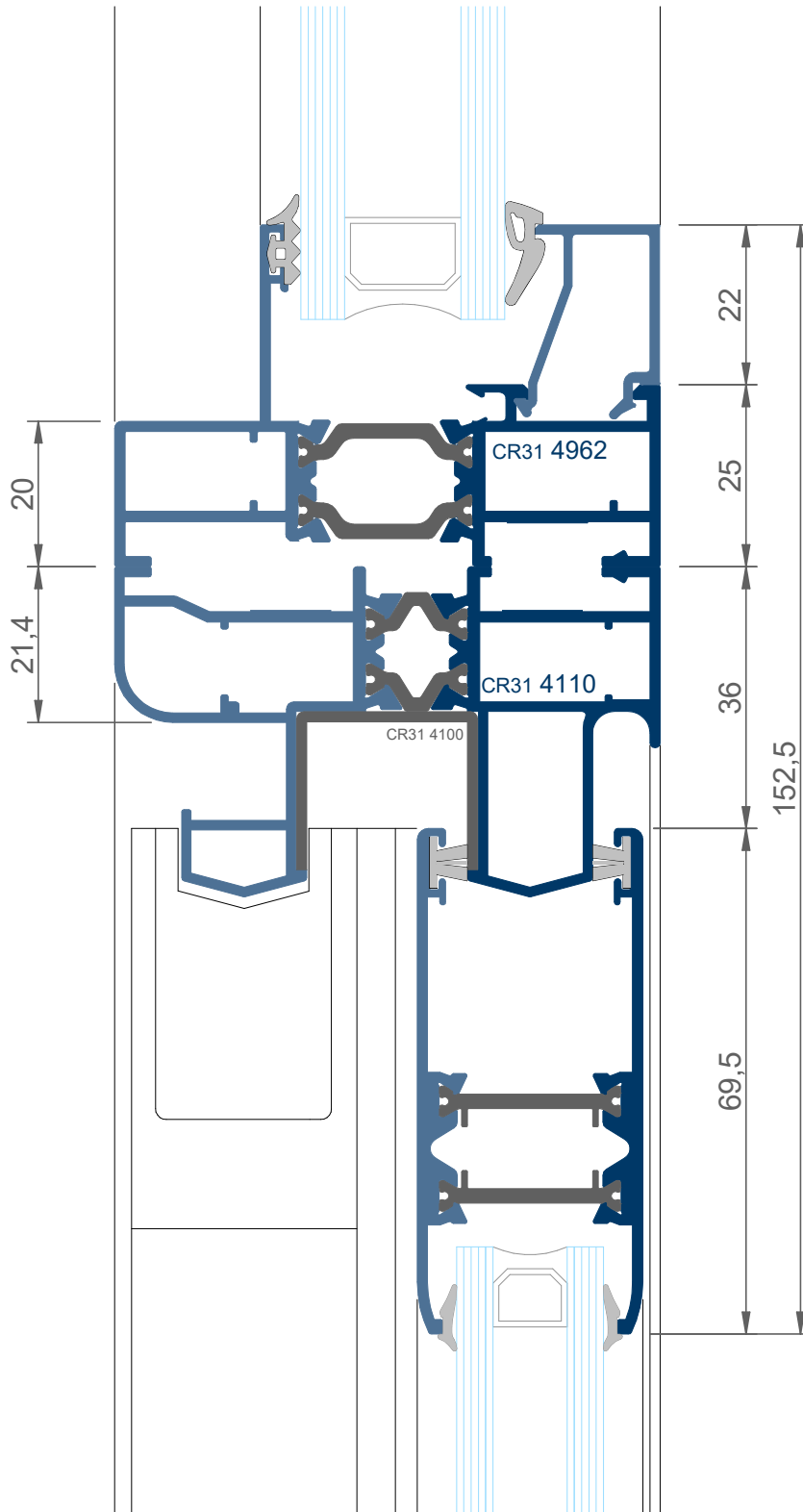




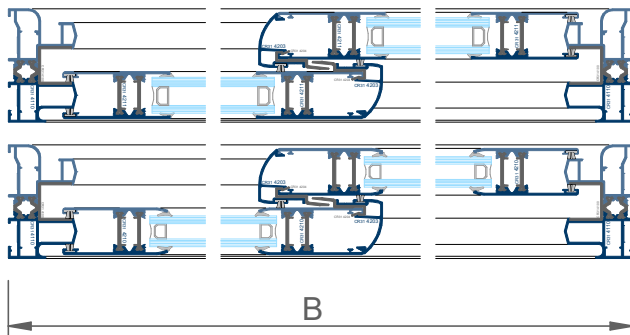
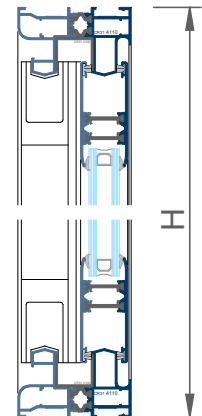
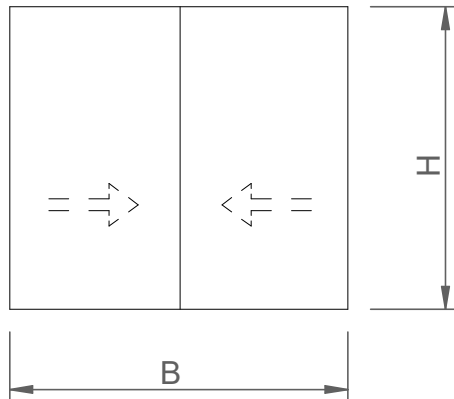






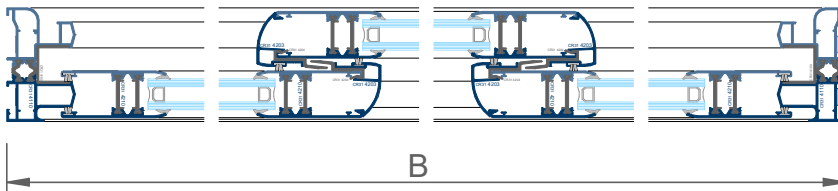
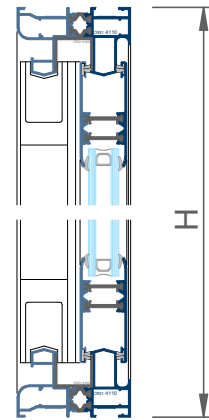
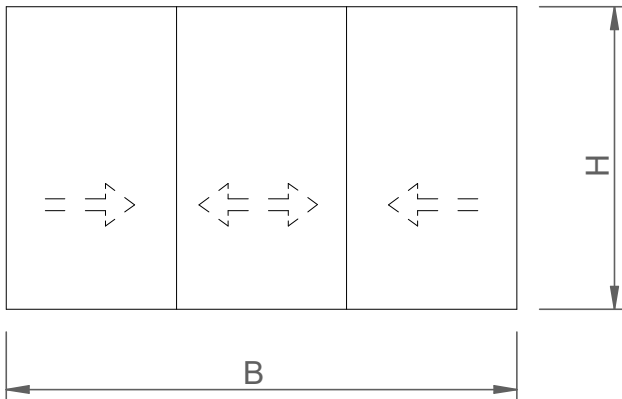






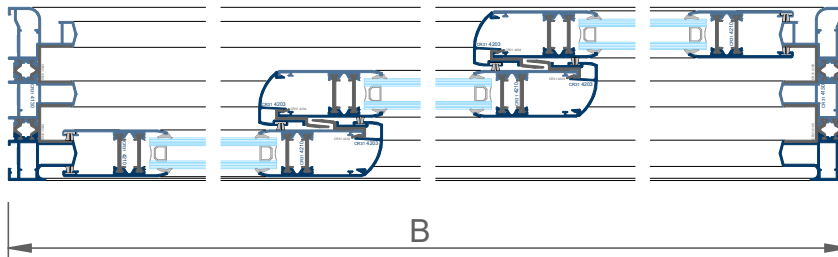
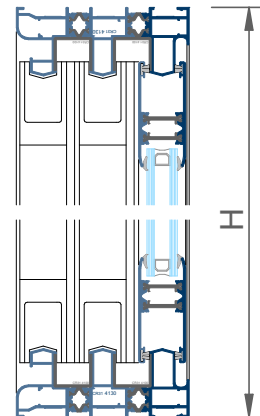
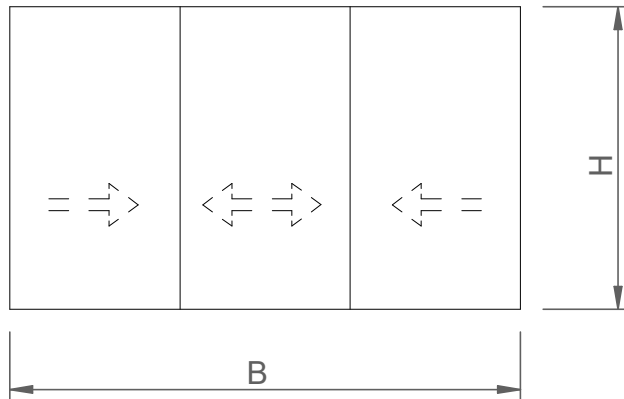
FORMULAS DE CORTE				
		UDS	FORMULA	FORMA
marco horizontal	<b>CR31.4110</b>	2	B	\---/
marco vertical	<b>CR31.4110</b>	2	H	\---/
hoja horizontal	<b>CR31.4210/11</b>	4	$(B-15)/2$	\---/
hoja vertical	<b>CR31.4210/11</b>	4	H-71	\---/
complemento cruce	<b>CR31.4204</b>	2	H-181	---
perfil cruce central	<b>CR31.4203</b>	2	H-181	---
U cubre carriles horizontal	<b>CR31.4100</b>	2	B-40	\---/
U cubre carriles vertical	<b>CR31.4100</b>	2	H-40	\---/
vidrio		2	$(B-245)/2 \times H-187$	

ACCESORIOS			UDS
escuadra marco y hoja	<b>A000.2110</b>		16
deflector con lamina	<b>A000.2300</b>		2
cortavientos superior	<b>A000.2346</b>		1
cortavientos inferior	<b>A000.2347</b>		1
juego piezas int hoja	<b>A000.2345</b>		2
juego tapas centrales hoja	<b>A000.2344</b>		2
ruedas	<b>A000.37XX</b>		4
cierre (según modelo)	ver D01 a D04		2
cepillo estanquidad 7x6	<b>A000.2376</b>		4B+6H



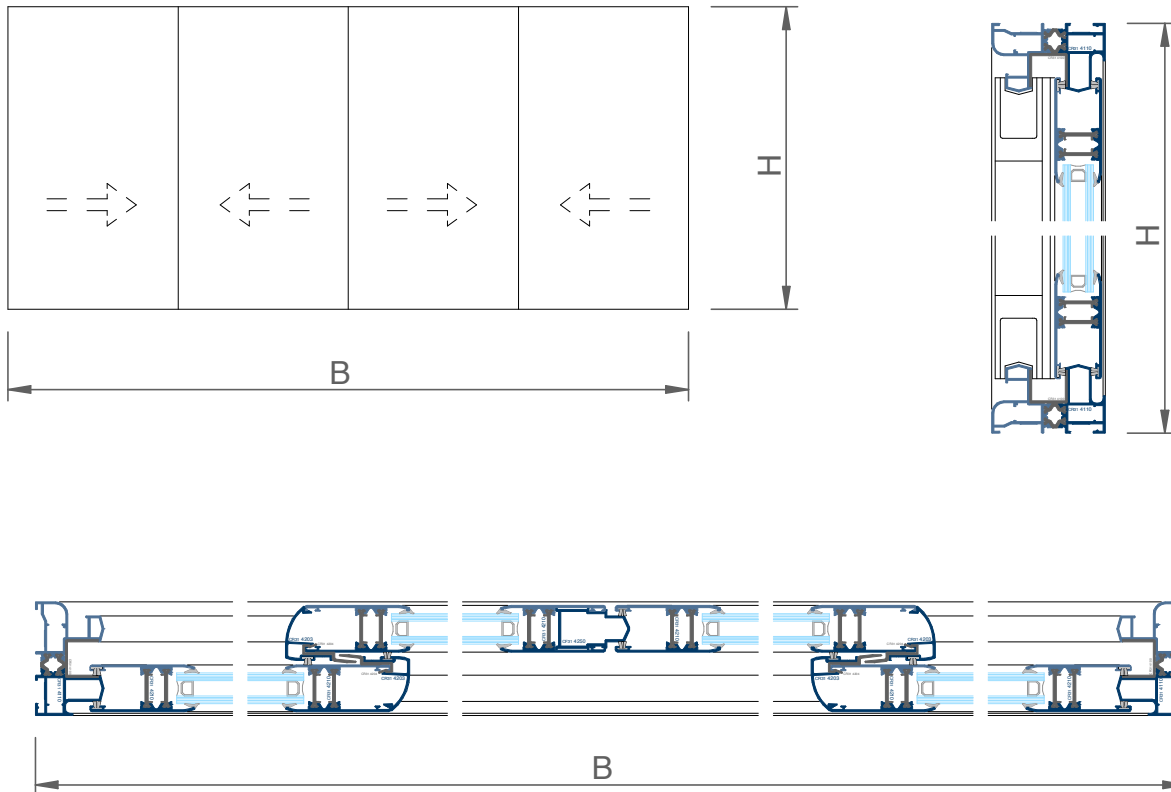
FORMULAS DE CORTE				
		UDS	FORMULA	FORMA
marco horizontal	<b>CR31.4110</b>	2	B	\---/
marco vertical	<b>CR31.4110</b>	2	H	\---/
hoja horizontal	<b>CR31.4210</b>	6	$(B+42)/3$	\---/
hoja vertical	<b>CR31.4210</b>	6	H-71	\---/
complemento cruce	<b>CR31.4204</b>	4	H-181	---
perfil cruce central	<b>CR31.4203</b>	4	H-181	---
U cubre carriles horizontal	<b>CR31.4100</b>	2	B-40	\---/
U cubre carriles vertical	<b>CR31.4100</b>	2	H-40	\---/
vidrio		3	$(B-303)/3 \times H-187$	

ACCESORIOS			UDS
escuadra marco y hoja	<b>A000.2110</b>		20
deflector con lamina	<b>A000.2300</b>		3
cortavientos superior	<b>A000.2346</b>		2
cortavientos inferior	<b>A000.2347</b>		2
juego piezas int hoja	<b>A000.2345</b>		2
juego tapas centrales hoja	<b>A000.2344</b>		4
ruedas	<b>A000.37XX</b>		6
cierre (según modelo)	ver D01 a D04		2
cepillo estanquidad 7x6	<b>A000.2376</b>		4B+8H



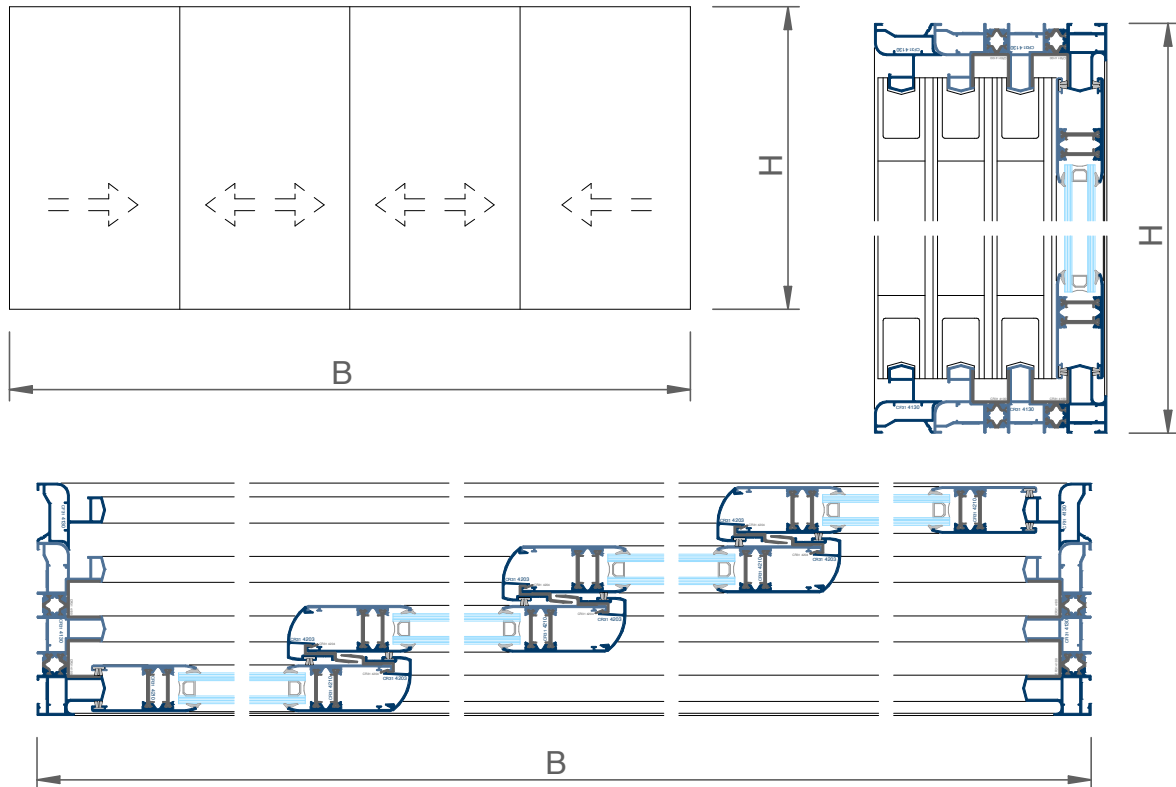
FORMULAS DE CORTE				
		UDS	FORMULA	FORMA
marco horizontal	CR31.4130	2	B	\---/
marco vertical	CR31.4130	2	H	\---/
hoja horizontal	CR31.4210	6	$(B+42)/3$	\---/
hoja vertical	CR31.4210	6	H-71	\---/
complemento cruce	CR31.4204	4	H-181	---
perfil cruce central	CR31.4203	4	H-181	---
U cubre carriles horizontal	CR31.4100	4	B-40	\---/
U cubre carriles vertical	CR31.4100	4	H-40	\---/
vidrio		3	$(B-303)/3 \times H-187$	

ACCESORIOS			UDS
escuadra marco y hoja	A000.2110		24
deflector con lamina	A000.2300		3
cortavientos superior	A000.2346		2
cortavientos inferior	A000.2347		2
juego piezas int hoja	A000.2345		2
juego tapas centrales hoja	A000.2344		4
ruedas	A000.37XX		6
cierre (según modelo)	ver D01 a D04		2
cepillo estanquidad 7x6	A000.2376		4B+8H



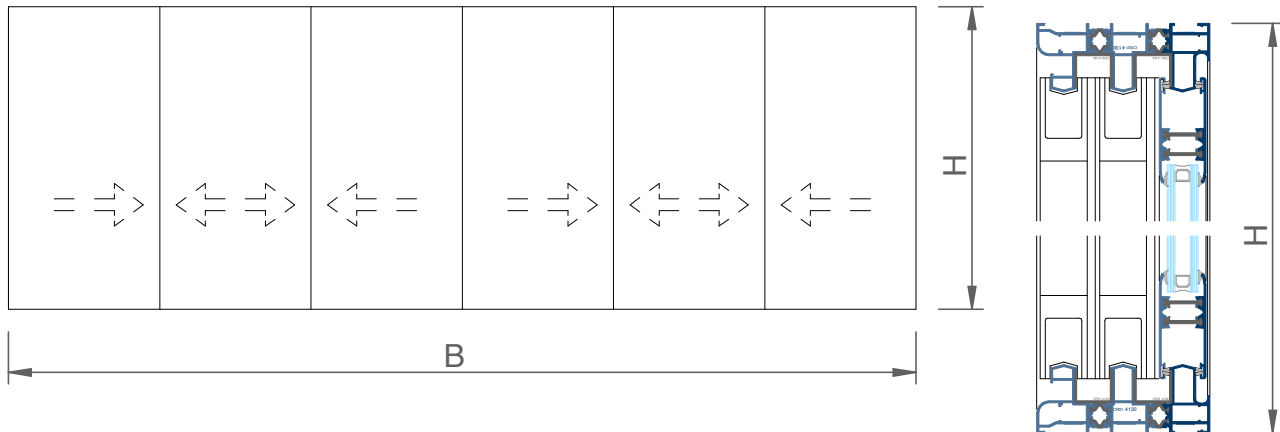
FORMULAS DE CORTE				
		UDS	FORMULA	FORMA
marco horizontal	CR31.4110	2	B	\---/
marco vertical	CR31.4110	2	H	\---/
hoja horizontal	CR31.4210	8	$(B+35)/4$	\---/
hoja vertical	CR31.4210	8	H-71	\---/
complemento cruce	CR31.4204	4	H-181	---
perfil cruce central	CR31.4203	4	H-181	---
perfil encuentro central	CF31.4250	1	H-151	---
U cubre carriles horizontal	CR31.4100	2	B-40	\---/
U cubre carriles vertical	CR31.4100	2	H-40	\---/
vidrio		4	$(B-424)/4 \times H-187$	

ACCESORIOS		
		UDS
escuadra marco y hoja	A000.2110	24
deflector con lamina	A000.2300	3
cortavientos superior	A000.2346	2
cortavientos inferior	A000.2347	2
juego piezas int hoja	A000.2345	4
juego tapas centrales hoja	A000.2344	4
tapa terminal CF314250	CF31.2350	2
ruedas	A000.37XX	8
cierre (según modelo)	ver D01 a D04	3
cepillo estanquidad 7x6	A000.2376	4B+10H

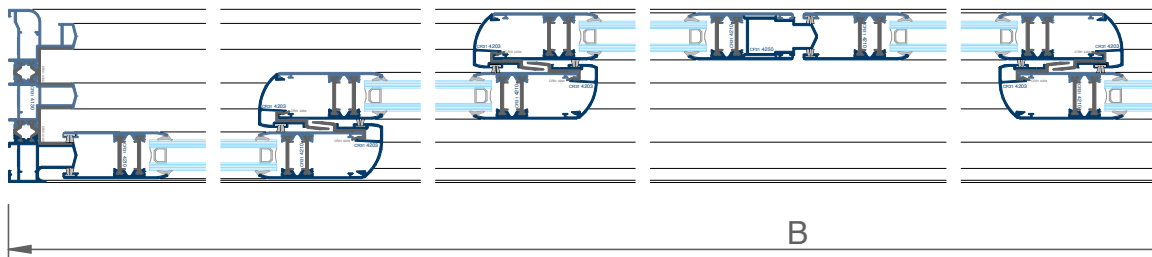


FORMULAS DE CORTE				
		UDS	FORMULA	FORMA
marco horizontal	<b>CR31.4130</b>	2	B	\---/
marco vertical	<b>CR31.4130</b>	2	H	\---/
marco adicional horizontal	<b>CF31.4130</b>	2	B	\---/
marco adicional vertical	<b>CF31.4130</b>	2	H	\---/
hoja horizontal	<b>CR31.4210</b>	8	$(B+104)/4$	\---/
hoja vertical	<b>CR31.4210</b>	8	H-71	\---/
complemento cruce	<b>CR31.4204</b>	6	H-181	---
perfil cruce central	<b>CR31.4203</b>	6	H-181	---
U cubre carriles horizontal	<b>CR31.4100</b>	4	B-40	\---/
U cubre carriles vertical	<b>CR31.4100</b>	4	H-40	\---/
vidrio		4	$(B-360)/4 \times H-187$	

ACCESORIOS			UDS
escuadra marco y hoja	<b>A000.2110</b>		32
deflector con lamina	<b>A000.2300</b>		6
cortavientos superior	<b>A000.2346</b>		3
cortavientos inferior	<b>A000.2347</b>		3
juego piezas int hoja	<b>A000.2345</b>		2
juego tapas centrales hoja	<b>A000.2344</b>		6
ruedas	<b>A000.37XX</b>		8
cierre (según modelo)	ver D01 a D04		2
cepillo estanquidad 7x6	<b>A000.2376</b>		4B+10H



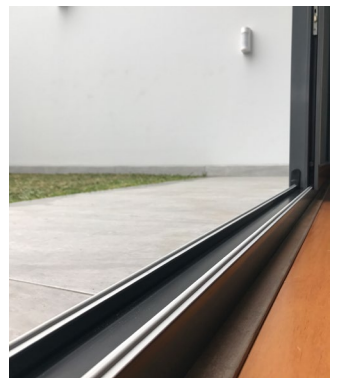
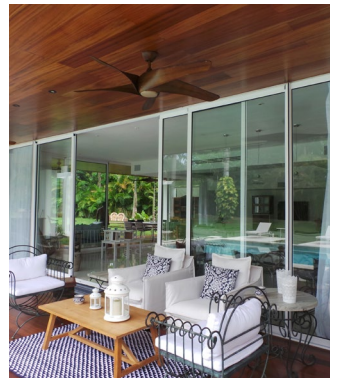
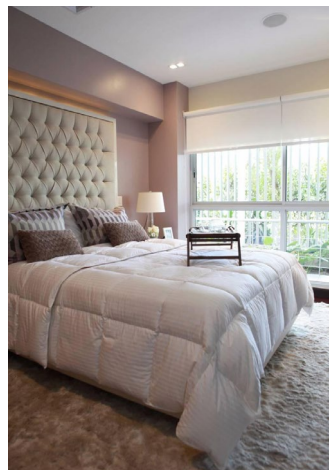
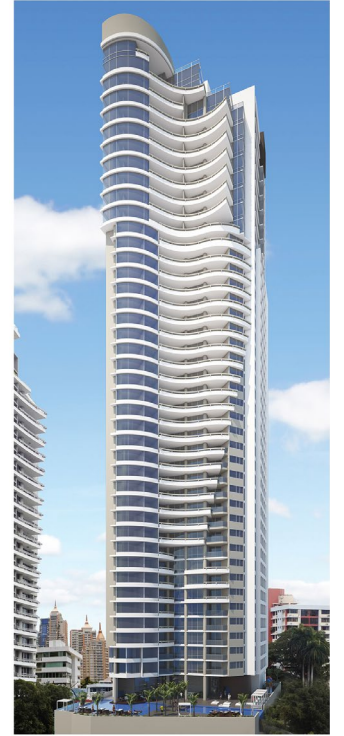
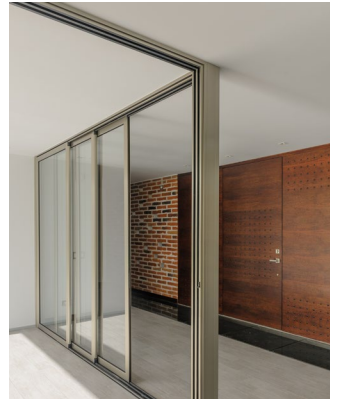
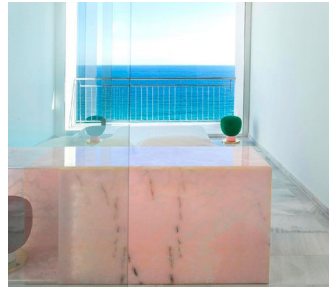
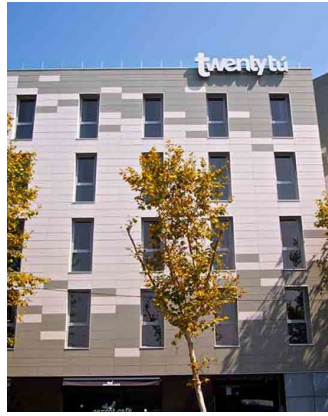
**Fórmulas de corte**



FORMULAS DE CORTE				
		UDS	FORMULA	FORMA
marco horizontal	<b>CR31.4130</b>	2	B	\---/
marco vertical	<b>CR31.4130</b>	2	H	\---/
hoja horizontal	<b>CR31.4210</b>	12	$(B+150)/6$	\---/
hoja vertical	<b>CR31.4210</b>	12	H-71	\---/
complemento cruce	<b>CR31.4204</b>	8	H-181	---
perfil cruce central	<b>CR31.4203</b>	8	H-181	---
perfil encuentro central	<b>CF31.4250</b>	1	H-151	---
U cubre carriles horizontal	<b>CR31.4100</b>	4	B-40	\---/
U cubre carriles vertical	<b>CR31.4100</b>	4	H-40	\---/
vidrio		6	$(B-540)/6 \times H-187$	

ACCESORIOS			UDS
escuadra marco y hoja	<b>A000.2110</b>		36
deflector con lamina	<b>A000.2300</b>		3
cortavientos superior	<b>A000.2346</b>		4
cortavientos inferior	<b>A000.2347</b>		4
juego piezas int hoja	<b>A000.2345</b>		4
juego tapas centrales hoja	<b>A000.2344</b>		8
tapa terminal CF314250	<b>CF31.2350</b>		2
ruedas	<b>A000.37XX</b>		12
cierre (según modelo)	ver D01 a D04		3
cepillo estanquidad 7x6	<b>A000.2376</b>		4B+14H





# THERMIA®

B A R C E L O N A

Ventanas para vivir mejor

## Sede Central en Barcelona

C/ Narcís Monturiol, 34  
08192 Sant Quirze del Vallès  
Barcelona (España)  
Tel. +34 937 121 237  
contacto@thermiabarcelona.com  
Síguenos en   

## Delegación Área Andina

Los Telares, 289  
Urbanización Industrial Vulcano  
Ate, Lima (Perú)  
Tel. +51-1-7197649

## Showrooms

**Barcelona**  
Narcís Monturiol, 34  
08192 Sant Quirze Valles  
Tel. +34 937 121 237

**Lima**  
Paseo de la República, 3583  
2o. Piso - San Isidro  
Tel. +51-1-7197649

**Girona**  
Carrer Sant Jordi, 2  
Local 4 - Sarrià de Ter  
Tel. +34 937 121 237

**THERMIABARCELONA.COM**