

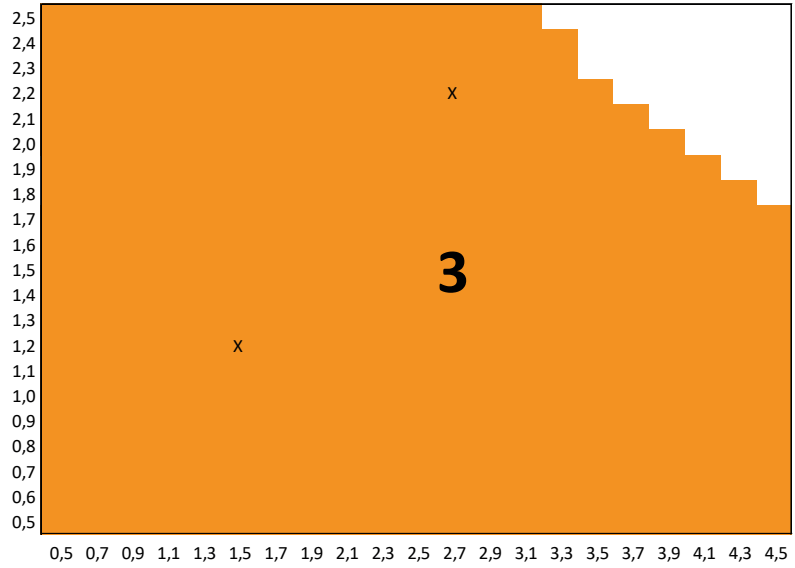


## THERMIA® CF31

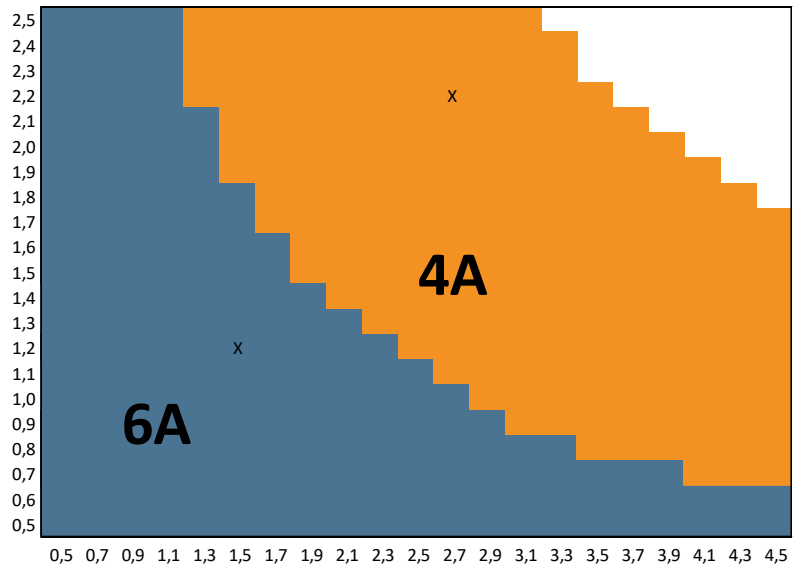
Disfrutar del exterior  
sin renunciar al silencio.

**Ventanas para vivir mejor**

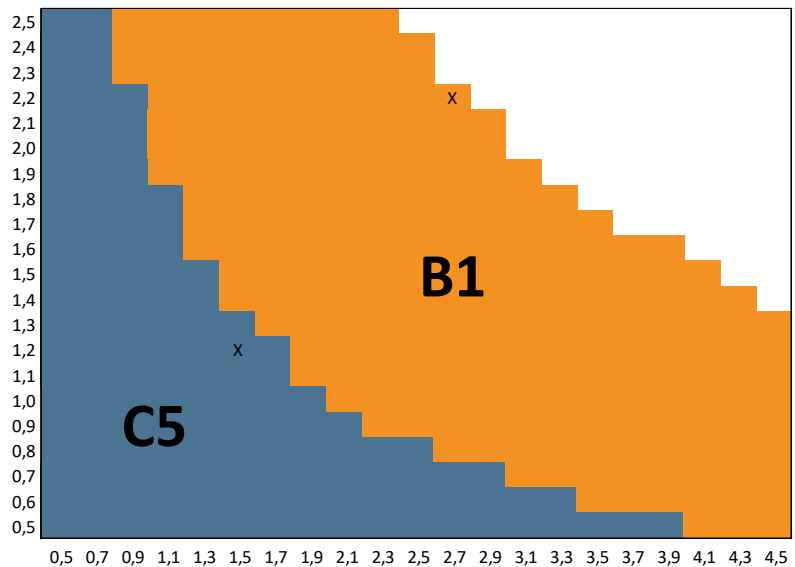
PERMEABILIDAD AL AIRE según EN 12207 - Marcado CE según EN 14351-1:2006 (E.1)



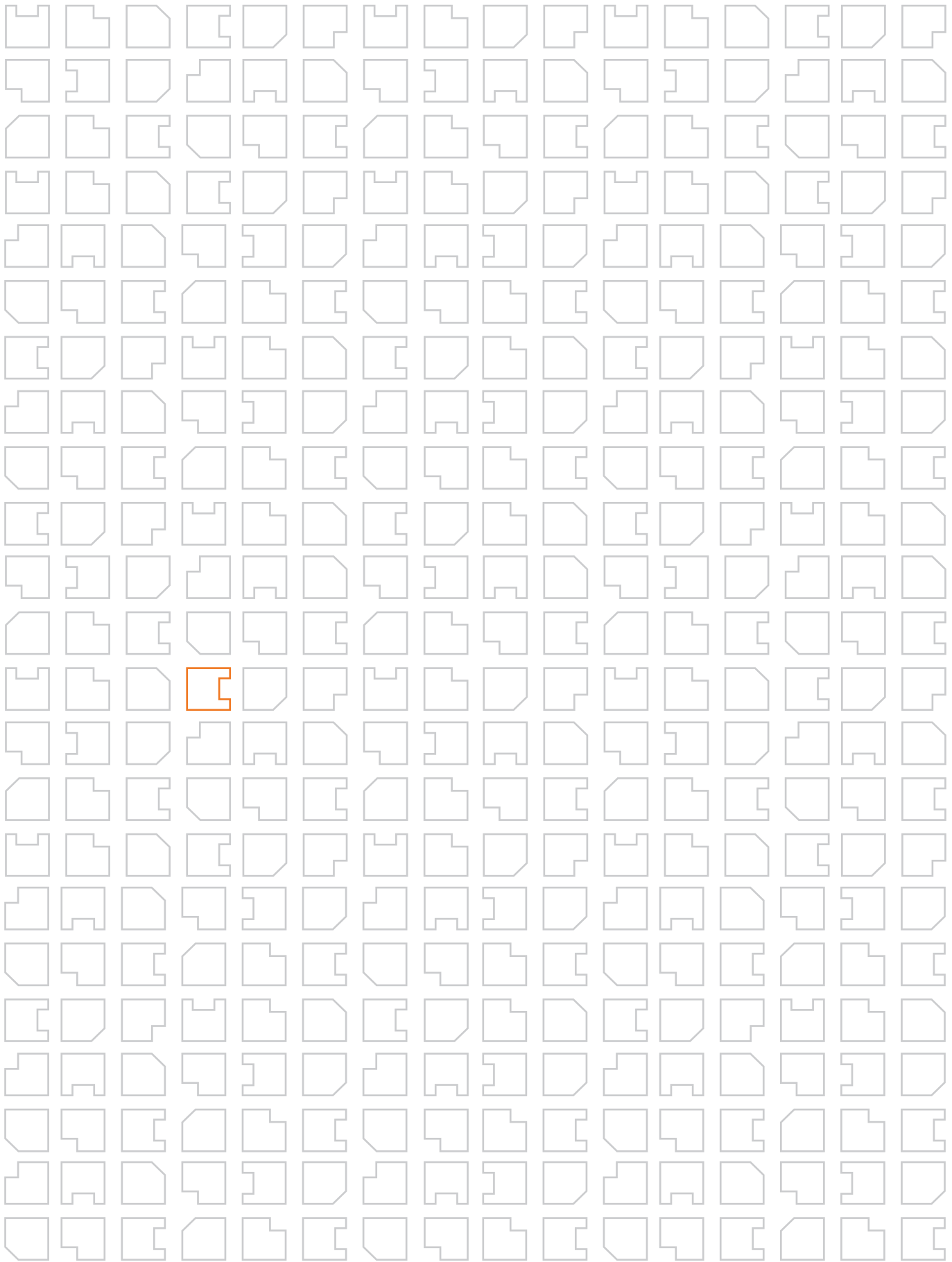
ESTANQUIDAD AL AGUA según EN 12208 - Marcado CE según EN 14351-1:2006 (E.1)

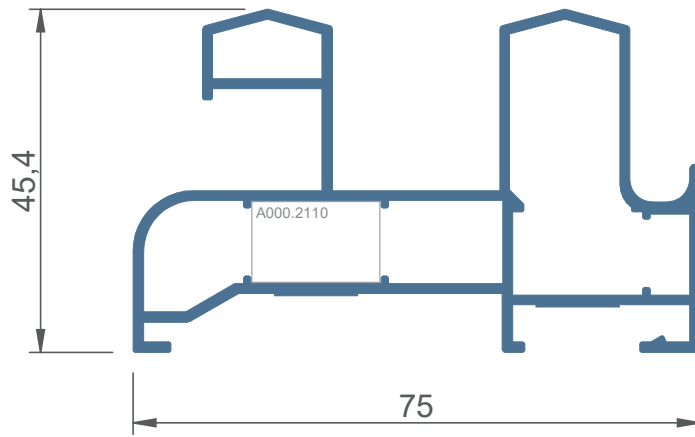


RESISTENCIA AL VIENTO según EN 12210 - Marcado CE según EN 14351-1:2006 (E.1)

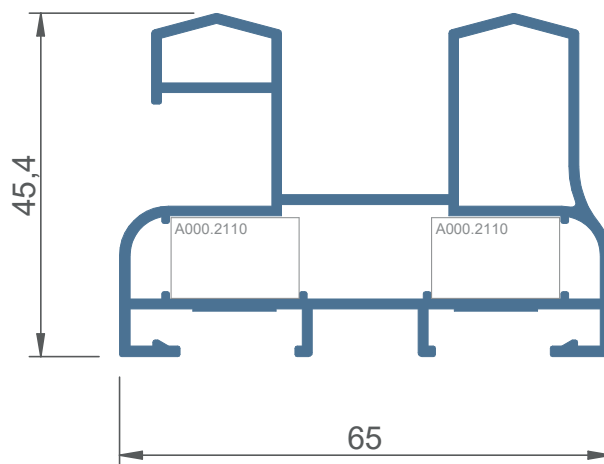


Resultados obtenidos de los informes según ensayos internos, y en base al Anexo E de la norma EN 14351-1:2006.

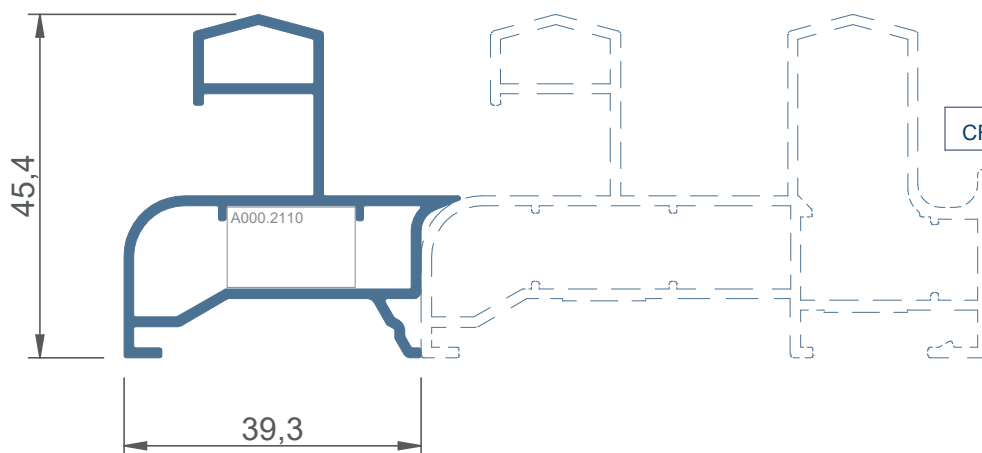




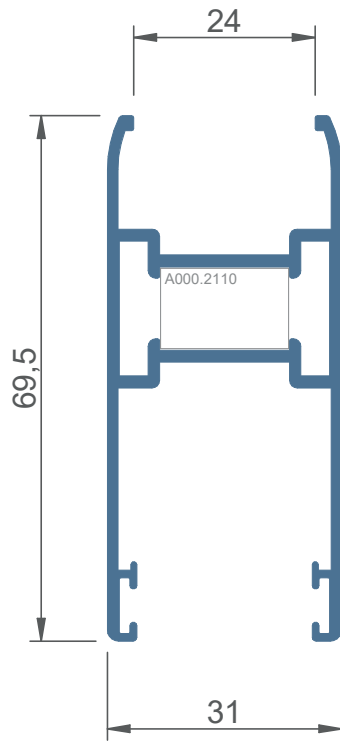
CF31 4110



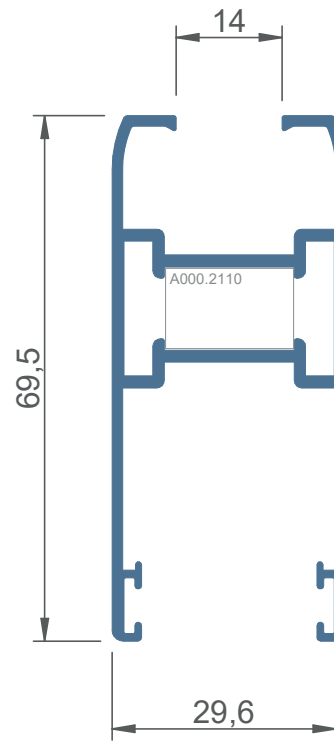
CF31 4121



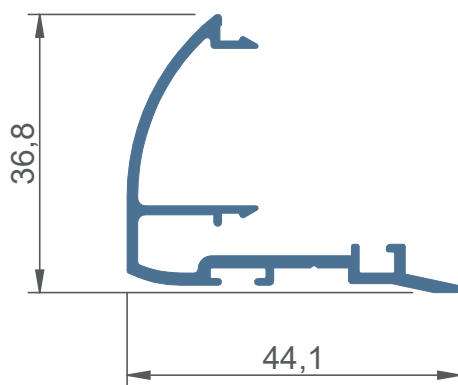
CF31 4130



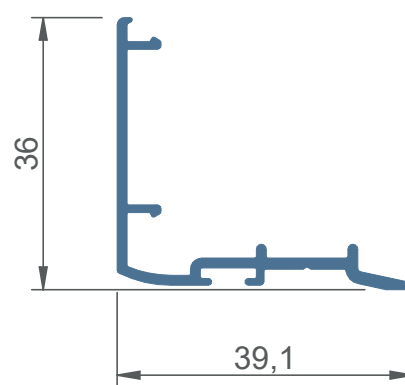
CF31 4210



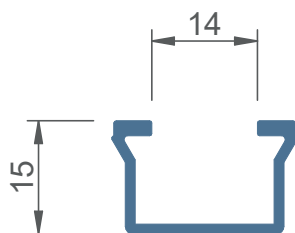
CF31 4212



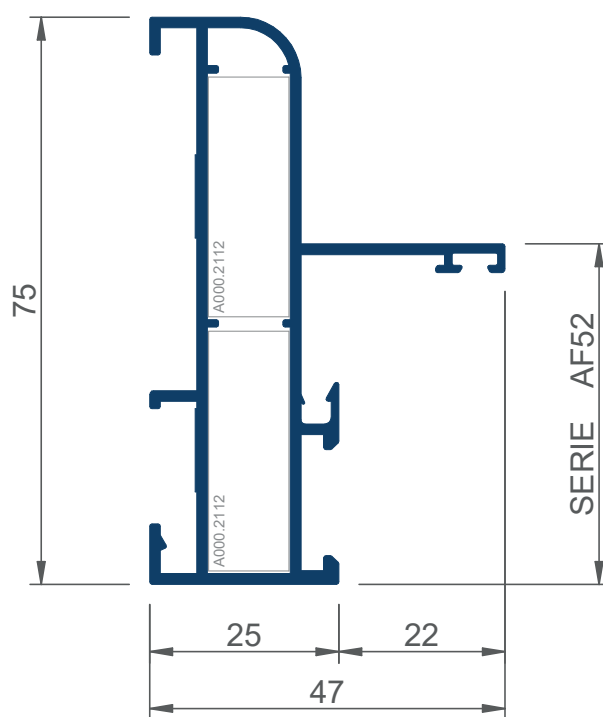
CF31 4201



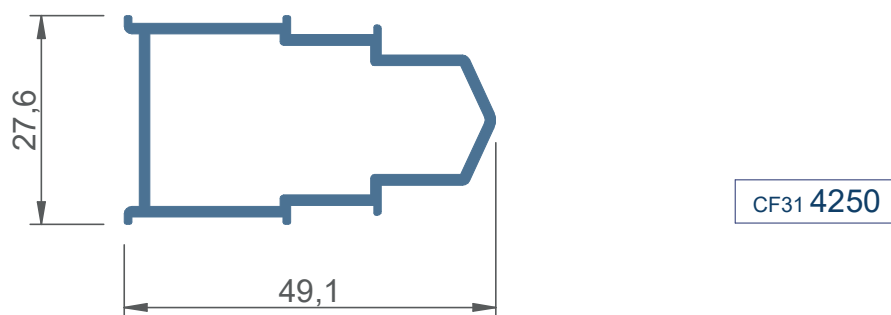
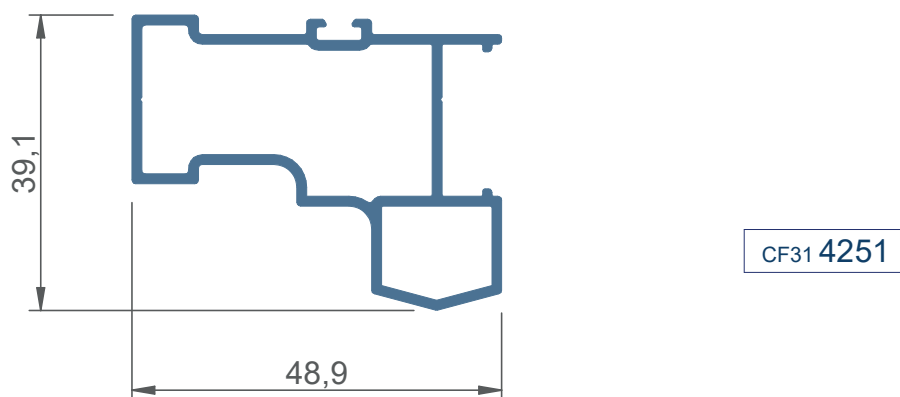
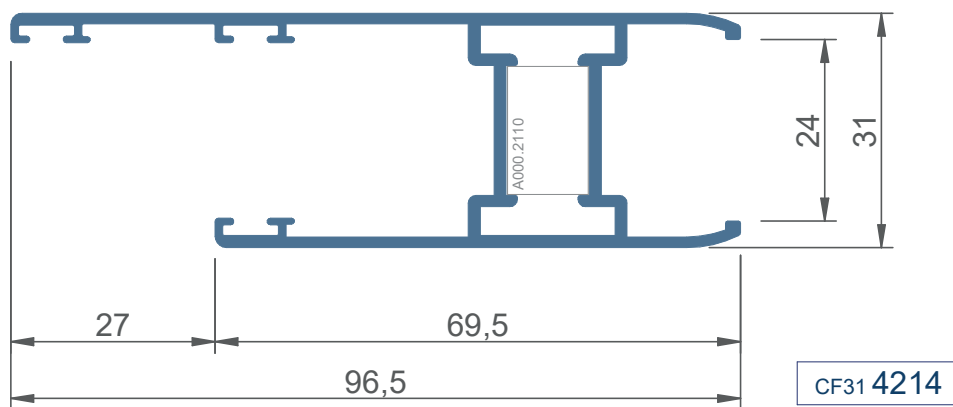
CF31 4205



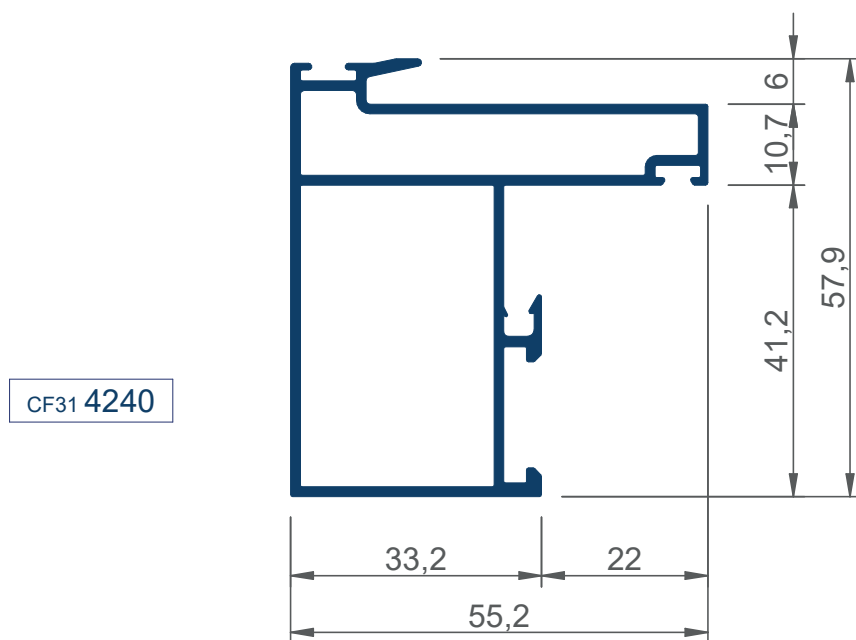
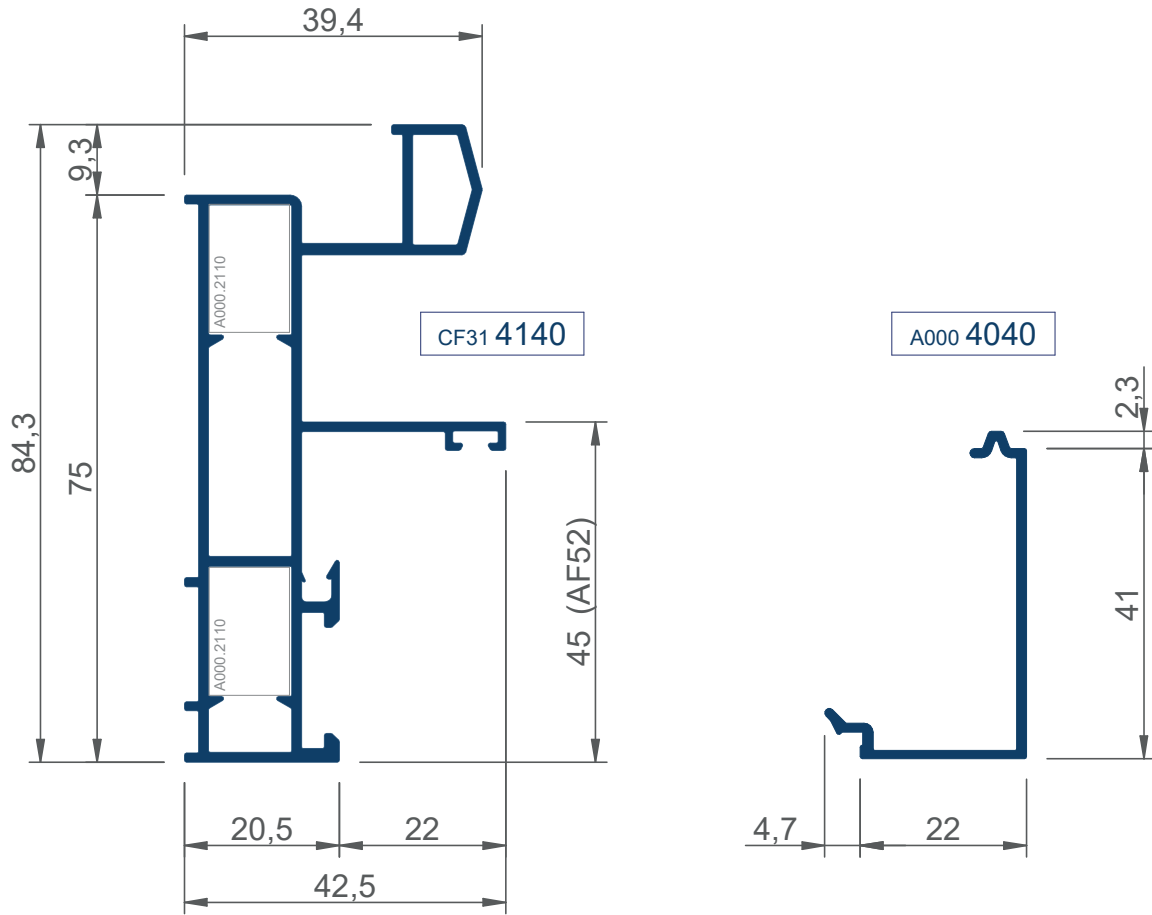
A000 4564

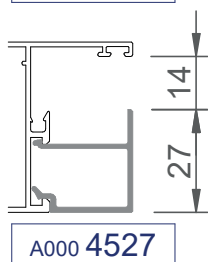
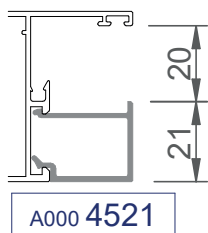
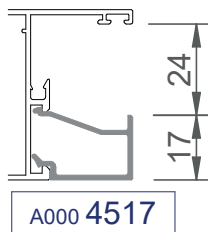
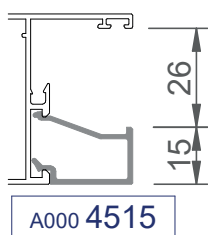
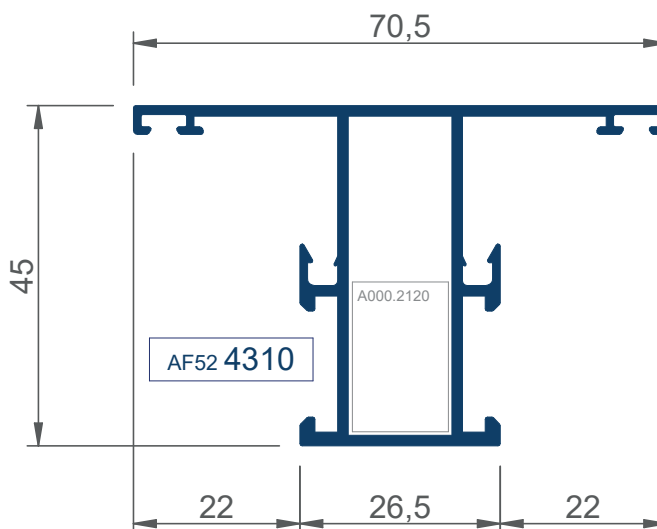
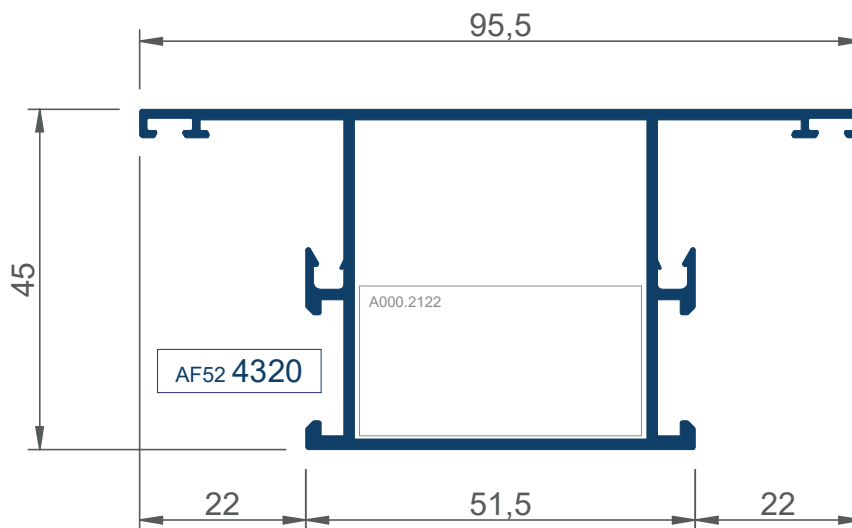


CF31 4952









A000 2351

junta exterior (2mm)



A000 2353

junta cuña (de 3 a 5mm)



A000 2355

junta cuña (de 5 a 7mm)



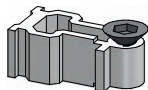
A000 2357

junta cuña (de 7 a 9mm)



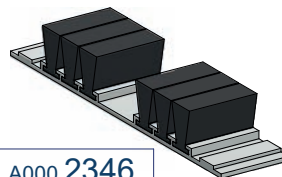
A000 2110

escuadra



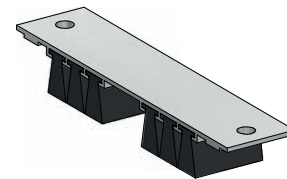
A000 2120

pieza unión perfil  
CF31.4240



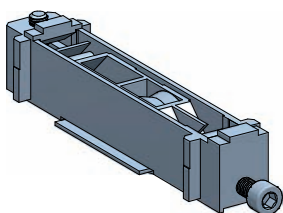
A000 2346

cortavientos inferior  
adhesivo



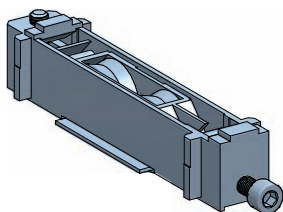
A000 2347

cortavientos superior  
desmontable



A000 3752

rueda simple regulable  
(agujas) 60 kg/hoja



A000 3754

rueda tándem regulable  
(bolas) 140 kg/hoja

A000 3784

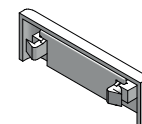
rueda tándem regulable  
(agujas Pabose) 160 kg/hoja

A000 3782

rueda simple regulable  
(agujas Pabose) 80 kg/hoja

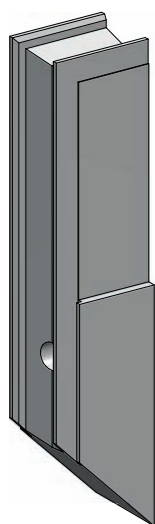
A000 2300

tapón deflector  
con lámina



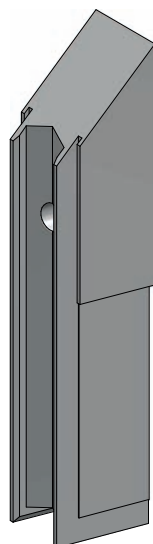
A000 2376

cepillo estanquidad  
7x6 con lámina central



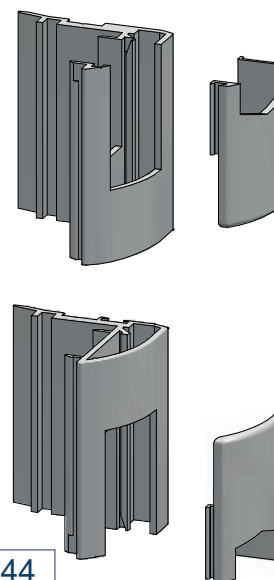
A000 2345

topes final carrera y  
antielevación una hoja



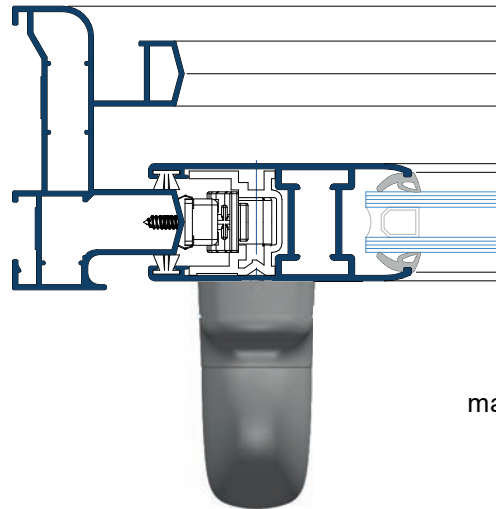
A000 2344

kit tapas centrales hoja  
perfil cruce CF31.4201  
(no utilizable en perfil CF31.4205)

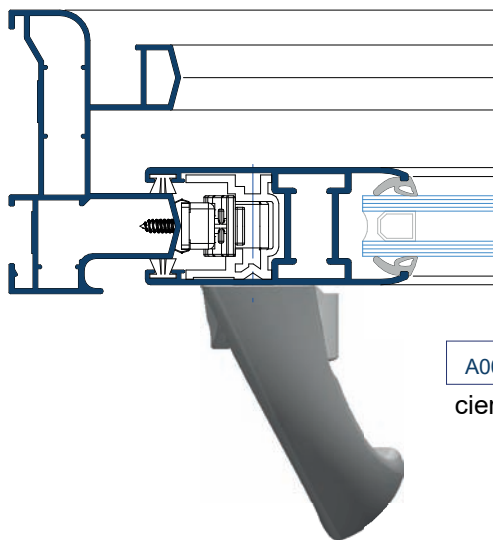




A000 3740  
manilla cremona



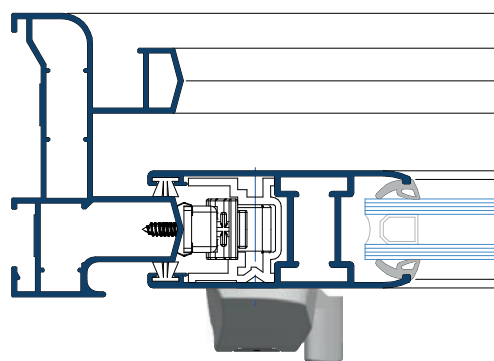
A000 3751  
manilla hoja secundaria

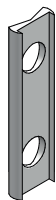


A000 3770  
cierres tirador



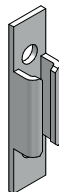
A000 3771  
cierres base





A000 3741

apoyo pieza 3742

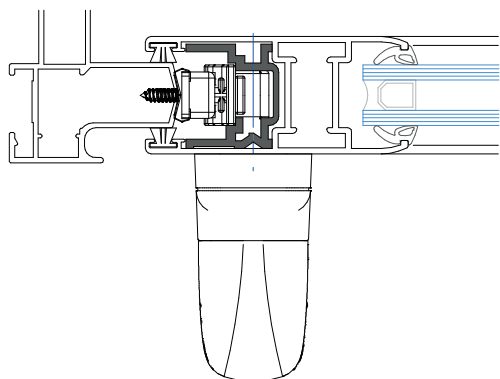


A000 3742

cerradero multipunto

A000 3749

perfil apoyo multipunto  
(barras de 2m.)



**ENTRADA 7,5mm**

A000 3746 (long 600)

A000 3747 (long 1000)

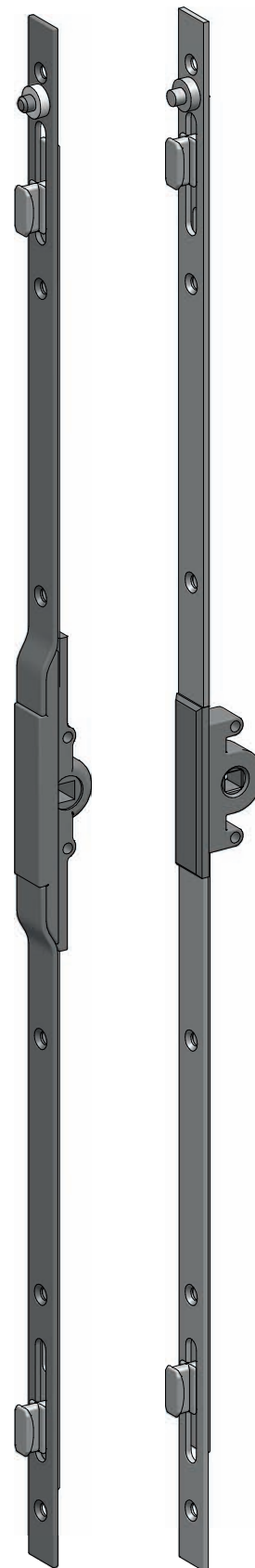
A000 3748 (long 1800)

**ENTRADA 15mm**

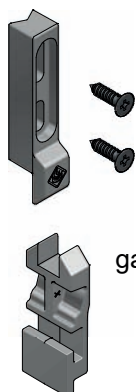
A000 37464 (long 600)

A000 37474 (long 1000)

A000 37484 (long 1800)



alt minima corred	1000	1400	2200
herraje entrada 7,5	A000 3746	A000 3747	A000 3748
herraje entrada 15	A000 37464	A000 37474	A000 37484
puntos de cierre	2	2	3
cerradero	A000 3742 (2uds)	A000 3742 (2uds)	A000 3742 (3uds)
calce cerradero	A000 3741 (2uds)	A000 3741 (2uds)	A000 3741 (3uds)
cremona	A000 3740 (1 ud)	A000 3740 (1 ud)	A000 3740 (1 ud)
perfil apoyo herraje	A000 3749	A000 3749	A000 3749



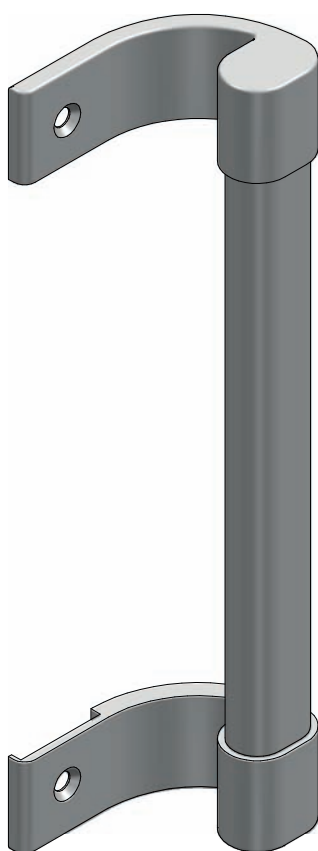
A000 3710  
gancho y cerradero



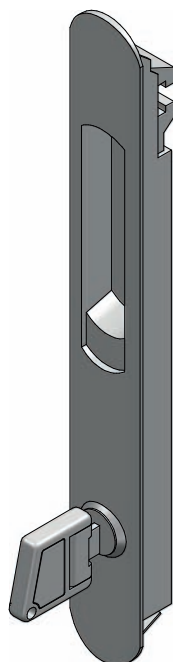
A000 3732  
cierre corto



A000 3734  
cierre base



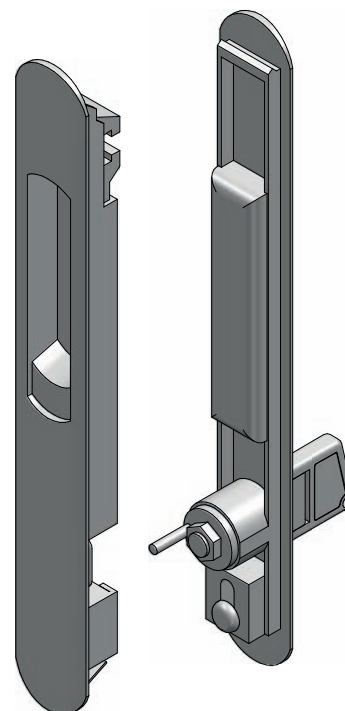
A000 3731  
tirador universal



A000 3735  
cierre con llave

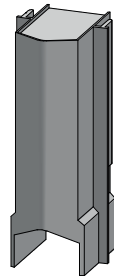


A000 3738  
uñero ext

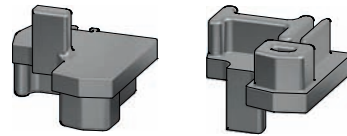


A000 3736  
cierre con llave ext

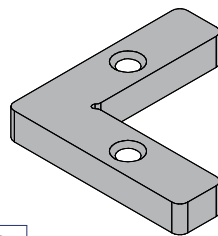
CF31 2350  
tapa terminal  
perfil CF31.4250

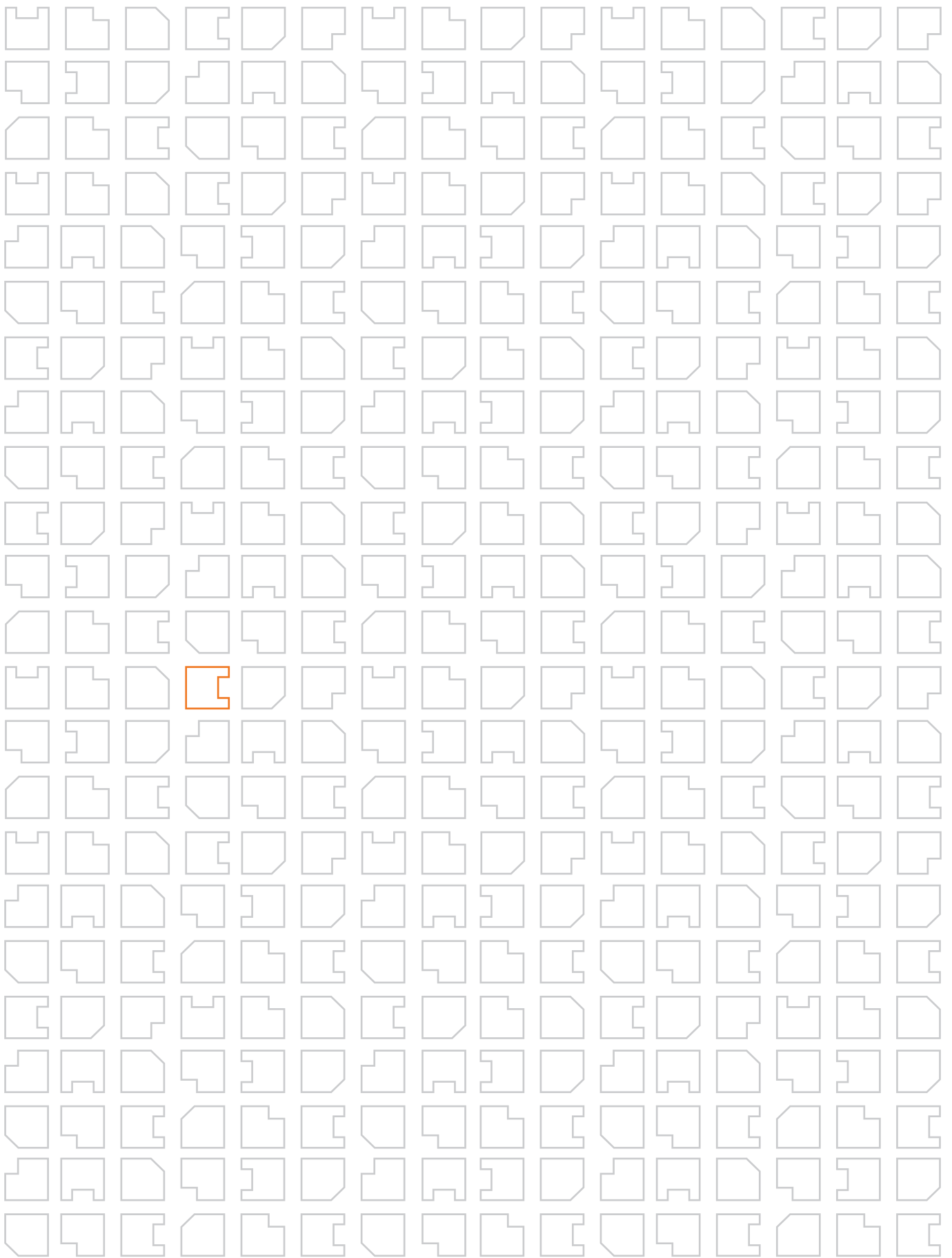


A000 4251  
tapas terminal KISS  
perfil CF31.4251

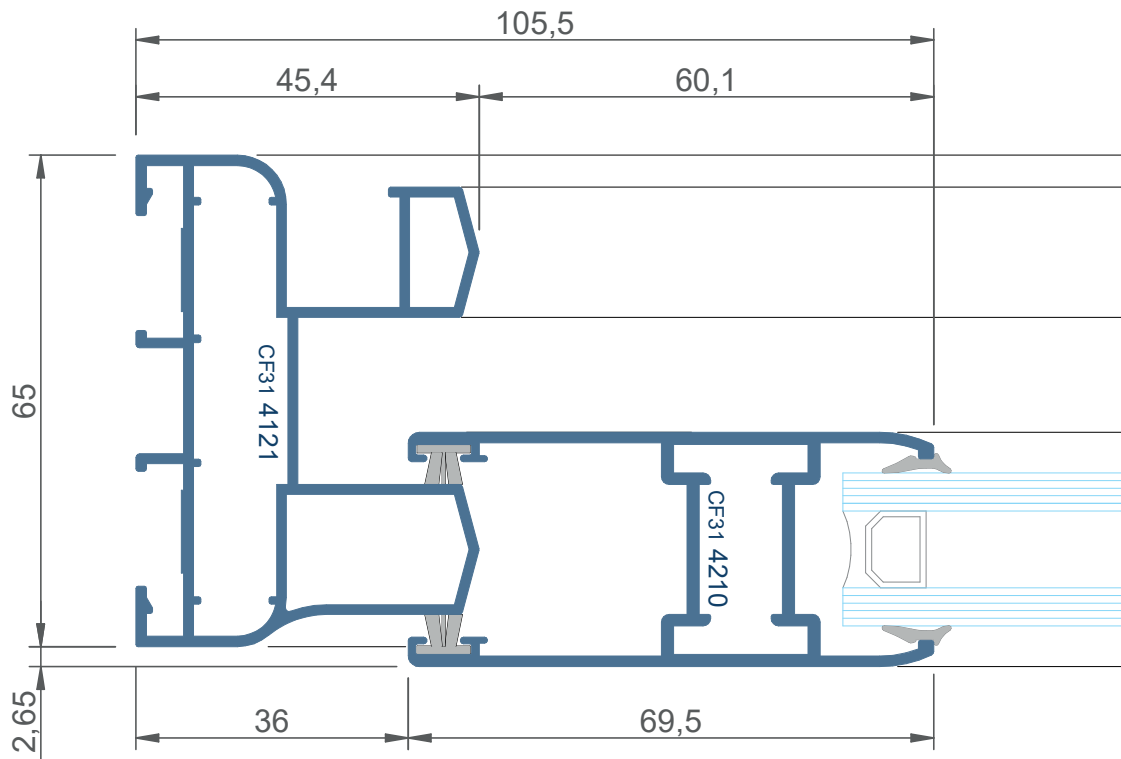
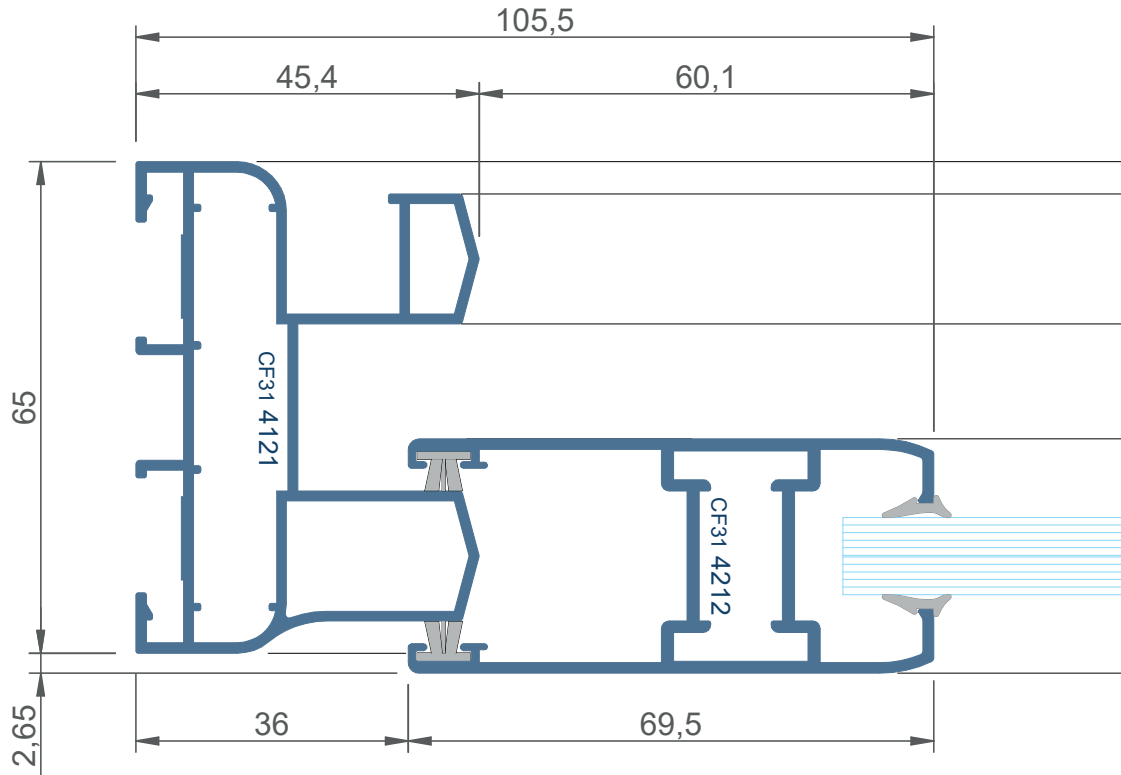


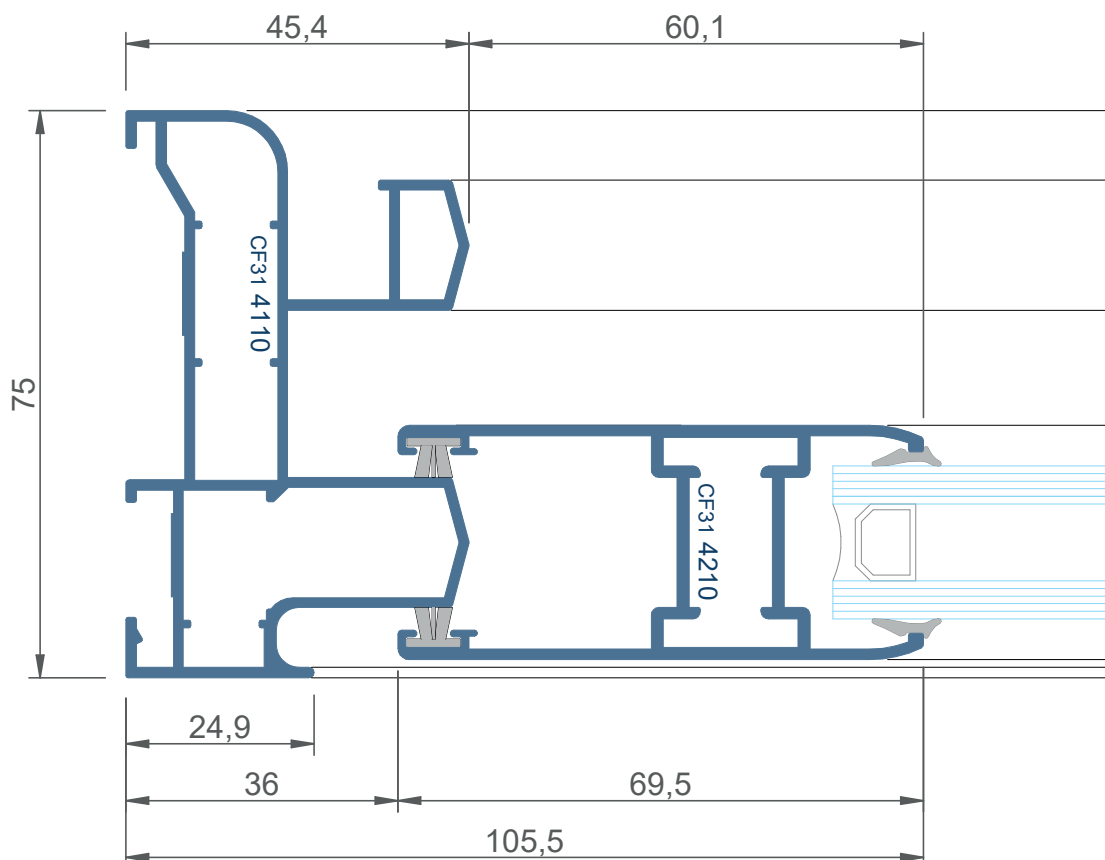
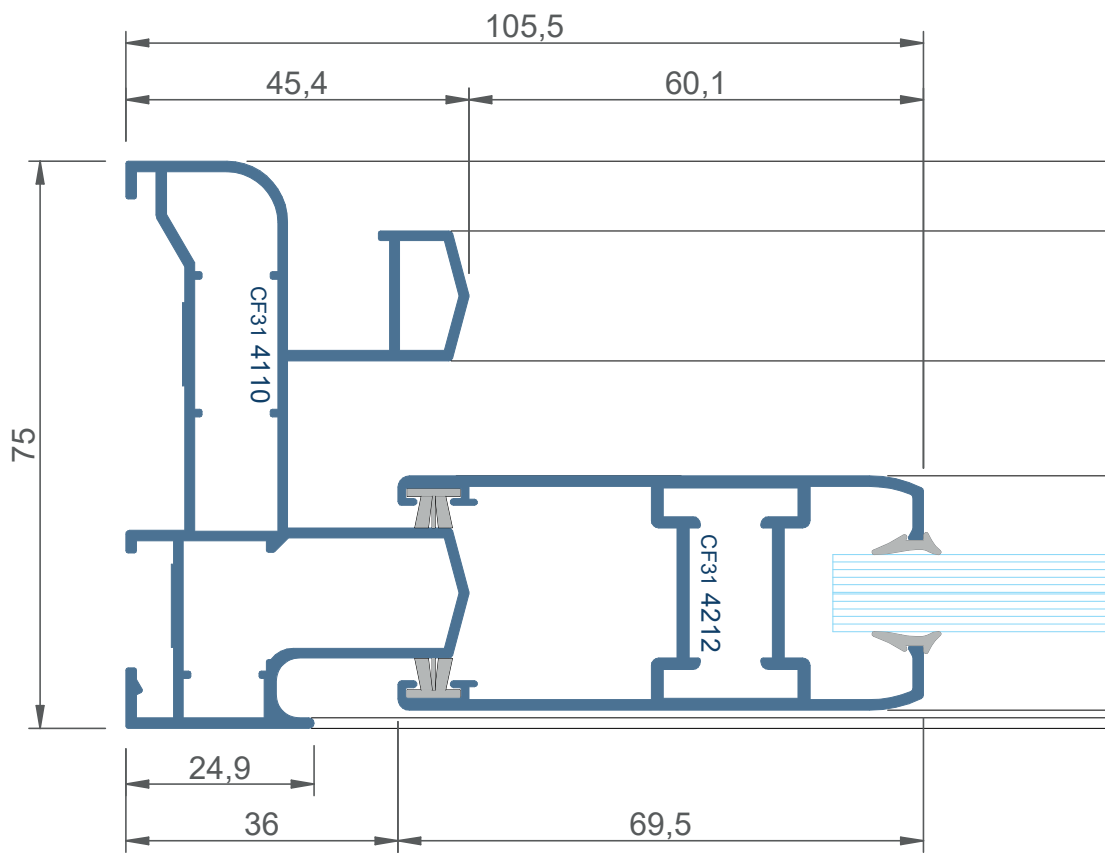
A00K 2110  
escuadra marco kiss 2110

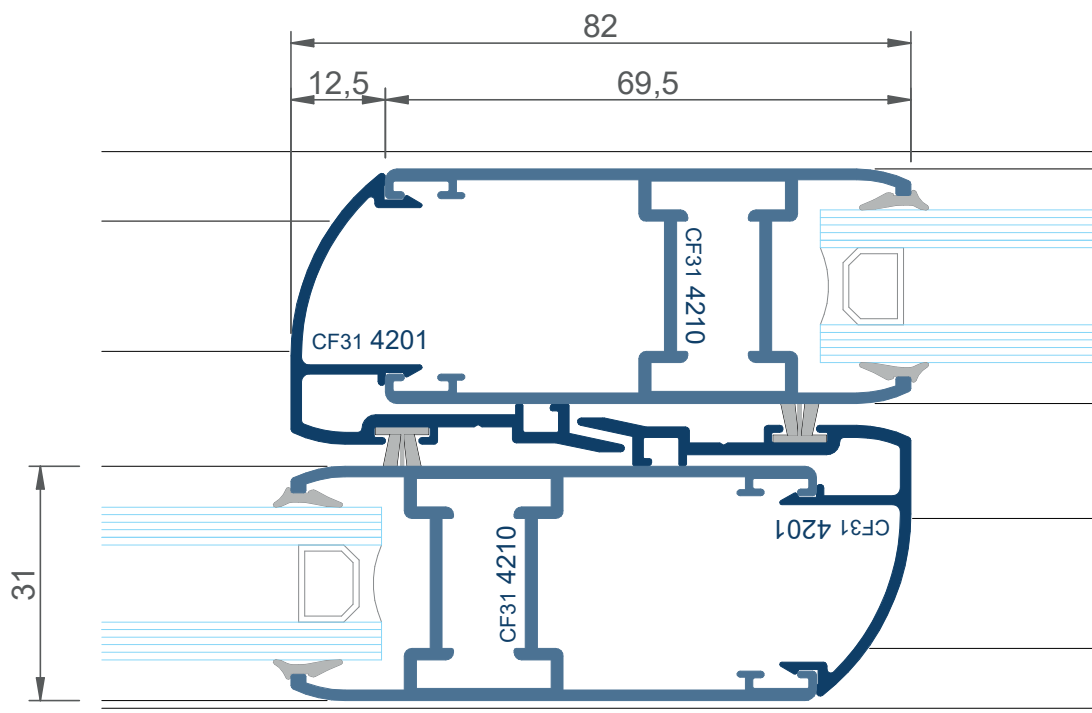
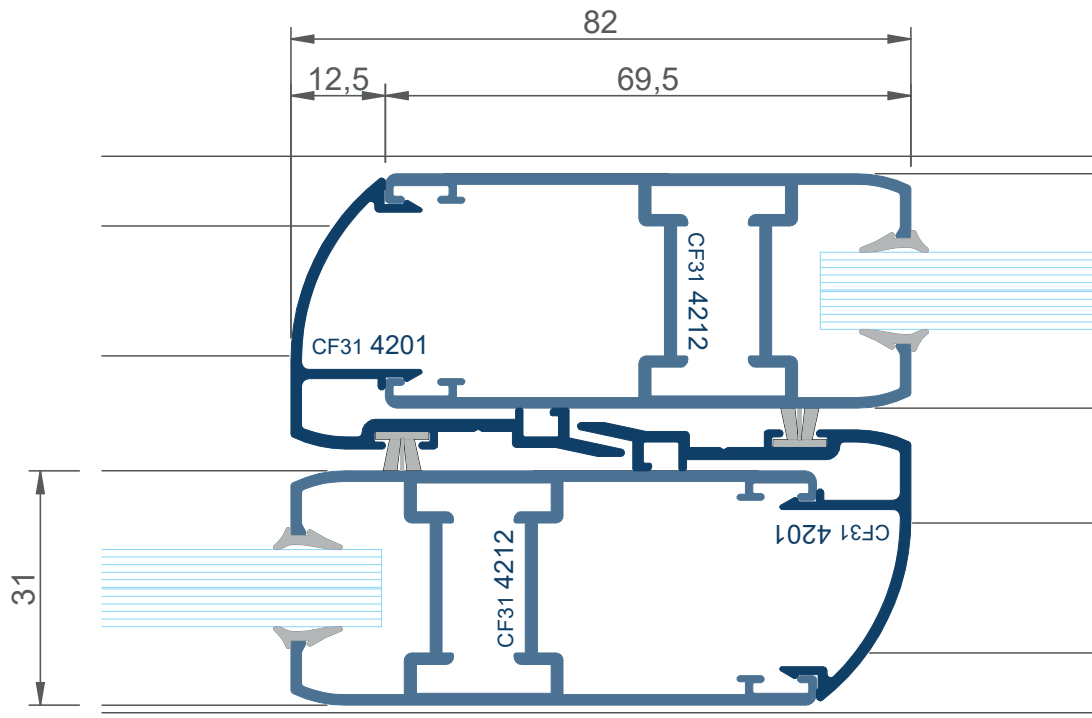


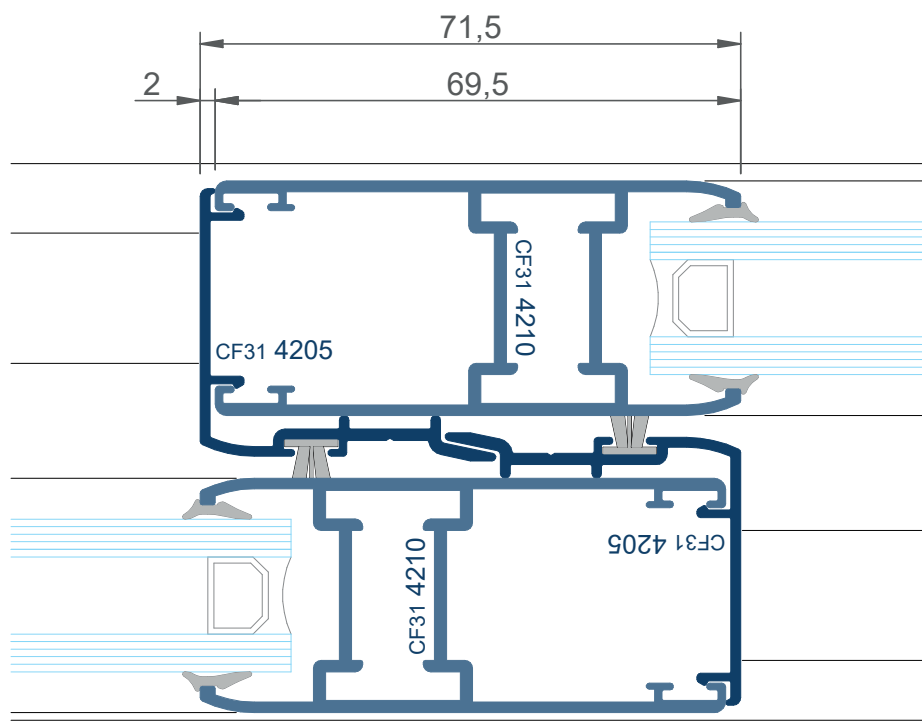
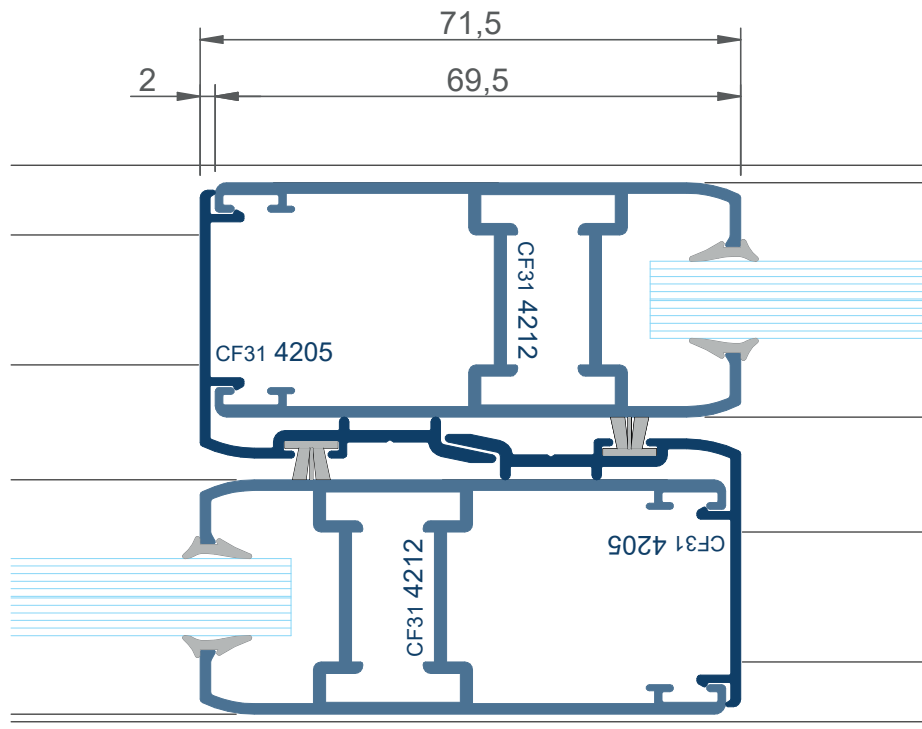


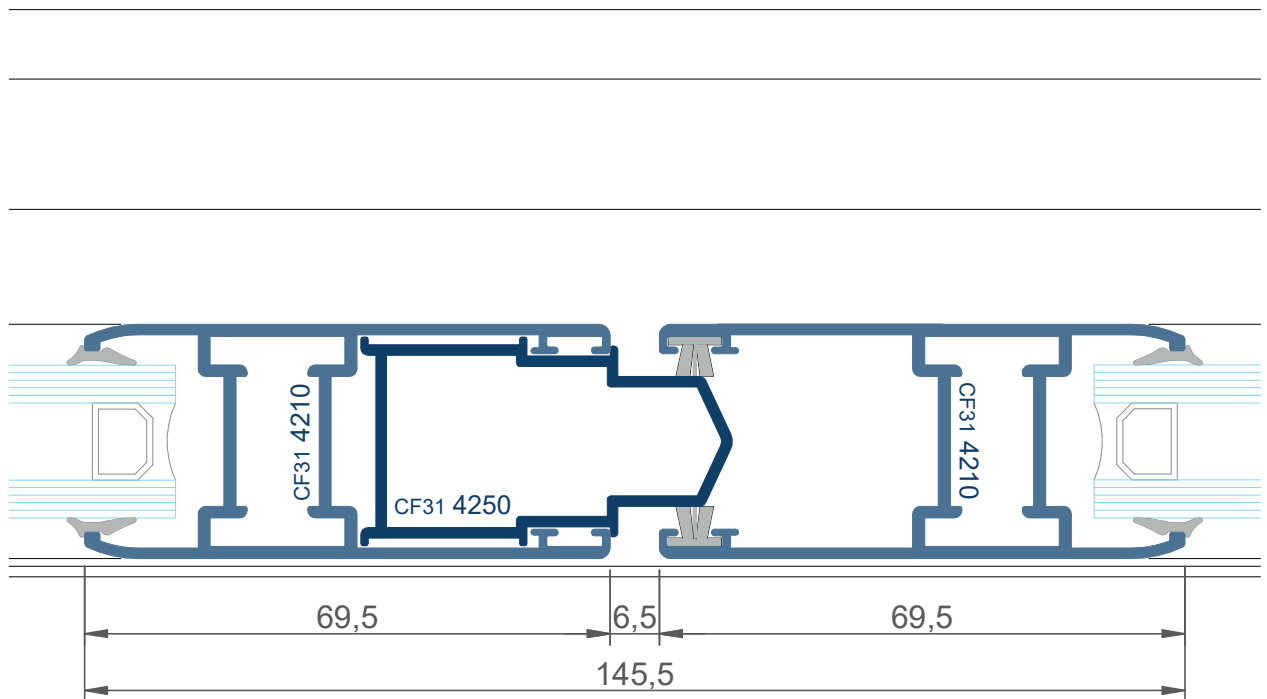
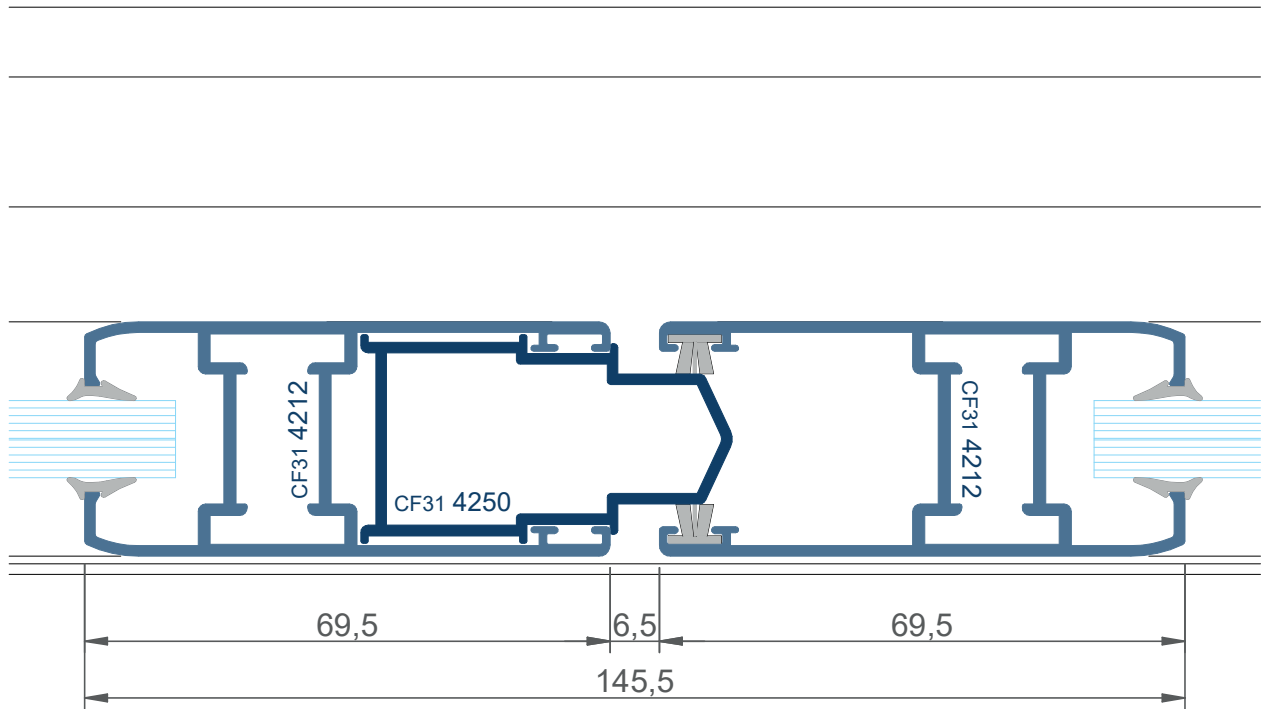


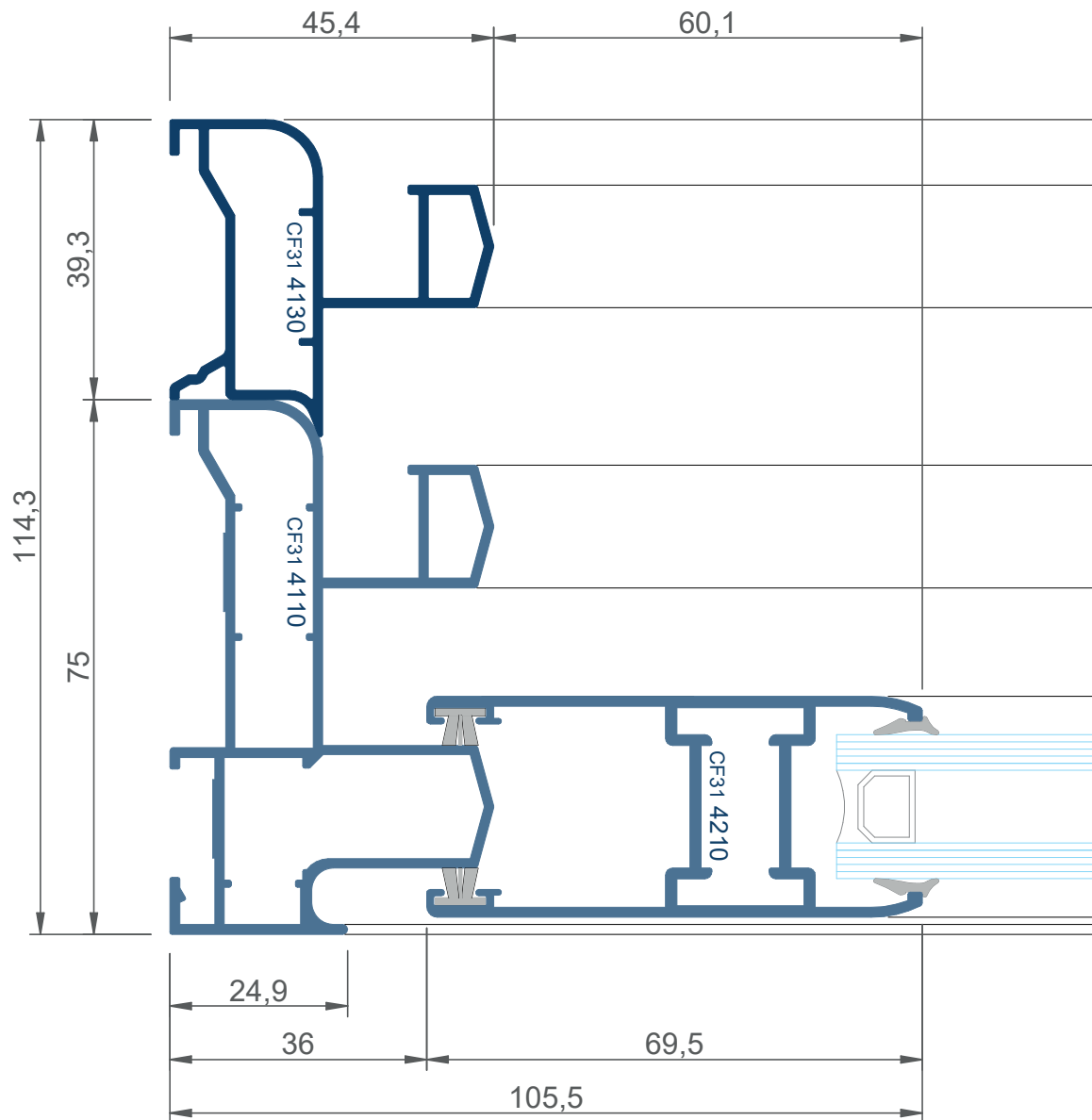


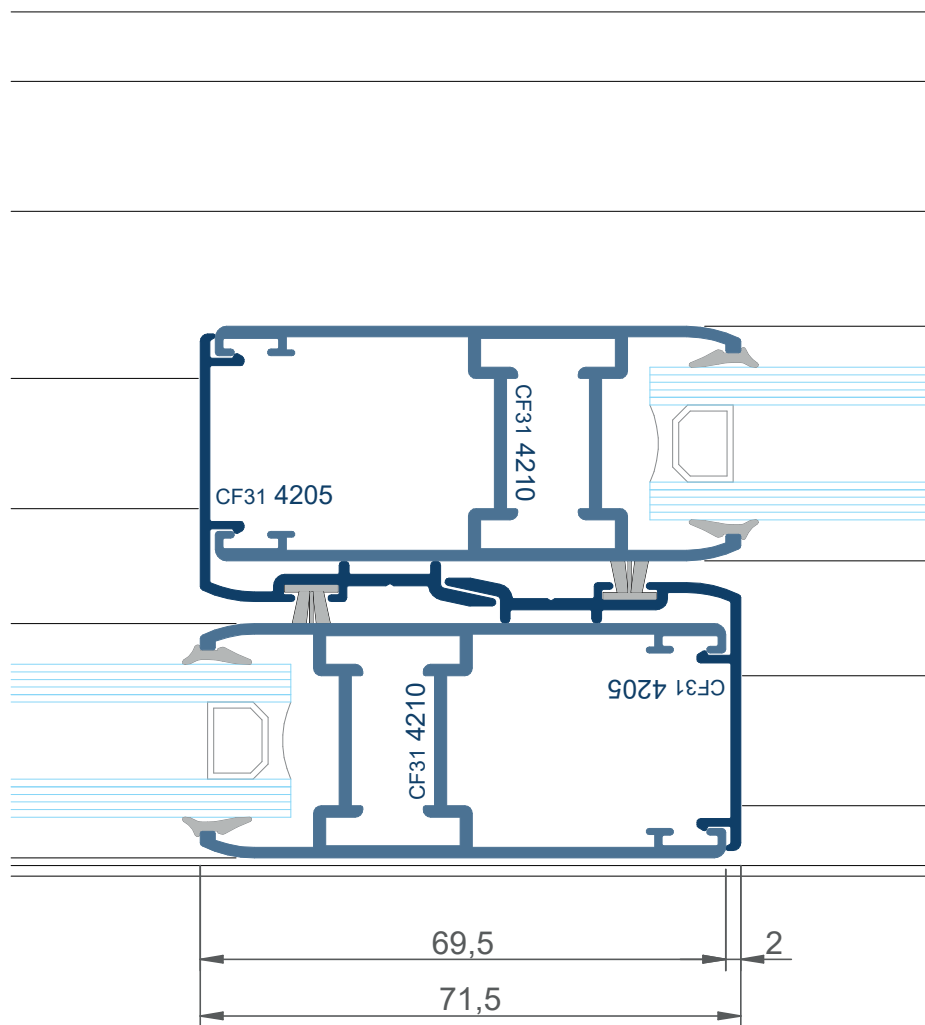


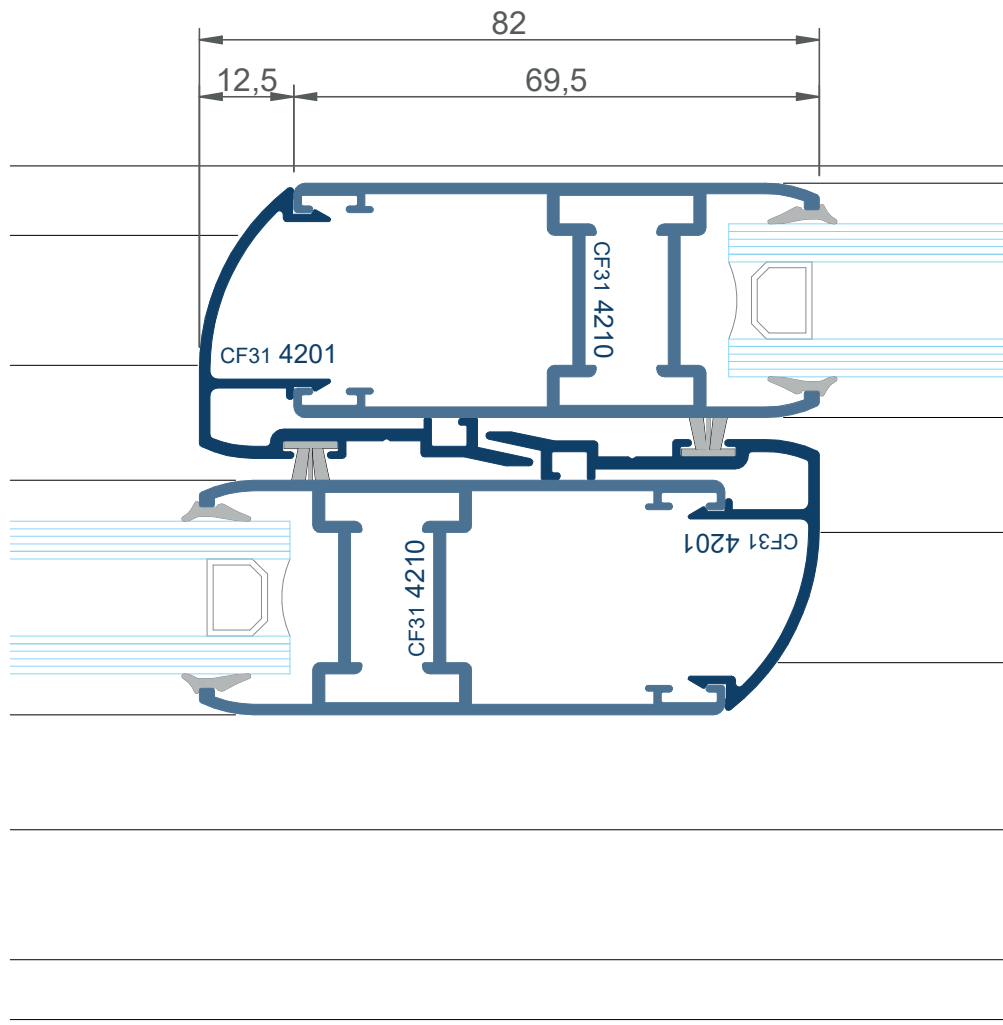




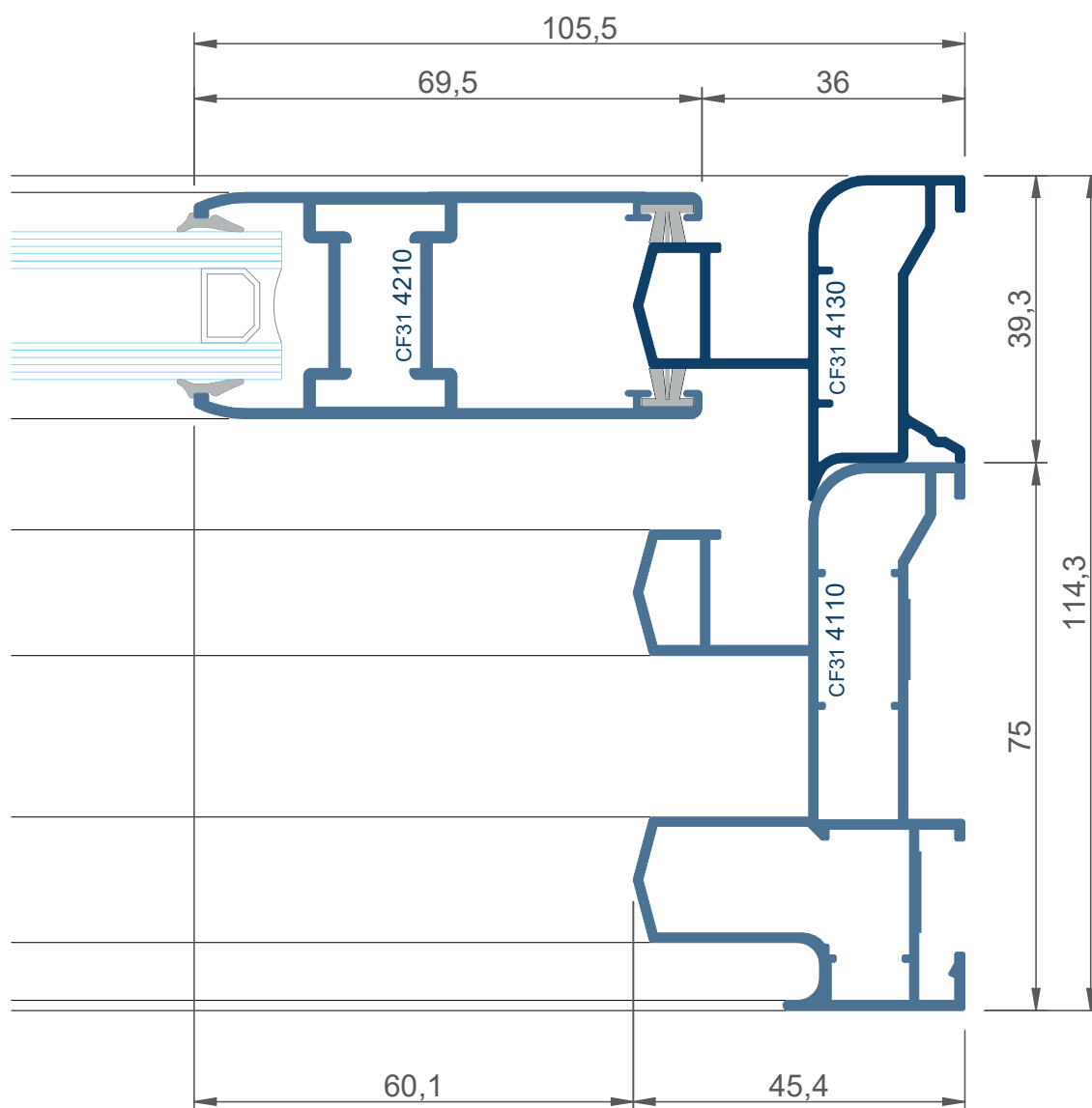


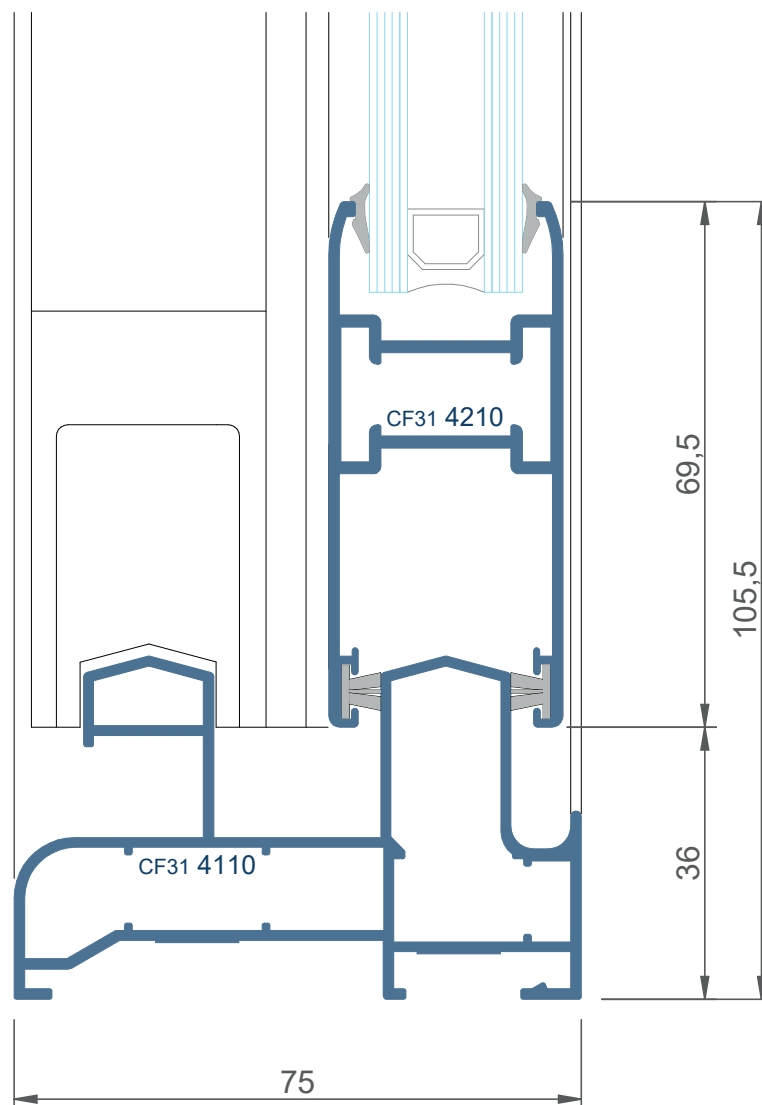


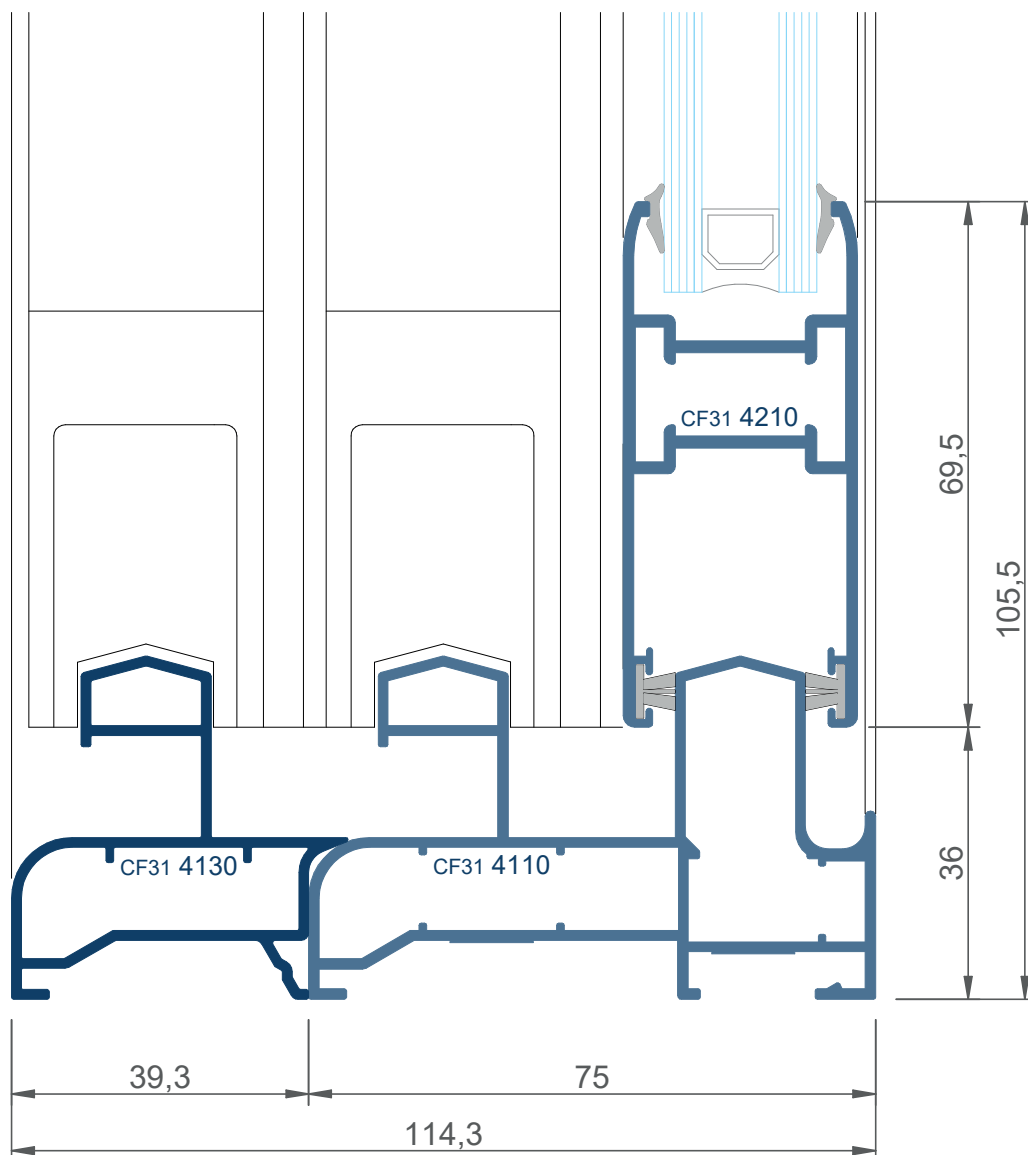


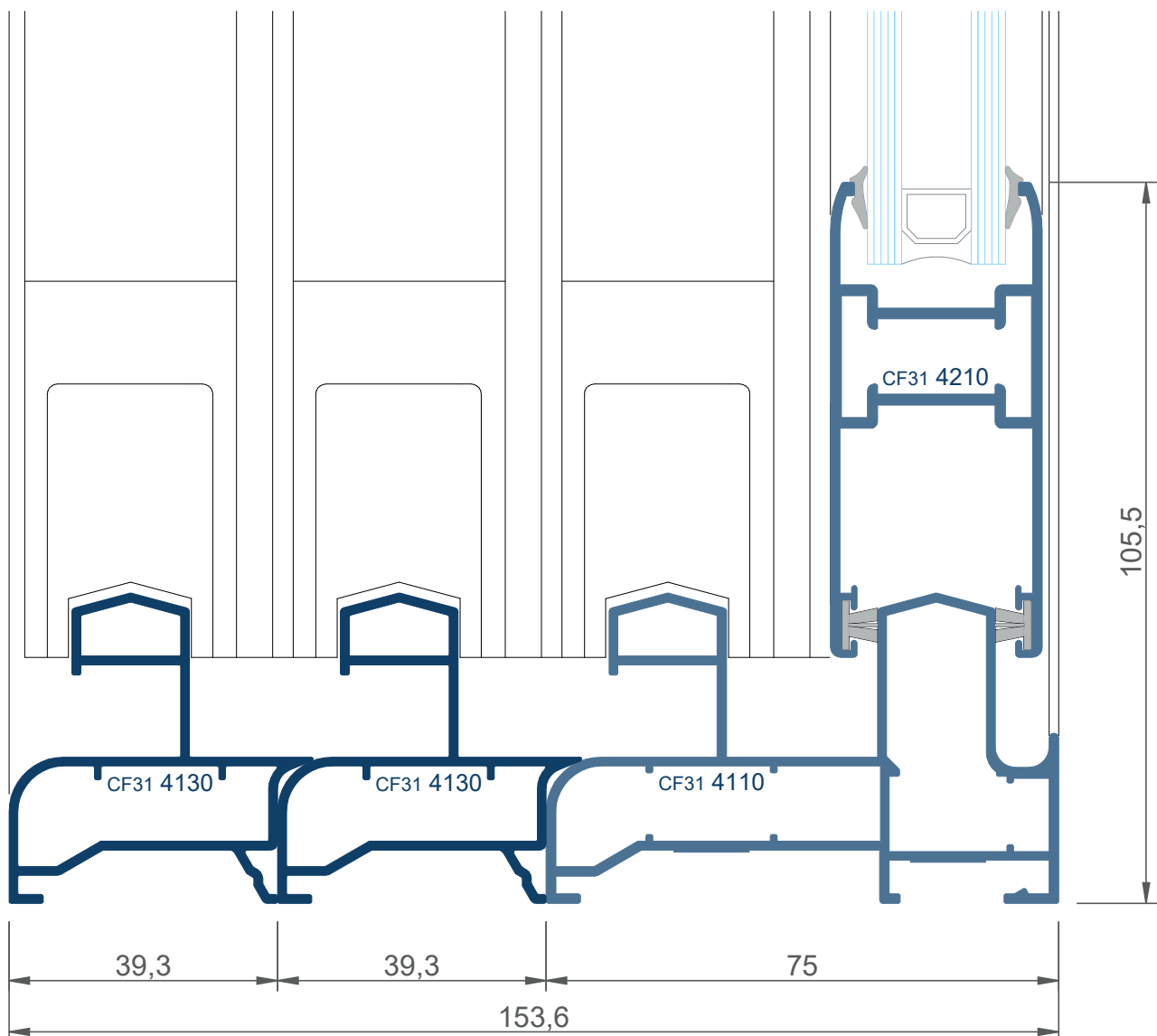


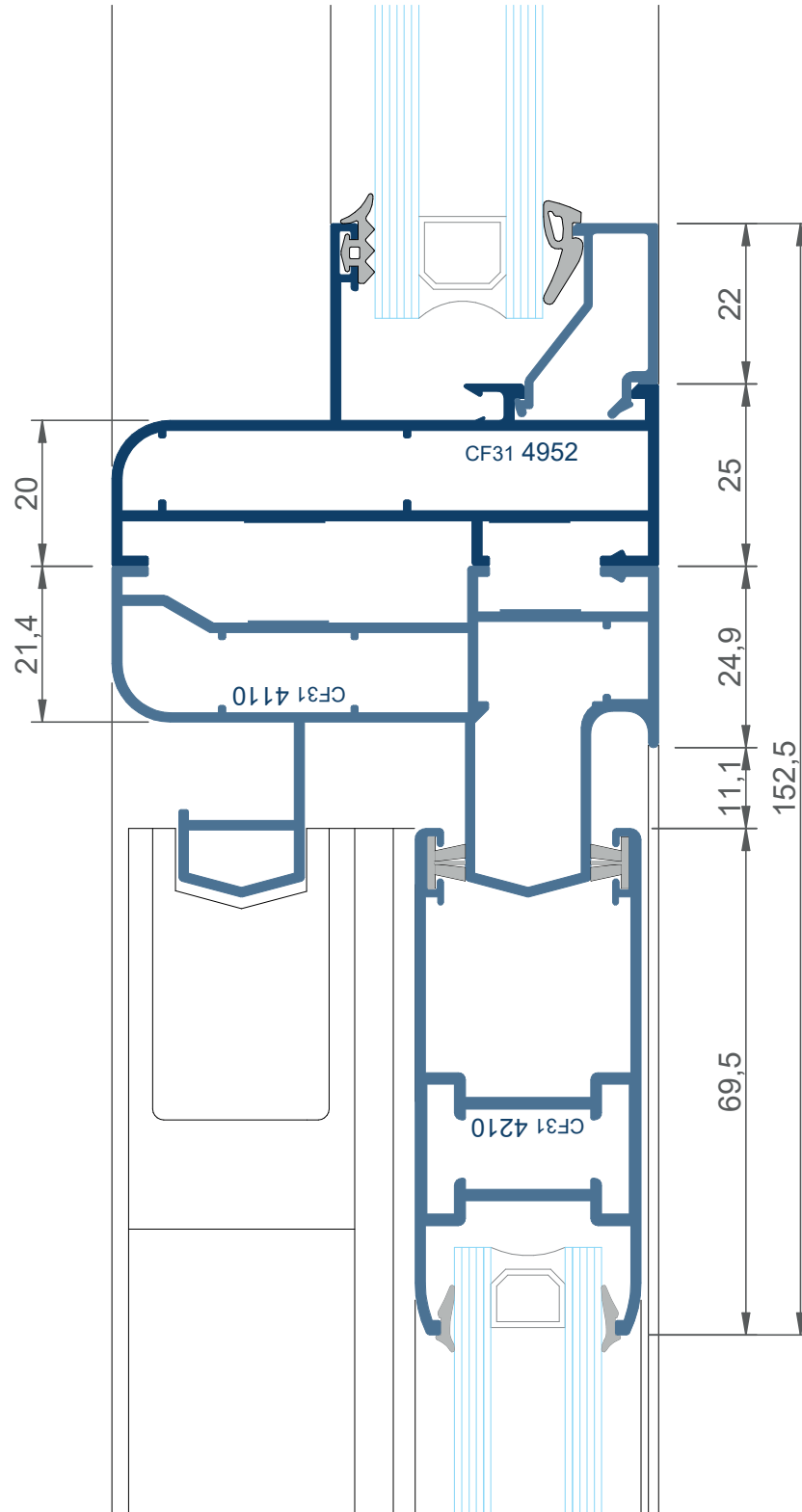


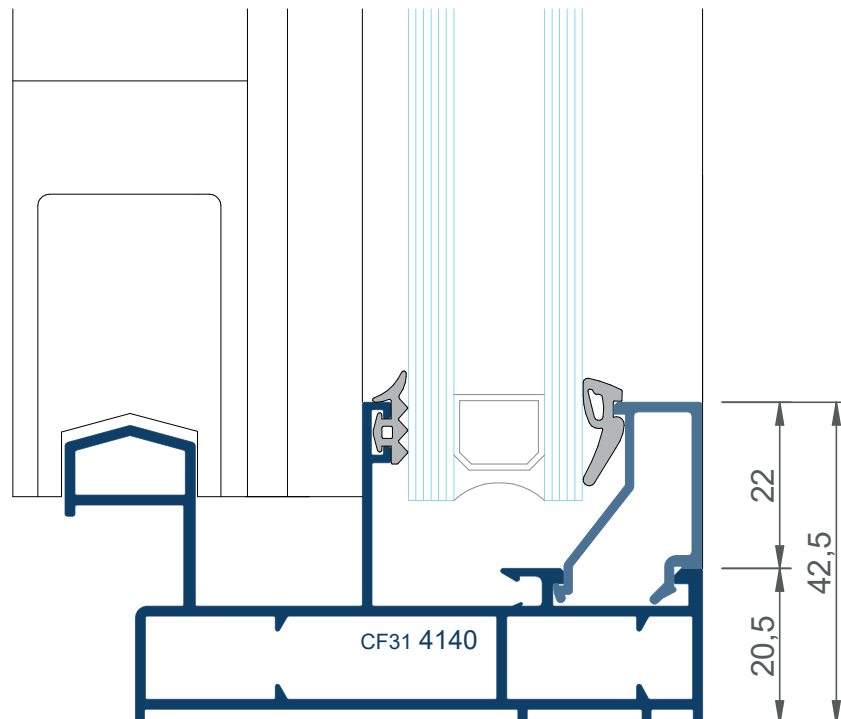
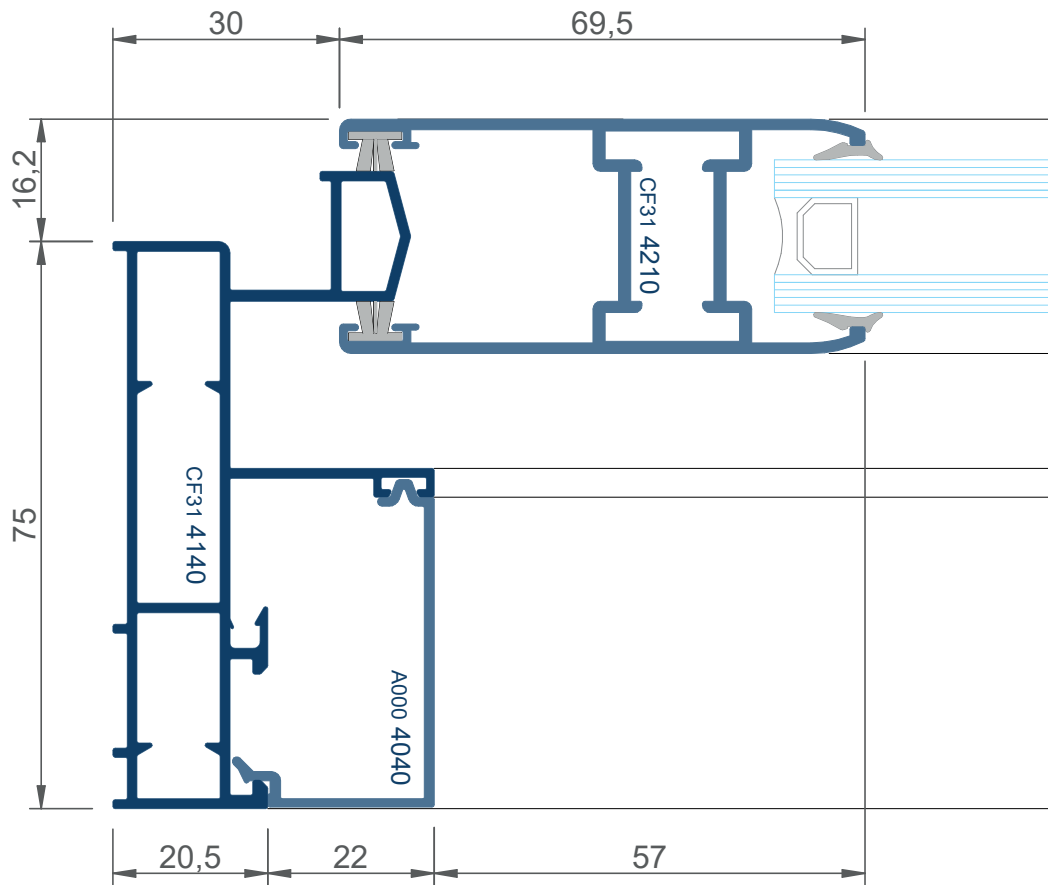


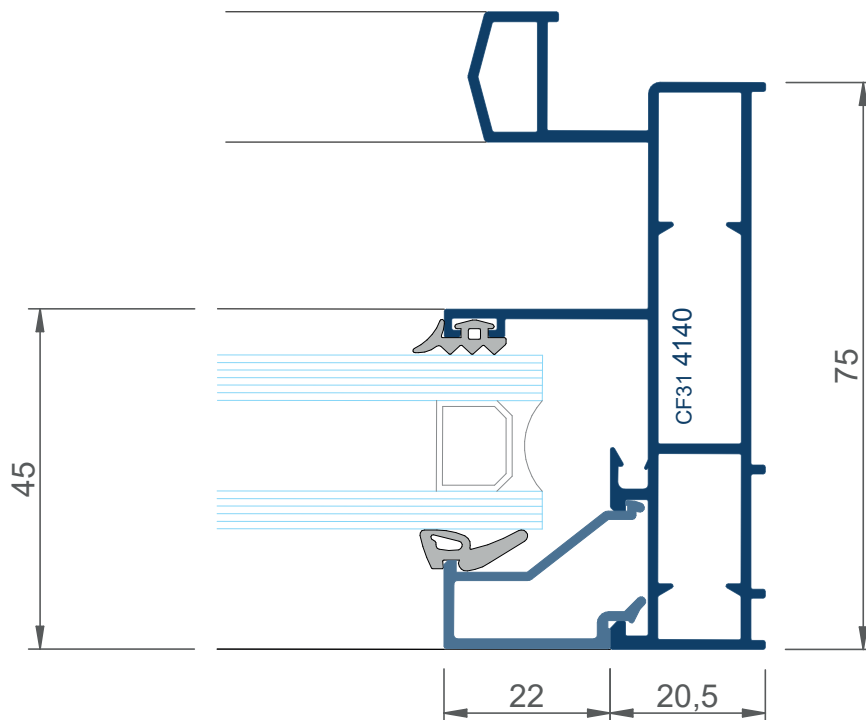
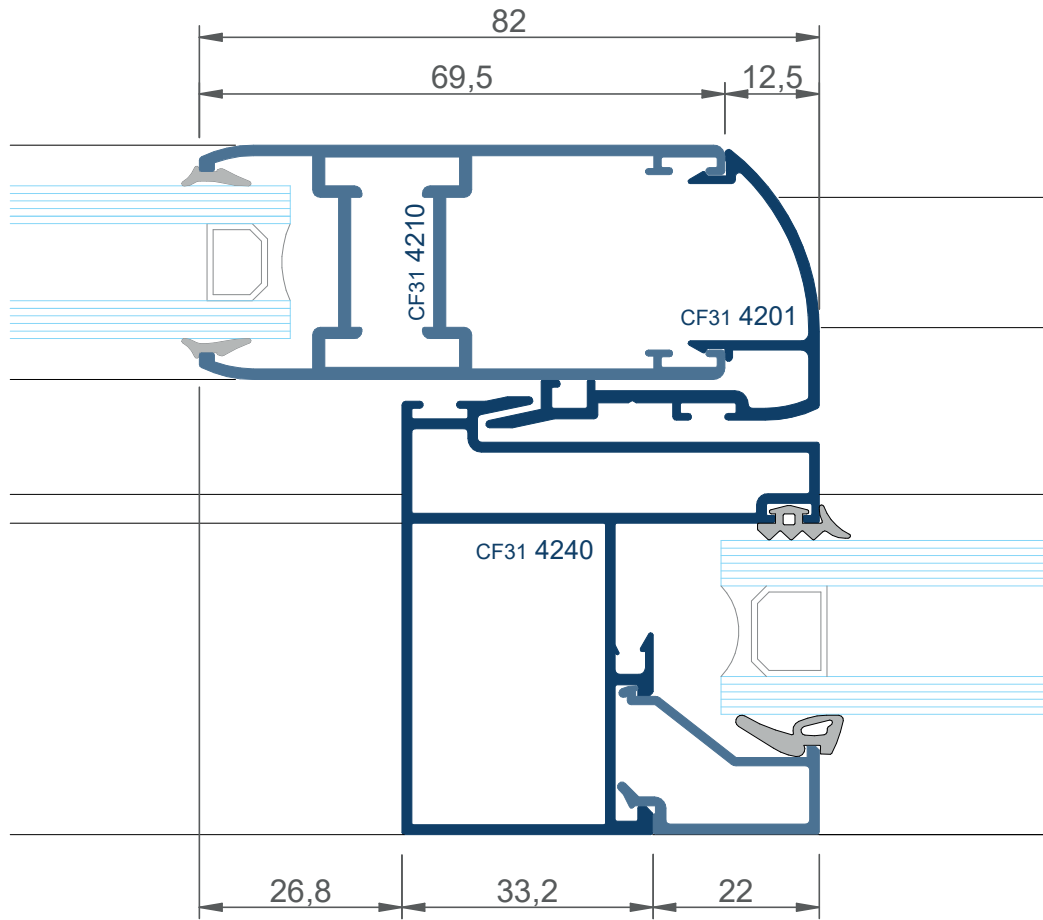


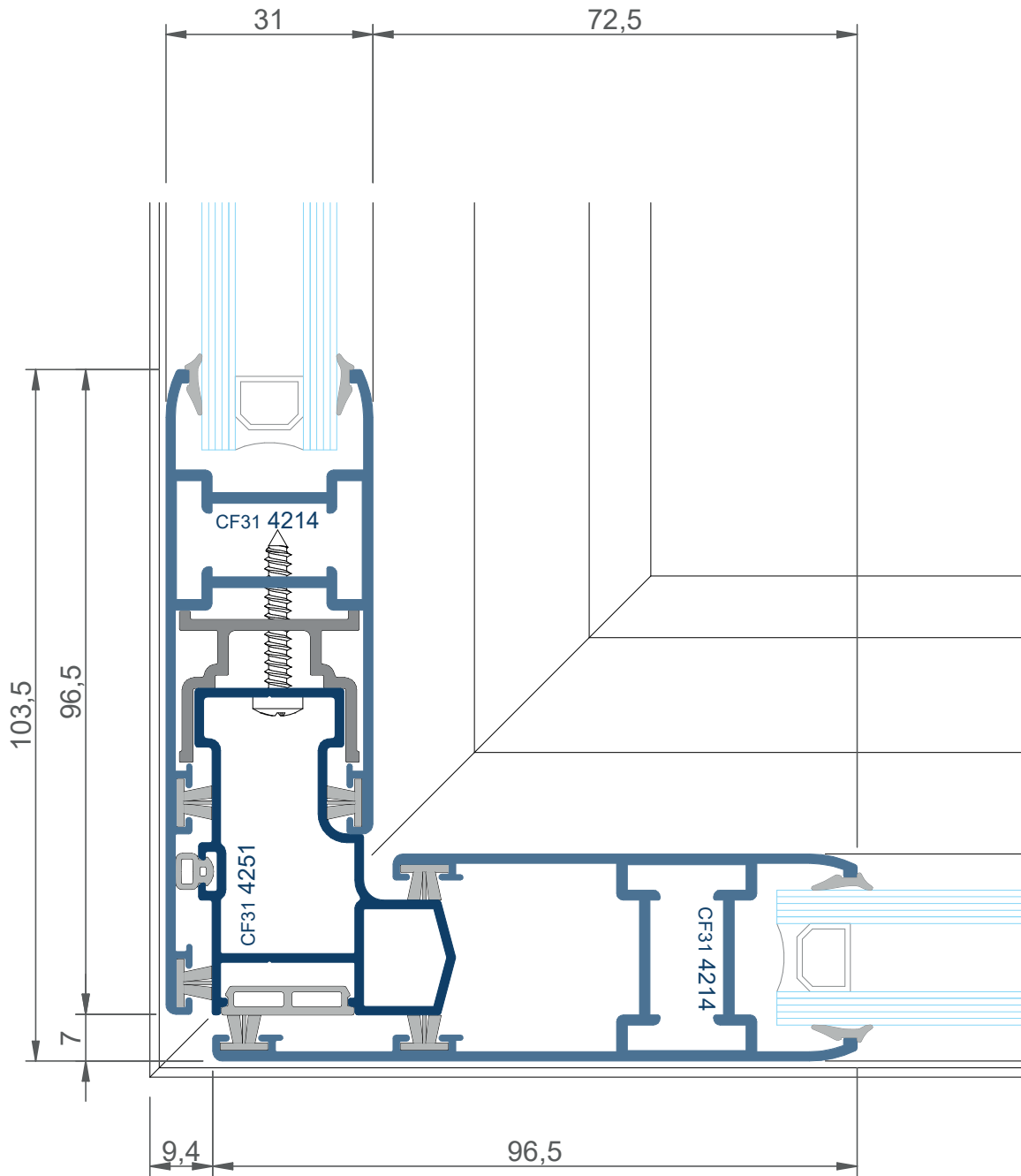




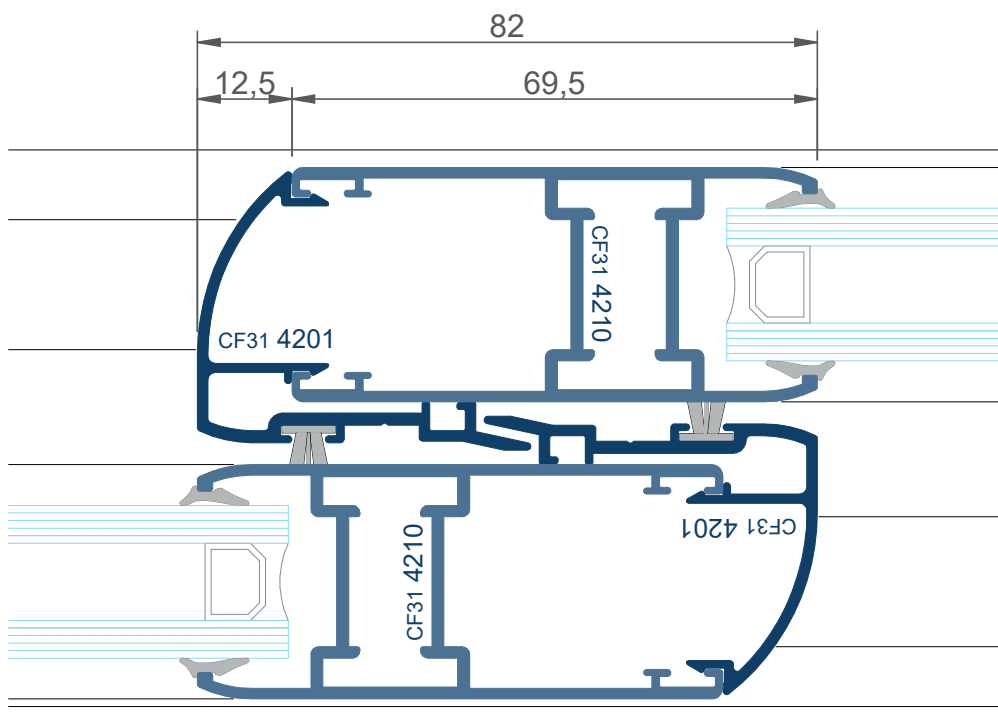


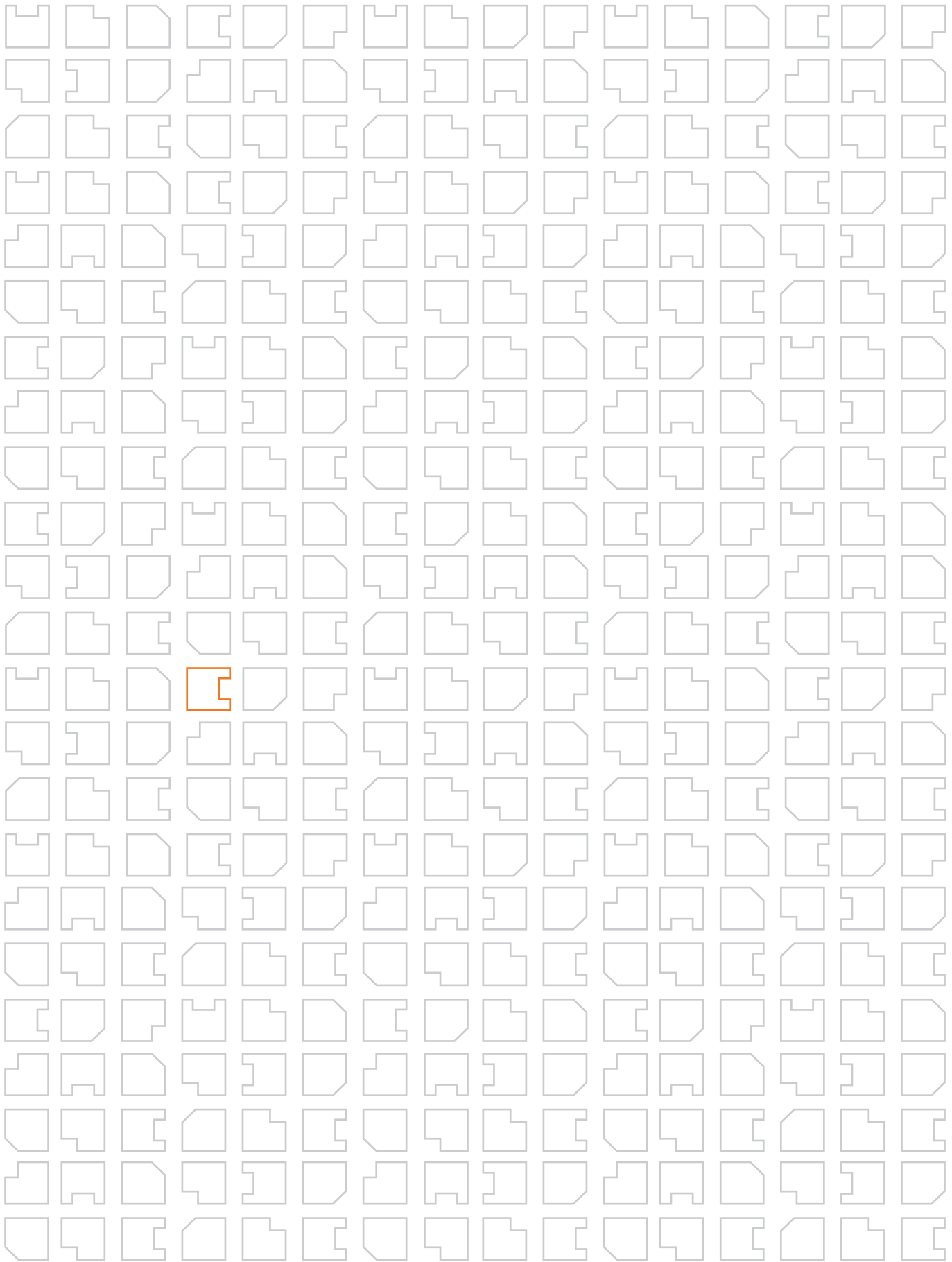


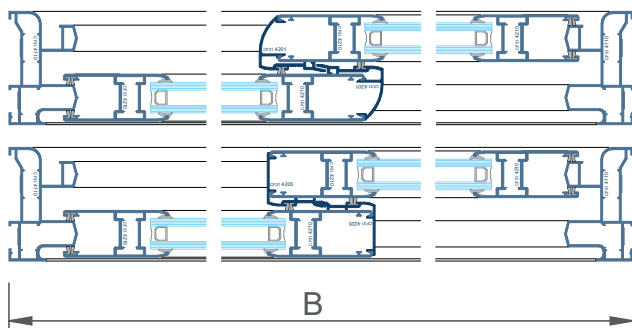
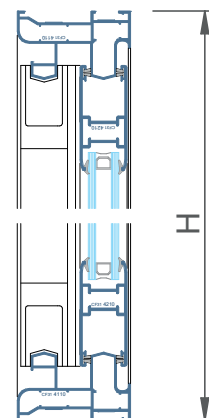
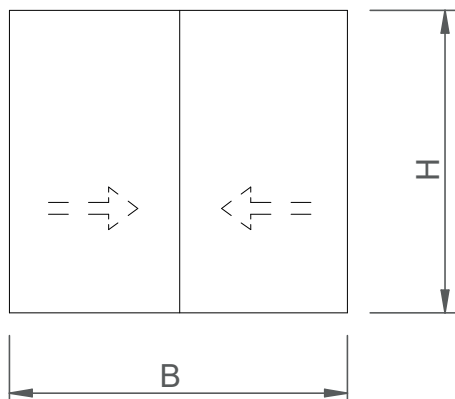








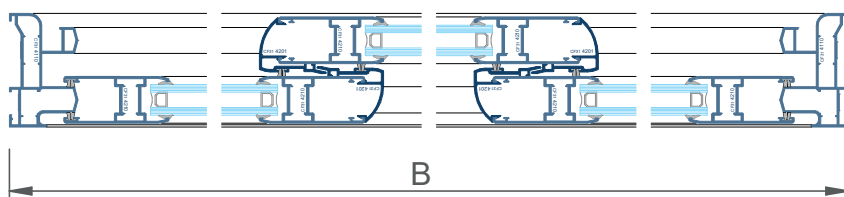
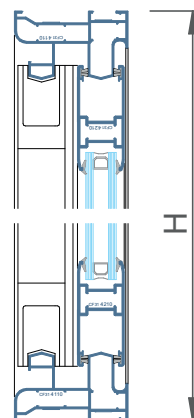
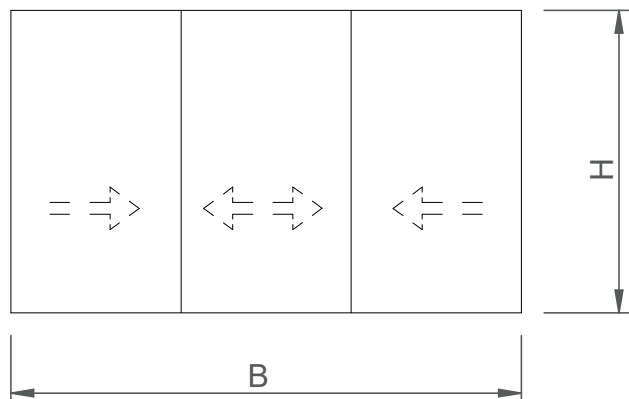




FORMULAS DE CORTE (CRUCE CURVO)			
	UDS	FORMULA	FORMA
marco horizontal	<b>CF31.4110</b>	2	B \---/
marco vertical	<b>CF31.4110</b>	2	H \---/
hoja horizontal	<b>CF31.4210</b>	4	(B-15)/2 \---/
hoja vertical	<b>CF31.4210</b>	4	H-71 \---/
perfil cruce central	<b>CF31.4201</b>	2	H-181  ---
vidrio	2	(B-245)/2 x H-187	

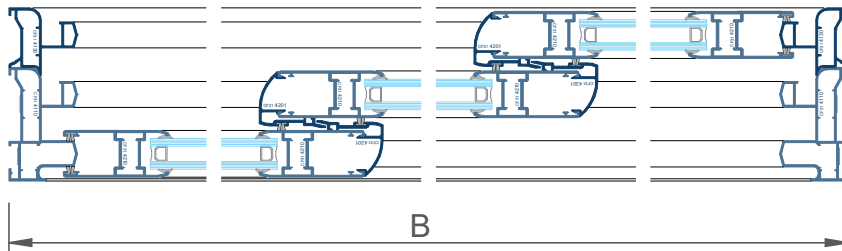
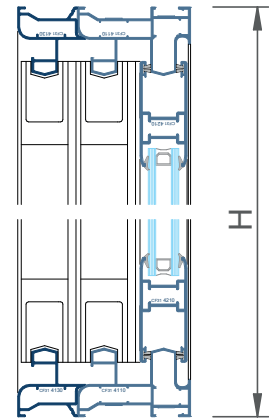
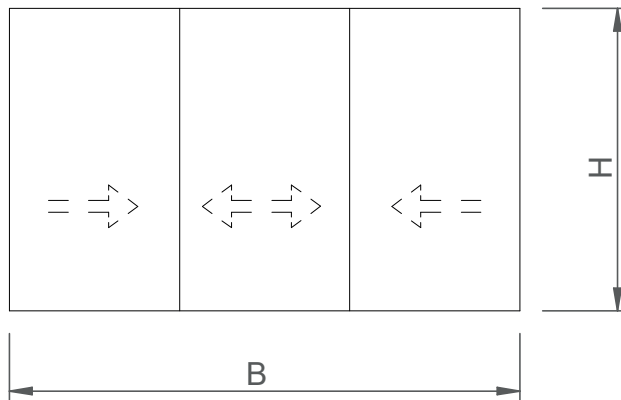
FORMULAS DE CORTE (CRUCE RECTO)			
	UDS	FORMULA	FORMA
marco horizontal	<b>CF31.4110</b>	2	B \---/
marco vertical	<b>CF31.4110</b>	2	H \---/
hoja horizontal	<b>CF31.4210</b>	4	(B-4)/2 \---/
hoja vertical	<b>CF31.4210</b>	4	H-71 \---/
perfil cruce central	<b>CF31.4205</b>	2	H-71  ---
vidrio	2	(B-235)/2 x H-187	

ACCESORIOS		
		UDS
escuadra marco y hoja	<b>A000.2110</b>	16
deflector con lamina	<b>A000.2300</b>	2
cortavientos superior	<b>A000.2346</b>	1
cortavientos inferior	<b>A000.2347</b>	1
juego piezas int hoja	<b>A000.2345</b>	2
juego tapas centrales hoja (solo CF314201)	<b>A000.2344</b>	2
ruedas	<b>A000.37XX</b>	4
cierre (según modelo)	ver D01 a D04	2
cepillo estanquidad 7x6	<b>A000.2376</b>	4B+6H



FORMULAS DE CORTE				
		UDS	FORMULA	FORMA
marco horizontal	<b>CF31.4110</b>	2	B	\---/
marco vertical	<b>CF31.4110</b>	2	H	\---/
hoja horizontal	<b>CF31.4210</b>	6	$(B+42)/3$	\---/
hoja vertical	<b>CF31.4210</b>	6	H-71	\---/
perfil cruce central	<b>CF31.4201</b>	4	H-181	---
vidrio		3	$(B-303)/3$	x H-187

ACCESORIOS		
		UDS
escuadra marco y hoja	<b>A000.2110</b>	16
deflector con lamina	<b>A000.2300</b>	3
cortavientos superior	<b>A000.2346</b>	2
cortavientos inferior	<b>A000.2347</b>	2
juego piezas int hoja	<b>A000.2345</b>	2
juego tapas centrales hoja	<b>A000.2344</b>	4
ruedas	<b>A000.37XX</b>	6
cierre (según modelo)	ver D01 a D04	2
cepillo estanquidad 7x6	<b>A000.2376</b>	4B+8H



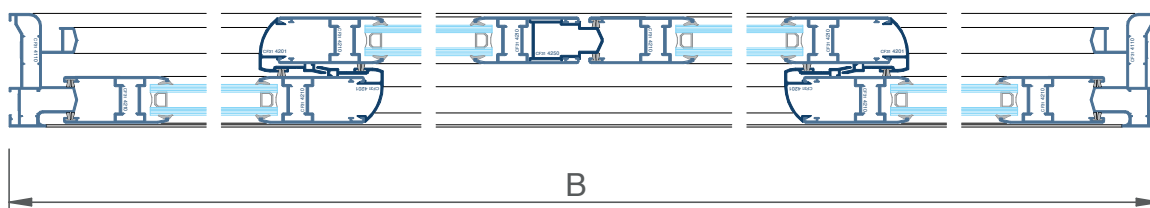
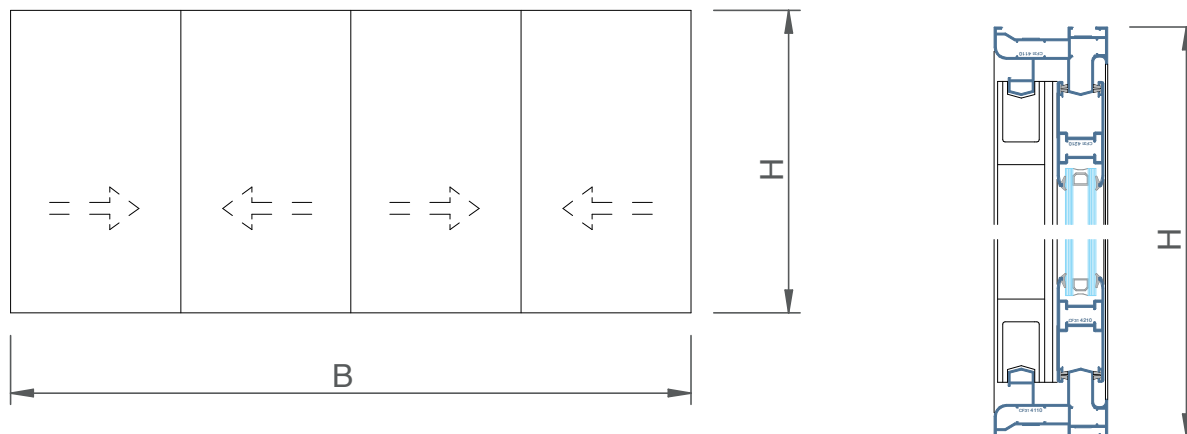
**FORMULAS DE CORTE**

		UDS	FORMULA	FORMA
marco horizontal	<b>CF31.4110</b>	2	B	\ --- /
marco vertical	<b>CF31.4110</b>	2	H	\ --- /
marco adicional horizontal	<b>CF31.4130</b>	2	B	\ --- /
marco adicional vertical	<b>CF31.4130</b>	2	H	\ --- /
hoja horizontal	<b>CF31.4210</b>	6	$(B+42)/3$	\ --- /
hoja vertical	<b>CF31.4210</b>	6	H-71	\ --- /
perfil cruce central	<b>CF31.4201</b>	4	H-181	---

vidrio 3  $(B-303)/3 \times H-187$

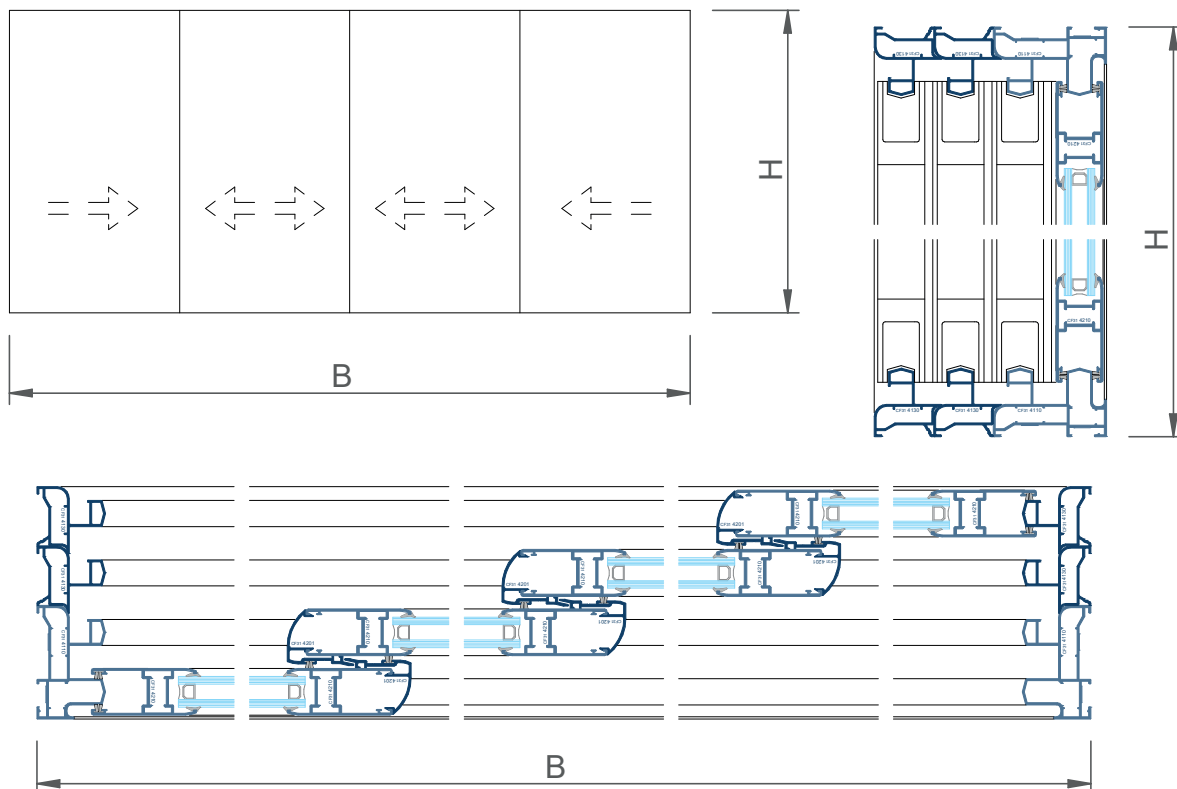
**ACCESORIOS**

		UDS
escuadra marco y hoja	<b>A000.2110</b>	24
deflector con lamina	<b>A000.2300</b>	3
cortavientos superior	<b>A000.2346</b>	2
cortavientos inferior	<b>A000.2347</b>	2
juego piezas int hoja	<b>A000.2345</b>	2
juego tapas centrales hoja	<b>A000.2344</b>	4
ruedas	<b>A000.37XX</b>	6
cierre (según modelo)	ver D01 a D04	2
cepillo estanquidad 7x6	<b>A000.2376</b>	4B+8H



FORMULAS DE CORTE				
		UDS	FORMULA	FORMA
marco horizontal	<b>CF31.4110</b>	2	B	\---/
marco vertical	<b>CF31.4110</b>	2	H	\---/
hoja horizontal	<b>CF31.4210</b>	6	$(B+35)/4$	\---/
hoja vertical	<b>CF31.4210</b>	6	H-71	\---/
perfil cruce central	<b>CF31.4201</b>	4	H-181	---
perfil encuentro central	<b>CF31.4250</b>	1	H-151	---
	vidrio	4	$(B-424)/4$	x H-187

ACCESORIOS		
		UDS
escuadra marco y hoja	<b>A000.2110</b>	24
deflector con lamina	<b>A000.2300</b>	3
cortavientos superior	<b>A000.2346</b>	2
cortavientos inferior	<b>A000.2347</b>	2
juego piezas int hoja	<b>A000.2345</b>	4
juego tapas centrales hoja	<b>A000.2344</b>	4
ruedas	<b>A000.37XX</b>	8
cierre (según modelo)	ver D01 a D04	3
tapa terminal perfil CF314250	<b>CF31.2350</b>	2
cepillo estanquidad 7x6	<b>A000.2376</b>	4B+10H



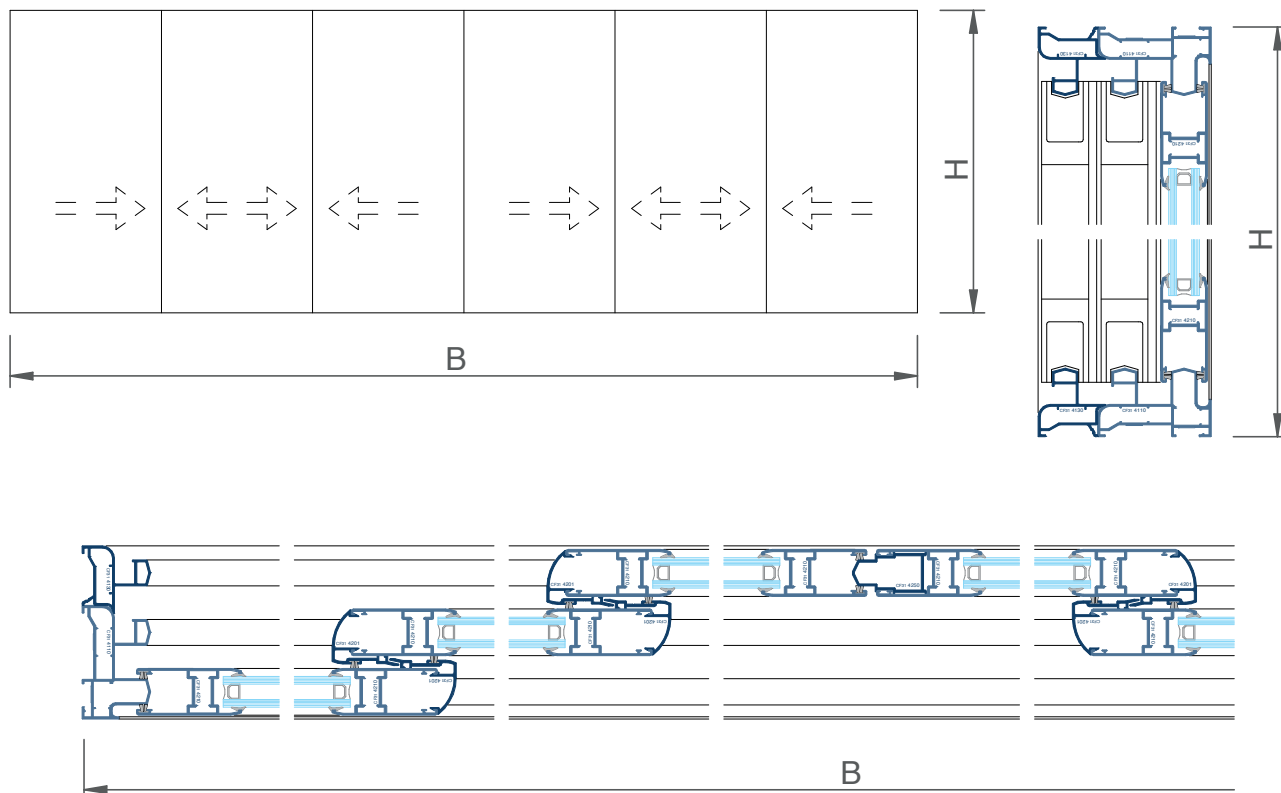
**FORMULAS DE CORTE**

		UDS	FORMULA	FORMA
marco horizontal	<b>CF31.4110</b>	2	B	\ --- /
marco vertical	<b>CF31.4110</b>	2	H	\ --- /
marco adicional horizontal	<b>CF31.4130</b>	4	B	\ --- /
marco adicional vertical	<b>CF31.4130</b>	4	H	\ --- /
hoja horizontal	<b>CF31.4210</b>	8	$(B+104)/4$	\ --- /
hoja vertical	<b>CF31.4210</b>	8	H-71	\ --- /
perfil cruce central	<b>CF31.4201</b>	6	H-181	---

vidrio 4  $(B-360)/4 \times H-187$

**ACCESORIOS**

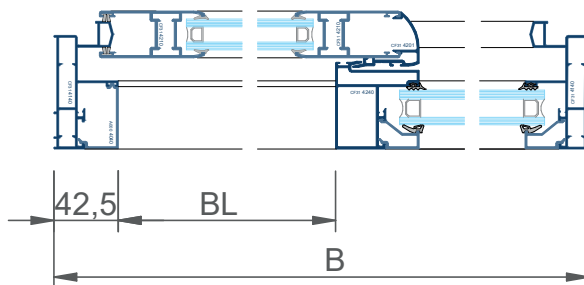
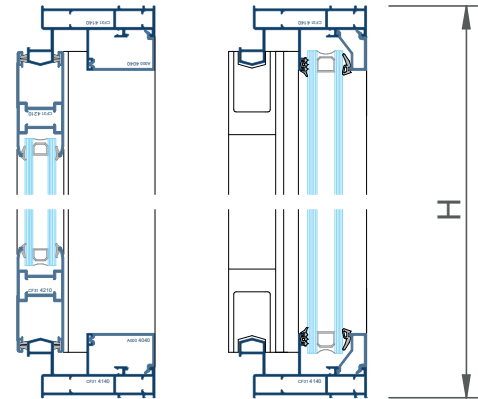
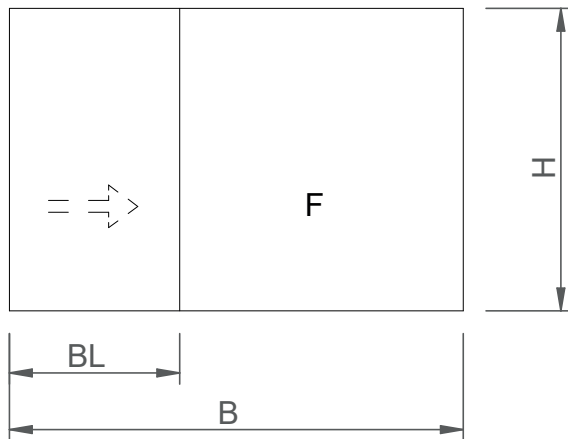
		UDS
escuadra marco y hoja	<b>A000.2110</b>	32
deflector con lamina	<b>A000.2300</b>	4
cortavientos superior	<b>A000.2346</b>	3
cortavientos inferior	<b>A000.2347</b>	3
juego piezas int hoja	<b>A000.2345</b>	2
juego tapas centrales hoja	<b>A000.2344</b>	6
ruedas	<b>A000.37XX</b>	8
cierre (según modelo)	ver D01 a D04	2
cepillo estanquidad 7x6	<b>A000.2376</b>	4B+10H



FORMULAS DE CORTE				
		UDS	FORMULA	FORMA
marco horizontal	<b>CF31.4110</b>	2	B	\---/
marco vertical	<b>CF31.4110</b>	2	H	\---/
marco adicional horizontal	<b>CF31.4130</b>	2	B	\---/
marco adicional vertical	<b>CF31.4130</b>	2	H	\---/
hoja horizontal	<b>CF31.4210</b>	12	$(B+150)/6$	\---/
hoja vertical	<b>CF31.4210</b>	12	H-71	\---/
perfil cruce central	<b>CF31.4201</b>	8	H-181	---
perfil encuentro central	<b>CF31.4250</b>	1	H-151	---
vidrio	6		$(B-540)/6$	x H-187

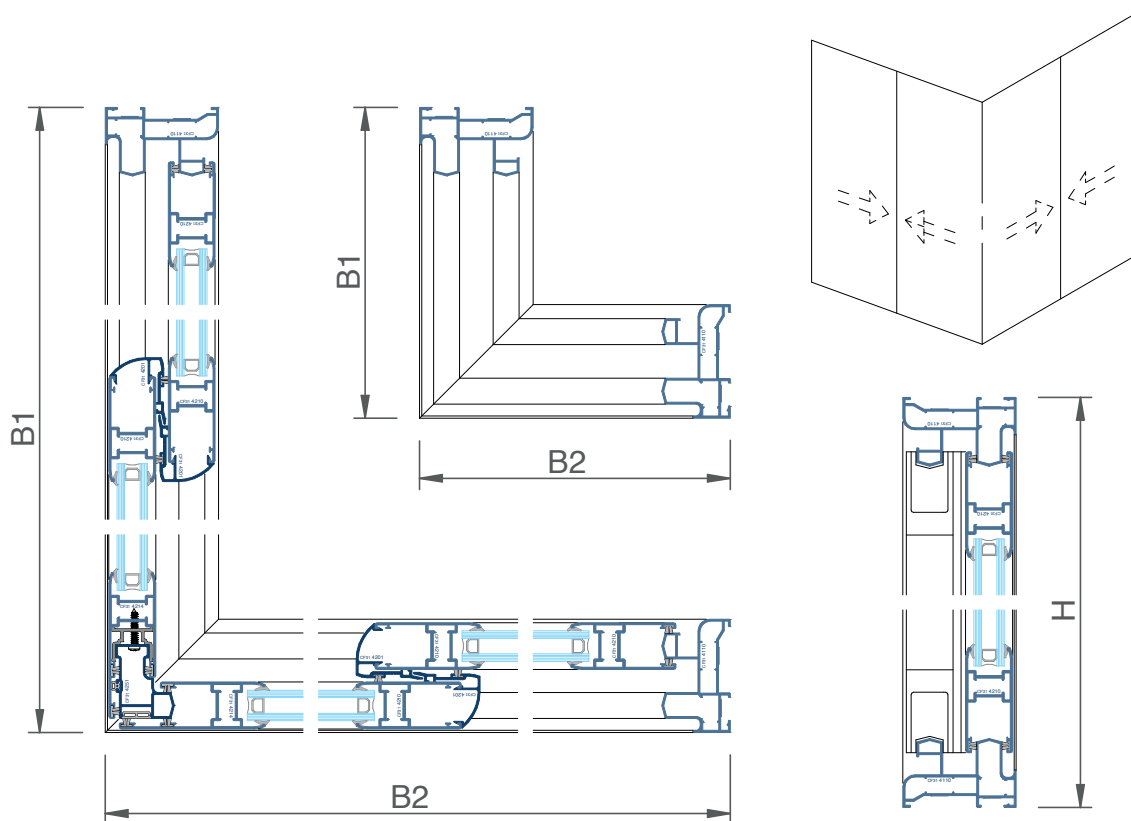
ACCESORIOS		
		UDS
escuadra marco y hoja	<b>A000.2110</b>	36
deflector con lamina	<b>A000.2300</b>	6
cortavientos superior	<b>A000.2346</b>	4
cortavientos inferior	<b>A000.2347</b>	4
juego piezas int hoja	<b>A000.2345</b>	4
juego tapas centrales hoja	<b>A000.2344</b>	8
ruedas	<b>A000.37XX</b>	12
cierre (según modelo)	ver D01 a D04	3
tapa terminal perfil CF314250	<b>CF31.2350</b>	2
cepillo estanquidad 7x6	<b>A000.2376</b>	4B+14H





FORMULAS DE CORTE				
		UDS	FORMULA	FORMA
marco horizontal	<b>CF31.4140</b>	2	B	\---/
marco vertical	<b>CF31.4140</b>	2	H	\---/
cubierta horizontal paso	<b>A000.4040</b>	2	BL	---
cubierta vertical paso	<b>A000.4040</b>	1	H-41	---
hoja horizontal	<b>CF31.4210</b>	2	BL+55	\---/
hoja vertical	<b>CF31.4210</b>	2	H-60	\---/
perfil cruce central	<b>CF31.4201</b>	1	H-170	---
montante cruce	<b>CF31.4240</b>	1	H-32	---
junquillo horizontal	<b>A000.45XX</b>	2	(B-BL)-96	---
junquillo vertical	<b>A000.45XX</b>	2	H-84	---
vidrio fijo	1		(B-BL)-114 x H-61	
vidrio hoja	1		BL-60 x H-175	

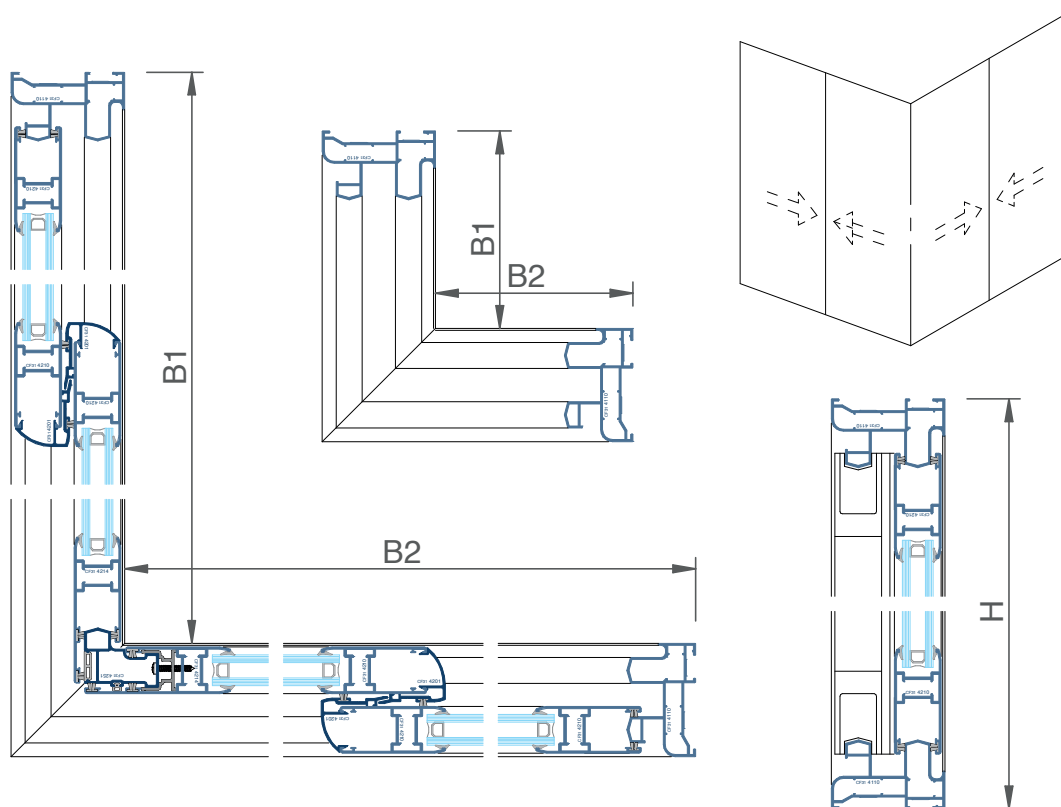
ACCESORIOS		
		UDS
escuadra marco y hoja	<b>A000.2110</b>	12
deflector con lamina	<b>A000.2300</b>	2
pieza union perfil CF314240	<b>A000.2120</b>	2
cortavientos superior	<b>A000.2346</b>	1
cortavientos inferior	<b>A000.2347</b>	1
juego piezas int hoja	<b>A000.2345</b>	1
juego tapas centrales hoja	<b>A000.2344</b>	1
ruedas	<b>A000.37XX</b>	2
cierre (según modelo)	ver D01 a D04	1
cepillo estanquidad 7x6	<b>A000.2376</b>	5BL+4H



FORMULAS DE CORTE (ZONA B1)					
		UDS	FORMULA	FORMA	OBSERVACIONES
marco horizontal	CF31.4110	2	B1	\-G- /	girar perfil al cortar
marco vertical	CF31.4110	1	H	\--- /	
hoja horizontal	CF31.4210	4	$(B1-15)/2$	\--- /	
hoja vertical	CF31.4210	3	H-71	\--- /	
hoja central kiss	CF31.4214	1	H-17	\--- /	recortar puntas (27mm)
perfil cruce	CF31.4201	2	H-181	---	
vidrio		2	$(B1-253)/2 \times H-187$		

FORMULAS DE CORTE (ZONA B2)					
		UDS	FORMULA	FORMA	OBSERVACIONES
marco horizontal	CF31.4110	2	B2	\-G- /	girar perfil al cortar
marco vertical	CF31.4110	1	H	\--- /	
hoja horizontal	CF31.4210	4	$(B2-15)/2$	\--- /	
hoja vertical	CF31.4210	3	H-71	\--- /	
hoja central kiss	CF31.4214	1	H-17	\--- /	recortar puntas (27mm)
perfil cruce kiss	CF31.4251	1	H-106	---	mecanizar según detalle
perfil cruce	CF31.4201	2	H-181	---	
vidrio		2	$(B2-253)/2 \times H-187$		

ACCESORIOS		
		UDS
escuadra marco y hoja	A000.2110	24
deflector con lamina	A000.2300	4
cortavientos superior	A000.2346	2
cortavientos inferior	A000.2347	2
juego piezas int hoja	A000.2345	4
juego tapas centrales hoja	A000.2344	4
ruedas	A000.37XX	8
cierre (según modelo)	ver D01 a D04	3
junta perfil CF314251	CF31.2352	1H
juego tapas perfil CF314251	A000.4251	1
cepillo estanquidad 7x6	A000.2376	$4(B1+B2)+14H$
escuadra marco kiss	A00K.2110	4



FORMULAS DE CORTE (ZONA B1)					
		UDS	FORMULA	FORMA	OBSERVACIONES
marco horizontal	CF31.4110	2	B1+75	\-G- /	girar perfil al cortar
marco vertical	CF31.4110	1	H	\--- /	
hoja horizontal	CF31.4210	4	(B1+20)/2	\--- /	
hoja vertical	CF31.4210	3	H-71	\--- /	
hoja central kiss	CF31.4214	1	H-17	\--- /	recortar puntas (27mm)
perfil cruce	CF31.4201	2	H-181	---	
vidrio	2		(B1-216)/2 x H-187		

FORMULAS DE CORTE (ZONA B2)					
		UDS	FORMULA	FORMA	OBSERVACIONES
marco horizontal	CF31.4110	2	B2+75	\-G- /	girar perfil al cortar
marco vertical	CF31.4110	1	H	\--- /	
hoja horizontal	CF31.4210	4	(B2+20)/2	\--- /	
hoja vertical	CF31.4210	3	H-71	\--- /	
hoja central kiss	CF31.4214	1	H-17	\--- /	recortar puntas (27mm)
perfil cruce kiss	CF31.4251	1	H-106	---	mecanizar según detalle
perfil cruce	CF31.4201	2	H-181	---	
vidrio	2		(B2-216)/2 x H-187		

ACCESORIOS		
		UDS
escuadra marco y hoja	A000.2110	24
deflector con lamina	A000.2300	4
cortavientos superior	A000.2346	2
cortavientos inferior	A000.2347	2
juego piezas int hoja	A000.2345	4
juego tapas centrales hoja	A000.2344	4
ruedas	A000.37XX	8
cierre (según modelo)	ver D01 a D04	3
junta perfil CF314251	CF31.2352	1H
juego tapas perfil CF314251	A000.4251	1
cepillo estanquidad 7x6	A000.2376	4(B1+B2)+14H
escuadra marco kiss	A00K.2110	4

**THERMIA**<sup>®</sup>

B A R C E L O N A

Ventanas para vivir mejor

#### **Sede Central en Barcelona**

C/ Narcís Monturiol, 34  
08192 Sant Quirze del Vallès  
Barcelona (España)  
Tel. +34 937 121 237  
contacto@thermiabarcelona.com  
Síguenos en   

#### **Delegación Área Andina**

Los Telares, 289  
Urbanización Industrial Vulcano  
Ate, Lima (Perú)  
Tel. +51-1-7197649

#### **Showrooms**

##### **Barcelona**

Narcís Monturiol, 34  
08192 Sant Quirze Valles  
Tel. +34 937 121 237

##### **Lima**

Paseo de la República, 3583  
2o. Piso - San Isidro  
Tel. +51-1-7197649

##### **Girona**

Carrer Sant Jordi, 2  
Local 4 - Sarrià de Ter  
Tel. +34 937 121 237

**THERMIABARCELONA.COM**