

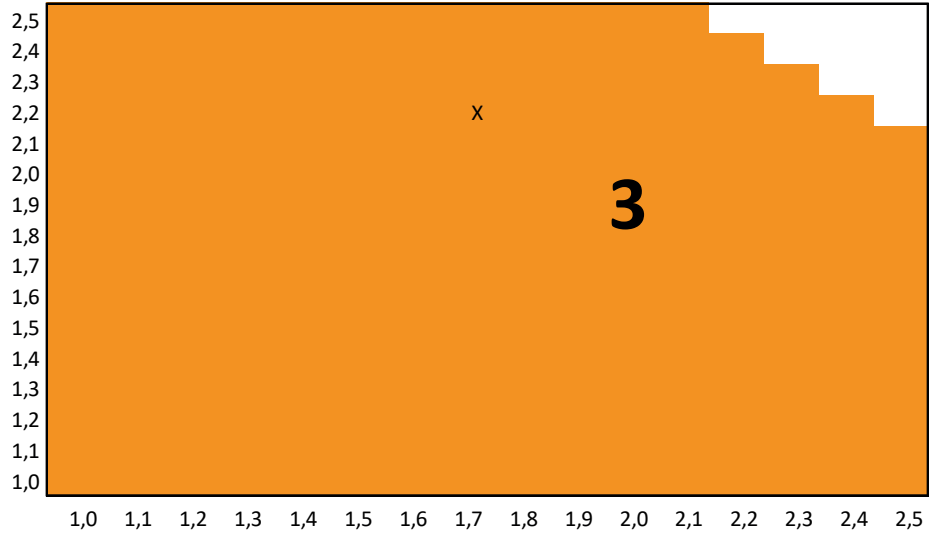


THERMIA® CF26

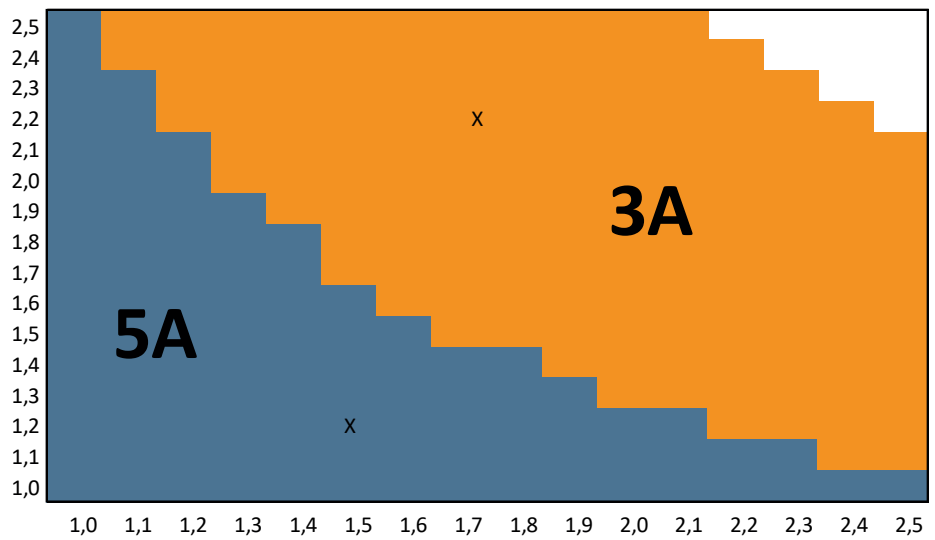
Ventanas extraordinariamente versátiles.

Ventanas para vivir mejor

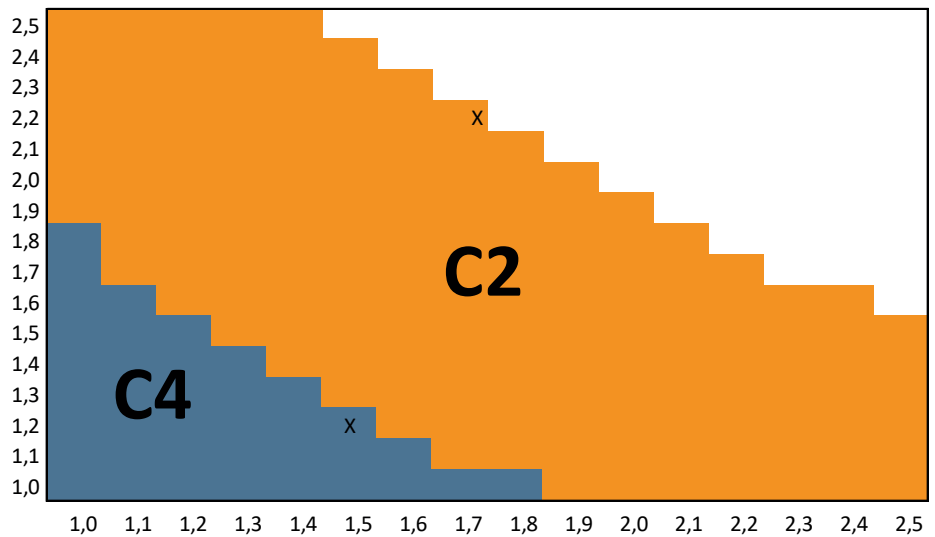
PERMEABILIDAD AL AIRE según EN 12207 - Marcado CE según EN 14351-1:2006 (E.1)



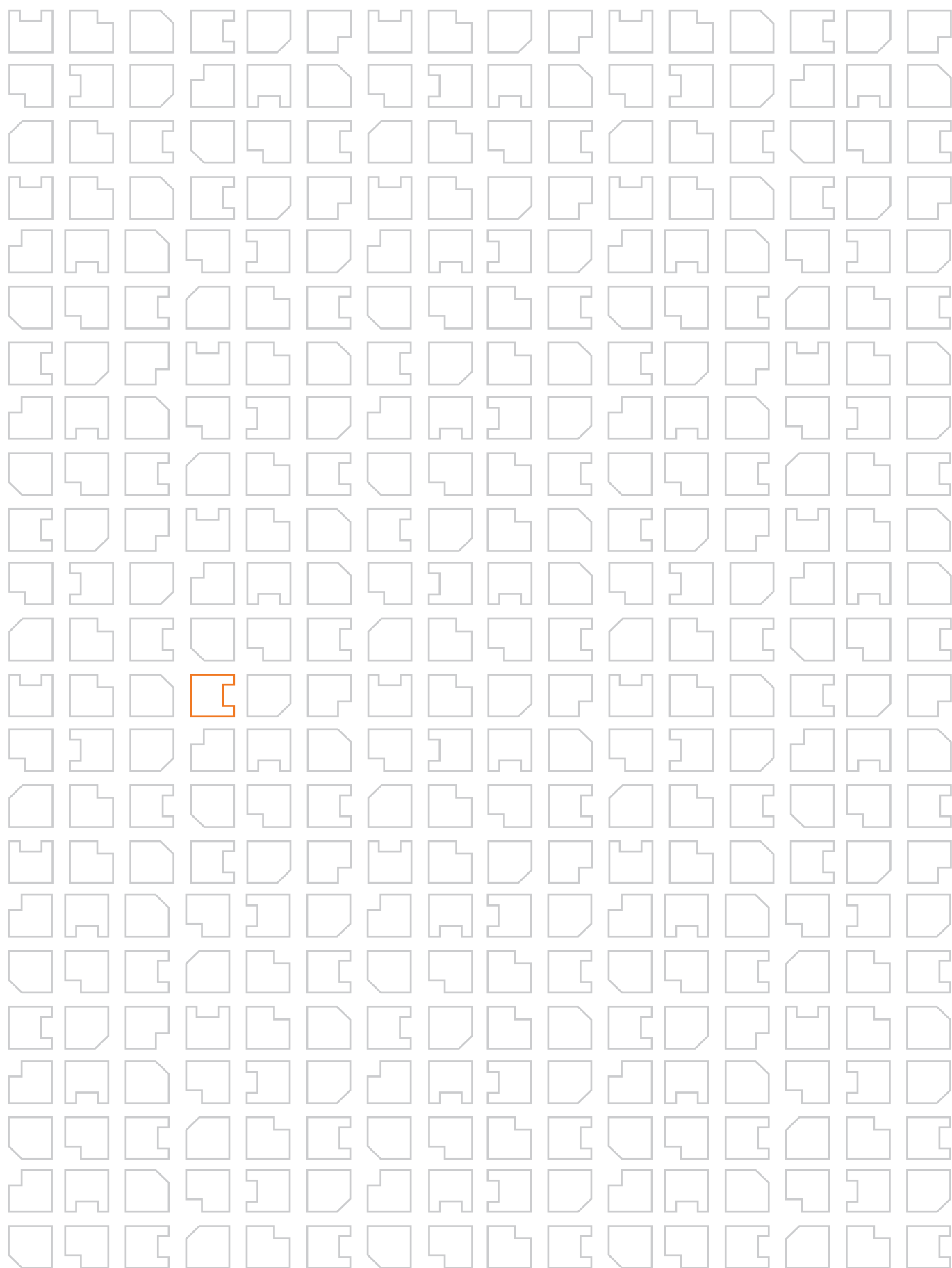
ESTANQUIDAD AL AGUA según EN 12208 - Marcado CE según EN 14351-1:2006 (E.1)

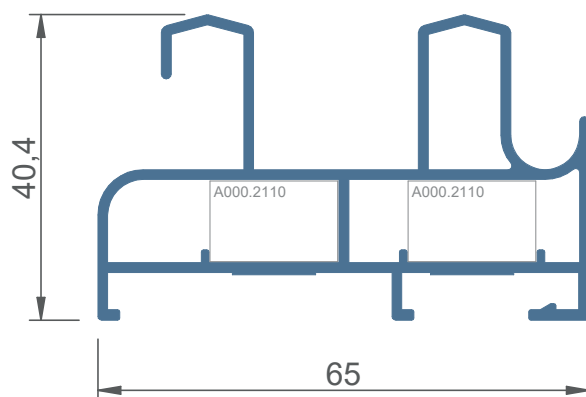


RESISTENCIA AL VIENTO según EN 12210 - Marcado CE según EN 14351-1:2006 (E.1)

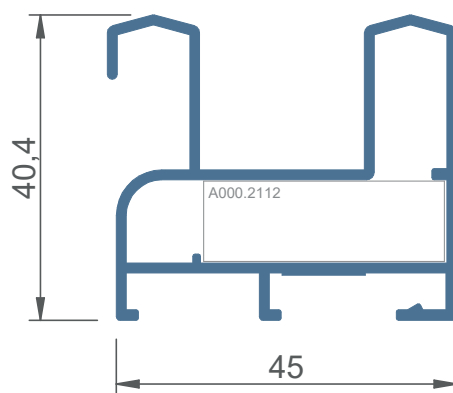


Resultados obtenidos de los informes según ensayos internos, y en base al Anexo E de la norma EN 14351-1:2006.

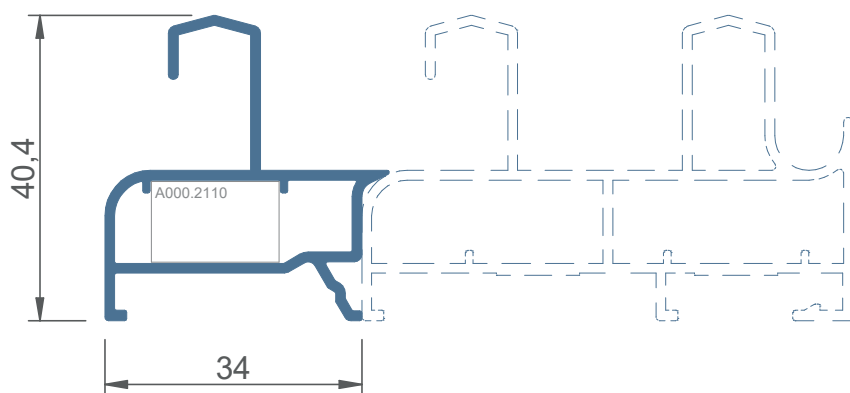




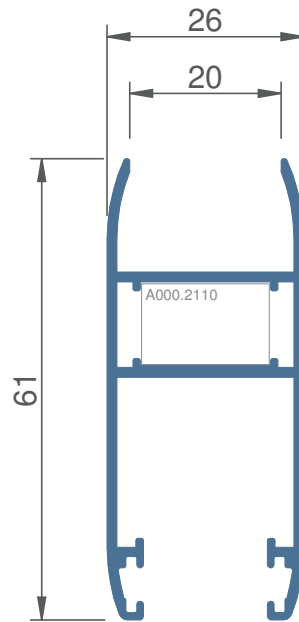
CF26 4111



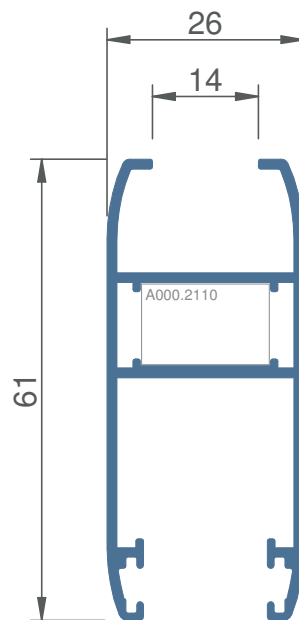
CF26 4120



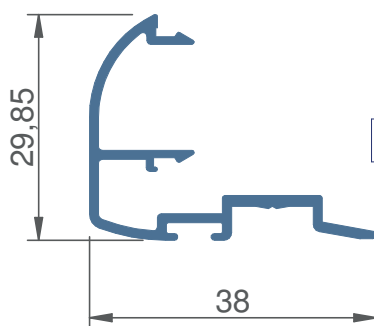
CF26 4130



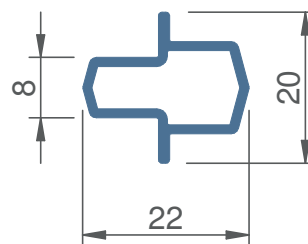
CF26 4210



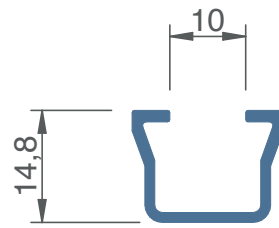
CF26 4212



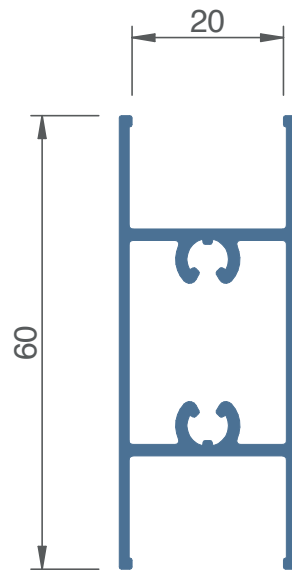
CF26 4200



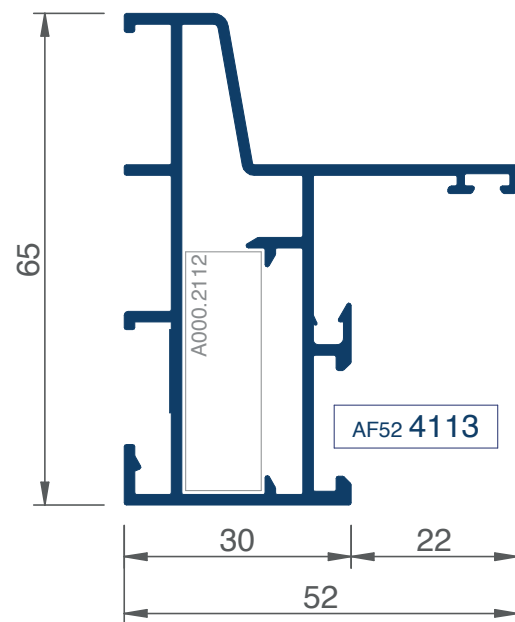
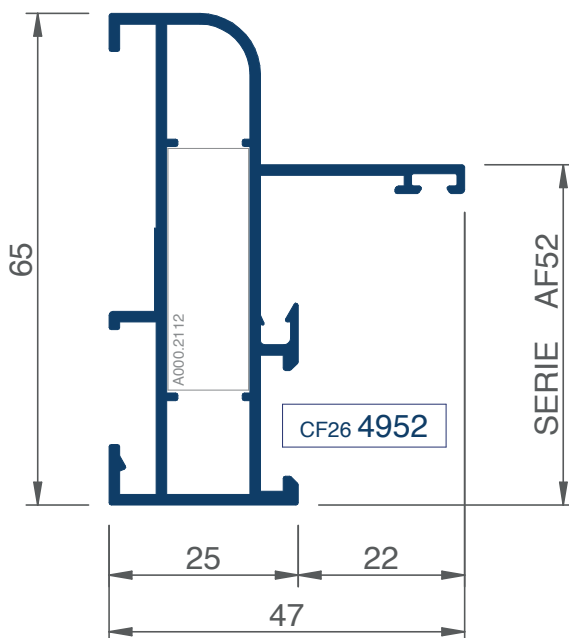
CF22 4250



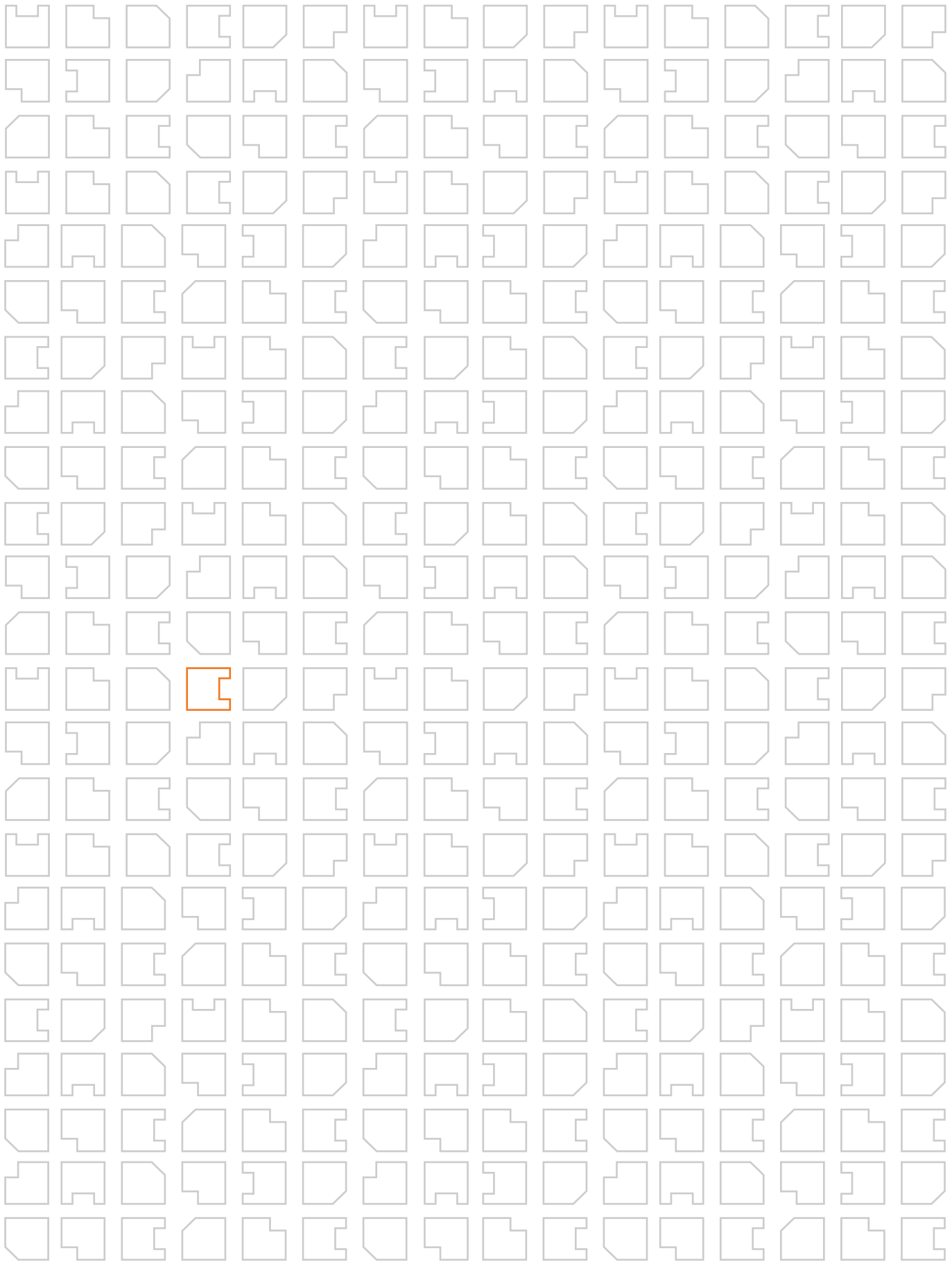
A000 4560



A000 4540

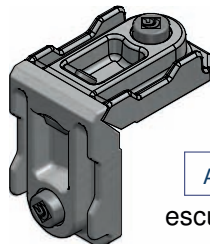


SERIE AF52

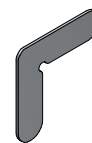




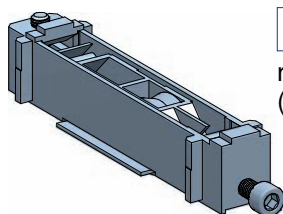
A000 2110
escuadra 17,2x11



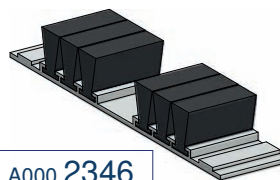
A000 2112
escuadra 32,6x11



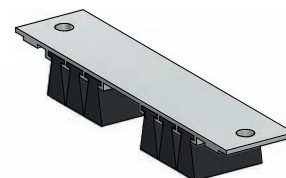
000 2144
escuadra alineación
alas hojas



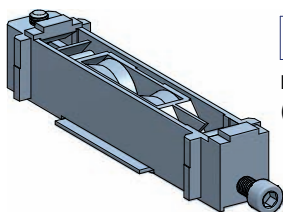
CF26 3762
rueda simple regulable
(bolas) 40 kg/hoja



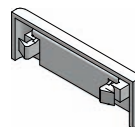
A000 2346
cortavientos inferior
adhesivo



A000 2347
cortavientos superior
desmontable



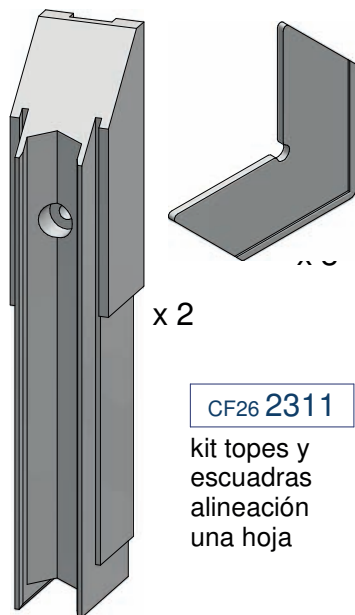
CF26 3764
rueda tándem regulable
(agujas) 160 kg/hoja



A000 2300
tapón deflector
con lámina

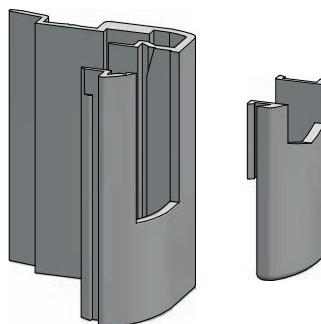


A000 2375
cepillo estanquidad
7x5 con lámina central

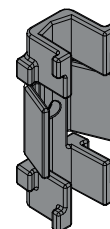


x 2

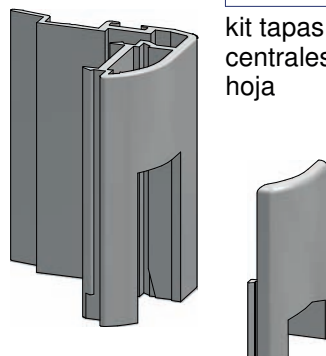
CF26 2311
kit topes y
escuadras
alineación
una hoja



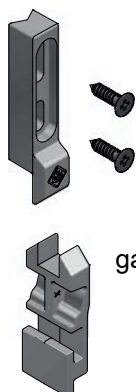
CF26 2310
kit tapas
centrales una
hoja



CF26 2351
base perfil
CF22.4250



CF26 2350
tapa terminal
perfil CF22.4250



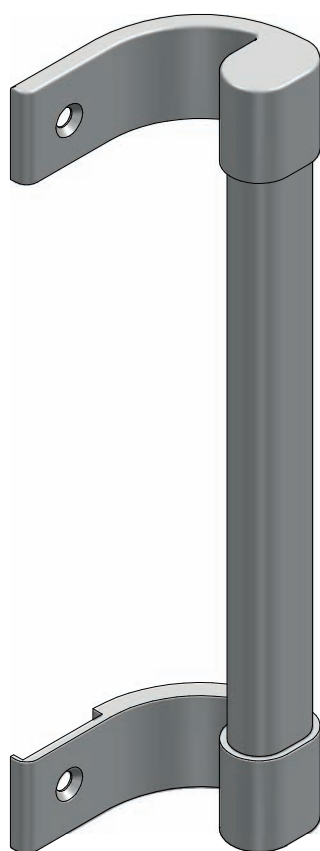
A000 3710
gancho y cerradero



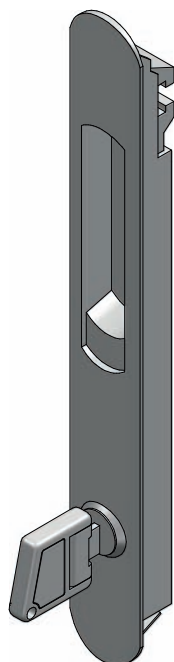
A000 3732
cierre corto



A000 3734
cierre base



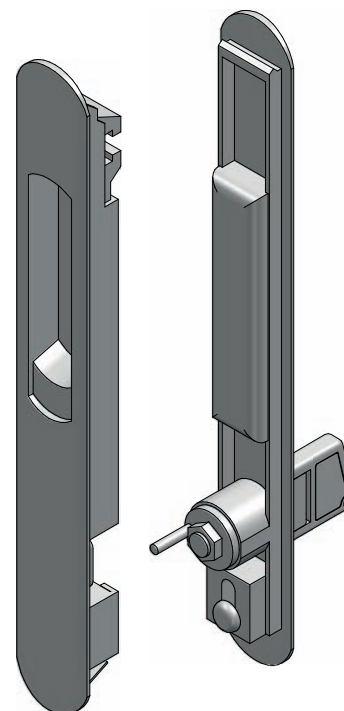
A000 3731
tirador universal



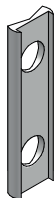
A000 3735
cierre con llave



A000 3738
uñero ext

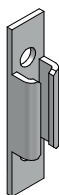


A000 3736
cierre con llave ext



A000 3741

apoyo pieza 3742



A000 3742

cerradero multipunto



A000 3743

calce apoyo mecanismo



A000 3740

manilla cremona

ENTRADA 7,5mm

A000 3746 (long 600)

A000 3747 (long 1000)

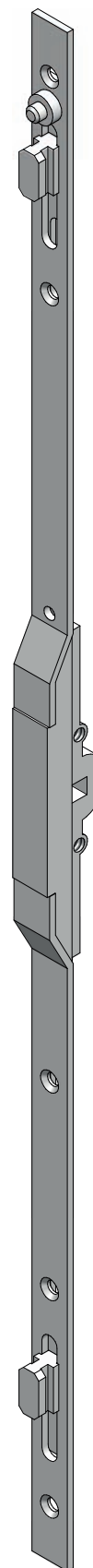
A000 3748 (long 1800)

ENTRADA 15mm

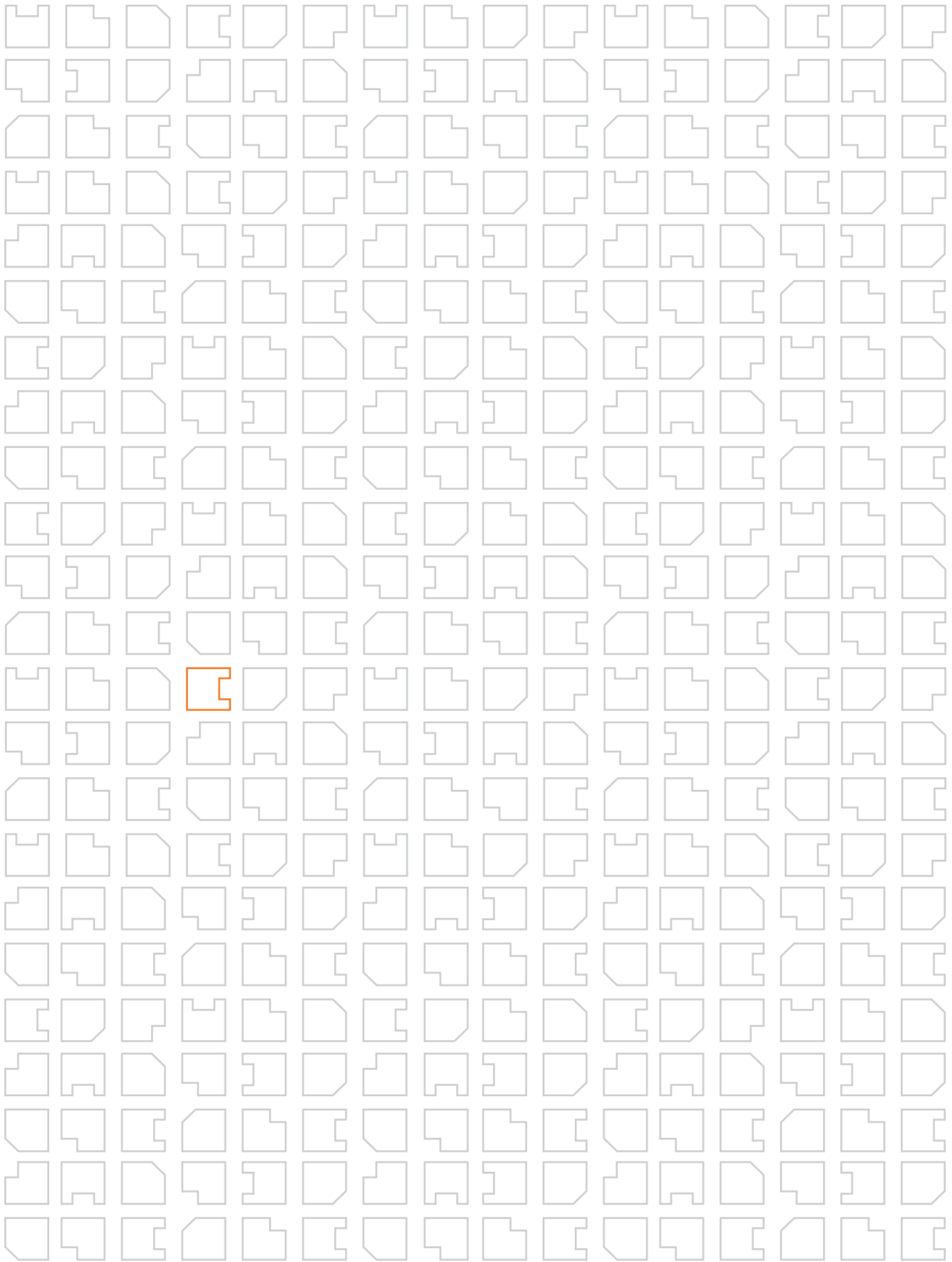
A000 37464 (long 600)

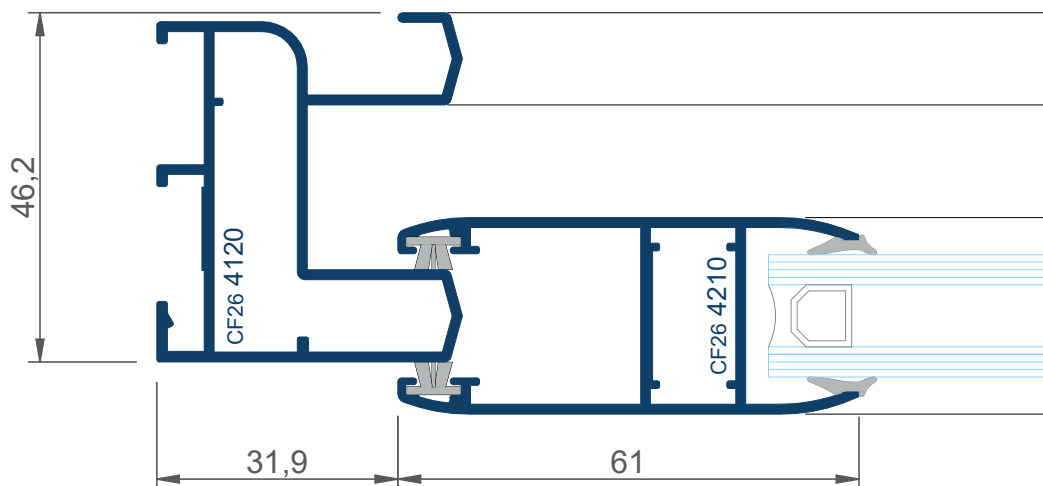
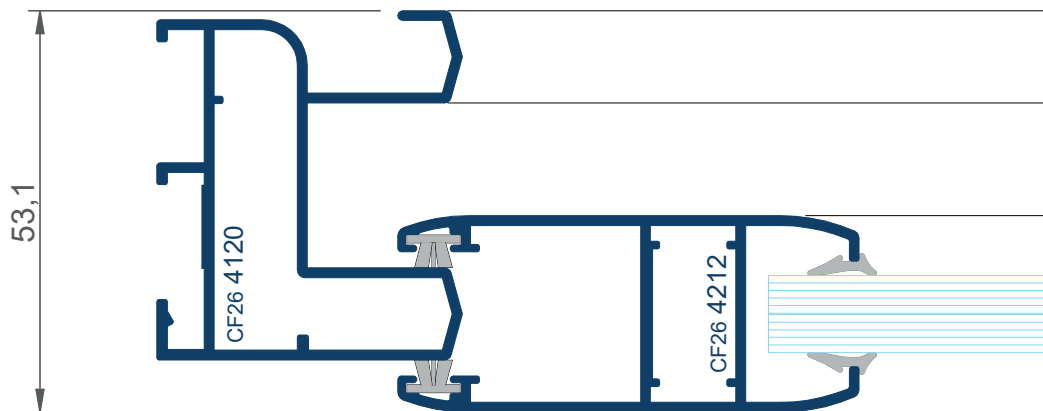
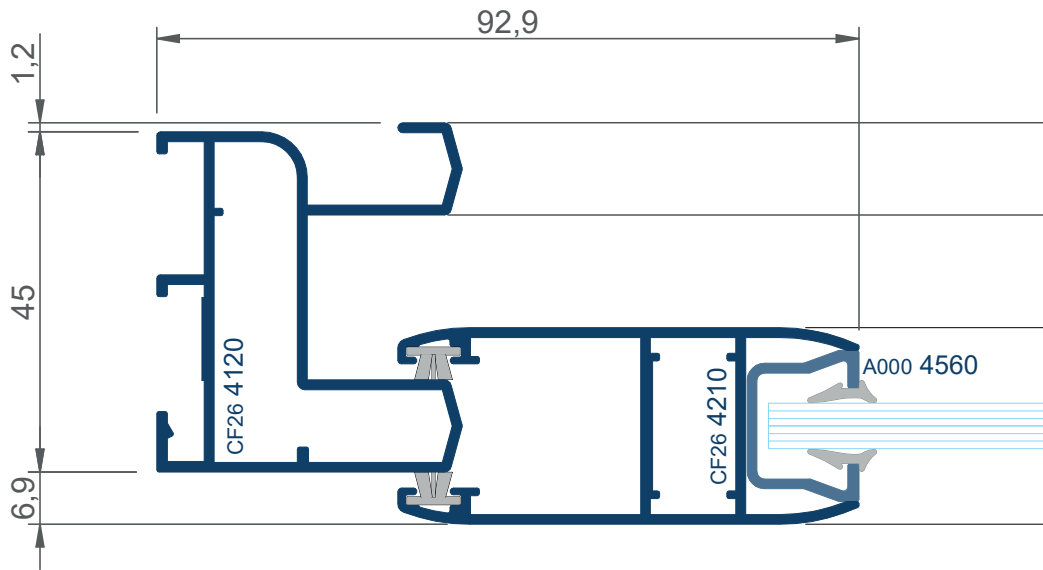
A000 37474 (long 1000)

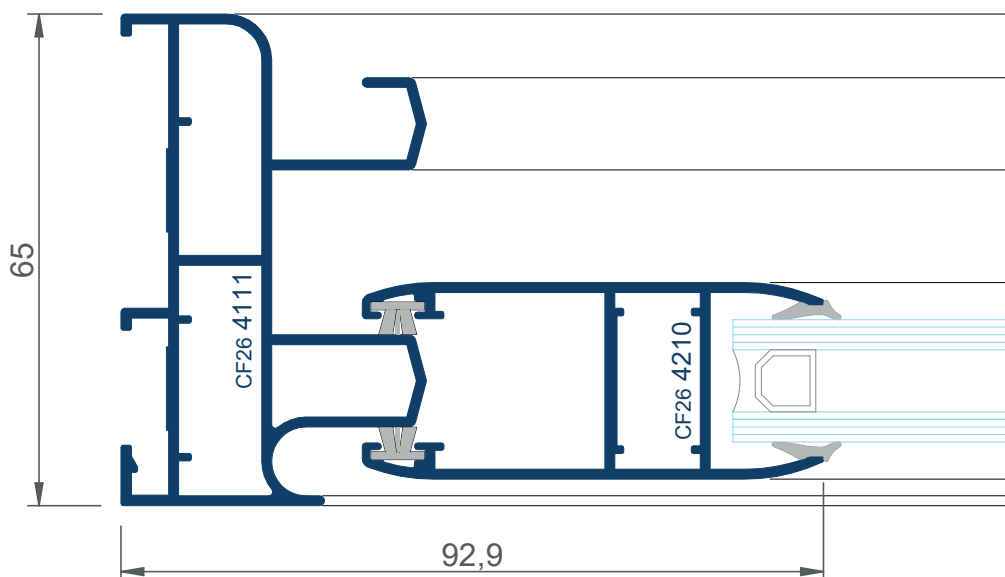
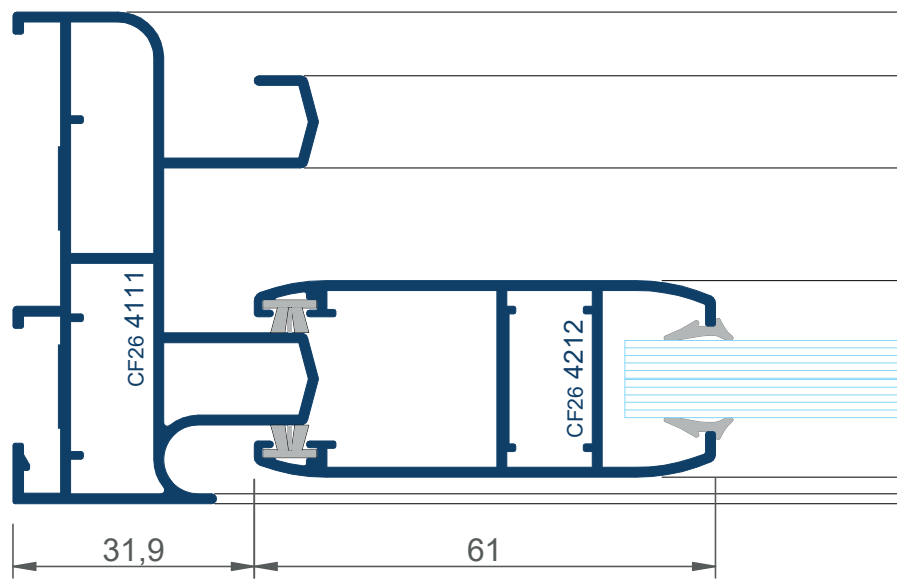
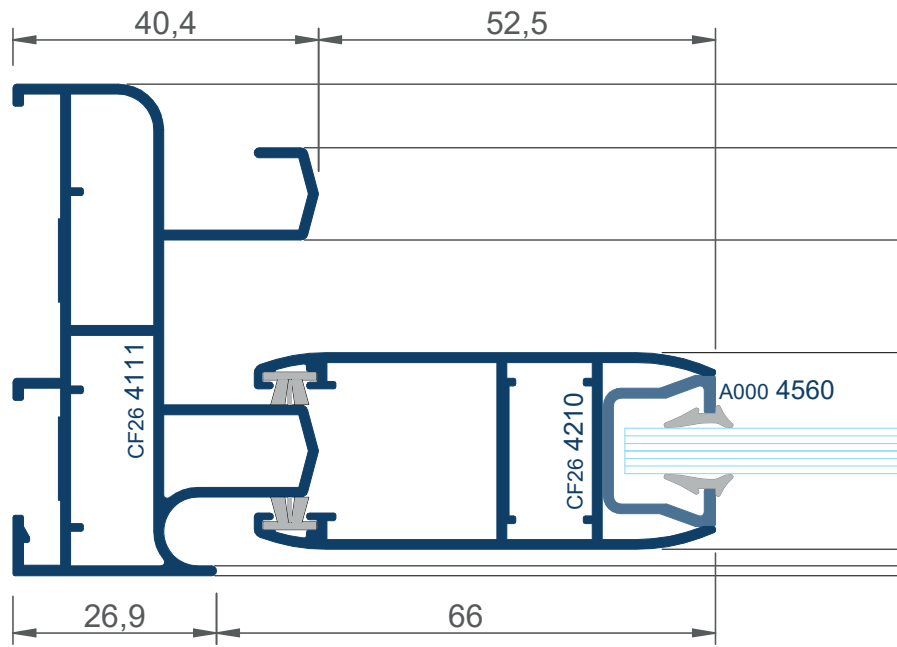
A000 37484 (long 1800)

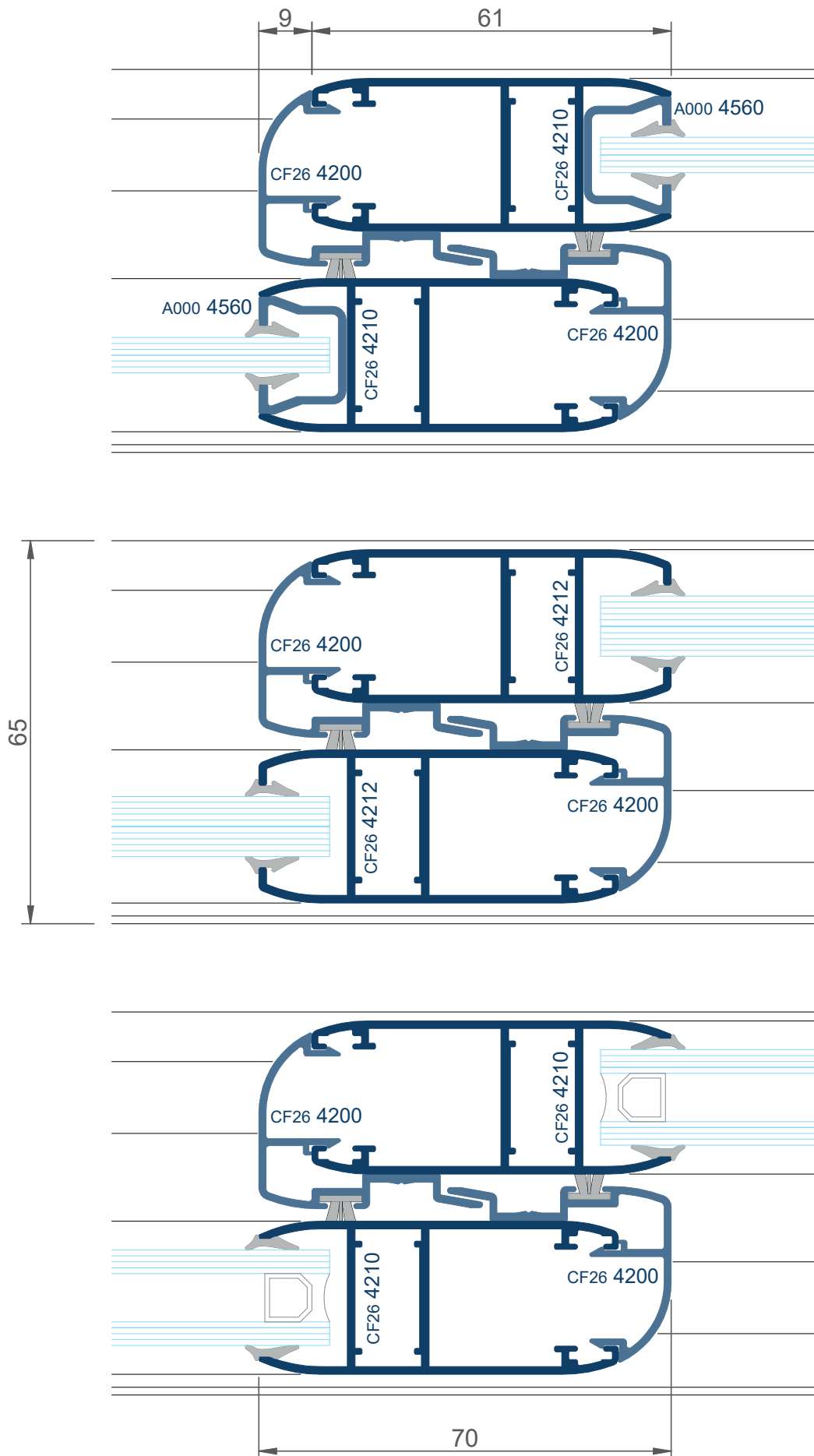


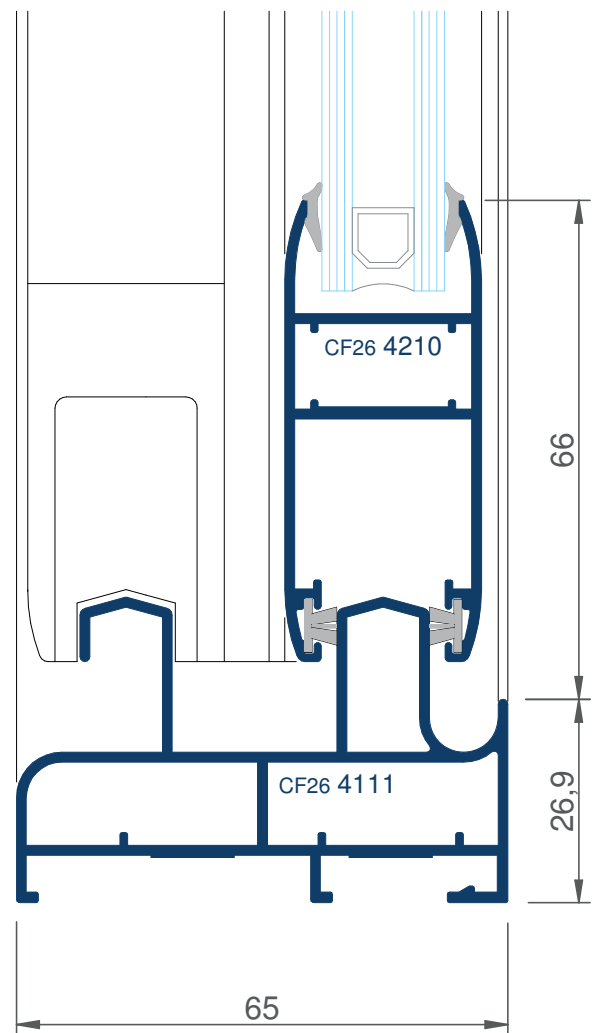
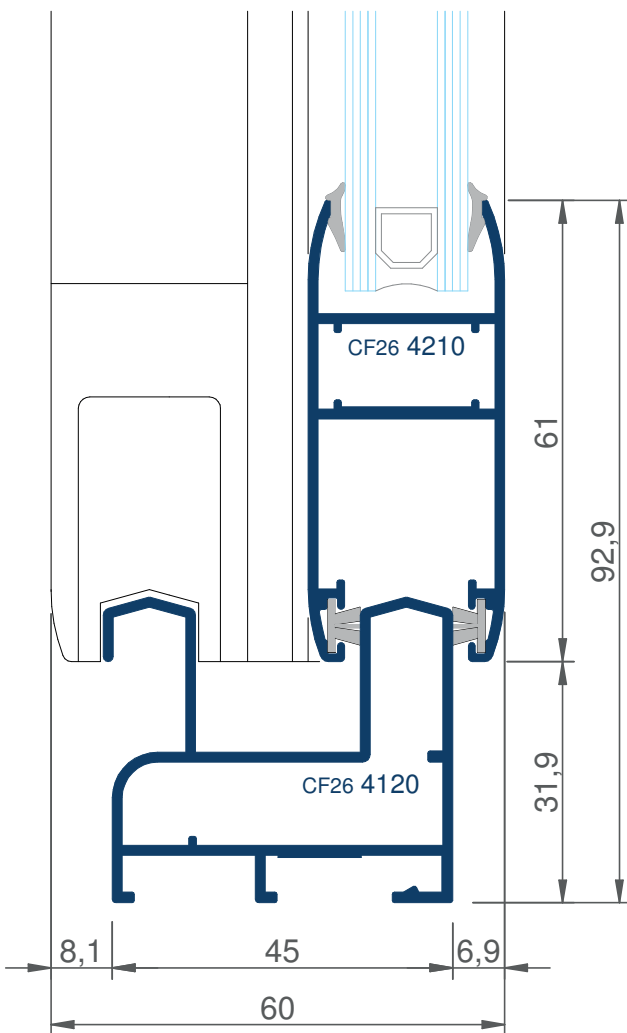
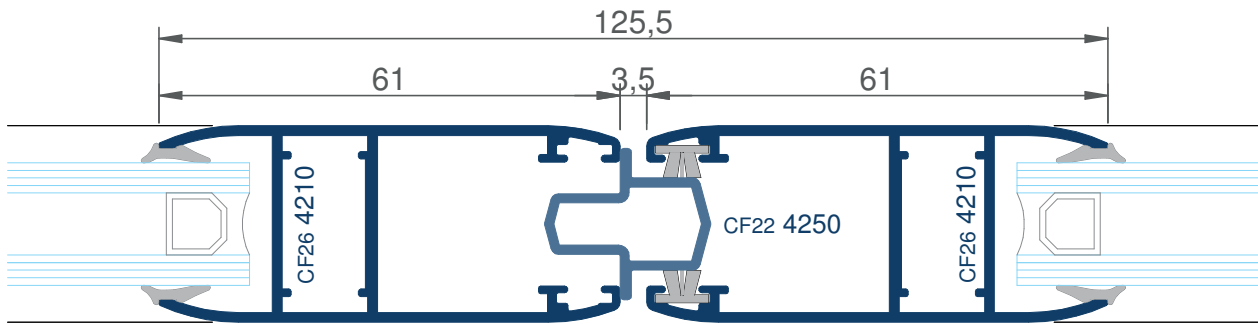
alt minima corred	1000	1400	2200
herraje entrada 7,5	A000 3746	A000 3747	A000 3748
herraje entrada 15	A000 37464	A000 37474	A000 37484
puntos de cierre	2	2	3
cerradero	A000 3742 (2uds)	A000 3742 (2uds)	A000 3742 (3uds)
calce cerradero	A000 3741 (2uds)	A000 3741 (2uds)	A000 3741 (3uds)
cremona	A000 3740 (1 ud)	A000 3740 (1 ud)	A000 3740 (1 ud)

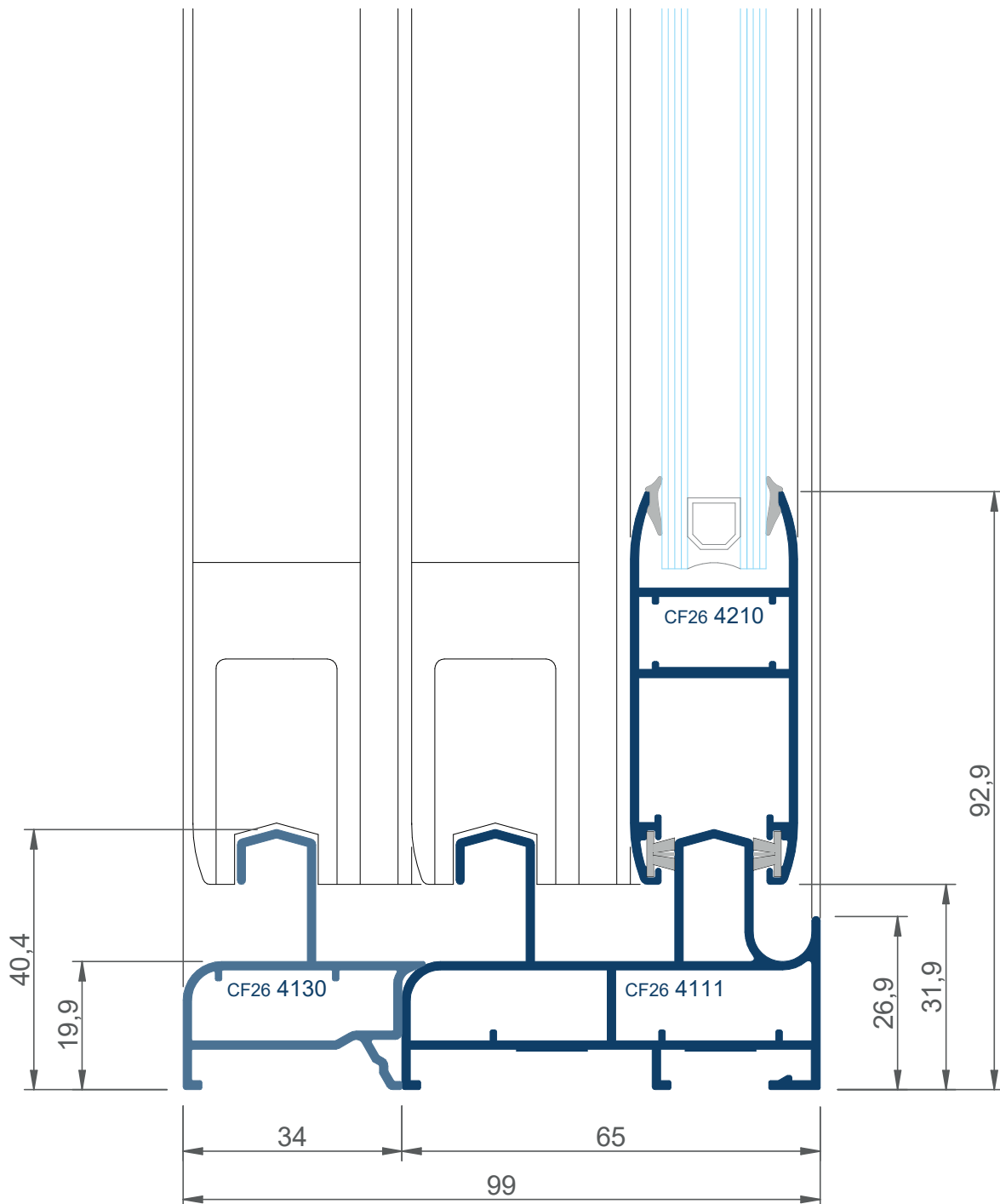


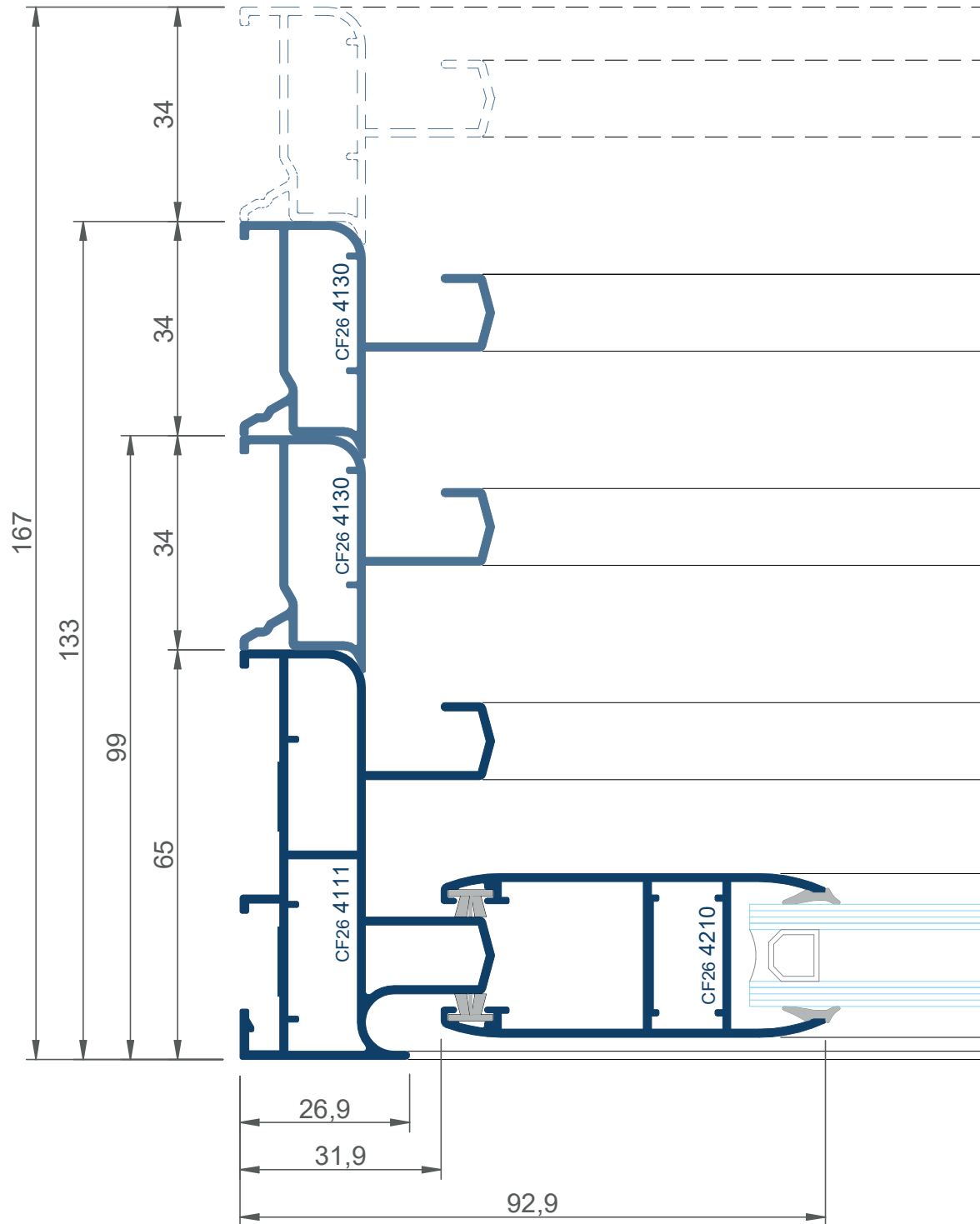


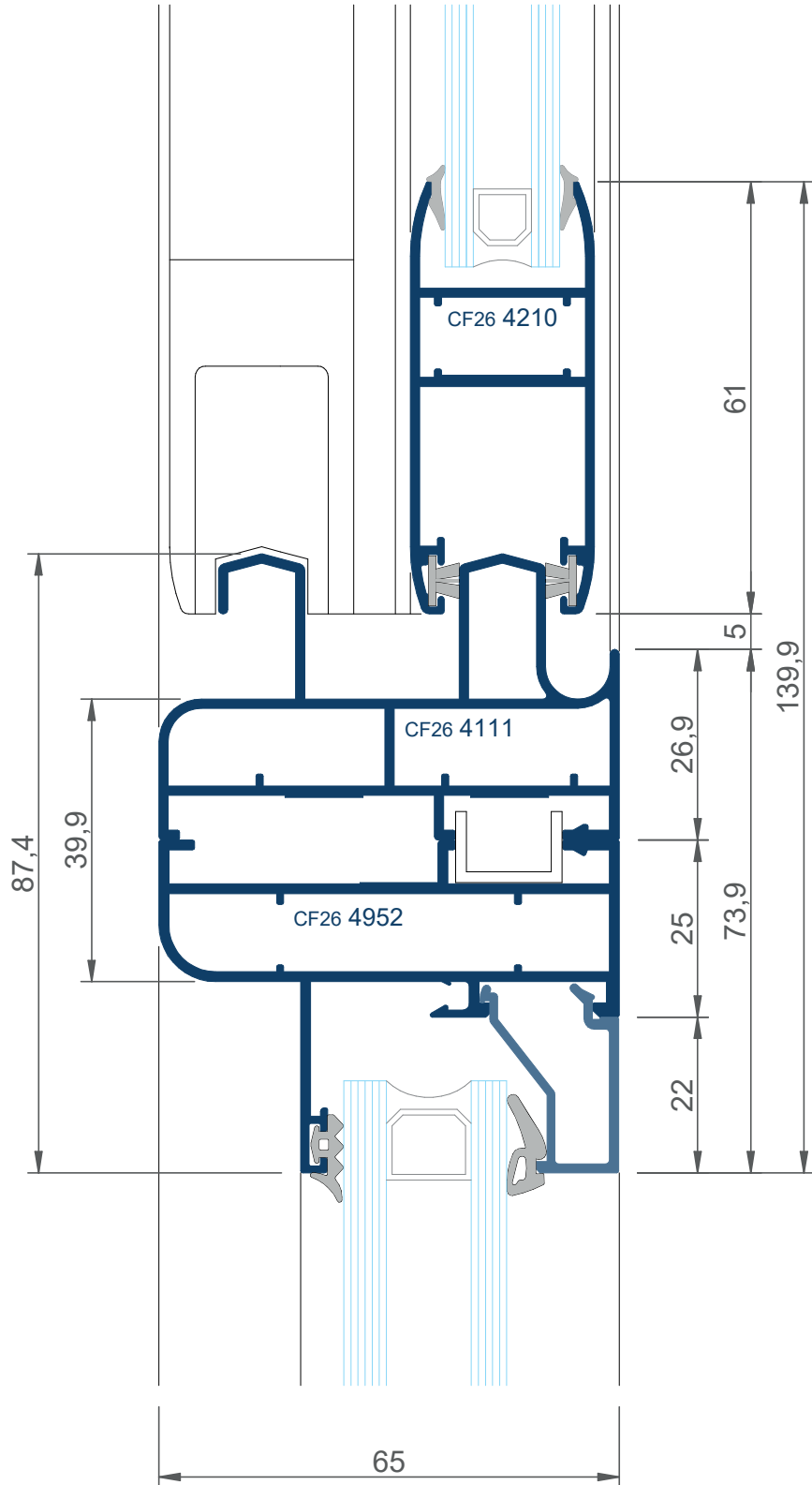


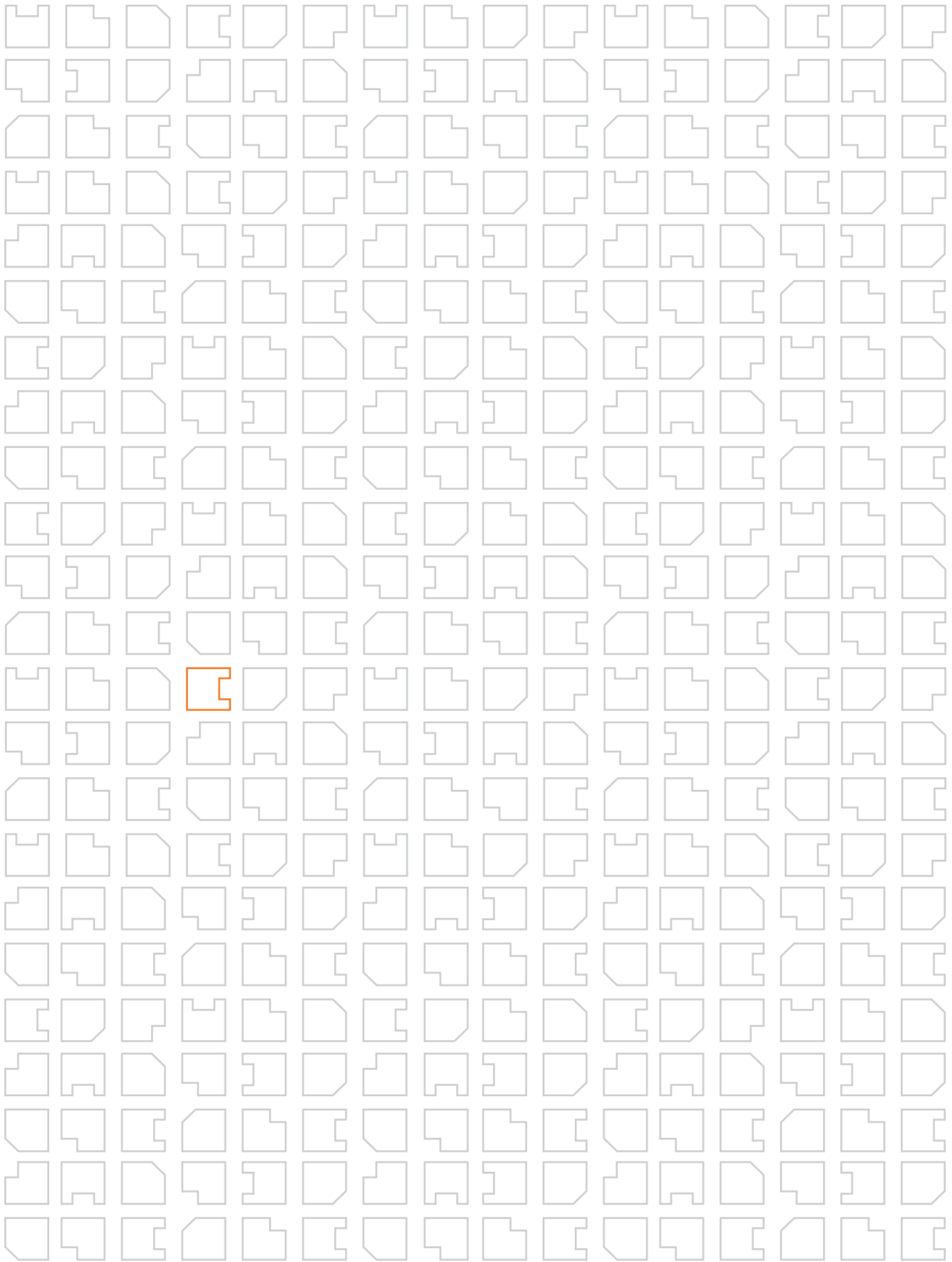


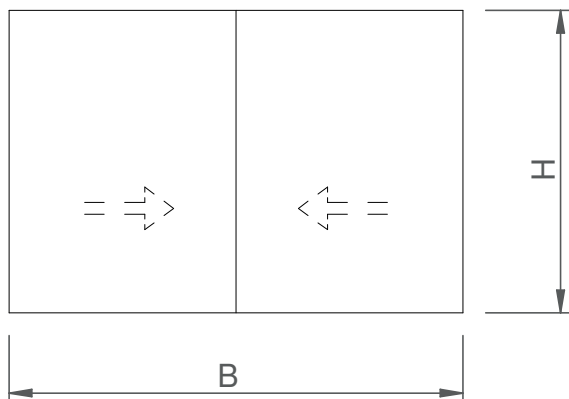






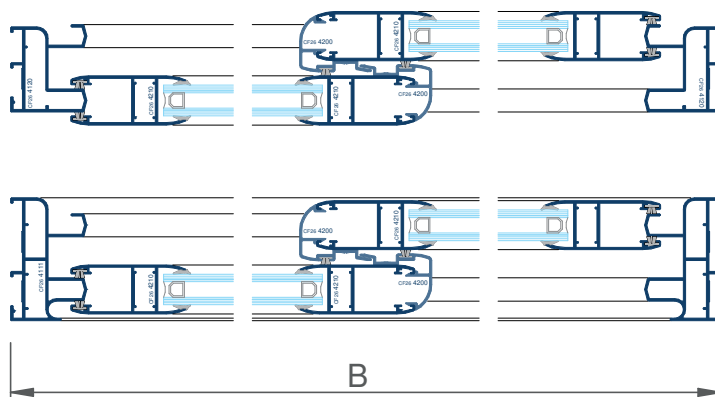
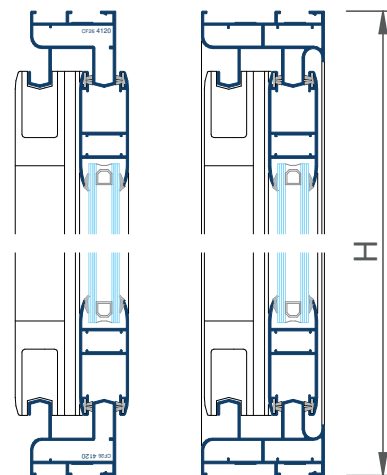


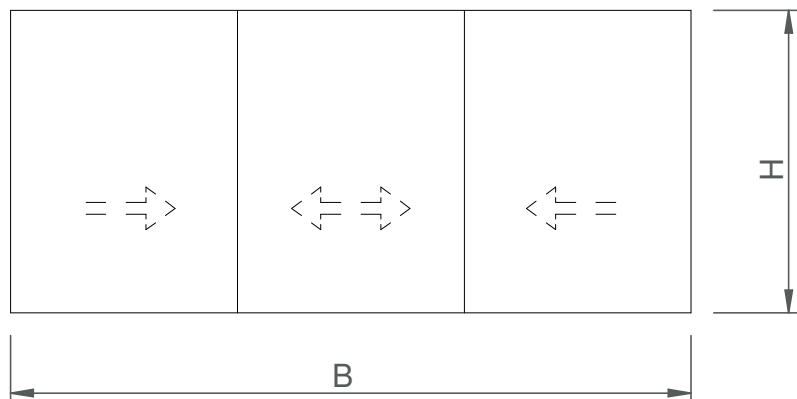




FORMULAS DE CORTE				
		UDS	FORMULA	FORMA
marco horizontal	CF26.4111/20	2	B	\ --- /
marco vertical	CF26.4111/20	2	H	\ --- /
hoja horizontal	CF26.4210	4	(B-12)/2	\ --- /
hoja vertical	CF26.4210	4	H-64	\ --- /
perfil de cruce central	CF26.4200	2	H-164	---
vidrio	2	(B-208)/2 x H-162		

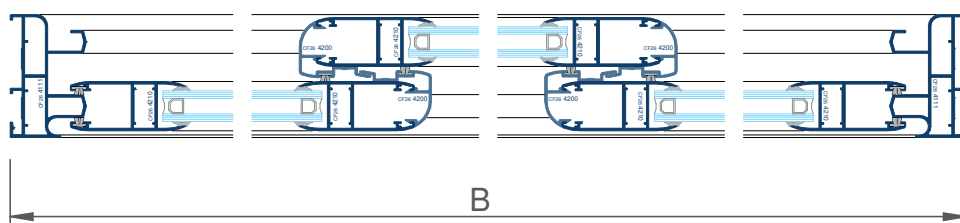
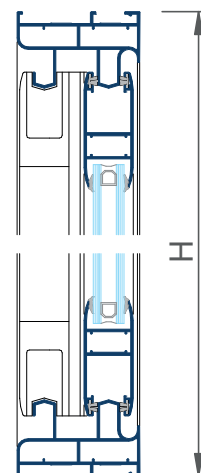
ACCESORIOS		
		UDS
escuadra marco	A000.2110	8
escuadra hoja	A000.2110	8
deflector con lamina	A000.2300	2
cortavientos superior	A000.2347	1
cortavientos inferior	A000.2346	1
juego piezas interior hoja	CF26.2311	2
juego tapas centrales hoja	CF26.2310	2
ruedas (según peso)	CF26.376X	4
cierre (según modelo)	<i>ver D02 a D03</i>	2
cepillo de cierre	A000.2374	6H+4B

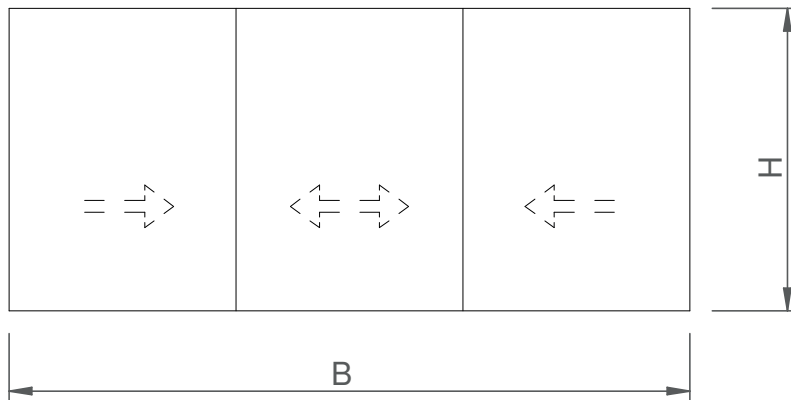




FORMULAS DE CORTE				
		UDS	FORMULA	FORMA
marco horizontal	CF26.4111	2	B	\ --- /
marco vertical	CF26.4111	2	H	\ --- /
hoja horizontal	CF26.4210	6	$(B+40)/3$	\ --- /
hoja vertical	CF26.4210	6	H-64	\ --- /
perfil de cruce central	CF26.4200	4	H-164	---
	vidrio	3	$(B-254)/3 \times H-162$	

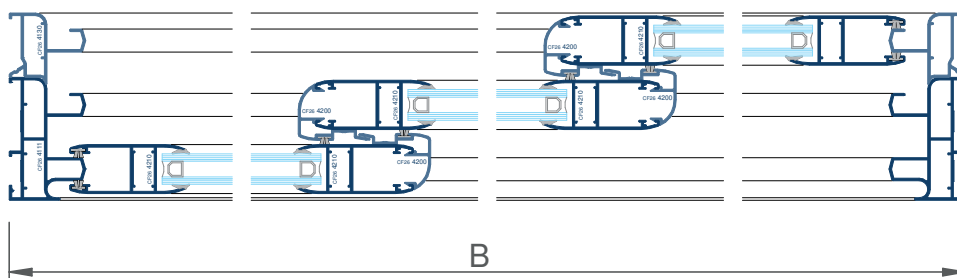
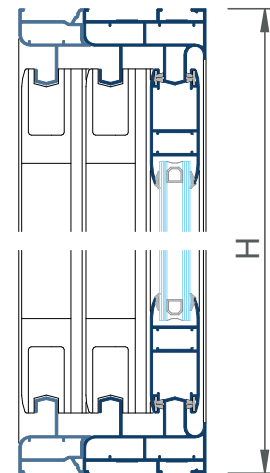
ACCESORIOS		
		UDS
escuadra marco	A000.2110	8
escuadra hoja	A000.2110	12
deflector con lamina	A000.2300	4
cortavientos superior	A000.2347	2
cortavientos inferior	A000.2346	2
juego piezas interior hoja	CF26.2311	2
juego tapas centrales hoja	CF26.2310	4
ruedas (según peso)	CF26.376X	6
cierre (según modelo)	ver D02 a D03	2
cepillo de cierre	A000.2374	8H+4B

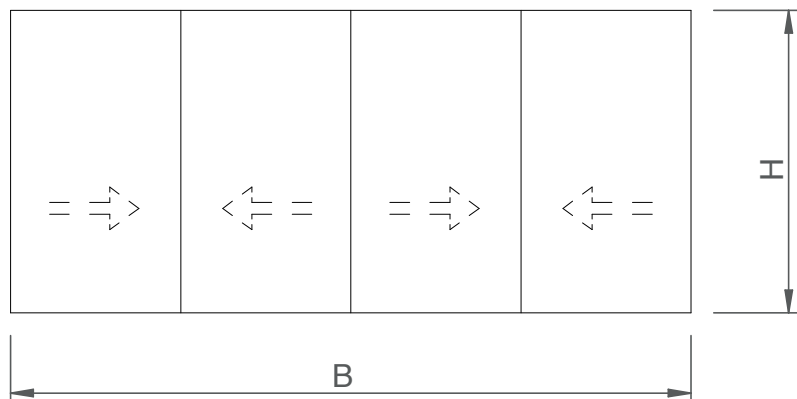




FORMULAS DE CORTE				
		UDS	FORMULA	FORMA
marco horizontal	CF26.4111	2	B	\ --- /
marco vertical	CF26.4111	2	H	\ --- /
marco rail adicional hor	CF26.4130	2	B	\ --- /
marco rail adicional vert	CF26.4130	2	H	\ --- /
hoja horizontal	CF26.4210	6	$(B+40)/3$	\ --- /
hoja vertical	CF26.4210	6	H-64	\ --- /
perfil de cruce central	CF26.4200	4	H-164	---
vidrio	3		$(B-254)/3 \times H-162$	

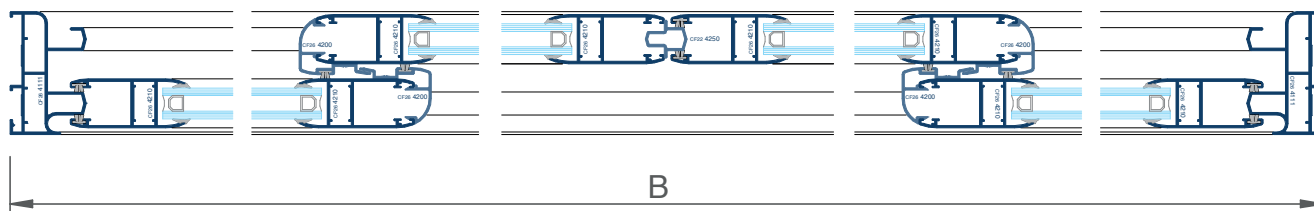
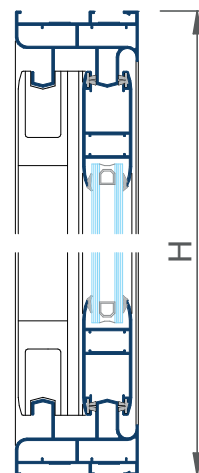
ACCESORIOS			UDS
escuadra marco	A000.2110		12
escuadra hoja	A000.2110		12
deflector con lamina	A000.2300		4
cortavientos superior	A000.2347		2
cortavientos inferior	A000.2346		2
juego piezas interior hoja	CF26.2311		2
juego tapas centrales hoja	CF26.2310		4
ruedas (según peso)	CF26.376X		6
cierre (según modelo)	<i>ver D02 a D03</i>		2
cepillo de cierre	A000.2374		8H+4B

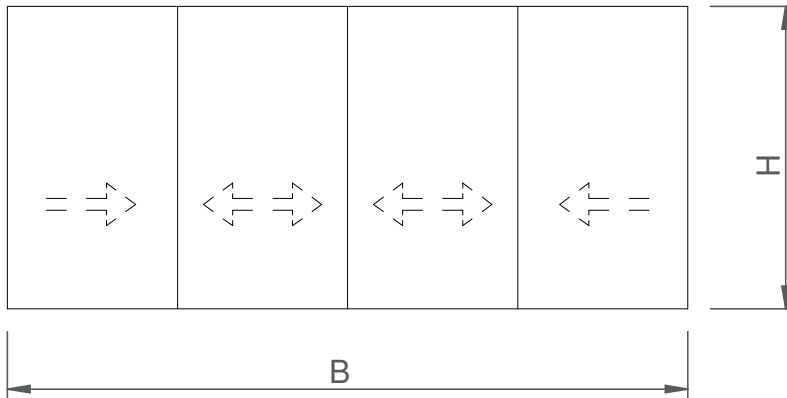




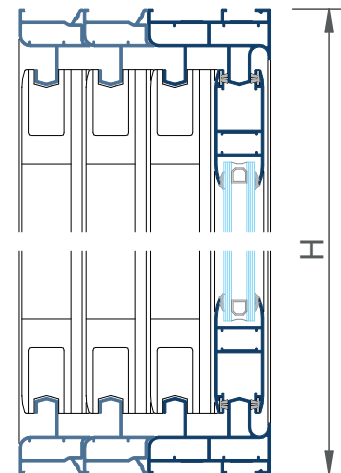
FORMULAS DE CORTE				
		UDS	FORMULA	FORMA
marco horizontal	CF26.4111	2	B	\---/
marco vertical	CF26.4111	2	H	\---/
hoja horizontal	CF26.4210	8	$(B+36)/4$	\---/
hoja vertical	CF26.4210	8	H-64	\---/
perfil encuentro hoja	CF22.4250	1	H-144	---
perfil de cruce central	CF26.4200	4	H-164	---
vidrio	4		$(B-355)/4 \times H-162$	

ACCESORIOS		
		UDS
escuadra marco	A000.2110	8
escuadra hoja	A000.2110	16
deflector con lamina	A000.2300	4
cortavientos superior	A000.2347	2
cortavientos inferior	A000.2346	2
juego piezas interior hoja	CF26.2311	4
juego tapas centrales hoja	CF26.2310	4
tapa terminal perfil CF224250	CF26.2350	2
base perfil CF224250	CF26.2351	4
ruedas (según peso)	CF26.376X	8
cierre (según modelo)	ver D02 a D03	3
cepillo de cierre	A000.2374	10H+4B

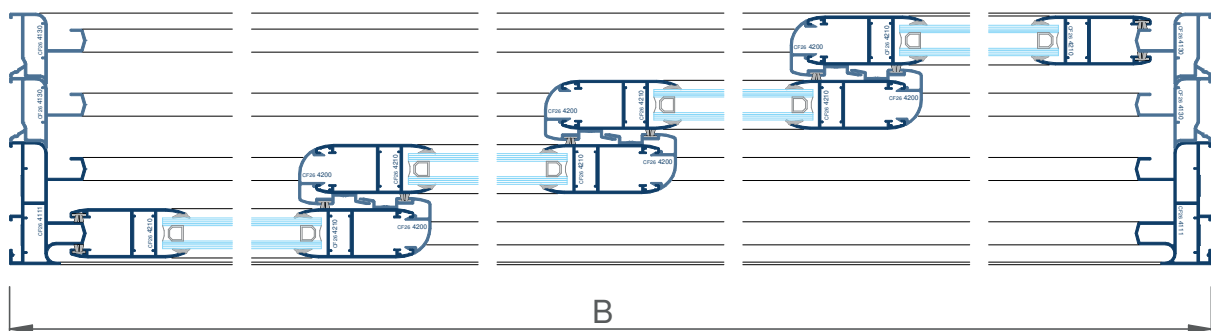


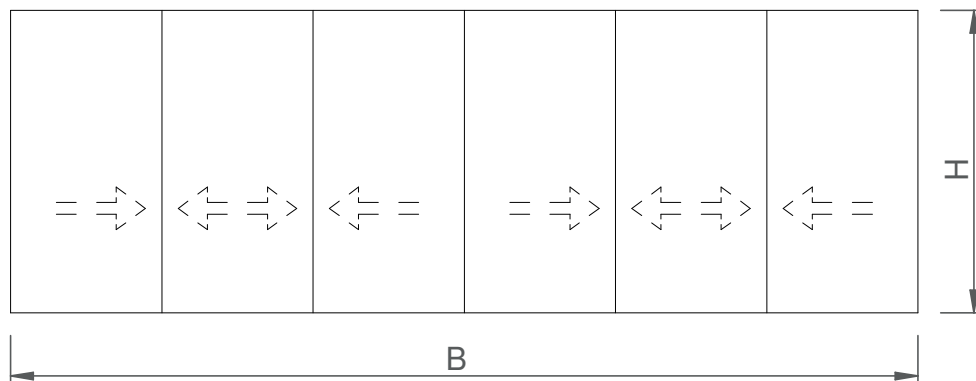


FORMULAS DE CORTE				
		UDS	FORMULA	FORMA
marco horizontal	CF26.4111	2	B	\ --- /
marco vertical	CF26.4111	2	H	\ --- /
marco rail adicional hor	CF26.4130	4	B	\ --- /
marco rail adicional vert	CF26.4130	4	H	\ --- /
hoja horizontal	CF26.4210	8	(B+94)/4	\ --- /
hoja vertical	CF26.4210	8	H-64	\ --- /
perfil de cruce central	CF26.4200	6	H-164	---
vidrio	4		(B-298)/4 x H-162	



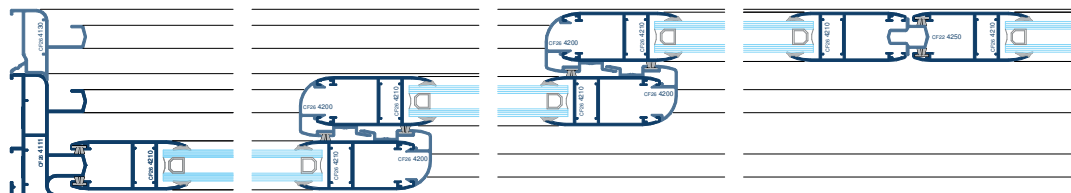
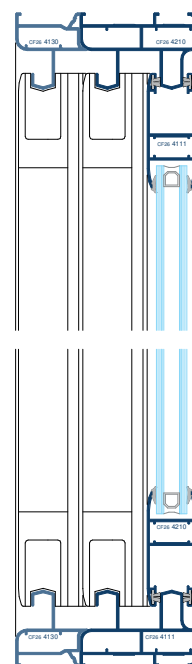
ACCESORIOS			UDS
escuadra marco	A000.2110		16
escuadra hoja	A000.2110		16
deflector con lamina	A000.2300		8
cortavientos superior	A000.2347		3
cortavientos inferior	A000.2346		3
juego piezas interior hoja	CF26.2311		2
juego tapas centrales hoja	CF26.2310		6
ruedas (según peso)	CF26.376X		8
cierre (según modelo)	ver D02 a D03		2
cepillo de cierre	A000.2374		10H+4B

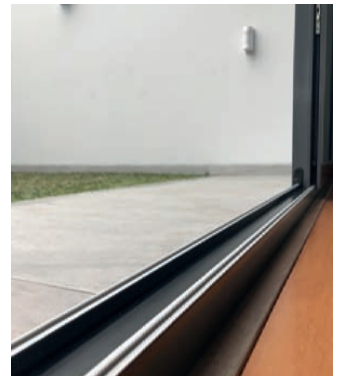
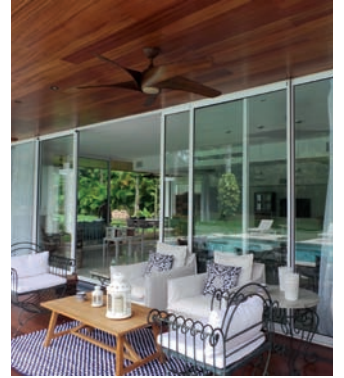
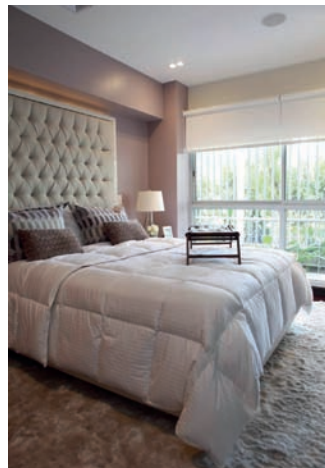
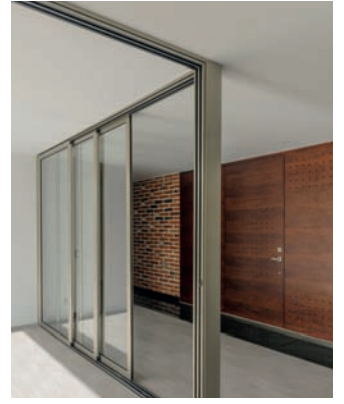
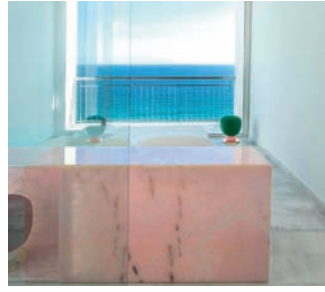
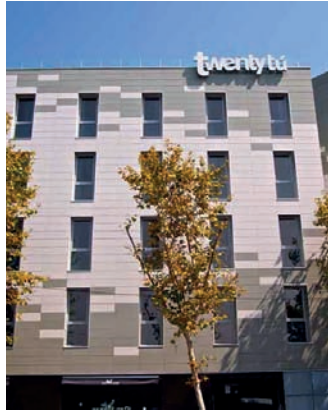




FORMULAS DE CORTE				
		UDS	FORMULA	FORMA
marco horizontal	CF26.4111	2	B	\---/
marco vertical	CF26.4111	2	H	\---/
marco adicional vertical	CF26.4130	2	H	\---/
marco adicional horizontal	CF26.4130	2	B	\---/
hoja horizontal	CF26.4210	12	$(B+140)/6$	\---/
hoja vertical	CF26.4210	12	H-64	\---/
perfil encuentro hoja	CF22.4250	1	H-144	---
perfil de cruce central	CF26.4200	8	H-164	---
vidrio		6	$(B-447)/6 \times H-162$	

ACCESORIOS			UDS
escuadra marco	A000.2110		12
escuadra hoja	A000.2110		24
deflector con lamina	A000.2300		6
cortavientos superior	A000.2347		4
cortavientos inferior	A000.2346		4
juego piezas interior hoja	CF26.2311		6
juego tapas centrales hoja	CF26.2310		8
tapa terminal perfil CF224250	CF26.2350		2
base perfil CF224250	CF26.2351		4
ruedas (según peso)	CF26.376X		12
cierre (según modelo)	ver D02 a D03		3
cepillo de cierre	A000.2374		14H+4B





Obras de Thermia Barcelona

THERMIA[®]

B A R C E L O N A

Ventanas para vivir mejor

Sede Central en Barcelona

C/ Narcís Monturiol, 34
08192 Sant Quirze del Vallès
Barcelona (España)
Tel. +34 937 121 237
contacto@thermiabarcelona.com
Síguenos en   

Delegación Área Andina

Los Telares, 289
Urbanización Industrial Vulcano
Ate, Lima (Perú)
Tel. +51-1-7197649

Showrooms

Barcelona

Narcís Monturiol, 34
08192 Sant Quirze Valles
Tel. +34 937 121 237

Lima

Paseo de la República, 3583
2o. Piso - San Isidro
Tel. +51-1-7197649

Girona

Carrer Sant Jordi, 2
Local 4 - Sarrià de Ter
Tel. +34 937 121 237

THERMIABARCELONA.COM